

FOR LEASE  
**425 RUE GUY  
#201**

5,700 SQUARE FEET



Contact  
Information

360 NOTRE-DAME O.  
SUITE 500  
MONTREAL, QUEBEC

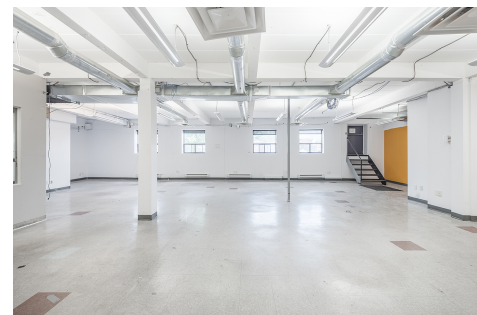
✉ leasing@metrocap.ca

☎ (514) 845-3112

**Overview -**

**LOCATED IN THE VIBRANT GRIFFINTOWN  
A FEW STEPS AWAY FROM THE LACHINE CANAL**

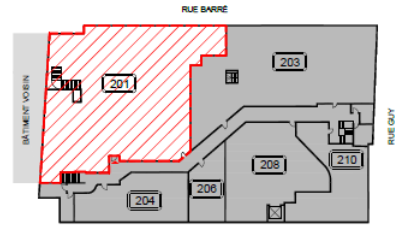
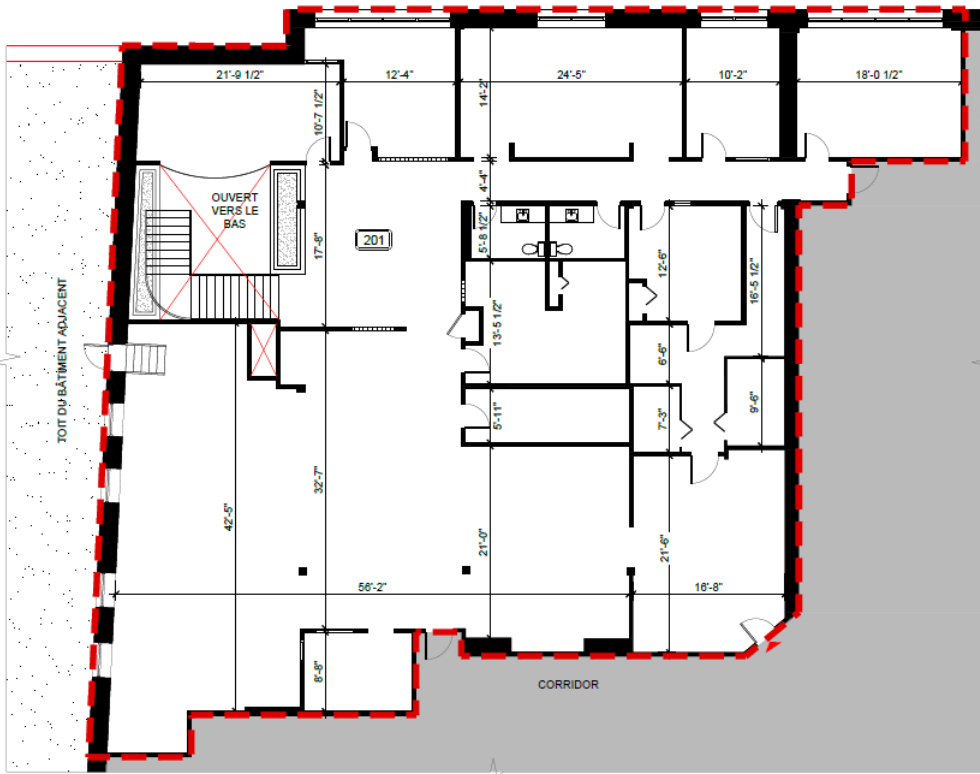
**CO-TENANCY: PETRO CANADA, A&W, RBC, LIME  
GRIFFINTOWN, SHAY, RESTAURANT GRINDER,  
BIRD BAR, PERLES ET Paddock, BIRD BAR,  
MAMAN, PETROS GRIFFINTOWN, LULU'S PASTA  
BAR, FOXY**



FOR LEASE  
**425 RUE GUY**  
**#201**

5,700 SQUARE FEET

SUITE 201



PLAN CLÉ  
PAS À L'ÉCHELLE

PLAN DE LA SUITE 201

SCALE / ÉCHELLE: 3/32" = 1'-0"

PLAN DE LOCATION

425 Guy, Montréal, QC



AOÛT 2024 24043

préparé par DESIGN MFA Inc

