



Office Space For Sublease

2603 CAMINO RAMON, 3RD FLOOR | SAN RAMON, CA

Sycamore at Bishop Ranch puts your team in the heart of a vibrant, walkable campus with shaded pathways, lush landscaping, and effortless access to The Branch's café, lounges, and grab-and-go options. Tenants enjoy modern workspaces surrounded by parks, fitness trails, and on-site amenities that make the workday smoother and more enjoyable. It's a place where productivity meets lifestyle—right in the center of San Ramon's premier business community.

SIZE

±1,500 - ±3,500 available for Sublease

OCCUPANCY

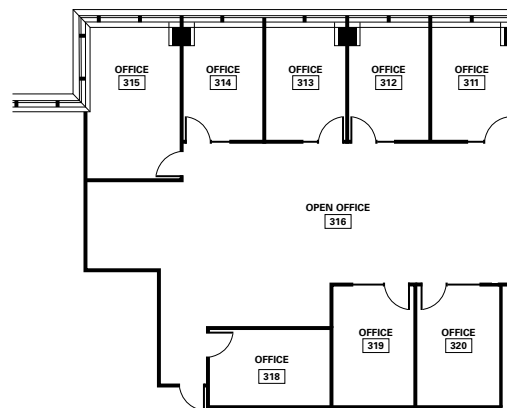
Available immediately

LEASE RATE

Asking rent \$2.25 full service | Plug n Play

LEASE EXPIRATION

12/1/2028



For information, please contact:

Justin Grilli

Senior Managing Director

t 925-997-1353

Justin.Grilli@nmrk.com

CA RE# 01410373

nmrk.com

NEWMARK

The information contained herein has been obtained from sources deemed reliable but has not been verified and no guarantee, warranty or representation, either express or implied, is made with respect to such information. Terms of sale or lease and availability are subject to change or withdrawal without notice.

RESTAURANT/MARKET PHOTO GALLERY



For information, please contact:

Justin Grilli

Senior Managing Director

t 925-997-1353

Justin.Grilli@nmrk.com

CA RE# 01410373

nmrk.com

NEWMARK

The information contained herein has been obtained from sources deemed reliable but has not been verified and no guarantee, warranty or representation, either express or implied, is made with respect to such information. Terms of sale or lease and availability are subject to change or withdrawal without notice.