

## Executive Summary



<b>SALE PRICE:</b>	Subject To Offer
<b>LOT SIZE:</b>	6.6866 Acres
<b>PIN #:</b>	556113128536
<b>ZONING:</b>	RV- Rural Village
<b>APPROVALS:</b>	Fully Approved
<b>TOWNSHIP:</b>	Washington Township
<b>SCHOOL DISTRICT:</b>	Northern-Lehigh
<b>COUNTY:</b>	Lehigh

### PROPERTY OVERVIEW

Introducing an exceptional opportunity to purchase 6.6866 acres of fully approved residential land in Slatington, PA. This property, zoned RV has a 14 home development fully approved and zoned. Boasting a prime position in Slatington which has not seen new development in quite some time, this parcel presents an ideal canvas for residential construction. Perfect opportunity for a developer to create a starter home, build to rent, or retirement community.

### PROPERTY FEATURES

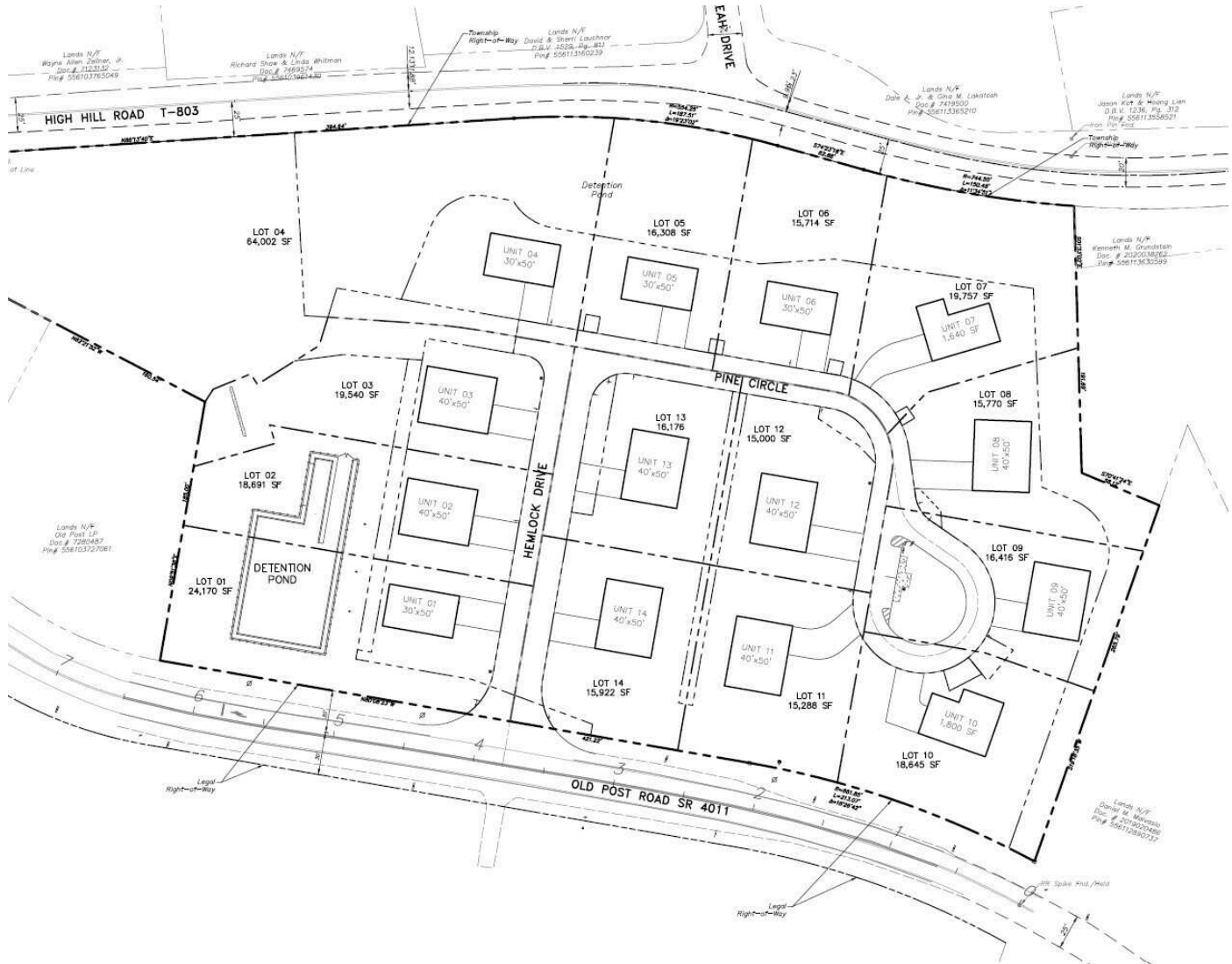
- Fully approved 14 single family home development
- Community septic
- On lot well water
- HOA Managed
- No curbs or sidewalks required
- Buyer will receive full CAD plans with the signing of an NDA

**CASEY KELLER**  
ckeller@feinbergrea.com  
Cell: 484.226.8081  
1 Direct: 610.709.6232

**CINDY MCDONNELL FEINBERG**  
cfeinberg@feinbergrea.com  
Cell: 610.360.9733  
Direct: 610.709.6233



## Old Post Development

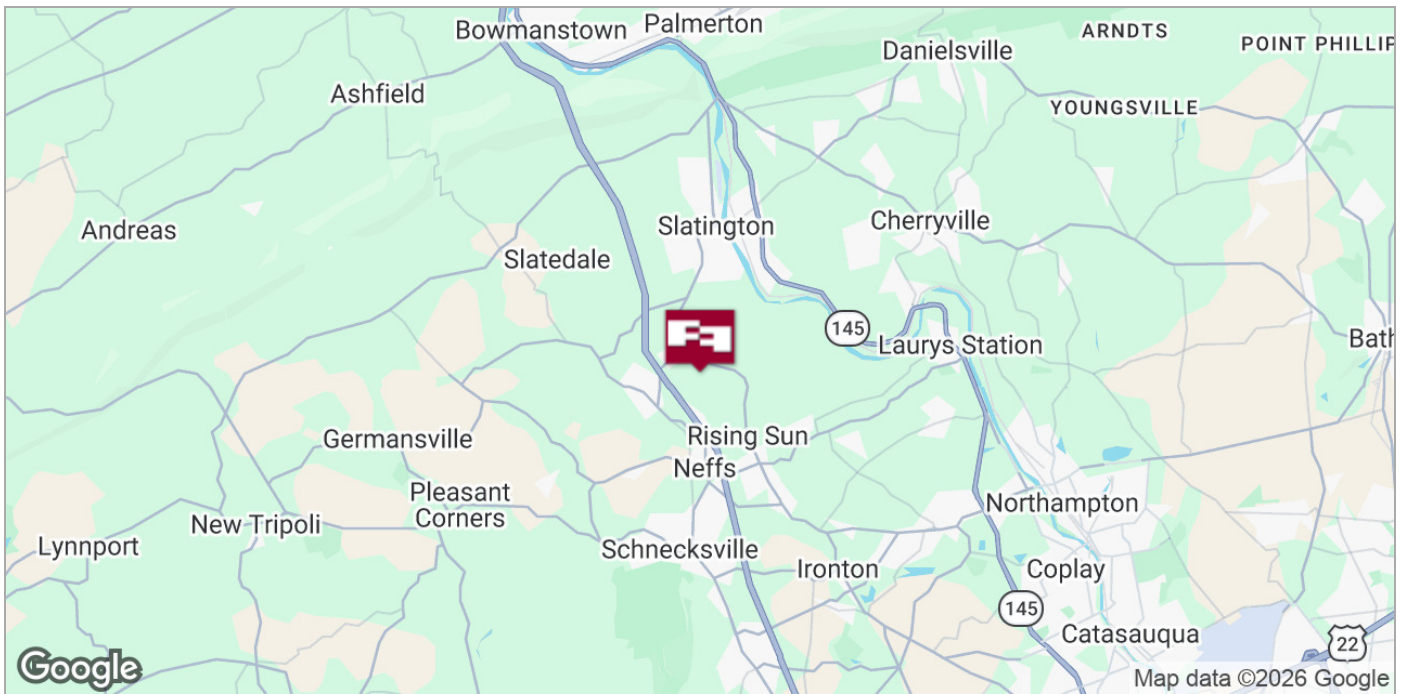


**CASEY KELLER**  
ckeller@feinbergrea.com  
Cell: 484.226.8081  
2 Direct: 610.709.6232

**CINDY MCDONNELL FEINBERG**  
cfeinberg@feinbergrea.com  
Cell: 610.360.9733  
Direct: 610.709.6233



## Location Maps

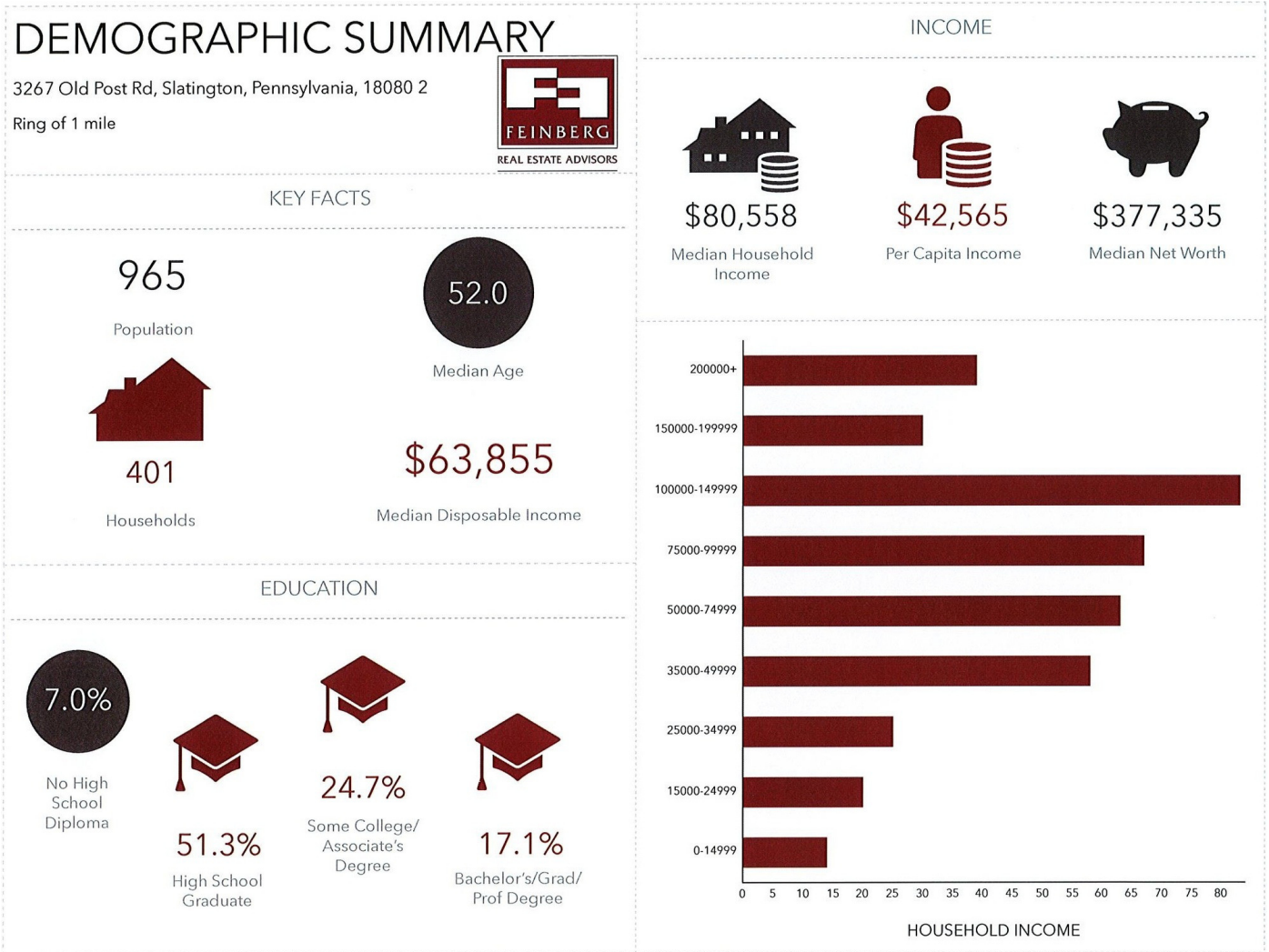


**CASEY KELLER**  
ckeller@feinbergrea.com  
Cell: 484.226.8081  
Direct: 610.709.6232

**CINDY MCDONNELL FEINBERG**  
cfeinberg@feinbergrea.com  
Cell: 610.360.9733  
Direct: 610.709.6233



## 1 Mile Demographics

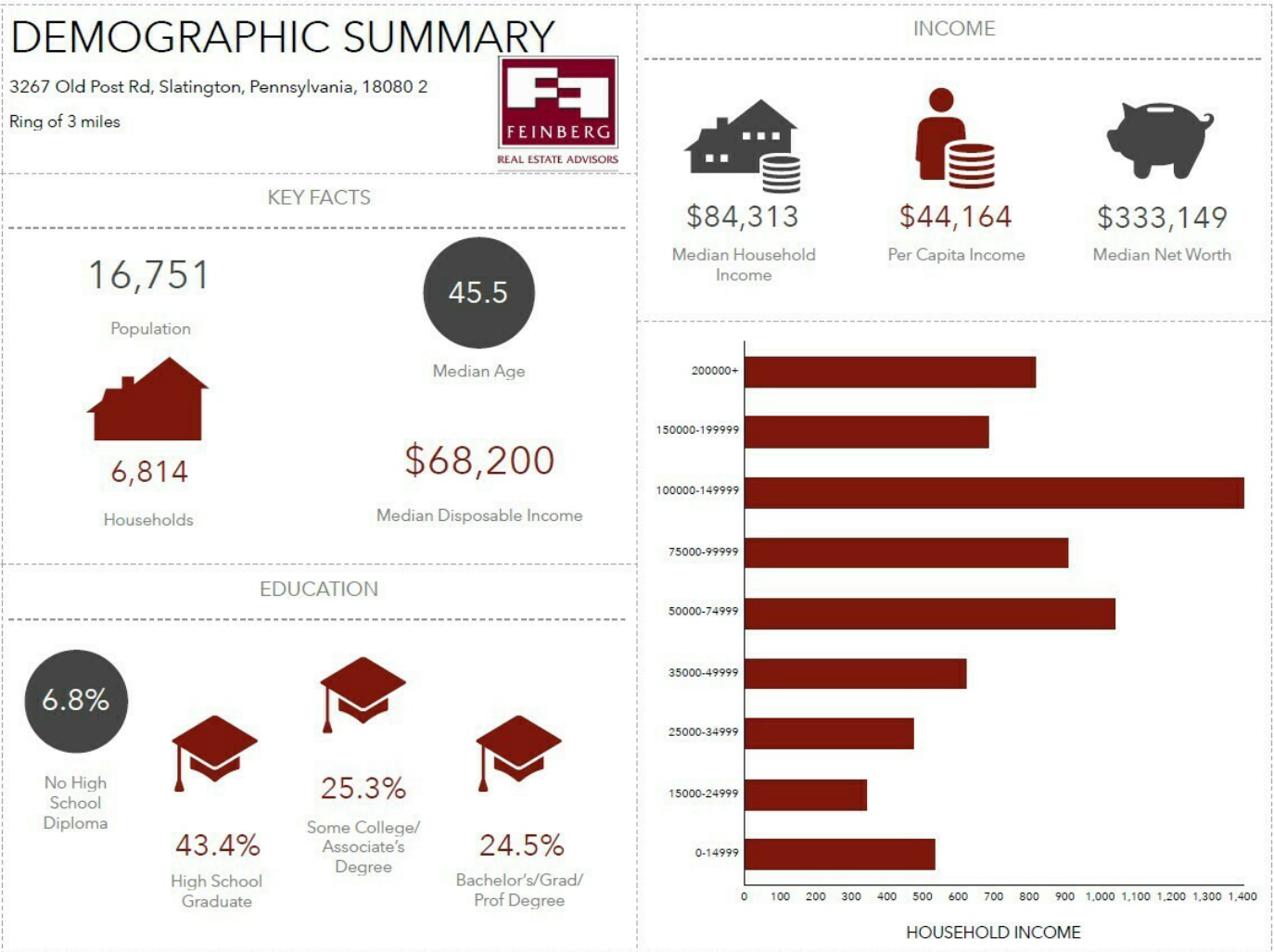


**CASEY KELLER**  
ckeller@feinbergrea.com  
Cell: 484.226.8081  
Direct: 610.709.6232

**CINDY MCDONNELL FEINBERG**  
cfeinberg@feinbergrea.com  
Cell: 610.360.9733  
Direct: 610.709.6233



## 3 Mile Demographics



**CASEY KELLER**  
ckeller@feinbergrea.com  
Cell: 484.226.8081  
Direct: 610.709.6232

**CINDY MCDONNELL FEINBERG**  
cfeinberg@feinbergrea.com  
Cell: 610.360.9733  
Direct: 610.709.6233





## Confidentiality & Disclaimer

### Confidentiality Disclaimer

All materials and information received or derived from Feinberg Real Estate Advisors, LLC its directors, officers, agents, advisors, affiliates and/or any third party sources are provided without representation or warranty as to completeness or accuracy, condition of the property, compliance or lack of compliance with applicable governmental requirements, suitability, financial performance of the property, projected financial performance of the property for any party's intended use or any and all other matters.

Neither Feinberg Real Estate Advisors, LLC its directors, officers, agents, advisors, or affiliates makes any representation or warranty, express or implied, as to accuracy or completeness of the any materials or information provided, derived, or received. Materials and information from any source, whether written or verbal, that may be furnished for review are not a substitute for a party's active conduct of its own due diligence to determine these and other matters of significance to such party. Feinberg Real Estate Advisors, Inc. will not investigate or verify any such matters or conduct due diligence for a party unless otherwise agreed in writing.

#### **EACH PARTY SHALL CONDUCT ITS OWN INDEPENDENT INVESTIGATION AND DUE DILIGENCE.**

Any party contemplating or under contract or in escrow for a transaction is urged to verify all information and to conduct their own inspections and investigations including through appropriate third party independent professionals selected by such party. All financial data should be verified by the party including by obtaining and reading applicable documents and reports and consulting appropriate independent professionals. Feinberg Real Estate Advisors, LLC makes no warranties and/or representations regarding the veracity, completeness, or relevance of any financial data or assumptions. Feinberg Real Estate Advisors does not serve as a financial advisor to any party regarding any proposed transaction.

All data and assumptions regarding financial performance, including that used for financial modeling purposes, may differ from actual data or performance. Any estimates of market rents and/or projected rents that may be provided to a party do not necessarily mean that rents can be established at or increased to that level. Parties must evaluate any applicable contractual and governmental limitations as well as market conditions, vacancy factors and other issues in order to determine rents from or for the property. Legal questions should be discussed by the party with an attorney. Tax questions should be discussed by the party with a certified public accountant or tax attorney. Title questions should be discussed by the party with a title officer or attorney. Questions regarding the condition of the property and whether the property complies with applicable governmental requirements should be discussed by the party with appropriate engineers, architects, contractors, other consultants and governmental agencies.

**CASEY KELLER**  
**ckeller@feinbergrea.com**  
**Cell: 484.226.8081**  
**6 Direct: 610.709.6232**

**CINDY MCDONNELL FEINBERG**  
**cfeinberg@feinbergrea.com**  
**Cell: 610.360.9733**  
**Direct: 610.709.6233**

