



## 1350 TOUHY PLAZA



1350 Touhy Plaza  
Des Plaines, Illinois

# O'Hare's Best Value... at a *Discount!*

21,111 SF CLASS A OFFICE SPACE IMMEDIATELY  
AVAILABLE **FOR SUBLEASE**

- > Available: Suite 200W (21,111 sf)
- > Asking Rent: **\$12/sf Gross**
- > Immediate Occupancy
- > Term to May 31, 2028
- > Conference Center



Easy access to I-90,  
I-294, and less than a  
mile from O'Hare Airport



Fully-equipped fitness  
center



Halsted Street Deli  
located on first floor



215 heated,  
underground parking  
spaces

For more information, please contact:

Fred Ishler, Principal  
+1 312 796 0368  
fred.ishler@avisonyoung.com

**AVISON  
YOUNG**

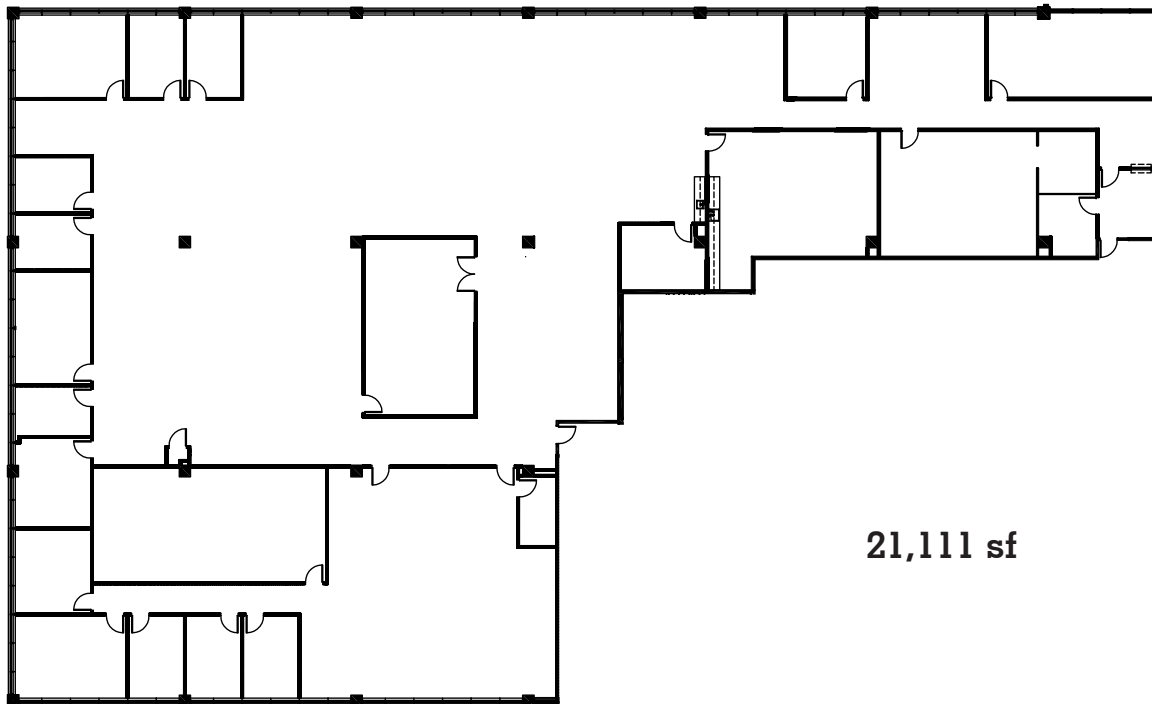
# Photo Gallery

# Office Space for Sublease 1350 Touhy Plaza, Des Plaines, IL 60018



## Office For Sublease

1350 Touhy Plaza, Des Plaines, IL 60018



Just 30 minutes from Chicago's Loop, 1350 Touhy Plaza offers the perfect balance of suburban comfort and urban accessibility. With immediate access to I-90 and I-294, and located less than a mile from O'Hare International Airport and the Allstate Arena, this property provides unparalleled convenience for commuters and travelers alike. Enjoy a professional office environment designed to meet today's business needs, all in a highly connected location.



On-site amenities include a fully equipped tenant fitness center, Halsted Street Deli on the first floor, and 215 heated underground parking spaces. Highly visible building-top signage is available, offering exceptional branding opportunities in this prime location.



**For more information, please contact:**

Fred Ishler, Principal  
+1 312 796 0368  
fred.ishler@avisonyoung.com

**AVISON  
YOUNG**