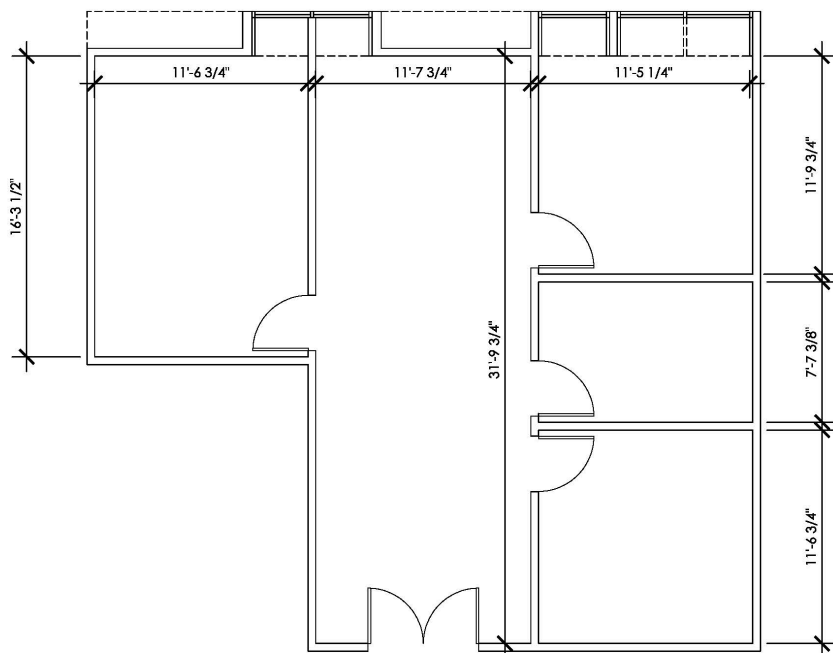


4540 Kearny Villa Rd # 213 San Diego CA



TYPE: Office Condo - Fully Built Out
PRICE: Negotiable
DESIGN: Built out for Professional, Legal, CPA, Ect. Three Offices & Open Area
SIZE: 1,016 SF
USE: Professional Office

EASY TOUR - JUST CALL



HIGHLIGHTS:

- Functional Layout
- Low HOA (\$388 per Unit)
- Free Parking
- Centrally Located in San Diego
- Conveniently right off the 163 freeway
- All are Water / Sewer Served

FLOOR PLAN
 4540 KEARNY VILLA RD #213
 SAN DIEGO, CA 92123
 SCALE 3/16" = 1'-0" (ON 8.5"X11")