

# 100

PEACHTREE



ATLANTA, GEORGIA

SPEC SUITE OFFERINGS

 Zeller

 JLL

# 100 ICONIC BY DESIGN

100 Peachtree's iconic profile anchors the Downtown skyline, while interior environments reflect contemporary workplace needs—adaptable layouts, technology-ready infrastructure, wellness-focused design, and collaborative spaces. Class A doesn't mean outdated formality. It means excellence in every detail, from lobby to office.



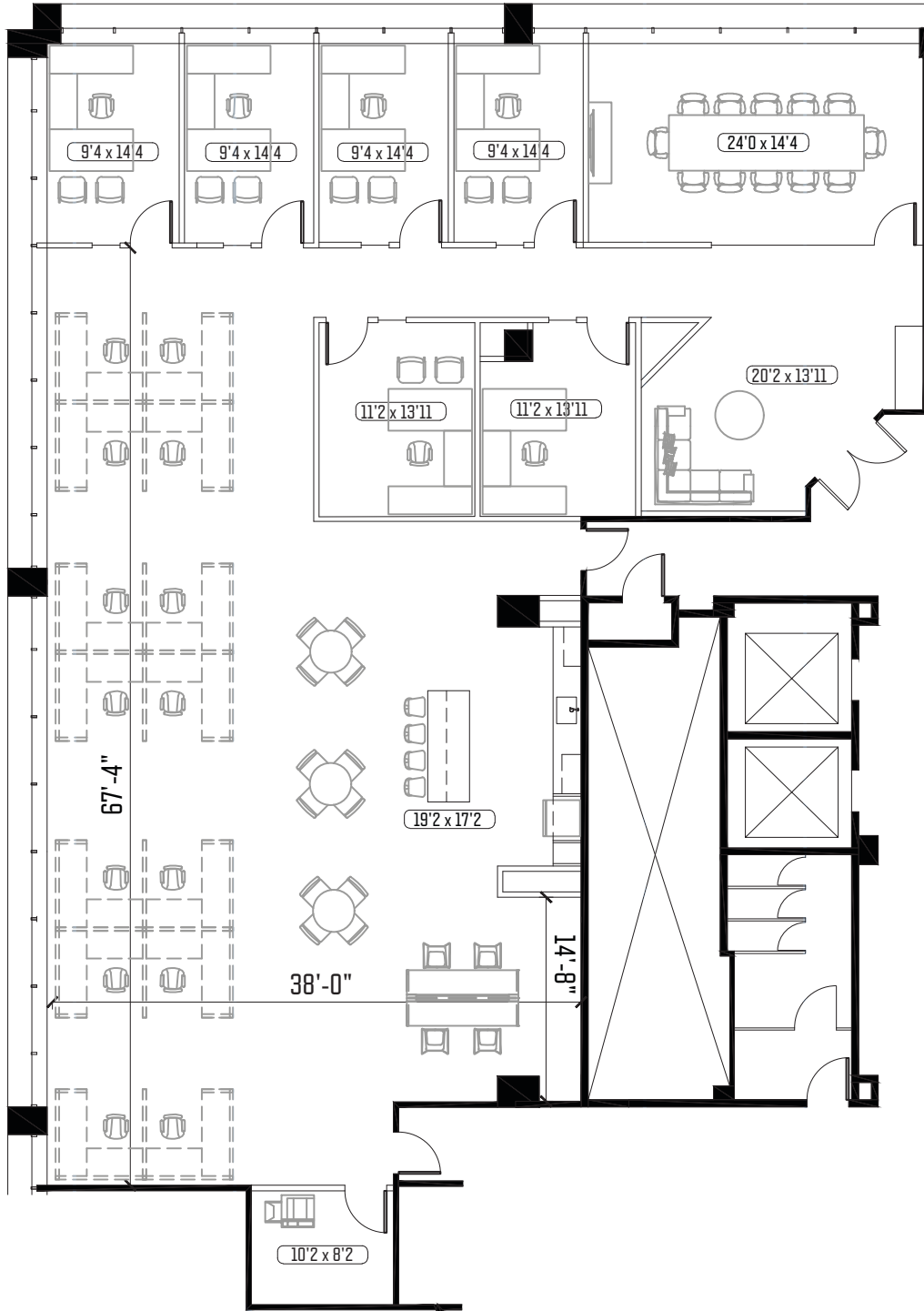
WiredScore  
SILVER



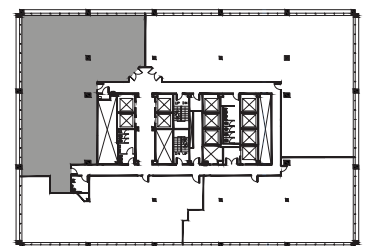
# SUITE 1900

5,143 SF

100  
PEACHTREE



Tour Suite 1900

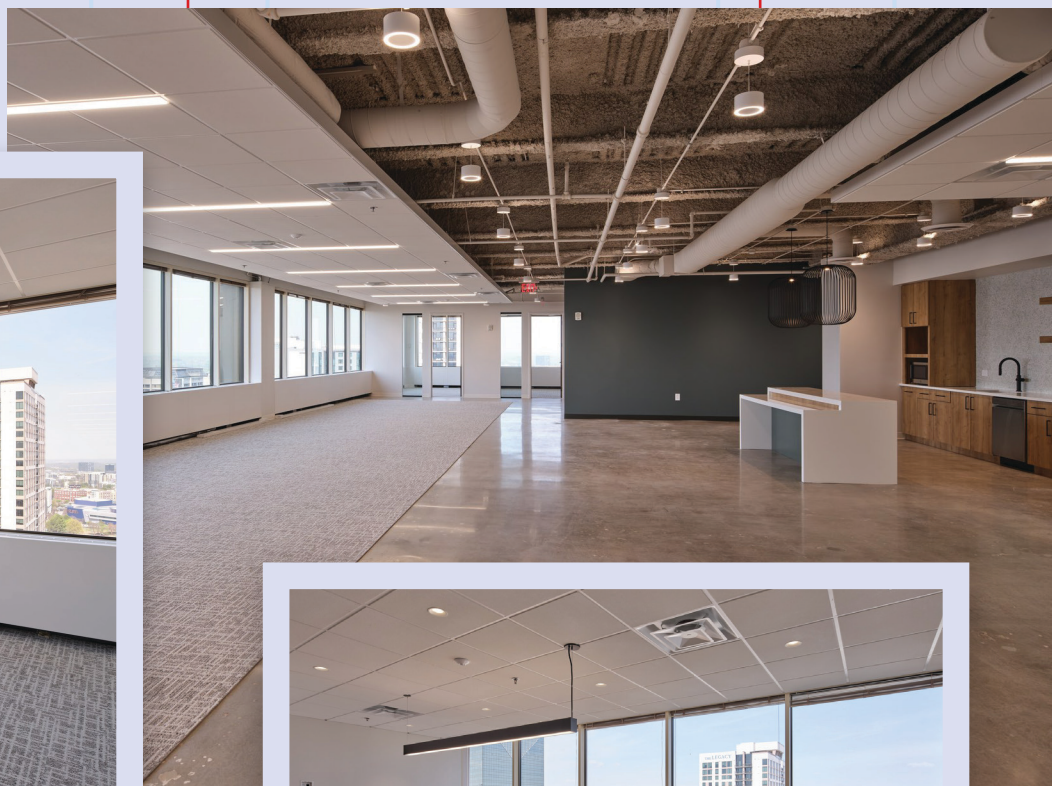


KEY PLAN

# SUITE 1900



# SUITE 1900

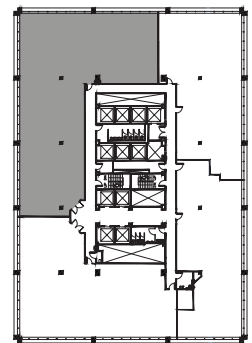
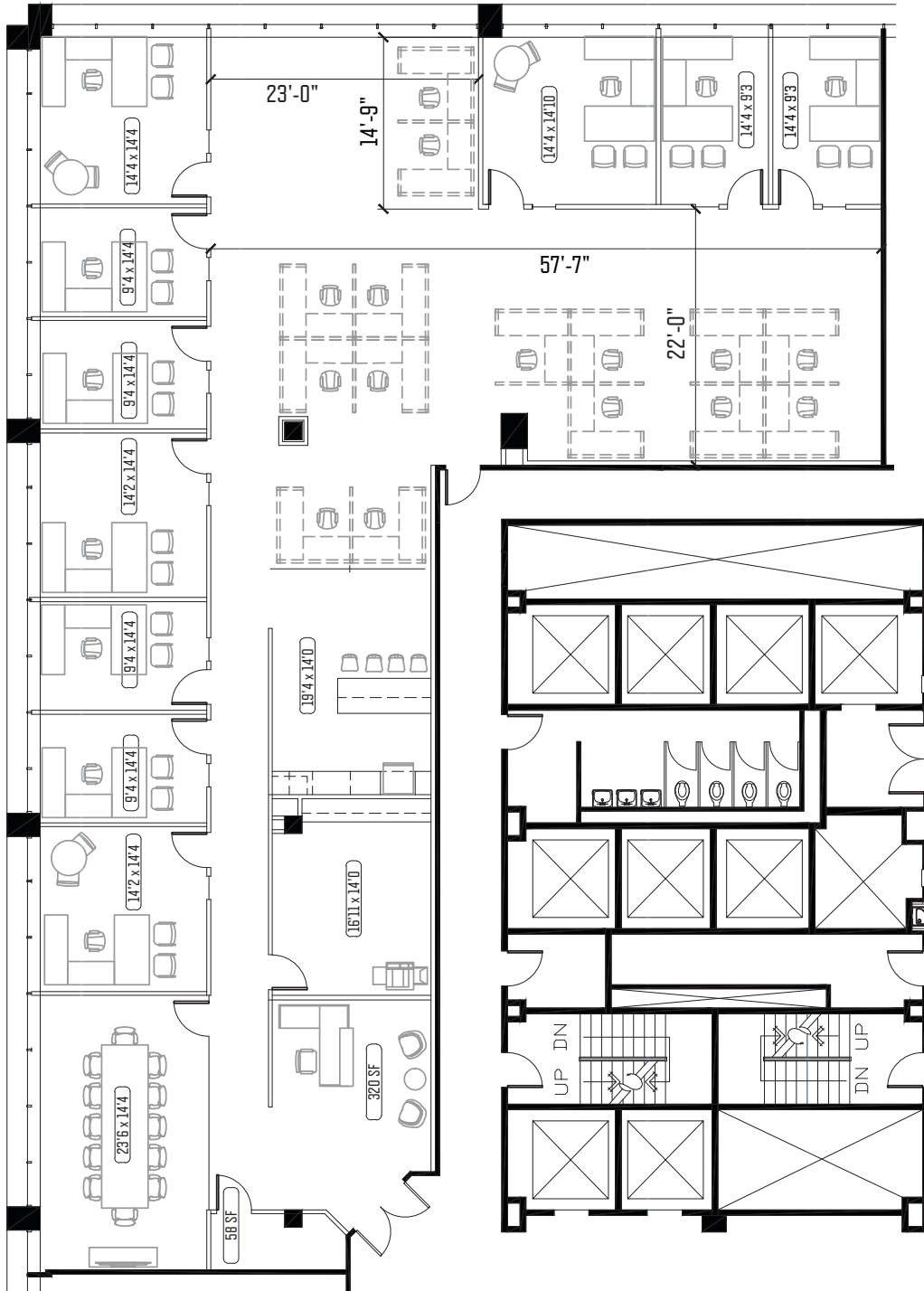


# SUITE 1910

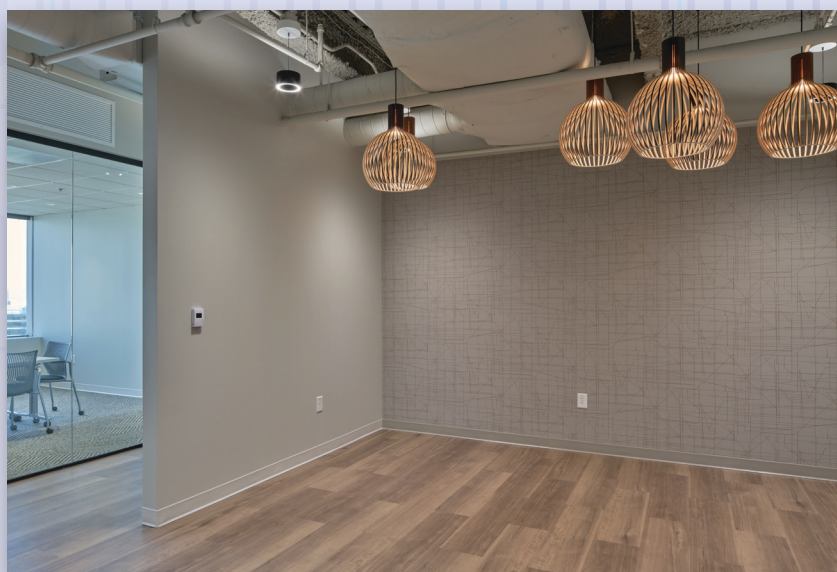
## 6,456 SF

# 100

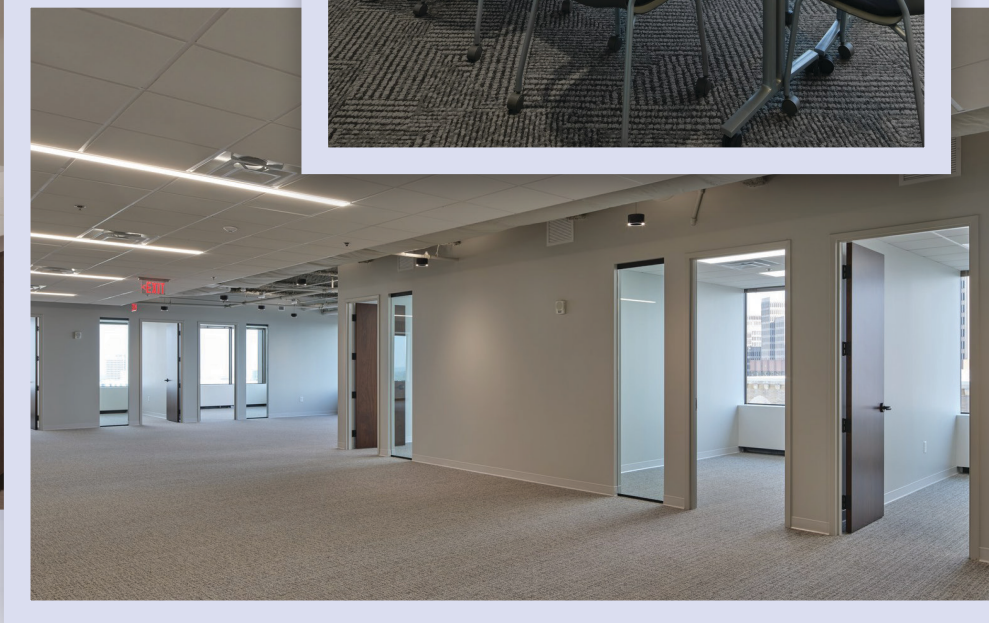
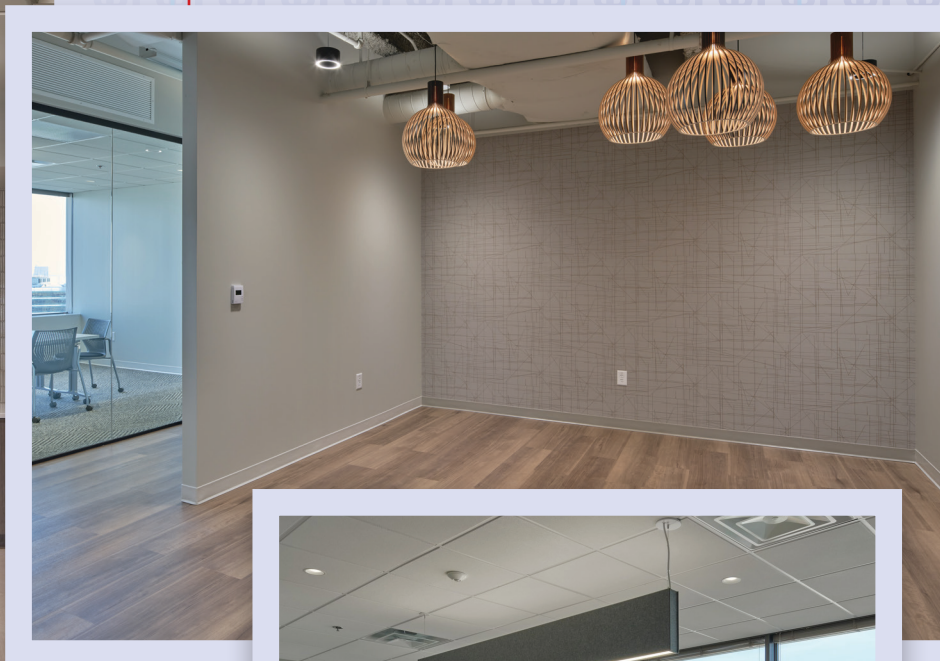
PEACHTREE



# SUITE 1910



# SUITE 1910



# EVERYTHING YOU NEED.



# 100

## PEACHTREE

100 Peachtree Street NW Atlanta, GA 30303  
100peachtreestreet.com



## CONTACT

Brooke Dewey  
+1 404 995 2138  
brooke.dewey@jll.com

David Horne  
+1 404 995 6321  
david.horne@jll.com



### DISCLAIMER:

Although information has been obtained from sources deemed reliable, JLL does not make any guarantees, warranties or representations, express or implied, as to the completeness or accuracy as to the information contained herein. Any projections, opinions, assumptions or estimates used are for example only. There may be differences between projected and actual results, and those differences may be material. JLL does not accept any liability for any loss or damage suffered by any party resulting from reliance on this information. If the recipient of this information has signed a confidentiality agreement with JLL regarding this matter, this information is subject to the terms of that agreement. ©2026 Jones Lang LaSalle Brokerage, Inc. All rights reserved.