

naislect.com

# SOUTHEAST BOISE RETAIL SPACE

FOR LEASE

2351 S. Apple St.  
Boise, ID 83706

**NAI**Select



### PROPERTY INFORMATION

<b>PROPERTY TYPE</b>	Retail
<b>LEASE RATE</b>	Contact Agent
<b>AVAILABLE SPACE</b>	±1,200 - ±1,560 SF
<b>ADDRESS</b>	2351 S. Apple St. Boise, ID 83706
<b>LEASE TERM</b>	Negotiable
<b>LEASE TYPE</b>	NNN

### HIGHLIGHTS

- Prime Southeast Boise location with convenient access to I-84, Downtown Boise, and the Boise Airport
- Flexible industrial/flex space suitable for a variety of owner-user or investment opportunities
- Functional layout with warehouse and office components
- Excellent accessibility via Apple St and surrounding arterial corridors
- Located within an established industrial/commercial submarket
- Ample on-site parking and circulation

This information was obtained from sources believed reliable but cannot be guaranteed and is subject to change at any time. Any opinions or estimates are used for example only.

**TRAVIS DUNN**

208.229.6005 | [travis@naiselect.com](mailto:travis@naiselect.com)

**RILEY WIEDMEIER, MBA**

208.954.2229 | [riley@naiselect.com](mailto:riley@naiselect.com)



**TRAVIS DUNN**

208.229.6005 | [travis@naiselect.com](mailto:travis@naiselect.com)

**RILEY WIEDMEIER, MBA**

208.954.2229 | [riley@naiselect.com](mailto:riley@naiselect.com)

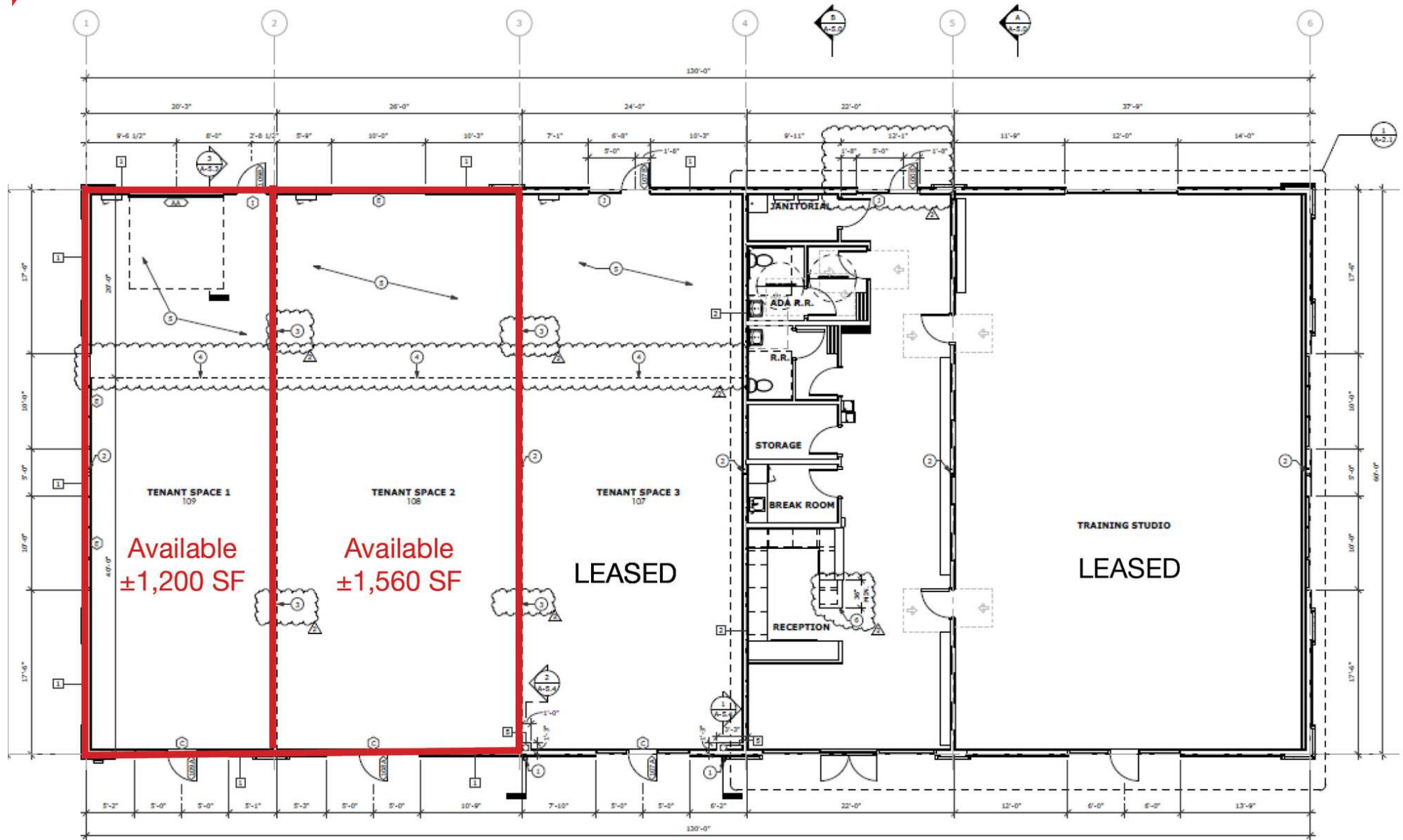


**TRAVIS DUNN**

208.229.6005 | [travis@naiselect.com](mailto:travis@naiselect.com)

**RILEY WIEDMEIER, MBA**

208.954.2229 | [riley@naiselect.com](mailto:riley@naiselect.com)

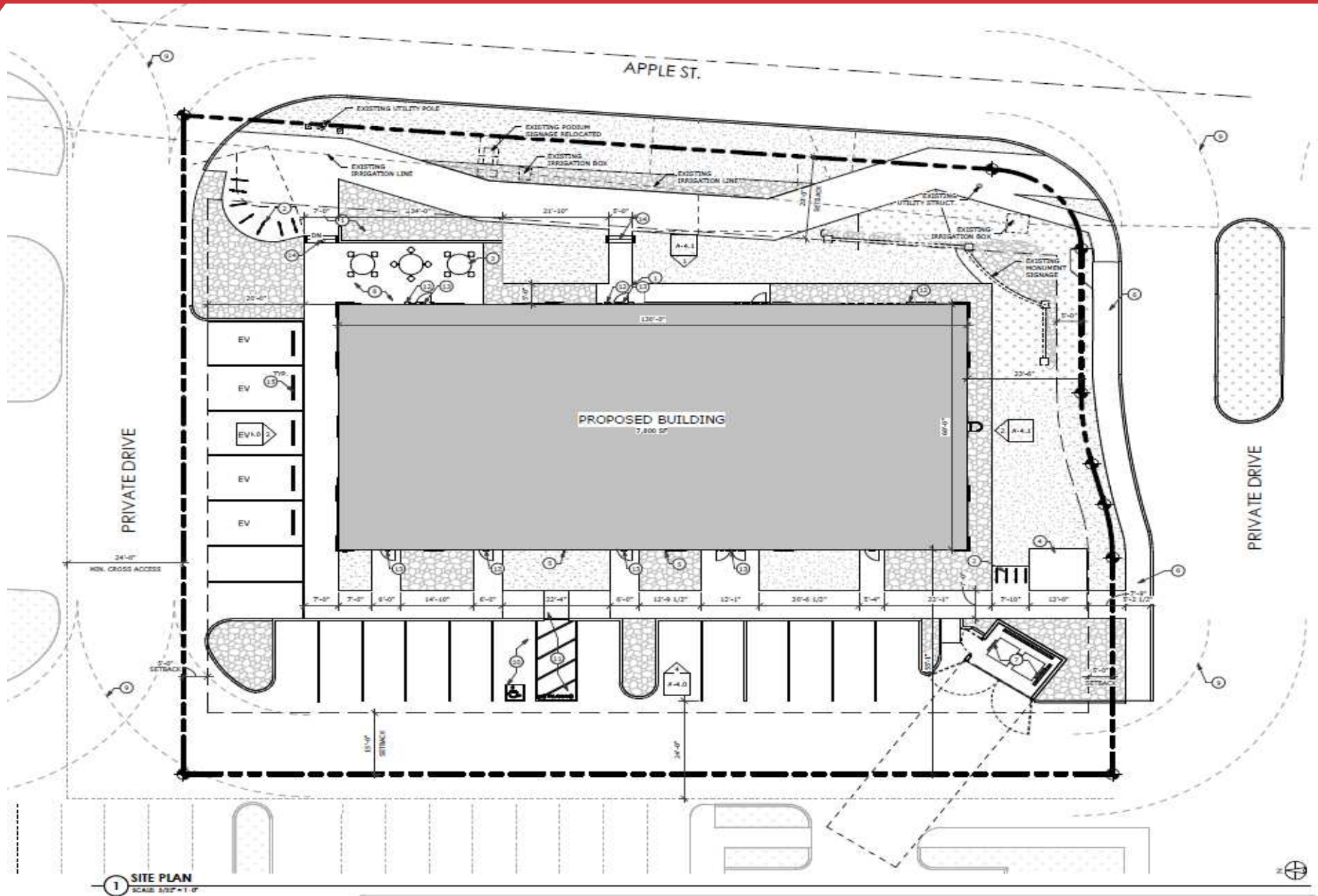


**TRAVIS DUNN**

208.229.6005 | [travis@naiselect.com](mailto:travis@naiselect.com)

**RILEY WIEDMEIER, MBA**

208.954.2229 | [riley@naiselect.com](mailto:riley@naiselect.com)

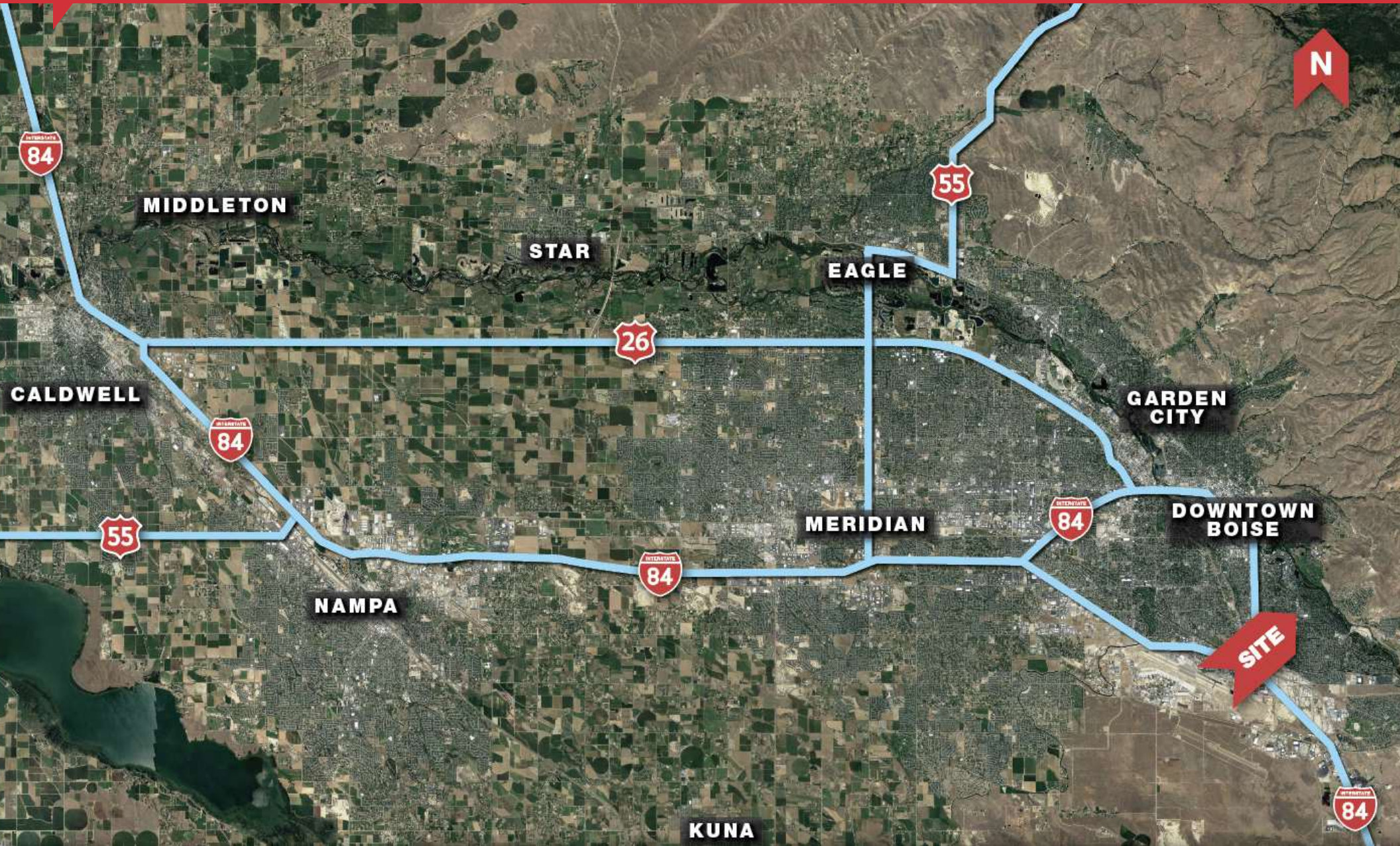


**TRAVIS DUNN**

208.229.6005 | [travis@naiselect.com](mailto:travis@naiselect.com)

**RILEY WIEDMEIER, MBA**

208.954.2229 | [riley@naiselect.com](mailto:riley@naiselect.com)



**TRAVIS DUNN**

208.229.6005 | [travis@naiselect.com](mailto:travis@naiselect.com)

**RILEY WIEDMEIER, MBA**

208.954.2229 | [riley@naiselect.com](mailto:riley@naiselect.com)