

# PACTRUST BUSINESS CENTER

1,349 Sq. Ft.  
Office Space For Lease

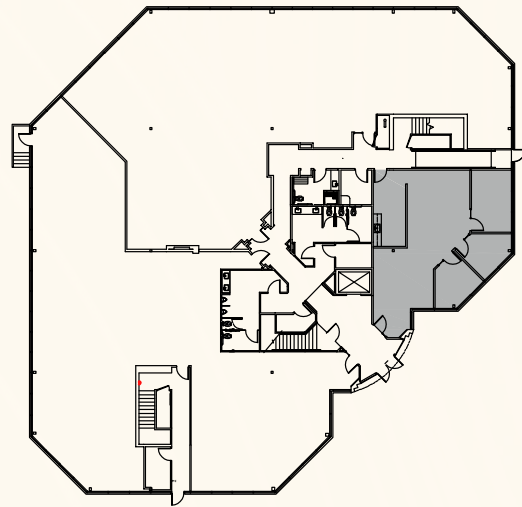
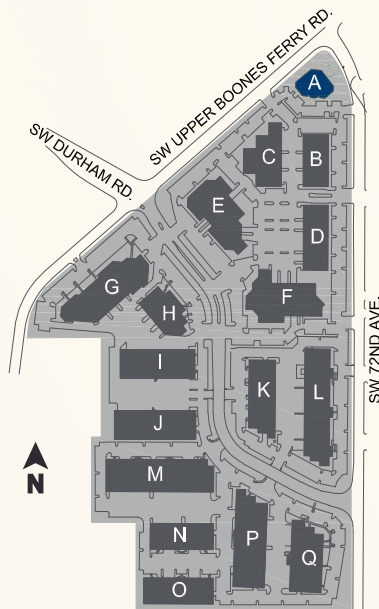
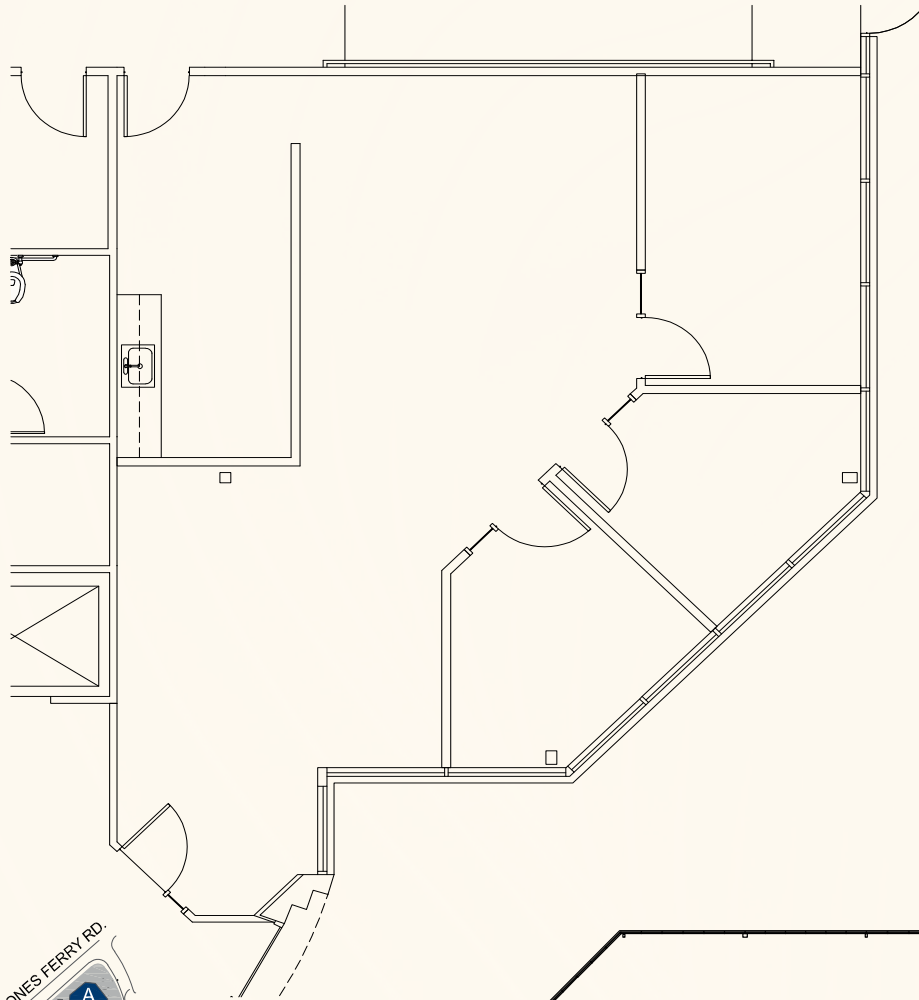


16101 SW 72nd Ave, Suite 100, Portland, OR 97224

**PACTRUST**

### Space Plan | Suite 100

**PacTRUST**



**Building Plan**

# Key Features



1,349 sq. ft shell

Direct access from building entrance

Upgraded finishes in suite

Updated common areas

Outdoor seating area

Walking distance to a variety of amenities

Excellent access to I-5 and Hwy 217

Less than a mile to Bridgeport Village

**Lease Rate:**  
**\$30.00/sq. ft./yr.**

**Full Service**



# Leasing Contacts

Jake Bigby  
jakeb@pactrust.com

Caitlin Knecht  
caitlink@pactrust.com

503.624.6300  
www.pactrust.com

Owned & Managed by

**PacTrust**

PacTrust Business Center  
Office Space For Lease

16101 SW 72nd Ave  
Suite 100  
Portland, OR 97224

