

FOR LEASE

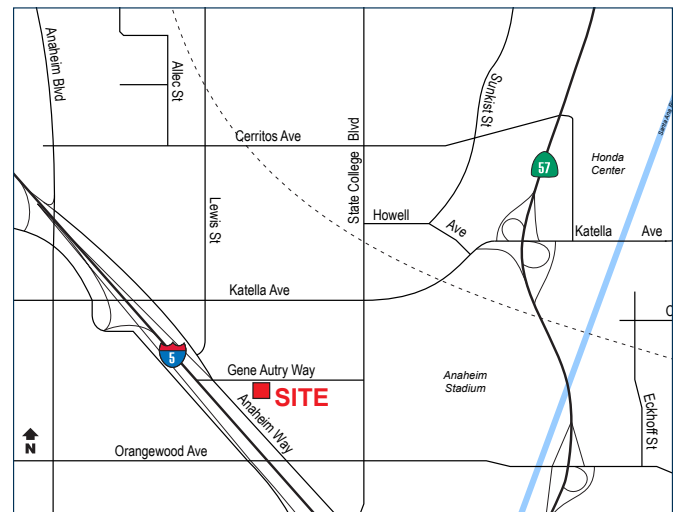
±9,490 SQ. FT.
Major Street Frontage

1200 E. GENE AUTRY WAY | ANAHEIM | CA



PROPERTY FEATURES

- ± 1,750 SF of Office Area
- Major Street Frontage
- 600 Amps, 277/480 Volt Power
- 15 Parking Stalls
- Two (2) Ground Level Loading Doors
- 16' Minimum Warehouse Clearance
- Stadium Location
- Fire Sprinklered
- Immediate Freeway Access



MIKE HEFNER, SIOR
Executive Vice President | Partner
(714) 935-2331
mhefner@voitco.com
License #00857352

BRENDEN HEFNER
Senior Associate
(714) 935-2326
bhefner@voitco.com
License #02114046

Voit
REAL ESTATE SERVICES

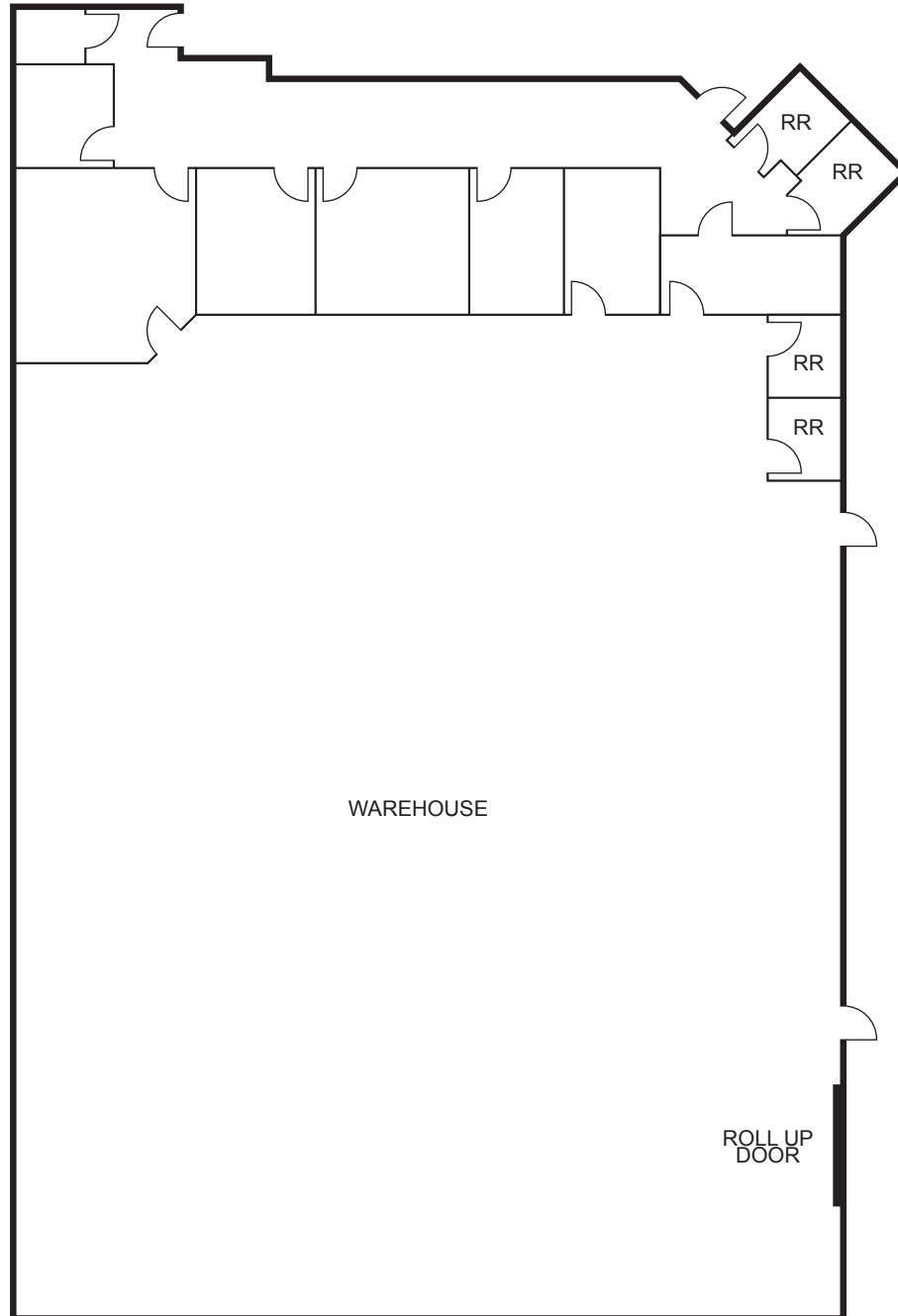
HV HEFNER
VERNICK
TEAM

2400 E. Katella Ave., Suite 750
Anaheim, CA 92806
www.VoitCo.com

FOR LEASE

±9,490 SQ. FT.
Major Street Frontage

1200 E. GENE AUTRY WAY | ANAHEIM | CA



**Not to scale*

MIKE HEFNER, SIOR
Executive Vice President | Partner
(714) 935-2331
mhefner@voitco.com
License #00857352

BRENDEN HEFNER
Senior Associate
(714) 935-2326
bhefner@voitco.com
License #02114046

Voit
REAL ESTATE SERVICES

HV HEFNER
VERNICK
TEAM

2400 E. Katella Ave., Suite 750
Anaheim, CA 92806
www.VoitCo.com