



# VALUE INDUSTRIAL PARTNERS, LLC

Industrial Real Estate Investment, Brokerage and Management

477 W. Wrightwood Avenue, Elmhurst, Illinois 60126 TEL: 630-333-1900 FAX: 630-333-1910

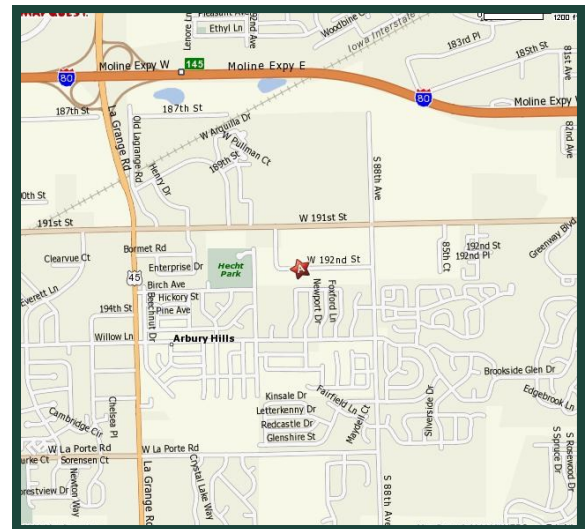


## 8910 W. 192nd Street, Units F & G Mokena, Illinois

## FOR LEASE 12,730 SF

### Building Specifications

Available Size:	12,730 Square Feet
Building Size:	68,929 Square Feet
Office:	20%
Ceiling Height:	15'
Power:	400 Amps, 120/208 Volts
Loading:	4 Exterior Docks (Common) 4 Exterior Low Docks (Exclusive)
Bay Size:	40' x 40'
Sprinklers:	Yes
Heat:	Gas
Real Estate Taxes:	Current Stop Included
CAM:	Current Stop Included



**For Further Information, Please Contact:**

**Brian P. Gedvilas, Director of Leasing**  
bgedvilas@valueindustrialpartners.com

**Brian M. Liston, Principal**  
bliston@valueindustrialpartners.com

**TEL: 630-333-1900 FAX: 630-333-1910**

### Comments

- Professionally owned and managed
- Minutes to I-80 at LaGrange Road or Harlem Avenue
- Minutes to I-355 and I-57 via I-80
- Unique low docks ideal for delivery vans

Officers of the firm have an ownership interest in this property.  
Submitted subject to error, change in status, or withdrawal without notice.

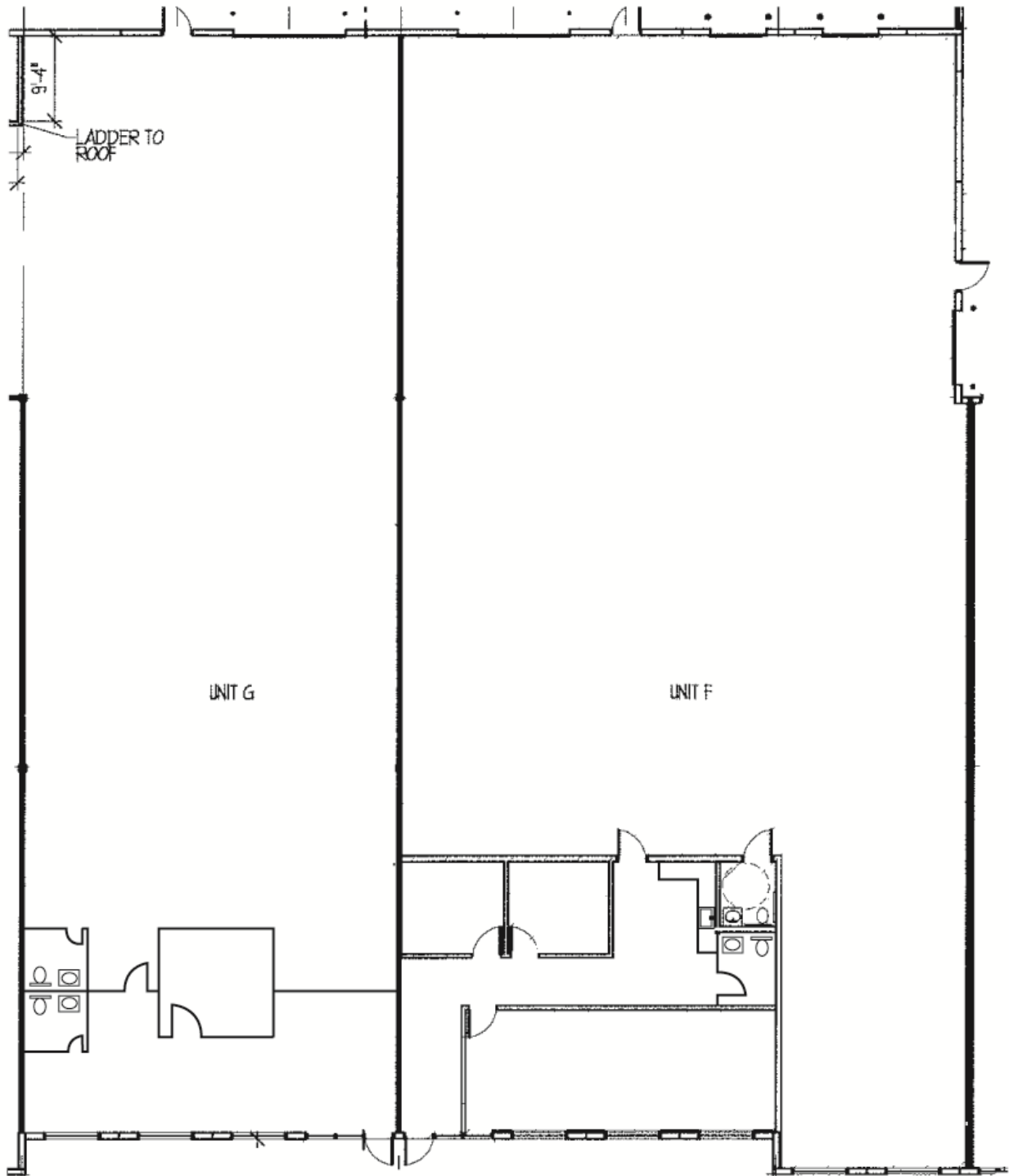


# VALUE INDUSTRIAL PARTNERS, LLC

Industrial Real Estate Investment, Brokerage and Management

477 W. Wrightwood Avenue, Elmhurst, Illinois 60126 TEL: 630-333-1900 FAX: 630-333-1910

## LAYOUT



Officers of the firm have an ownership interest in this property.  
Submitted subject to error, change in status, or withdrawal without notice.