



ALPHA  
PROFESSIONAL PLAZA  
PAIN DENTAL LLC  
Dr. David Nguyen  
118  
Michael R. Schmitt  
Allergists of Lane  
128  
SLATER FAMILY DENTAL  
138  
Dr. F. Caldwell, D.M.D.  
148  
Dentist: Dr. Peter Associates  
158  
Brian J. Calvert, D.M.D.  
178

**ALPHA**  
PROFESSIONAL  
PLAZA

3895

ENTRANCE

LOADING ZONE

FOR LEASE

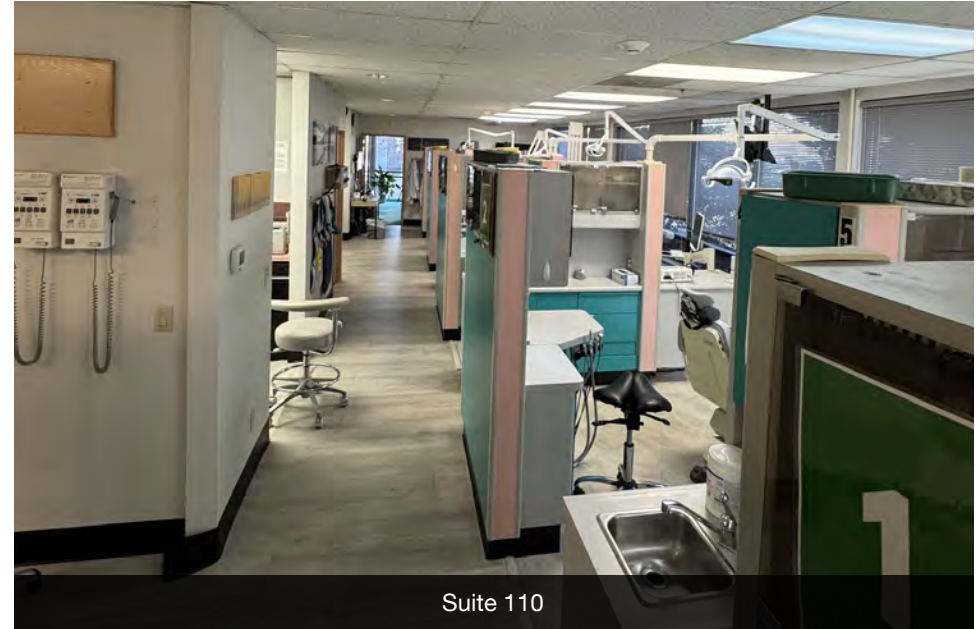
# ALPHA PROFESSIONAL PLAZA

3895 SW 185TH AVENUE, BEAVERTON, OR 97007

**JAKE BREELAND**  
503.972.7295  
jbreeland@macadamforbes.com

**CHARLES HASELWOOD**  
503.515.6959  
charles@macadamforbes.com





## PROPERTY DESCRIPTION

Located in the heart of the Aloha, with major intersections of TV Hwy and 185th nearby. Ideally situated to be 'on the way' for customers and employees alike.

Modified gross lease structure with tenant responsible for rent and electricity only. Landlord pays all other expenses.

## OFFERING SUMMARY

<b>Lease Rate:</b>	Contact brokers - Ask about free rent & TI allowance
<b>Building Size:</b>	14,000 SF
<b>Available SF:</b>	1,817 - 2,462 SF
<b>Zoning:</b>	NMU

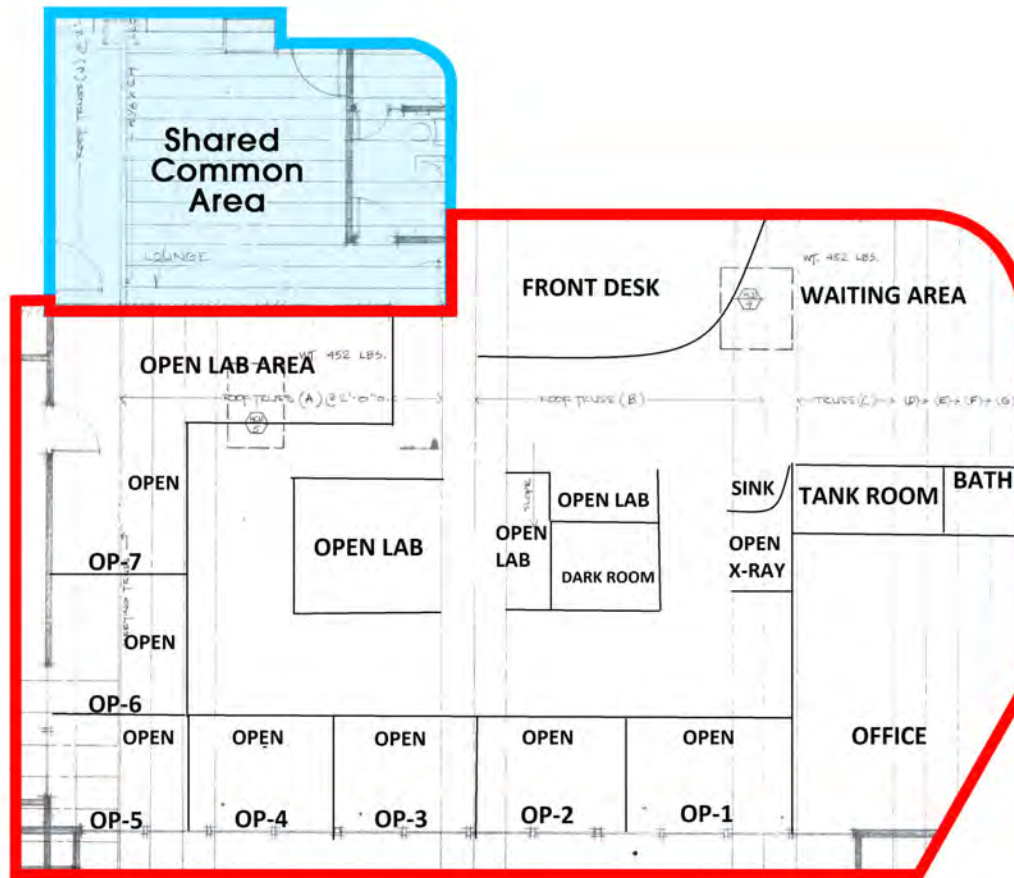


**JAKE BREELAND**

503.972.7295 | jbreeland@macadamforbes.com

**CHARLES HASELWOOD**

503.515.6959 | charles@macadamforbes.com



**AVAILABLE SPACES**

SUITE	SIZE (SF)	LEASE RATE	DESCRIPTION
■ Suite 110	2,462 SF	Contact Brokers	Seven chair setups One private office with restroom Shared common area lounge with private bathroom

**JAKE BREELAND**

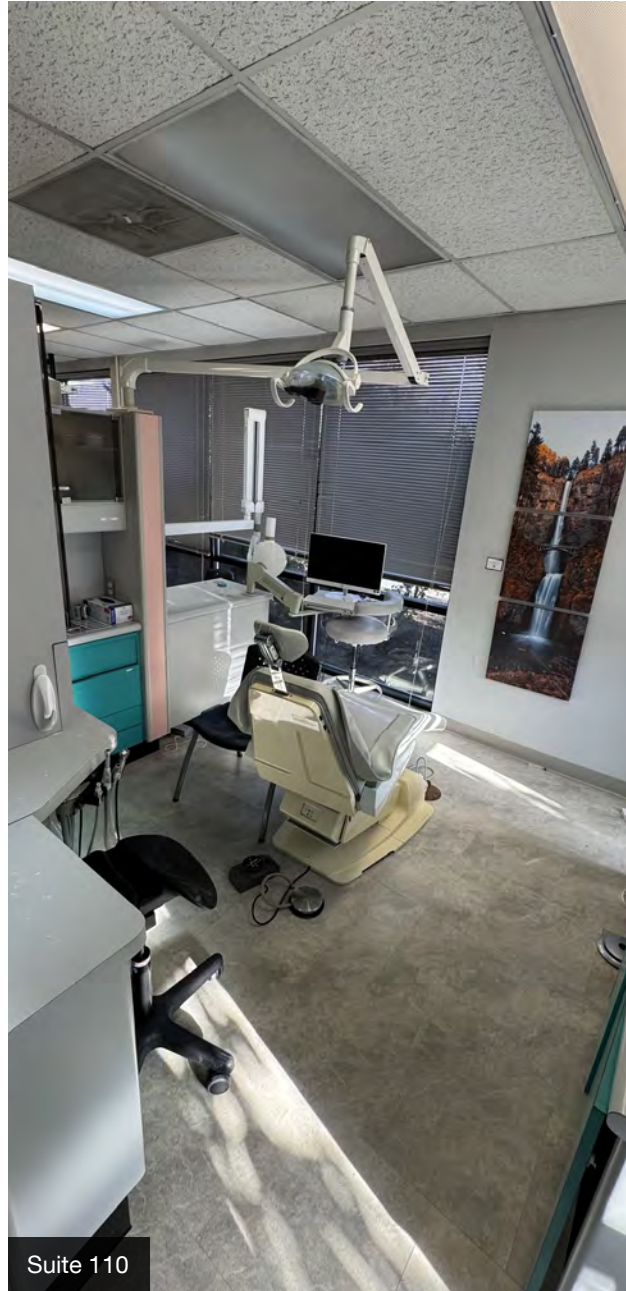
503.972.7295 | jbreeland@macadamforbes.com

**CHARLES HASELWOOD**

503.515.6959 | charles@macadamforbes.com



Suite 110



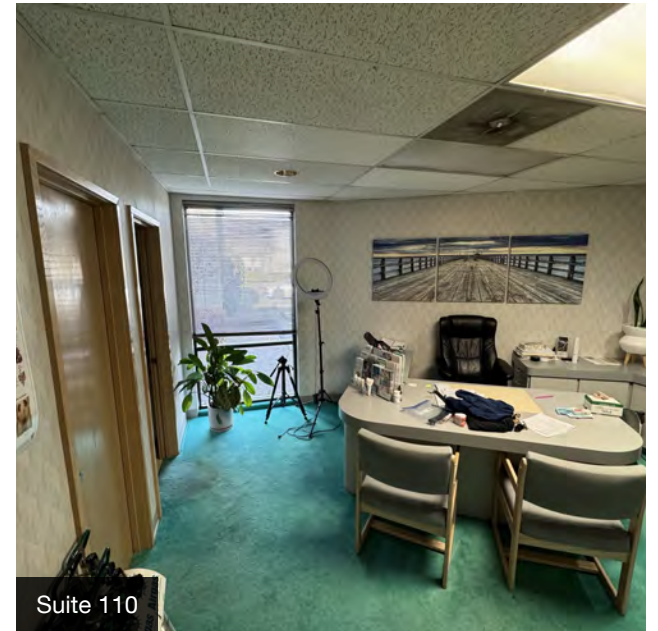
Suite 110



Suite 110



Suite 110



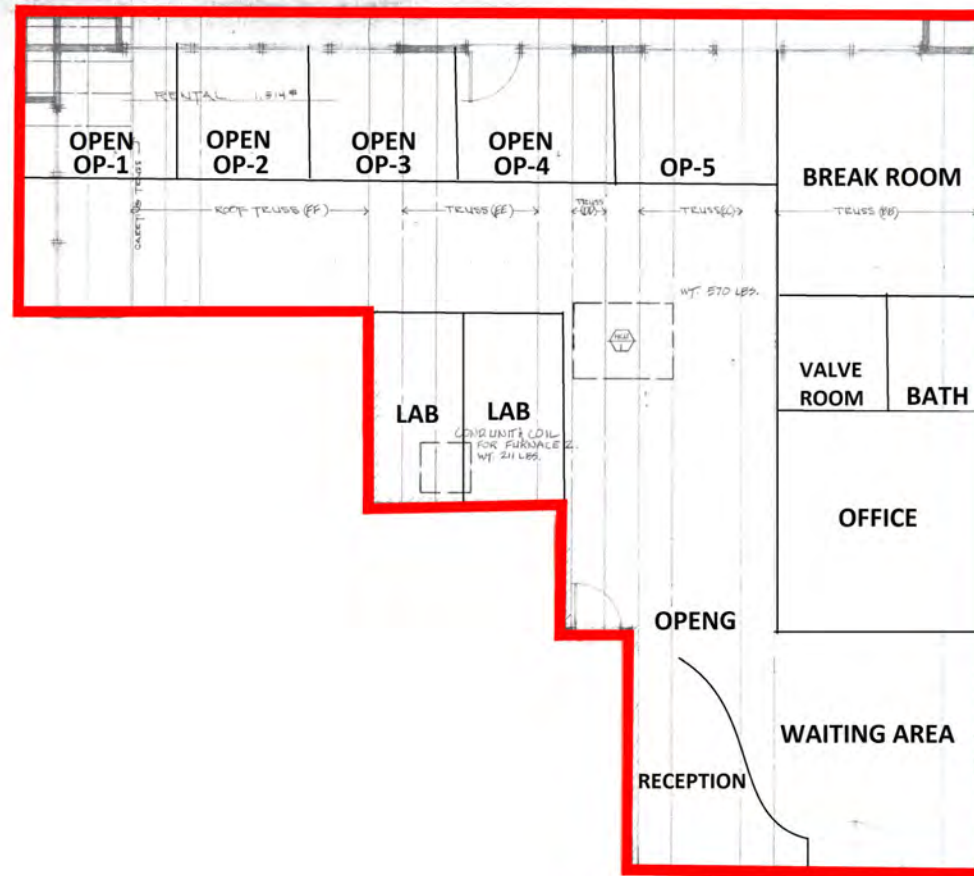
Suite 110

**JAKE BREELAND**

503.972.7295 | [jbreeland@macadamforbes.com](mailto:jbreeland@macadamforbes.com)

**CHARLES HASELWOOD**

503.515.6959 | [charles@macadamforbes.com](mailto:charles@macadamforbes.com)



**AVAILABLE SPACES**

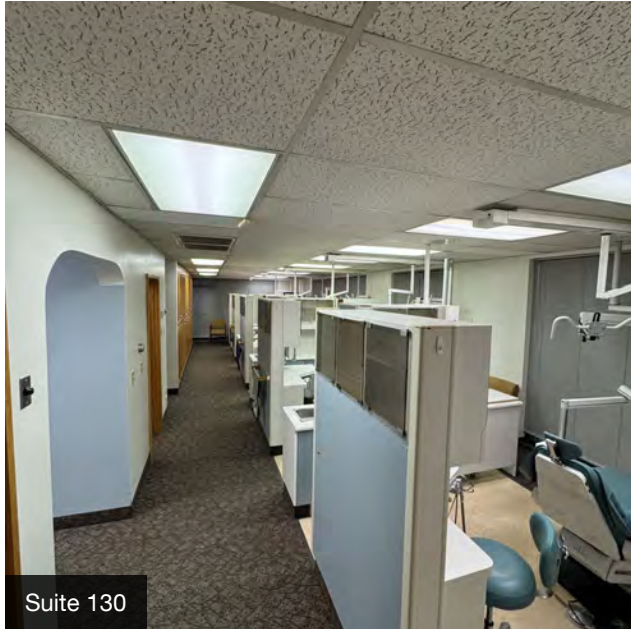
SUITE	SIZE (SF)	LEASE RATE	DESCRIPTION
■ Suite 130	1,817 SF	Contact Brokers	Medical Office Build out ideal for a dental practice. Two private offices Two workrooms One x-ray room Five chair set ups

**JAKE BREELAND**

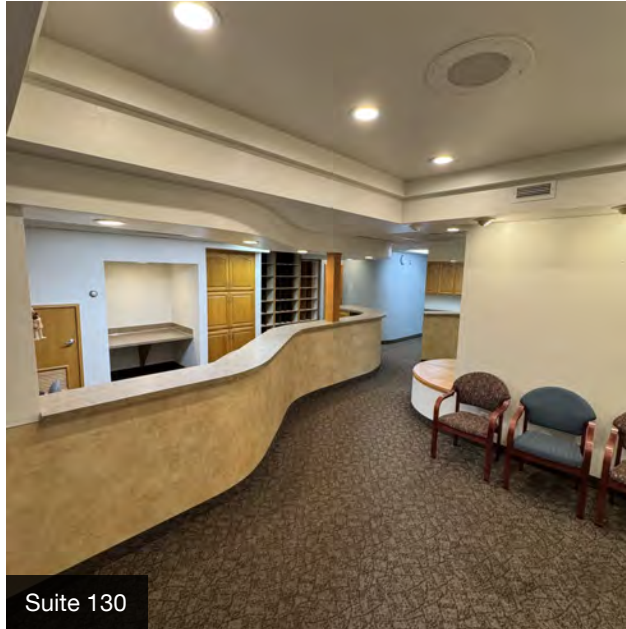
503.972.7295 | jbreeland@macadamforbes.com

**CHARLES HASELWOOD**

503.515.6959 | charles@macadamforbes.com



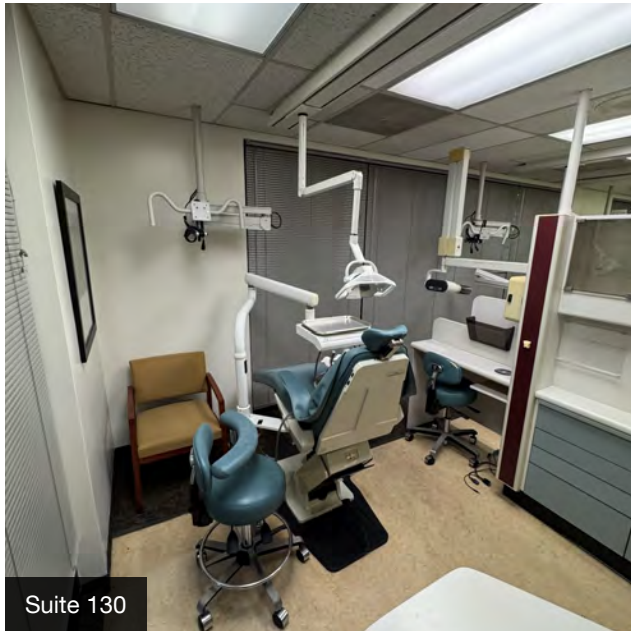
Suite 130



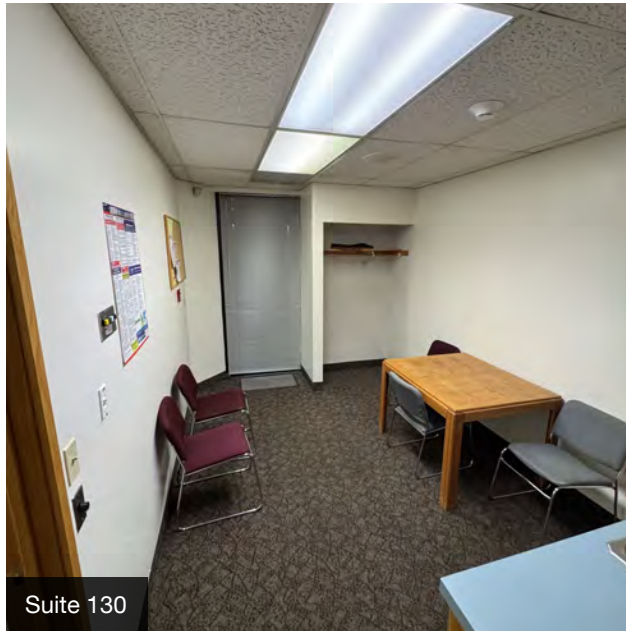
Suite 130



Add text here...



Suite 130



Suite 130



Suite 130

**JAKE BREELAND**

503.972.7295 | [jbreeland@macadamforbes.com](mailto:jbreeland@macadamforbes.com)

**CHARLES HASELWOOD**

503.515.6959 | [charles@macadamforbes.com](mailto:charles@macadamforbes.com)



**JAKE BREELAND**

503.972.7295 | jbreeland@macadamforbes.com

**CHARLES HASELWOOD**

503.515.6959 | charles@macadamforbes.com