



2020 BRUSH STREET, OAKLAND CA

±4,469 SF

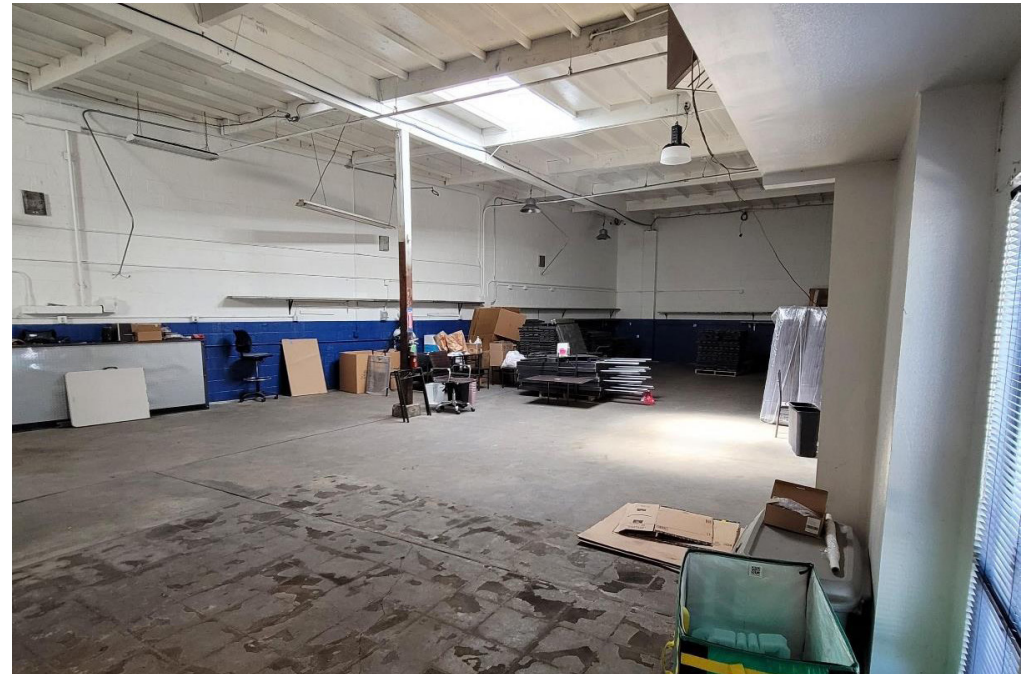
FREE-STANDING INDUSTRIAL/COMMERCIAL BUILDING FOR LEASE OR SALE

JACKSON HAGGLUND | DIRECTOR | 925.978.3142 | JACKSON.HAGGLUND@CUSHWAKE.COM | LIC #02138597

PROPERTY HIGHLIGHTS

2020 Brush Street is a free-standing warehouse spanning approximately ±4,469 SF strategically positioned in the center of Oakland between West Grand and Downtown.

- » Freeway Visibility
- » ± 5,154 SF Parcel
- » APN: 003-0037-005-03
- » Direct Highway Access
- » Half-Mile from BART
- » Digital Video Surveillance System
- » Seperate Front Office Entrance
- » High Ceilings with Skylights
- » One (1) Roll-Up Door with Drive-In Access
- » Clean Phase 1
- » Surrounded by Amenities such as Grocery Stores, Post Offices, Boutique Stores and Trendy Eateries
- » Zoning: CC-2 Community Commercial - 2 Zone
- » **Lease Rate: \$1.35 Gross**
- » ~~\$1.35/SF/NNN + \$0.28/SF OpEx~~
- » Sale Price: \$893,800.00



LOCATION HIGHLIGHTS



©2024 Cushman & Wakefield. All rights reserved. The information contained in this communication is strictly confidential. This information has been obtained from sources believed to be reliable but has not been verified. NO WARRANTY OR REPRESENTATION, EXPRESS OR IMPLIED, IS MADE AS TO THE CONDITION OF THE PROPERTY (OR PROPERTIES) REFERENCED HEREIN OR AS TO THE ACCURACY OR COMPLETENESS OF THE INFORMATION CONTAINED HEREIN, AND SAME IS SUBMITTED SUBJECT TO ERRORS, OMISSIONS, CHANGE OF PRICE, RENTAL OR OTHER CONDITIONS, WITHDRAWAL WITHOUT NOTICE, AND TO ANY SPECIAL LISTING CONDITIONS IMPOSED BY THE PROPERTY OWNER(S). ANY PROJECTIONS, OPINIONS OR ESTIMATES ARE SUBJECT TO UNCERTAINTY AND DO NOT SIGNIFY CURRENT OR FUTURE PROPERTY PERFORMANCE.