



**EXCEPTIONAL  
& CHARMING  
MOVE-IN READY  
SPACE!**



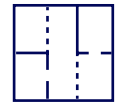
For lease

# Estate Office Park

## 5370 Estate Office Park Drive

### Memphis, TN 38118

Estate Office Park is situated in the heart of East Memphis, just south of the Poplar Avenue and Estate Drive intersection. With the property's desired location, Estate Office Park is convenient to retail centers, numerous restaurants, banks and neighborhoods.



Suite 2:  
773 SF available  
*(Perfect for 2-3  
person team!)*



Tranquil setting  
& copious  
landscaping



Two minutes  
from I-250/  
Poplar interchange



Surrounded by  
numerous  
amenities

Copyright © 2026 Colliers. Information herein has been obtained from sources deemed reliable, however its accuracy cannot be guaranteed. The user is required to conduct their own due diligence and verification.

Owned by:



Square Footage:

# 773

[VIEW ONLINE](#)

Contact us:

**Ron Riley**

Senior Vice President  
+1 901 312 5787  
Memphis, TN  
ron.riley@colliers.com

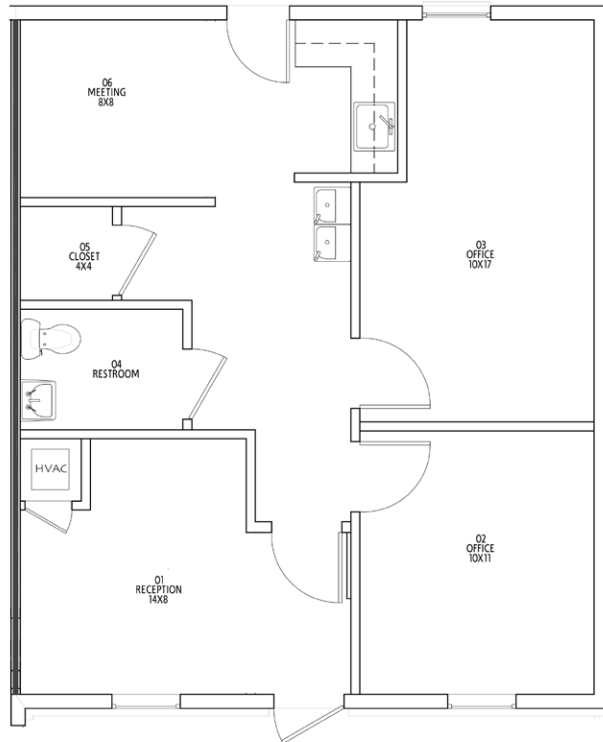
**Laura P. Taylor**

Vice President | Office  
+1 901 312 5772  
Memphis, TN  
laura.taylor@colliers.com

**Colliers**

6363 Poplar Avenue, Suite 400  
Memphis, TN 38119  
P: +1 901 312 4800  
www.colliers.com/memphis

# Suite 2 Profile



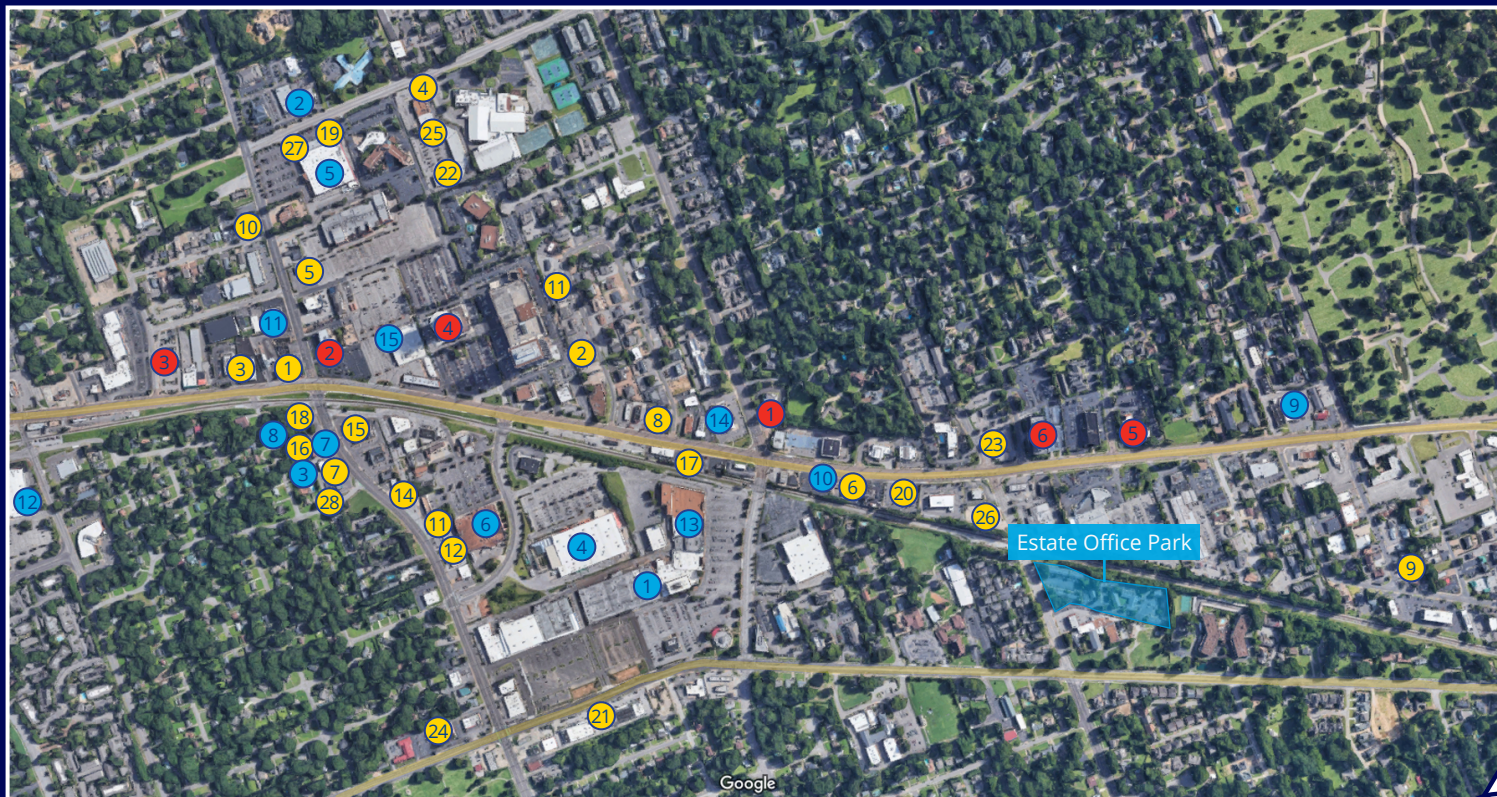
## Building Features:

- **Suite 2: 773 SF available for lease**
- MOVE-IN READY!
- Perfectly sized for a 2-3 person team in a well appointed location
- Private suites & front door parking
- Roving security
- Convenient entrance & exit points
- Tranquil park-like setting with mature trees & professional landscaping
- Two (2) minutes from I-240/Poplar interchange
- Close proximity to numerous upscale restaurants, banks, hotels and retail shopping centers

## Property Photos:



# Amenities



## **RESTAURANTS**

- ① Belmont Grill
- ② Brookhaven Grill
- ③ Chick-fil-A
- ④ Ciao Bella
- ⑤ City Silo Table + Pantry
- ⑥ Corky's Ribs & BBQ
- ⑦ Crumbl Cookies
- ⑧ Dunkin Donuts
- ⑨ Erling Jensen The Restaurant
- ⑩ Folk's Folly
- ⑪ Fox Ridge Pizza
- ⑫ Garibaldi's
- ⑬ Gibson's Donuts
- ⑭ Gus's Fried Chicken
- ⑮ Half Shell
- ⑯ Hen House
- ⑰ Jimmy John's
- ⑱ The Liquor Store
- ⑲ Lucchesi's
- ⑳ McDonald's

## **RESTAURANTS** *(continued)*

- ㉑ Memphis Pizza Cafe
- ㉒ Napa Cafe
- ㉓ Newk's Eatery
- ㉔ Patrick's
- ㉕ Rise Southern Biscuits
- ㉖ Taco Bell
- ㉗ Taziki's Mediterranean Cafe
- ㉘ Torchy's

## **RETAIL**

- ① Eastgate Shopping Center  
Burlington  
Dollar Tree  
Five Below  
Michaels  
Rack Room Shoes  
T.J. Maxx
- ② Garden Center
- ③ Grivet Outdoors
- ④ Home Depot

## **RETAIL** *(continued)*

- ⑤ Kroger (Mendenhall Road)
- ⑥ Kroger (Truse Parkway)
- ⑦ London & York
- ⑧ Mrs. Post
- ⑨ Office Depot
- ⑩ Outdoors, Inc.
- ⑪ Pickering Boxwood
- ⑫ Target
- ⑬ The Fresh Market
- ⑭ Walgreens
- ⑮ Whole Foods Market

## **BANKS**

- ① Bank3
- ② First Tennessee
- ③ Iberiabank
- ④ Independent Bank
- ⑤ Paragon Bank
- ⑥ Trustmark

▶ View Online  
colliers.com/memphis



## Contact



**Ron Riley**  
Senior Vice President  
Memphis, TN  
+1 901 312 5787  
ron.riley@colliers.com



**Laura P. Taylor**  
Vice President | Office  
Memphis, TN  
+1 901 312 5772  
laura.taylor@colliers.com

## Our mission

Maximize the potential of property and real assets to accelerate the success of our clients, our investors and our people.



6363 Poplar Avenue, Suite 400  
Memphis, TN 38119  
P: +1 901 375 4800  
www.colliers.com/memphis

This document has been prepared by Colliers for advertising and general information only. Colliers makes no guarantees, representations or warranties of any kind, expressed or implied, regarding the information including, but not limited to, warranties of content, accuracy and reliability. Any interested party should undertake their own inquiries as to the accuracy of the information. Colliers excludes unequivocally all inferred or implied terms, conditions and warranties arising out of this document and excludes all liability for loss and damages arising there from. This publication is the copyrighted property of Colliers and/or its licensor(s). ©2026. All rights reserved.