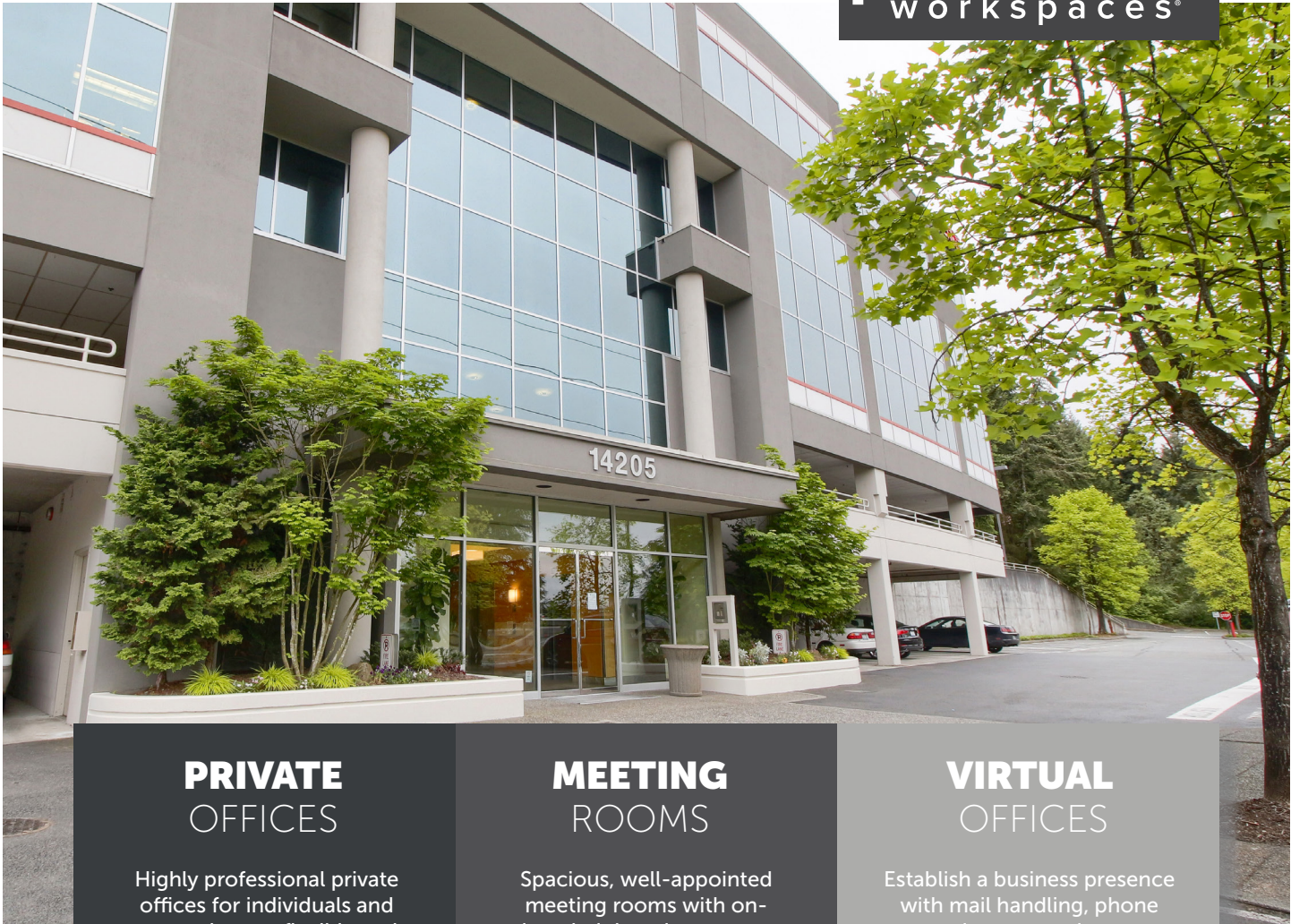


Eastside Office Center

14205 S.E. 36th Street, Suite 100, Bellevue, WA 98006



PRIVATE OFFICES

Highly professional private offices for individuals and teams that are flexible and scaled for growth.

MEETING ROOMS

Spacious, well-appointed meeting rooms with on-site administrative support. Available for an hour, day or longer.

VIRTUAL OFFICES

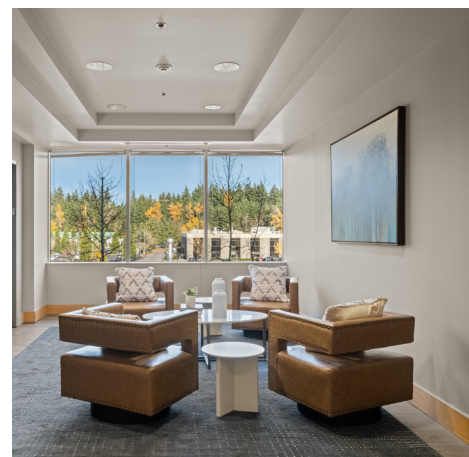
Establish a business presence with mail handling, phone answering or meeting room time.

ABOUT THIS LOCATION

Enjoy vast mountain and city views from the comfort of your well-appointed office! Bellevue is a major business hub, known for its business-friendly environment and close proximity to Seattle. It's also home to major employers including Amazon, Microsoft and T-Mobile. This location is an ideal setting for a growing business seeking a high-professional atmosphere in an accessible location.

CONTACT US

Let's touch base! Contact the on-site General Manager at 425-641-4079 or BELmanager@premierworkspaces.com to schedule a tour.



Eastside Office Center

14205 S.E. 36th Street, Suite 100, Bellevue, WA 98006



PREMIER AMENITIES

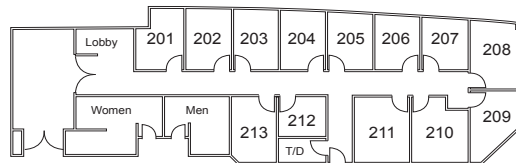
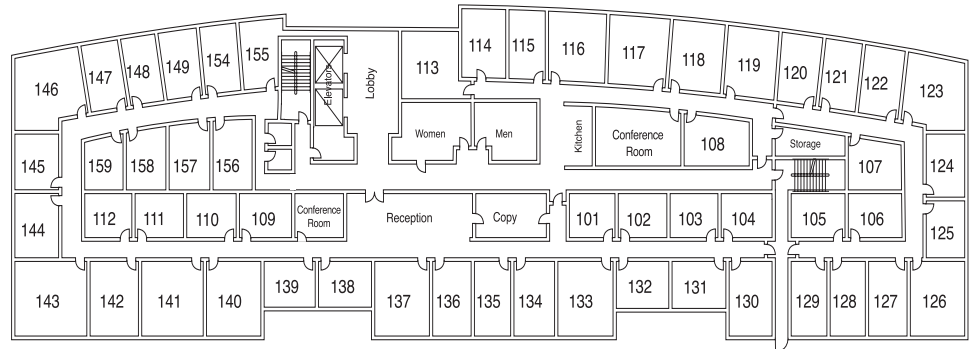
Our private suites can be easily customized to fit your desired aesthetic and brand.

- Private Offices
- Team Rooms
- High Speed Internet
- Telephone Answering
- Mail Collection
- Equipped Kitchen
- Day Offices
- Meeting Rooms
- Daily Janitorial
- Furnished or Unfurnished

PREMIER DIFFERENCE

We've been perfecting the professional workspace for over 21 years.

- Highly-Professional Atmosphere
- On-Site Manager & Support Staff
- Scalable Solutions for Individuals and Teams
- On-Site Billing
- 90+ Locations Nationwide



NEARBY AMENITIES

Bellevue, Washington is conveniently located across Lake Washington from Greater Seattle. With beautiful views of Mt. Rainier, it offers world-class recreation as well as shopping, dining, arts, and culture.

Nearby Amenities:

- Eastgate Park
- Factoria Mall
- Robinswood Park
- Sunset Ravine Park
- T-Mobile Headquarters

Nearby Transit:

- Freeways – Easy access to I-90 and I-405
- King County Metro – stop in front of the building
- Seattle Tacoma International Airport (SEA)