



Di Giorgio Rd

For Sale or Lease
+/- 3.9 AC of M-2 Medium Industrial
Zoned Paved & Secured Yard

8860 Di Giorgio Rd | Lamont, CA

Contact Us:

Stephen J. Haupt, SIOR
Senior Vice President | Principal
License No. 00838505
+1 661 631 3812
stephen.haupt@colliers.com

Marco Petrini
Vice President
License No. 02167974
+1 661 631 3826
marco.petrini@colliers.com

Colliers International
10000 Stockdale Hwy, Suite 102
Bakersfield, CA 93311
+1 661 631 3800
www.colliers.com/bakersfield

Property Overview

8860 Di Giorgio Road is strategically located just south of Lamont in Kern County, offering a fully paved yard ideal for fleet storage, truck parking, contractor yards, equipment storage, and other industrial outdoor storage (IOS) uses. With convenient access to Highway 58 and Highway 99, the property provides efficient connectivity throughout California and benefits from its location within the greater Bakersfield industrial market, a hub for agriculture, energy, and distribution.

Sales Price:

\$1,000,000

Lease Rate:

Call Broker for details

Available:

+/- 3.9 AC of M-2 Medium Industrial Zoned Land in Kern county.
APNS: 188-180-13, 24, 25

Property Highlights:

- Fully paved and functional yard area
- Ideal for fleet parking, equipment storage, and industrial outdoor storage uses
- Excellent access to Highway 58 and Highway 99
- Located within Kern County's major agriculture, energy, and logistics corridor
- Convenient proximity to Bakersfield and surrounding industrial users
- This property presents a rare opportunity to secure a well-located, paved industrial yard in one of Central California's most active transportation and industrial markets.



Demographics



Population
 1 Mile: 10,683
 3 Mile: 16,557
 5 Mile: 21,636



Median Age
 1 Mile: 29.5
 3 Mile: 29.2
 5 Mile: 29.5



Households
 1 Mile: 2,659
 3 Mile: 4,388
 5 Mile: 5,787



Average HH Income
 1 Mile: \$47,902
 3 Mile: \$50,621
 5 Mile: \$6,072



Employees
 1 Mile: 1,478
 3 Mile: 2,782
 5 Mile: 4,409



Businesses
 1 Mile: 191
 3 Mile: 305
 5 Mile: 384



KERN COUNTY

At A

GLANCE

#2 LARGEST ECONOMY
 IN THE SAN JOAQUIN VALLEY

#1 in Agricultural Production Nationwide



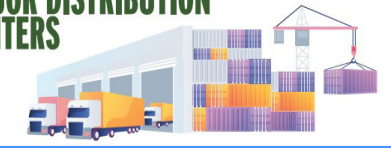
#3 in Economic Diversity Nationwide



#4 in STEM Jobs Nationwide



OVER 50 MAJOR DISTRIBUTION CENTERS



THE ENERGY CAPITAL OF CALIFORNIA
 Largest Provider of Oil & Renewable Energy in the State

75%



60%



#1 Largest Wind Farm in the U.S.

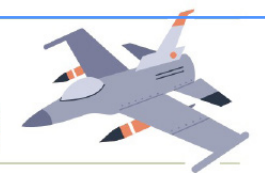


#1 Largest Battery Energy Storage System in the World



#14 Oil-Producing County in the Nation

OVER 50 WORLD TECH "FIRSTS"
 NAVAL AIR WEAPONS STATION CHINA LAKE



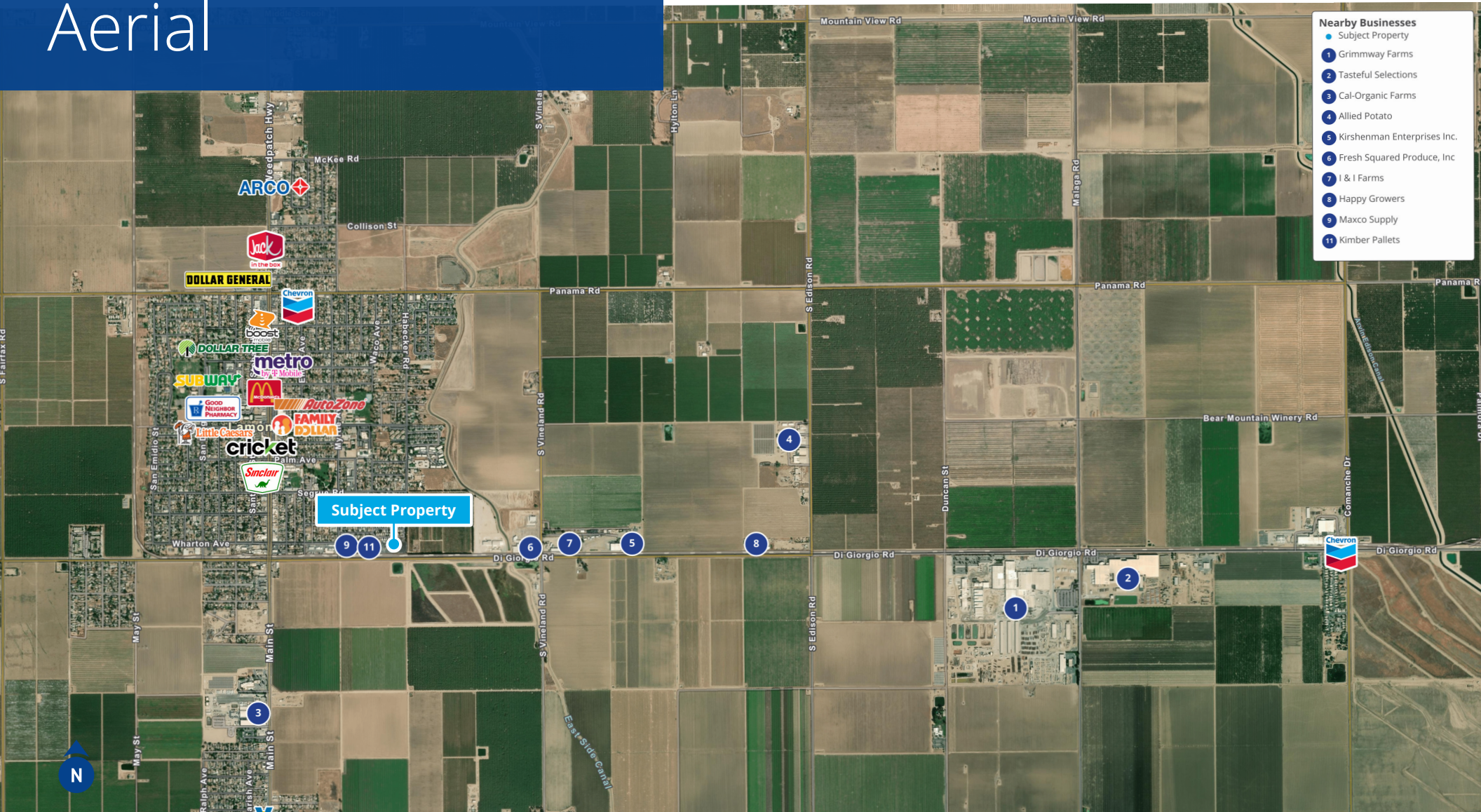
1ST COMMERCIAL SPACE PORT IN U.S.
 MOJAVE AIR & SPACE PORT AT RUTAN FIELD



1ST SPACE SHUTTLE LANDING
 EDWARDS AIR FORCE BASE



Aerial



Nearby Businesses

- Subject Property
- 1 Grimmway Farms
- 2 Tasteful Selections
- 3 Cal-Organic Farms
- 4 Allied Potato
- 5 Kirshenman Enterprises Inc.
- 6 Fresh Squared Produce, Inc
- 7 I & I Farms
- 8 Happy Growers
- 9 Maxco Supply
- 10 Kimber Pallets

Contact Us:

Stephen J. Haupt, SIOR

Senior Vice President | Principal
License No. 00838505
+1 661 631 3812
stephen.haupt@colliers.com

Marco Petrini

Vice President
License No. 02167974
+1 661 631 3826
marco.petrini@colliers.com

Colliers International

10000 Stockdale Hwy, Suite 102
Bakersfield, CA 93311
+1 661 631 3800
www.colliers.com/bakersfield