

US 29 Business  
Parcel ID # 152631  
Reidsville, NC 27320



8.45 +/- Acres



(336) 379-8771 | [www.bipinc.com](http://www.bipinc.com)

**Contact:**

Ryan Eversole, Broker  
[reversole@bipinc.com](mailto:reversole@bipinc.com)  
P: 336-541-5510  
C: 336-420-8002



Bill Strickland  
Broker, CCIM, MBA  
[bstrickland@bipinc.com](mailto:bstrickland@bipinc.com)  
P: 336-369-5974



**FOR SALE- Land**  
8.45 +/- Acres  
\$325,000

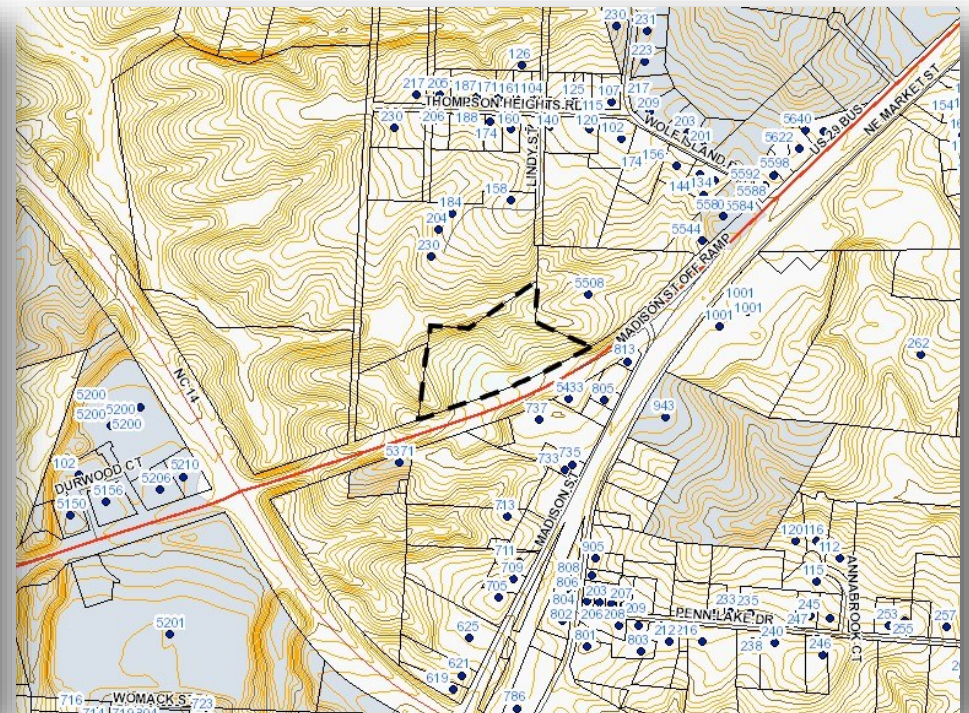
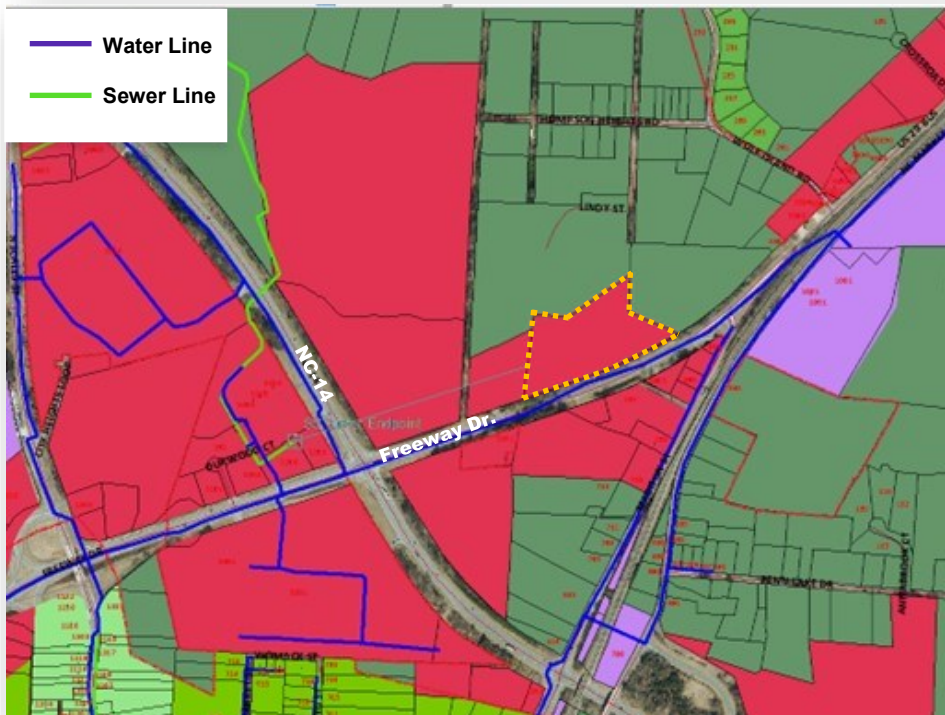
# US Hwy 29 Business Reidsville, NC 27320

## Property Summary

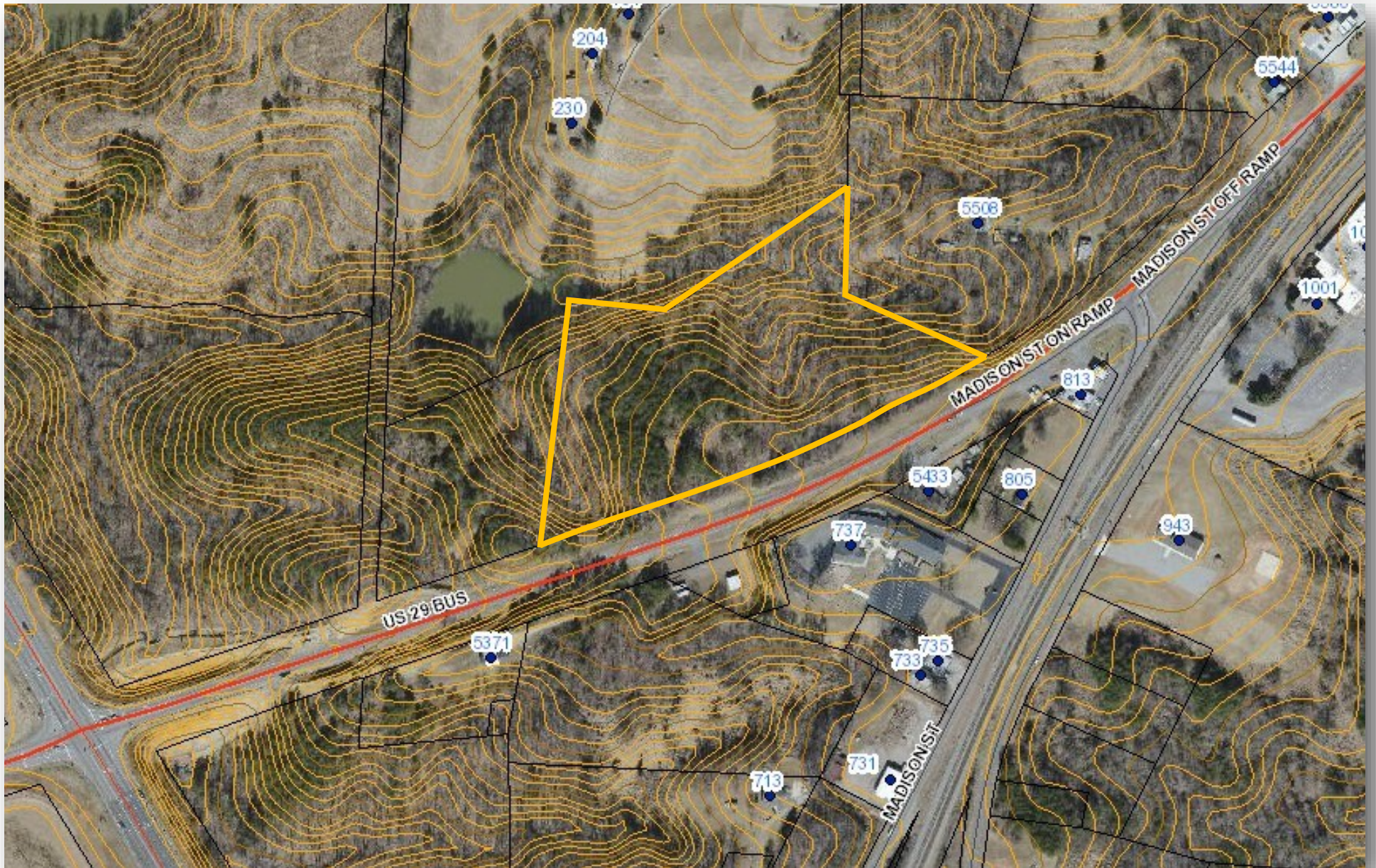
Approximately 1,000 feet road frontage on Hwy 29 Business on 8.45 acre parcel. Mostly level topography near the road and slopes down at the back of the lot. Sewer access is located approximately 1,500 feet near the intersection of NC-14. Water line runs down Freeway Drive in front of the property.

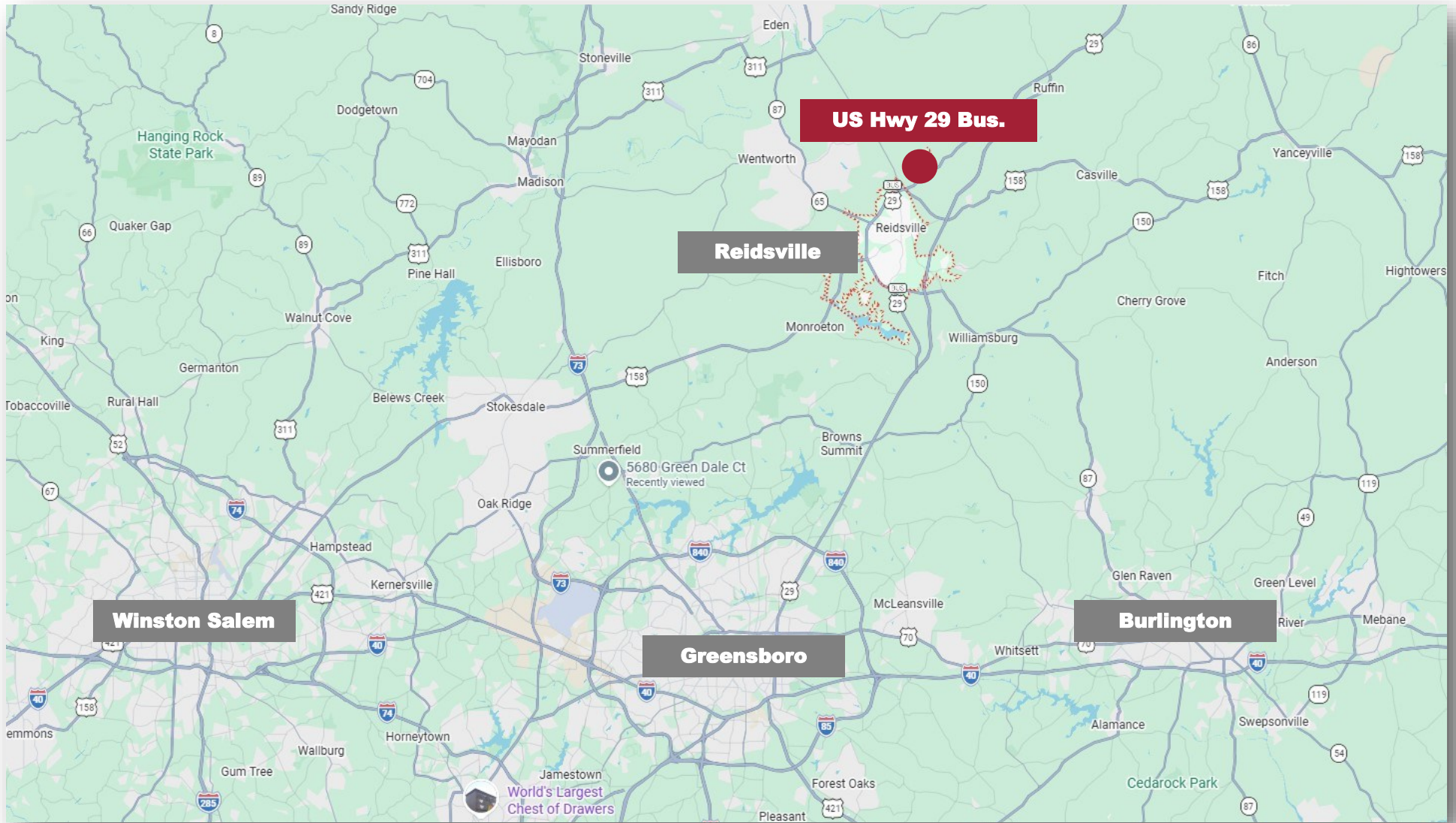
## PROPERTY DETAILS

- Lot Size: 8.45 +/- acres
- Located near the intersection of US Hwy 29 Business and NC-14
- Zoning: HB (Highway Business)
- Approximately 1,000 feet road frontage
- Topography: Level near road and slopes at back
- Usage: Industrial, Office, Retail, Goods and Services
- Sales Price: \$325,000



# US Hwy 29 Business Topography





1007 Battleground Avenue, Suite 401, Greensboro NC 27408

The statements and figures herein while not guaranteed are secured from sources believed to be authoritative. This offering is subject to change of price, prior lease or sale and or withdrawal without notice. Prospects should verify all information.