

HOSPITAL ADJACENT RETAIL

FOR LEASE 3900 E. HARRY ST., WICHITA, KS 67218

LEASE RATE	\$10.00 SF/YR (NNN)
ESTIMATED NNN	\$2.00/SF
AVAILABLE SF	541 - 6,892 SF
BUILDING SIZE	10,094 SF
LOT SIZE	0.65 Acres
ZONING	Limited Commercial

PROPERTY HIGHLIGHTS

- Located in front of Ascension Via Christi St. Joseph Hospital.
- Convenient spot for both shoppers and business professionals.
- Tenant improvements available.
- Competitive lease rate.
- Many flexible square foot options available.

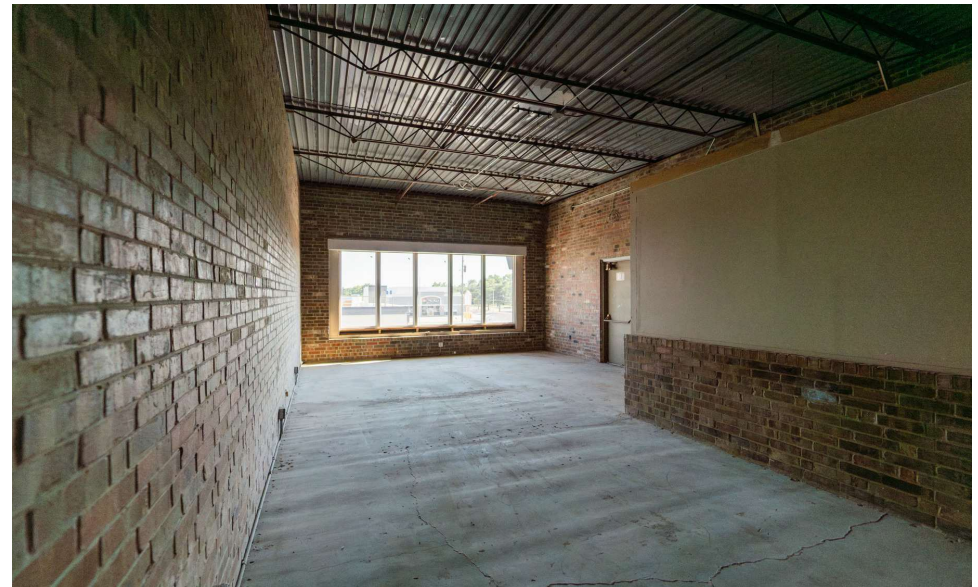
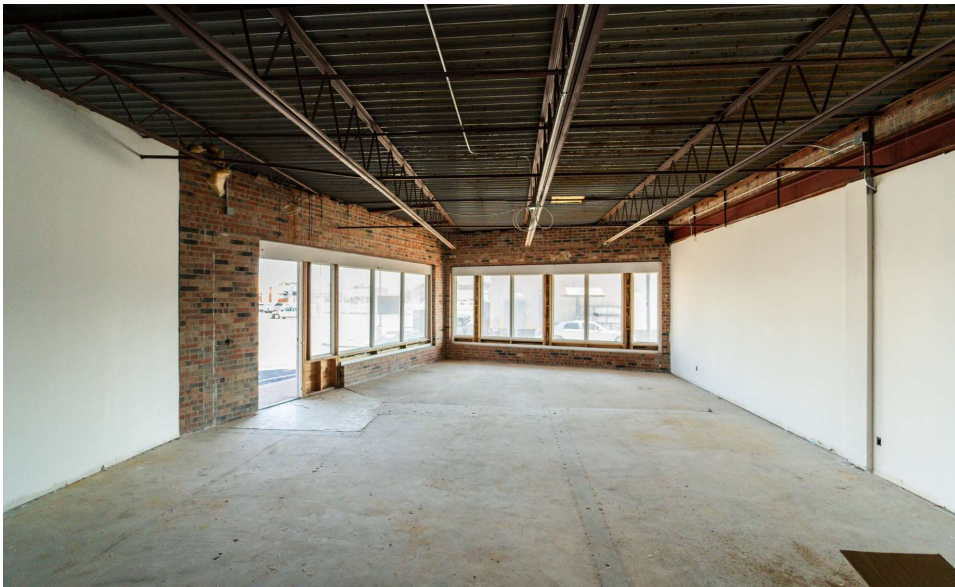
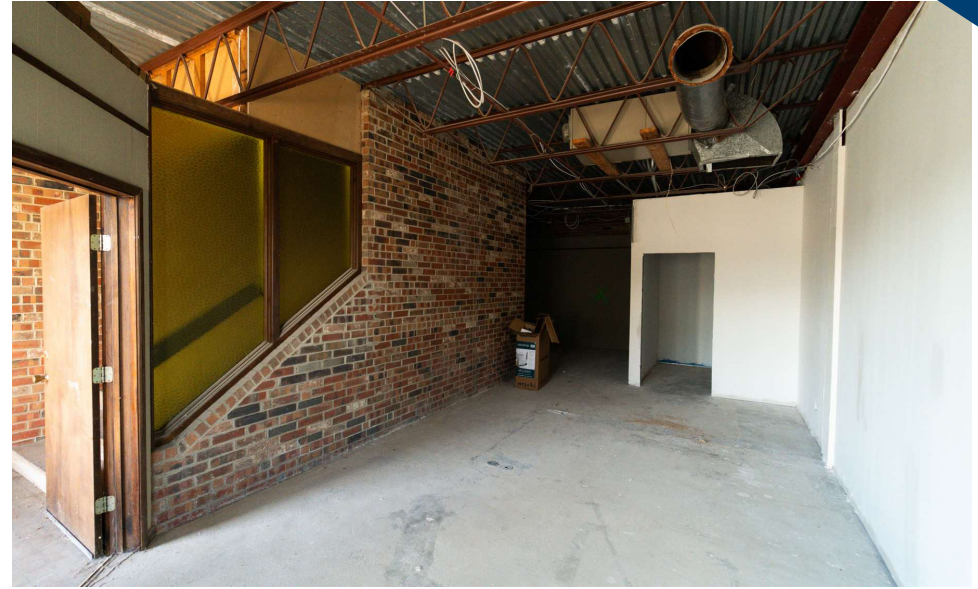
DEMOGRAPHICS	1 MILE	3 MILES	5 MILES
Population	15,049	95,001	206,077
Avg. HH Income	\$52,003	\$62,915	\$65,049
Median Age	39	37	38
TRAFFIC COUNTS			
Harry & Hillside	25,391 VPD		
Harry & Oliver	31,808 VPD		

HOSPITAL ADJACENT RETAIL

FOR LEASE 3900 E. HARRY ST., WICHITA, KS 67218

WEIGAND
COMMERCIAL

INTERIOR PHOTOS



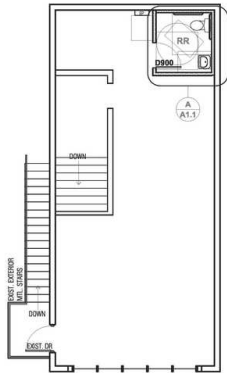
Brandon Tidemann | 316.292.3966 | brandont@weigand.com

Weigand Real Estate - Commercial
150 N. Market St., Wichita, KS 67202
Weigand.com

HOSPITAL ADJACENT RETAIL

FOR LEASE 3900 E. HARRY ST., WICHITA, KS 67218

FLOOR PLAN

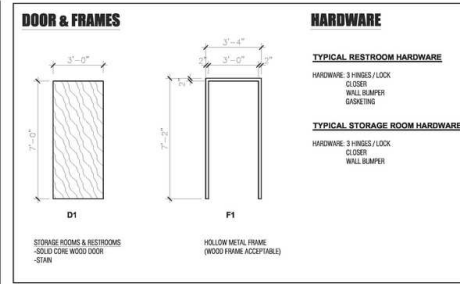
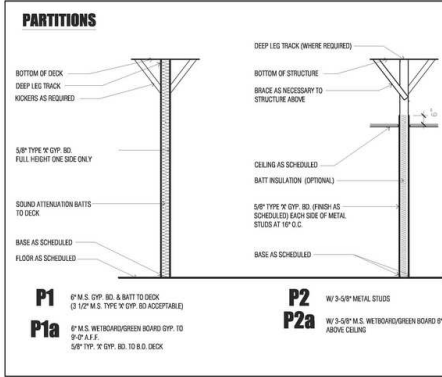


Enlarged R.R. Plan 1/4" = 1'-0" **A** R.R. Elev. 1/4" = 1'-0" **1** R.R. Elev. 1/4" = 1'-0" **2** R.R. Elev. 1/4" = 1'-0" **3** R.R. Elev. 1/4" = 1'-0" **4**

ADA NOTES:
 REFERENCE SHEET A0.1 FOR ADA MINIMUM REQUIREMENTS PER 2010 ADA GUIDELINES.
 ACC TO PROVIDE BLOCKING AS REQUIRED FOR GRAB BARS ANY OTHER EQUIPMENT.

TOILET ACCESSORIES		SUPPLIER/INSTALLER	
ITEM	DESCRIPTION		
TA-1	SURFACE MOUNTED PAPER TOWEL DISPENSER	G.C.	
TA-2	GRAB BAR	G.C.	
TA-3	GRAB BAR	G.C.	
TA-4	SURFACE MOUNTED SINGLE TOILET TISSUE DISP.	G.C.	
TA-5	MIRROR	G.C.	
TA-6	SOAP DISPENSER	G.C.	
TA-7	Sanitary napkin dispenser	G.C.	

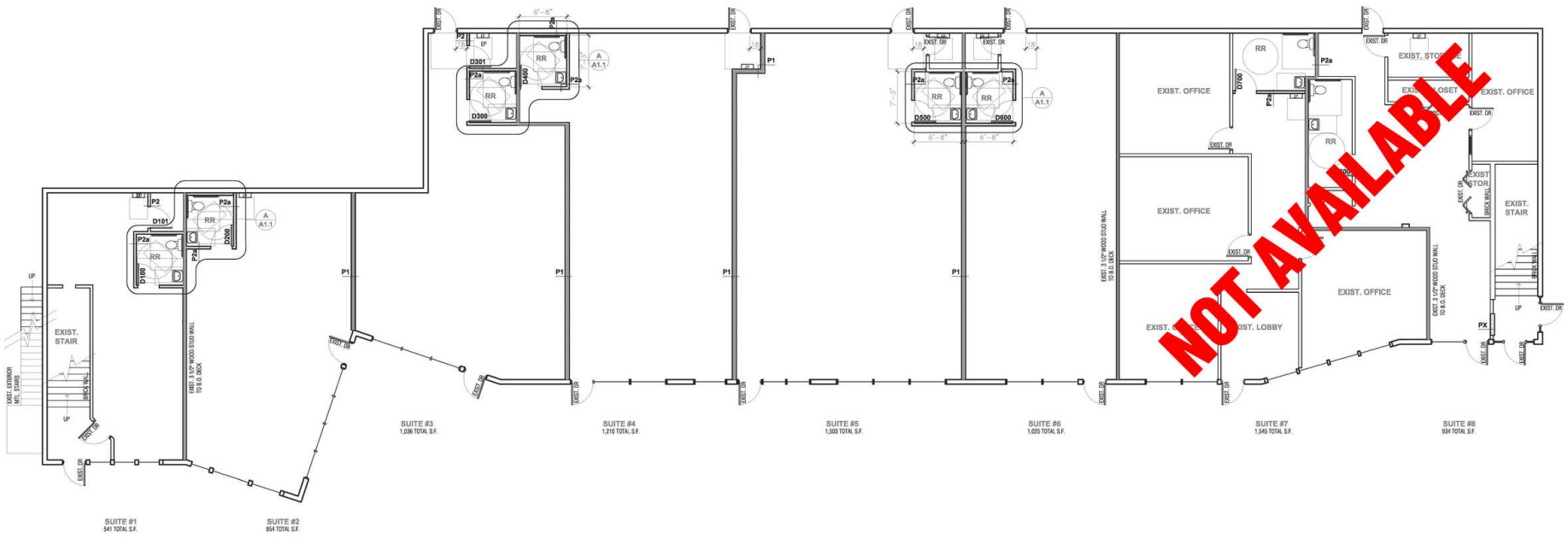
HARDWARE	
RESTROOM (TYPICAL)	STORAGE
3 HINGES	1 DOOR CLOSER
1 FILL	1 WALL BUMPER
1 LOCK SET	1 GASKETING
	3 HINGES
	1 DOOR CLOSER
	1 FILL
	1 WALL BUMPER
	1 LOCK SET
	1 GASKETING



NOT AVAILABLE

Suite #9
West Upper Level Floor Plan 1/8" = 1'-0"

Suite #10
East Upper Level Floor Plan 1/8" = 1'-0"



NOT AVAILABLE

HOSPITAL ADJACENT RETAIL

FOR LEASE 3900 E. HARRY ST., WICHITA, KS 67218

AERIAL VIEW

