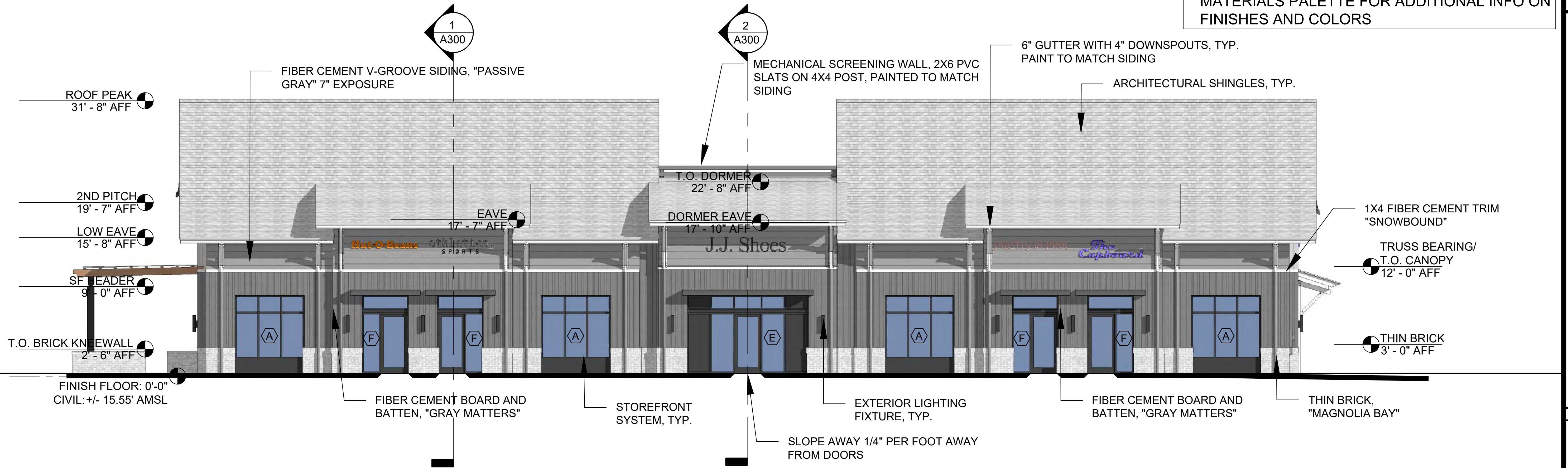


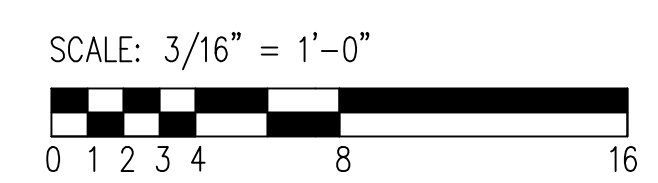
**1 NORTH ELEVATION (FRONT) FACING PARKING LOT AND BLDG "D"**  
 SCALE: 3/16" = 1'-0"

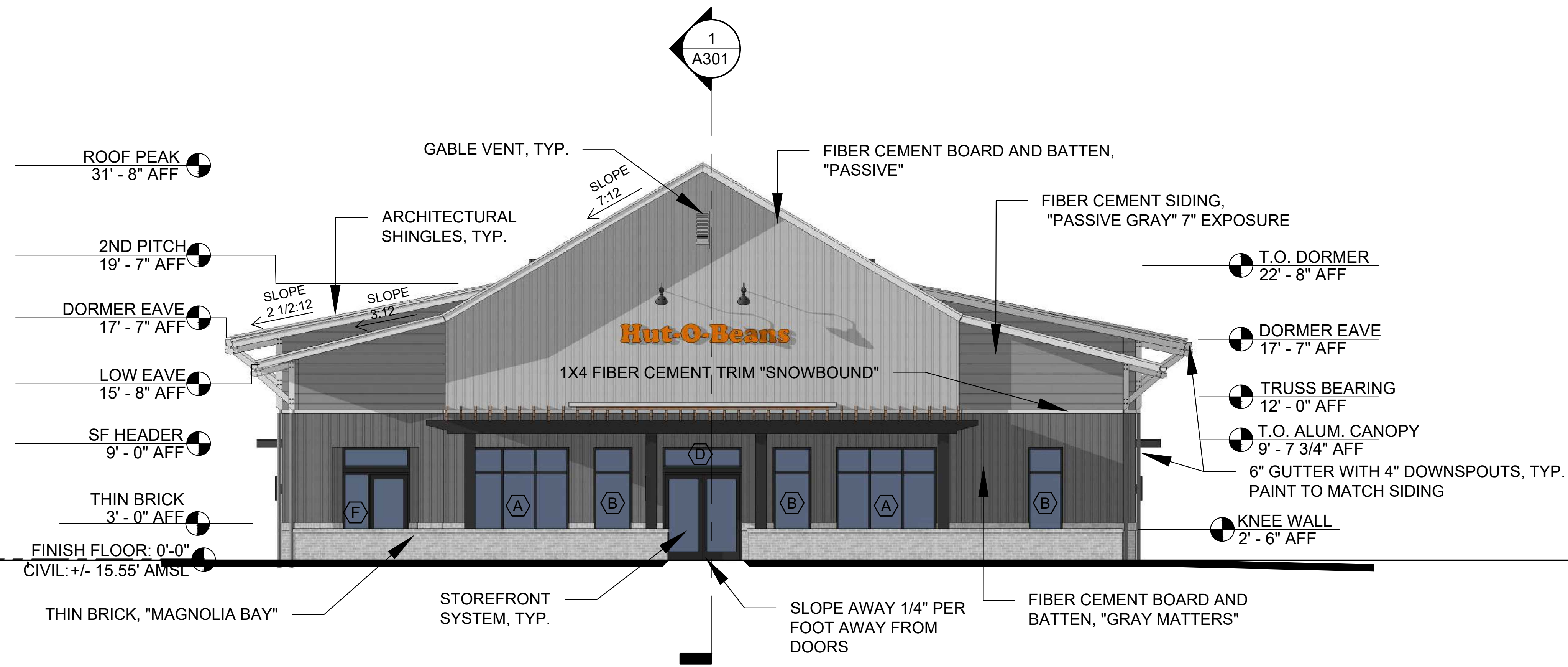
NOTE: SIGNAGE BY OTHERS

SEE TOMP FINAL DRB APPROVED EXTERIOR MATERIALS PALETTE FOR ADDITIONAL INFO ON FINISHES AND COLORS



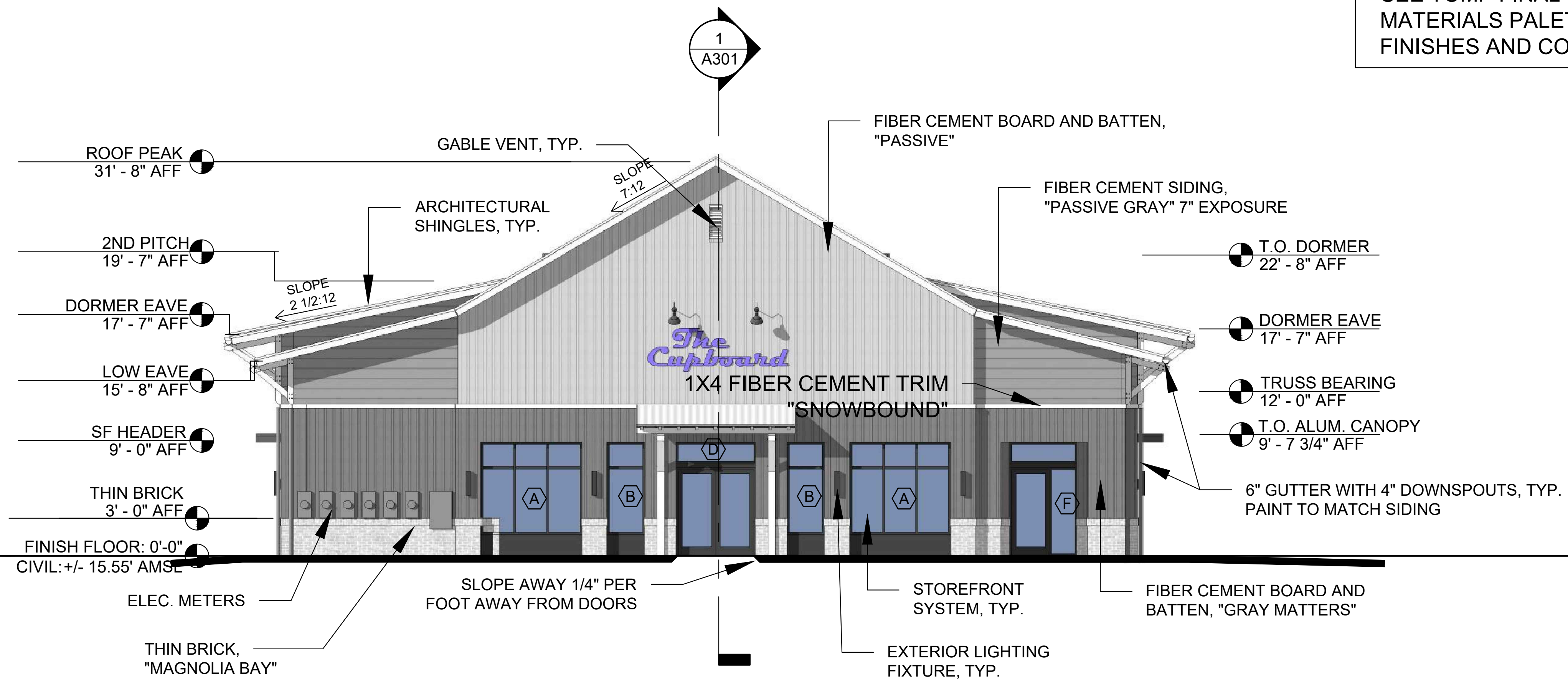
**2 SOUTH ELEVATION FACING HWY 17**  
 SCALE: 3/16" = 1'-0"





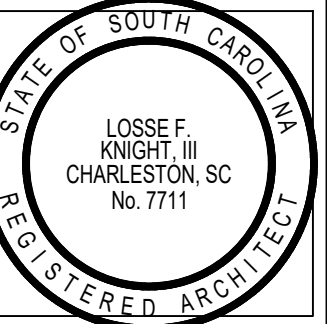
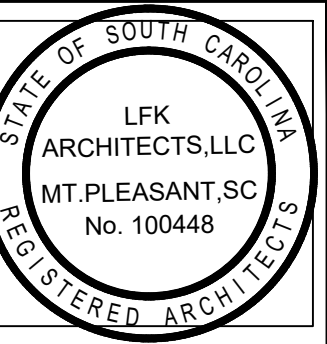
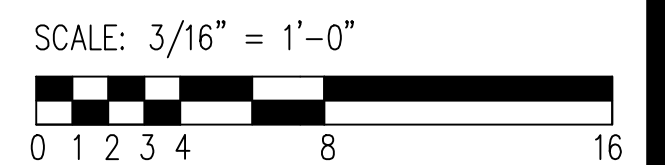
**1 WEST ELEVATION- SIDE FACING PATIO AND PARKING LOT**  
SCALE: 3/16" = 1'-0"

NOTE: SIGNAGE BY OTHERS



**2 EAST ELEVATION (SIDE) FACING ENTRY DRIVE AND BLDG "B"**  
SCALE: 3/16" = 1'-0"

SEE TOMP FINAL DRB APPROVED EXTERIOR MATERIALS PALETTE FOR ADDITIONAL INFO ON FINISHES AND COLORS



**LFK ARCHITECTS**  
Land Planning + Feasibility Studies  
Commercial + Residential Design  
www.lfkarchitect.com  
LFK ARCHITECTS, LLC  
886 JOHNNIE DODDS BLVD  
SUITE 200  
MOUNT PLEASANT, SC 29464  
LOSSE F. KNIGHT III, AIA, NCARB  
losse@lfkarchitect.com  
phone: 843-330-8940

JOB NUMBER: 000	DRAWN: AJR	CHECKED: LFK
-----------------	------------	--------------

REVISION NOTES:

HIGHWAY 17 RETAIL VILLAGE BUILDING "B"  
TMS: 559-13-00-041  
MOUNT PLEASANT, SC  
EAST & WEST BUILDING ELEVATIONS

SHEET NUMBER & TITLE:  
**A201**  
PERMIT / CONSTRUCTION DRAWINGS  
02.27.2026