

AVAILABLE

The
TEMPLES
Company

(912) 538-7000

49± Acres - Lyons, GA

US 280 and Bulldog Road
Lyons, GA 30436

(Latitude, Longitude)
(32.20168, -82.32958)

AVAILABLE:

49± acres at \$49,000.00 per acre

Will Subdivide (see Page 2 for subdivision pricing)

- Near County High School
- Frontage on US 280
- Multi-Use Tract
- Across from Courthouse Complex



DEMOGRAPHICS:

	5 miles	10 miles	15 miles
2025 Population:	14,774	27,174	59,292
2020 Households:	5,859	10,791	21,919
2020 Median HH Income:	\$64,976	\$73,607	\$71,769

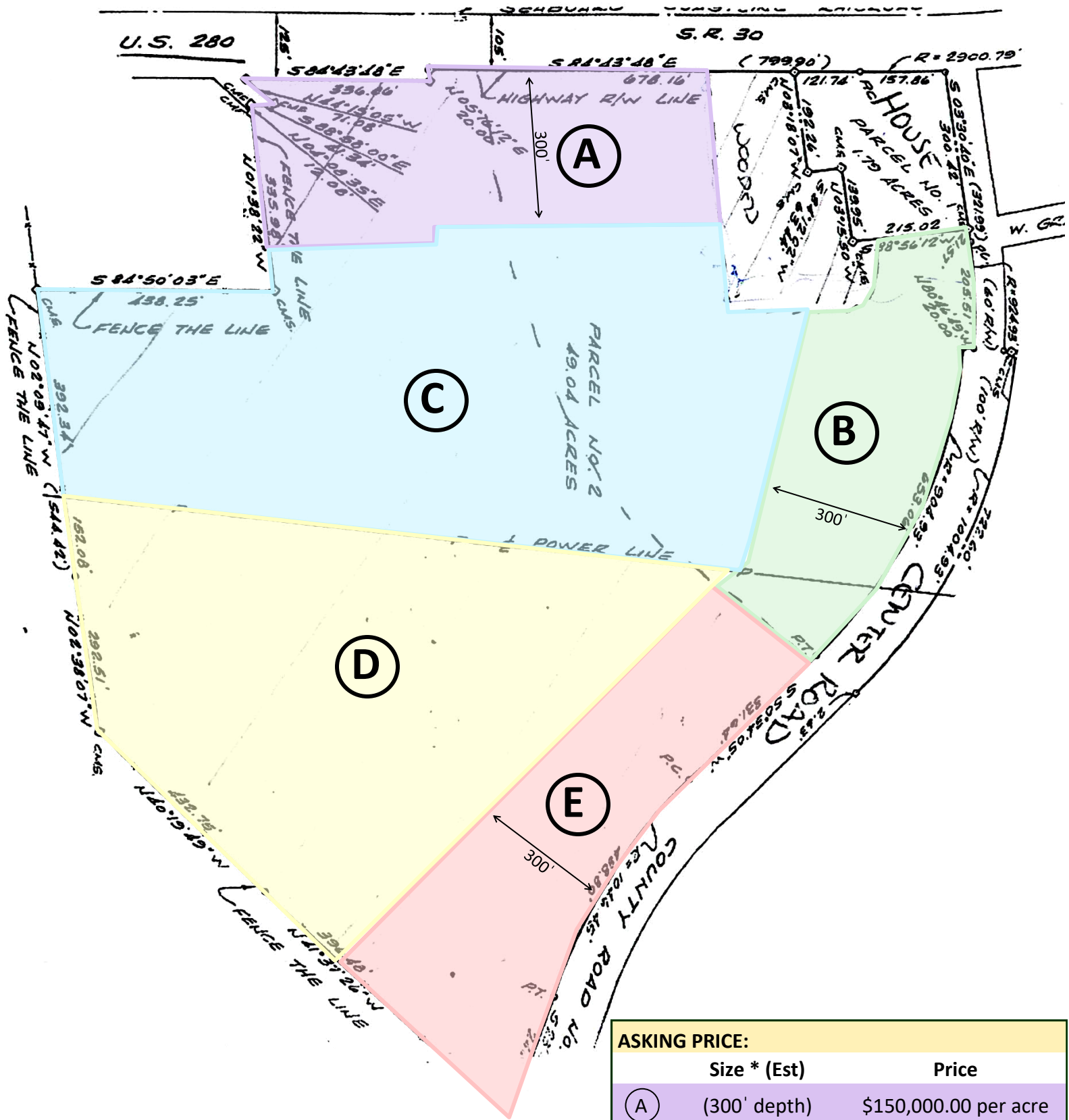
TRAFFIC COUNTS:

Street:	Daily Count
US 280:	15,500
Bulldog Road:	4,310

Please contact our office for additional information.

The Temples Company
 PO Box 405
 301 Mosley Street (30474)
 Vidalia, GA 30475
 (912) 538-7000
www.thetemplescompany.com

* This information has been obtained from sources believed reliable. While we do not doubt its accuracy, we have not verified it and make no guarantee or representation about the information. It is your responsibility to independently confirm its accuracy and completeness. 2518NOV



ASKING PRICE:		
	Size * (Est)	Price
(A)	(300' depth)	\$150,000.00 per acre
(B)	(300' depth)	\$65,000.00 per acre
(C)		\$45,000.00 per acre
(D)		\$25,000.00 per acre
(E)	(300' depth)	\$45,000.00 per acre

*Subject to survey