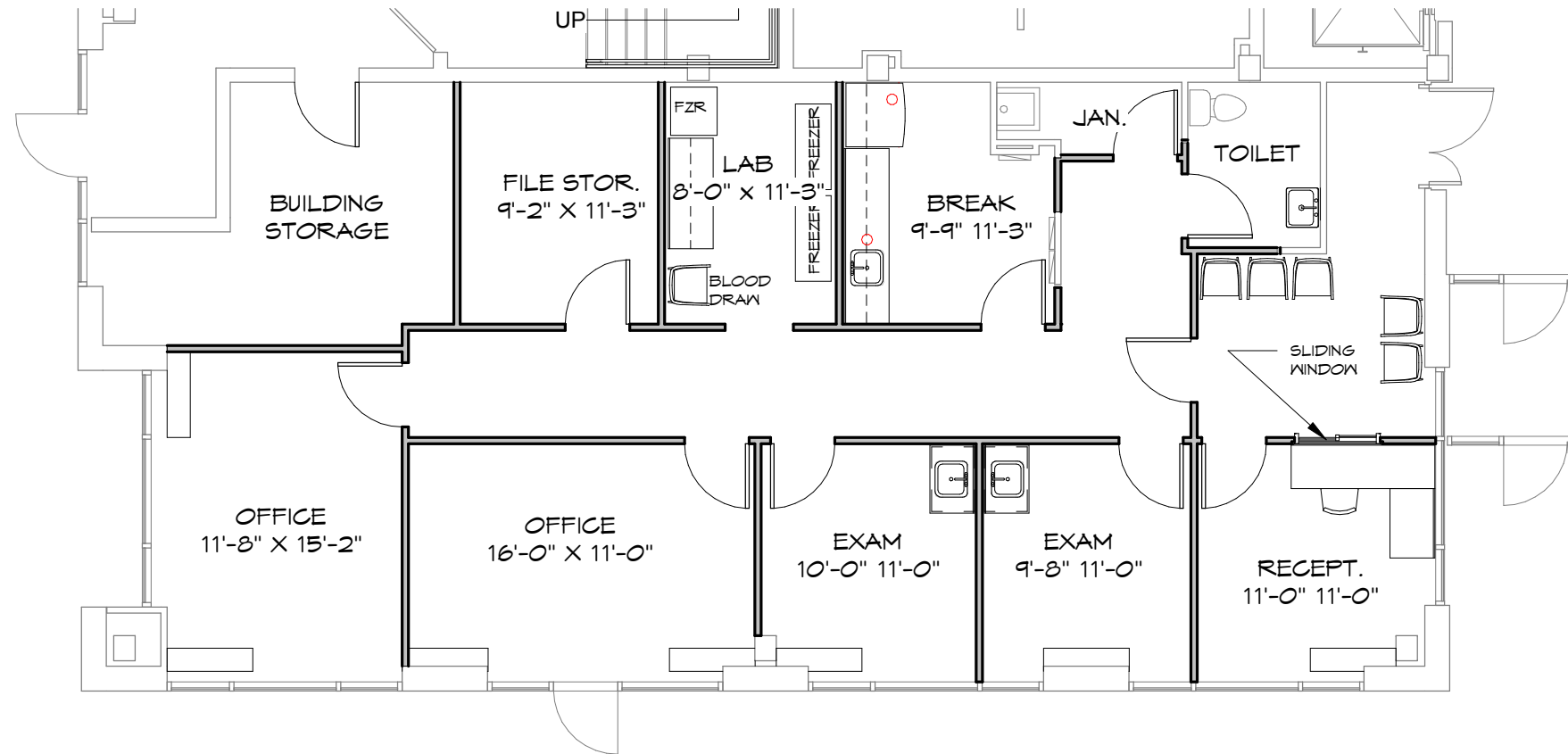

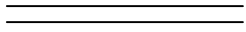
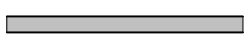

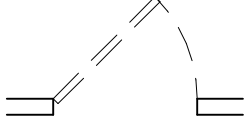
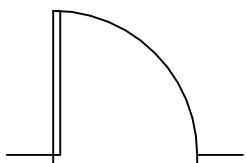


Exhibit A



KEY LEGEND

-  EXIST. WALL TO BE DEMOLISHED
-  EXIST. WALL TO REMAIN
-  PROPOSED NEW WALL OR INFILL
-  EXIST. DOOR TO REMAIN
-  EXIST. DOOR, FRAME AND HARDWARE TO BE DEMOLISHED
-  NEW DOOR 3'-0" X 7'-0" U.N.O.



PROPOSED FLOOR PLAN

1/8"=1'-0"

1st Floor Key Plan

1/64"=1'-0"



516 N. Charles Street, Suite 500
Baltimore, Maryland 21201
p: 410.752.2700
f: 410.752.2752
www.heathdesigngroup.com

PROJECT TITLE:

SHT. TITLE:

DATE:

2/22/2021

SCALE:

As indicated

PROJ. #:

Project Number

Dr. Banks Offices
7404 Executive Place
Lanham, MD 20706

Proposed Floor Plan - 1st Floor

SK-2