

MEDICAL OFFICE FOR LEASE

333
S. 10TH STREET
TAFT, CA 93268

PROPERTY HIGHLIGHTS

- Centrally located in Taft's main commercial and residential corridor
- Convenient access for patients with ample parking onsite
- Minutes from Taft's hospital, urgent care centers, and major retail amenities
- High visibility along a well-traveled street, enhancing brand presence
- Welcoming reception and spacious waiting area
- Multiple exam rooms with sinks and cabinetry
- Private physician offices and consultation rooms
- Breakroom/staff lounge
- Flexible floor plan adaptable for various specialties

Available Space :

±5,466 SF

Asking Rent:

\$1.50/SF (Modified Gross)

For more information, please contact:

Alex Balfour, SIOR
Executive Director
+1 661 304 2521
alex.balfour@cushwake.com
LIC. 01709847

Scott Salters
Senior Director
+1 661 204 6725
scott.salters@cushwake.com
LIC. 02068579

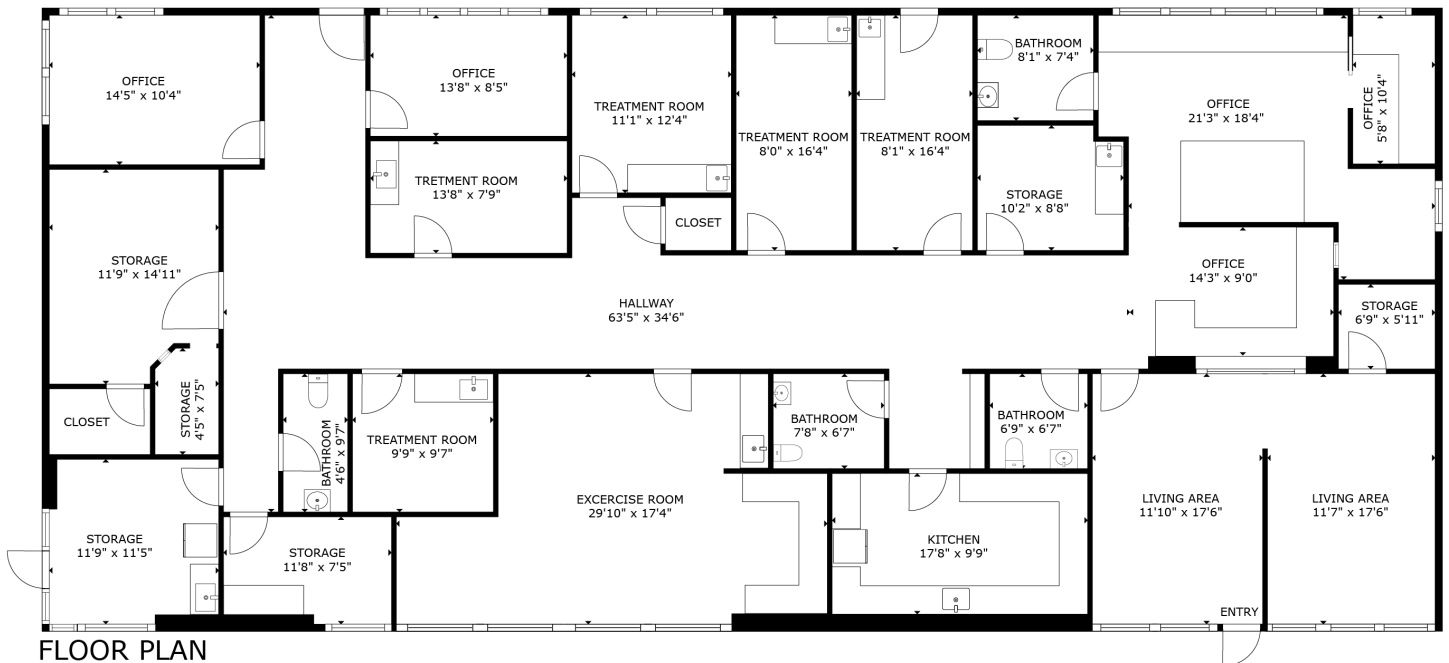
5060 California Avenue, Suite 1000
Bakersfield, CA 93309
PH: +1 661 327 2263
FX: +1 661 633 3801
cushmanwakefield.com

FLOOR PLAN

333 S. 10th Street

Available : ±5,466 SF

S10TH STREET



FLOOR PLAN

PARKING LOT



For more information, please contact:

Alex Balfour, SIOR
Executive Director
+1 661 304 2521
alex.balfour@cushwake.com
LIC. 01709847

Scott Salters
Senior Director
+1 661 204 6725
scott.salters@cushwake.com
LIC. 02068579

5060 California Avenue, Suite 1000
Bakersfield, CA 93309
PH: +1 661 327 2263
FX: +1 661 633 3801
cushmanwakefield.com



LOCATION

333 S. 10th Street





For more information, please contact:

Alex Balfour, SIOR

Executive Director
+1 661 304 2521
alex.balfour@cushwake.com
LIC. 01709847

Scott Salters

Senior Director
+1 661 204 6725
scott.salters@cushwake.com
LIC. 02068579

5060 California Avenue, Suite 1000
Bakersfield, CA 93309
PH: +1 661 327 2263
FX: +1 661 633 3801
cushmanwakefield.com



©2025 Cushman & Wakefield. All rights reserved. The information contained in this communication is strictly confidential. This information has been obtained from sources believed to be reliable but has not been verified. NO WARRANTY OR REPRESENTATION, EXPRESS OR IMPLIED, IS MADE AS TO THE CONDITION OF THE PROPERTY (OR PROPERTIES) REFERENCED HEREIN OR AS TO THE ACCURACY OR COMPLETENESS OF THE INFORMATION CONTAINED HEREIN, AND SAME IS SUBMITTED SUBJECT TO ERRORS, OMISSIONS, CHANGE OF PRICE, RENTAL OR OTHER CONDITIONS, WITHDRAWAL WITHOUT NOTICE, AND TO ANY SPECIAL LISTING CONDITIONS IMPOSED BY THE PROPERTY OWNER(S). ANY PROJECTIONS, OPINIONS OR ESTIMATES ARE SUBJECT TO UNCERTAINTY AND DO NOT SIGNIFY CURRENT OR FUTURE PROPERTY PERFORMANCE.