

177  
MEETING

TARGET

KING STREET

THE  
CHARLESTON PLACE  
HISTORIC DOWNTOWN

MEETING STREET

CHARLESTON CITY MARKET

# 177 MEETING STREET, Charleston, SC

CLASS A OFFICE SPACE | Chase Bank Building | 2,582 - 19,234 SF For Lease

## CONTACT US

**Charlie Carmody**  
Senior Vice President  
+1 843 577 1155  
charles.carmody@cbre.com

**Ryan Carmody**  
Vice President  
+1 843 577 1162  
ryan.carmody@cbre.com

**CBRE**

# PROPERTY HIGHLIGHTS



Move-in ready office space with non-traditional shorter term lease option (1-3 years)



Centrally located- across the street from the iconic Charleston City Market & the Charleston Place Hotel



Current businesses include Chase Bank, Fusion, Peoplelease, Subway, Palmetto Barber + many more



Within a mile radius includes the new Target, the Peninsula Grill, Meeting at Market Pub, Hyman's Seafood Grill, FIG, 82 Queen, SNOB + many more of Charleston's classic's to impress Client's or for a wind-down lunch break

\$42.00  
PSF

2,582 - 19,234 SF  
AVAILABLE

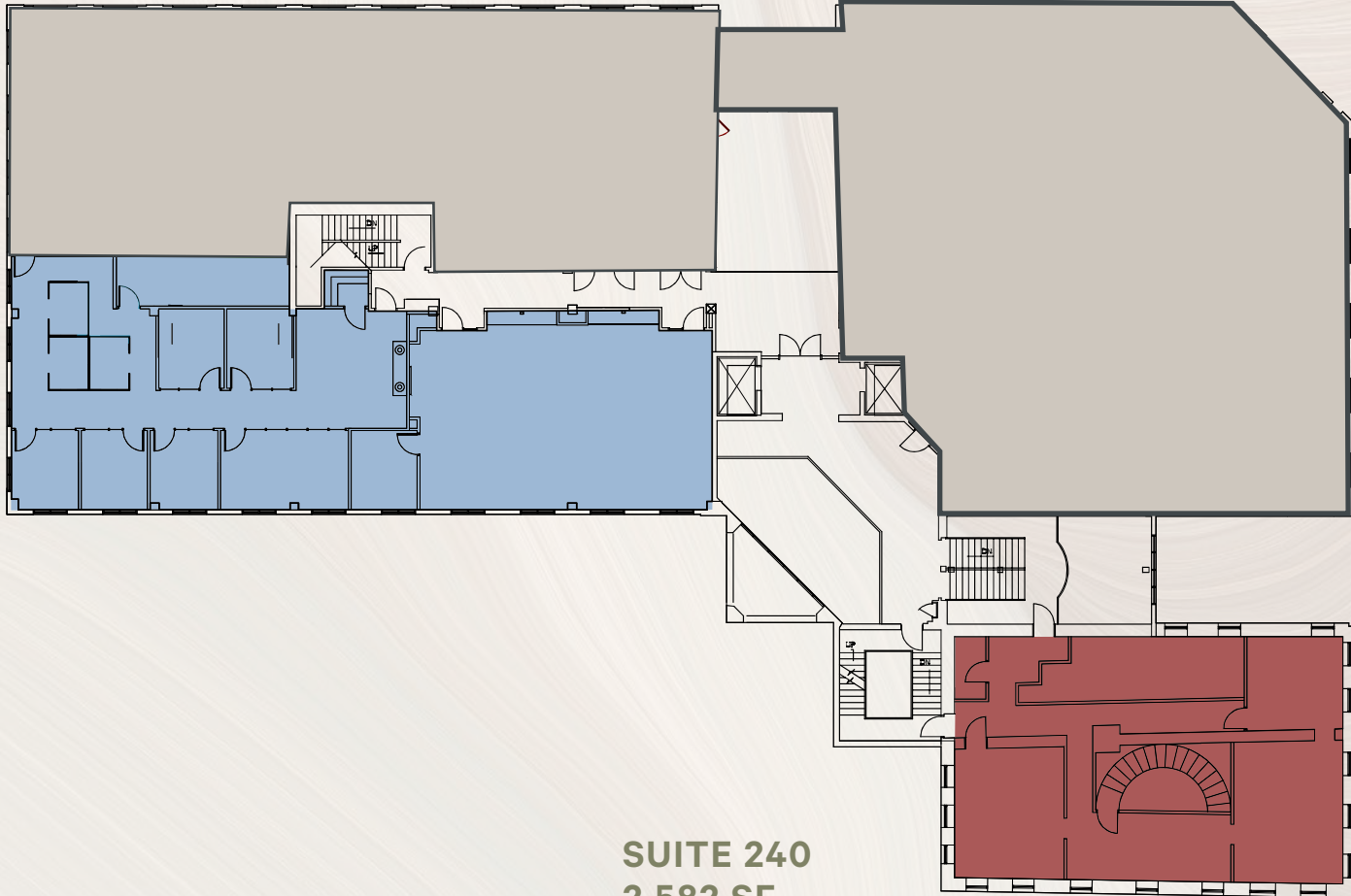


**2ND FLOOR**

SUITE 220:	4,206 RSF
SUITE 240:	2,582 RSF



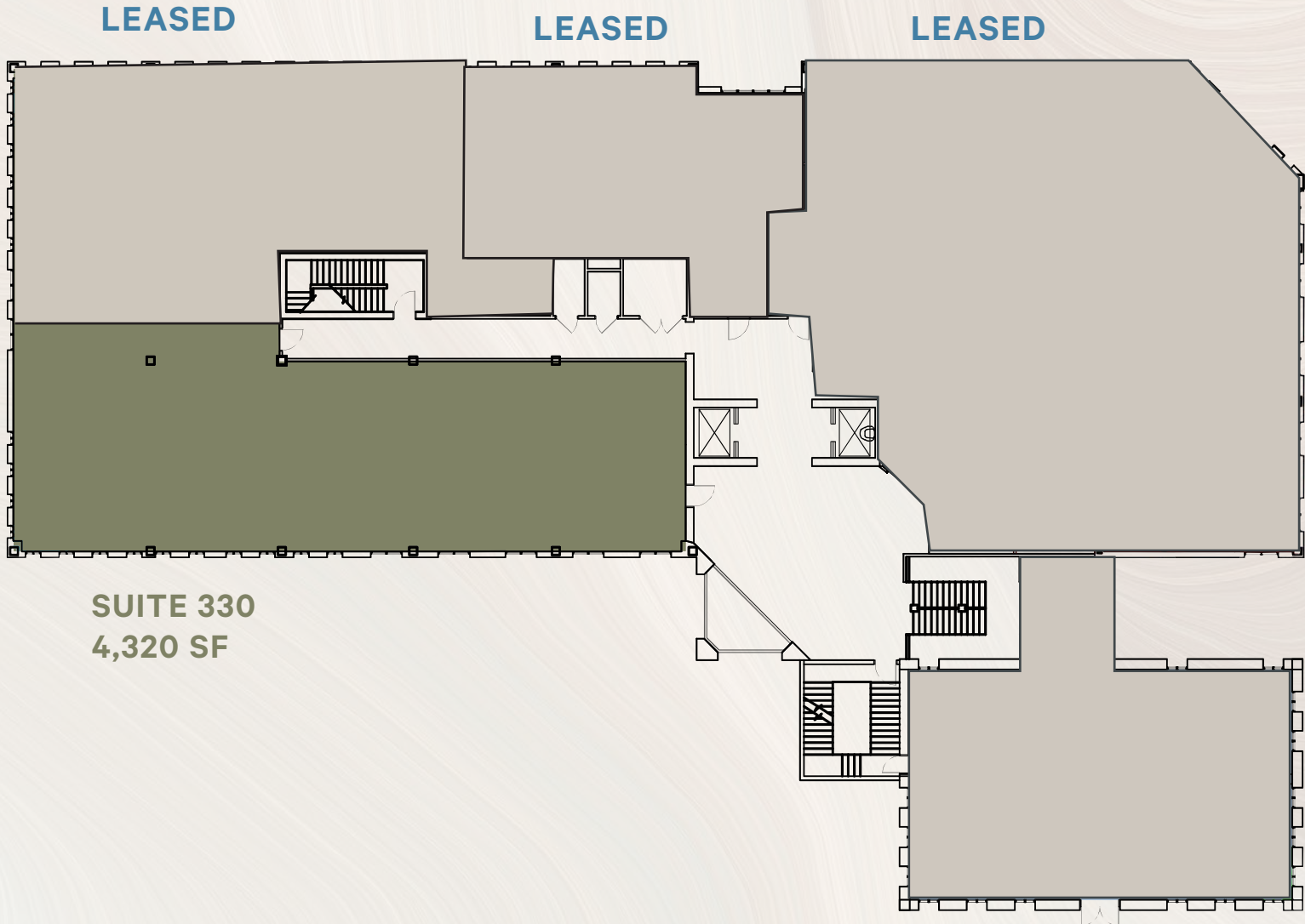
**SUITE 220**  
4,206 SF



**SUITE 240**  
2,582 SF

**3RD FLOOR**

SUITE 330: 4,320 RSF



LEASED

## 4TH FLOOR

SUITE 420:

5,490 RSF

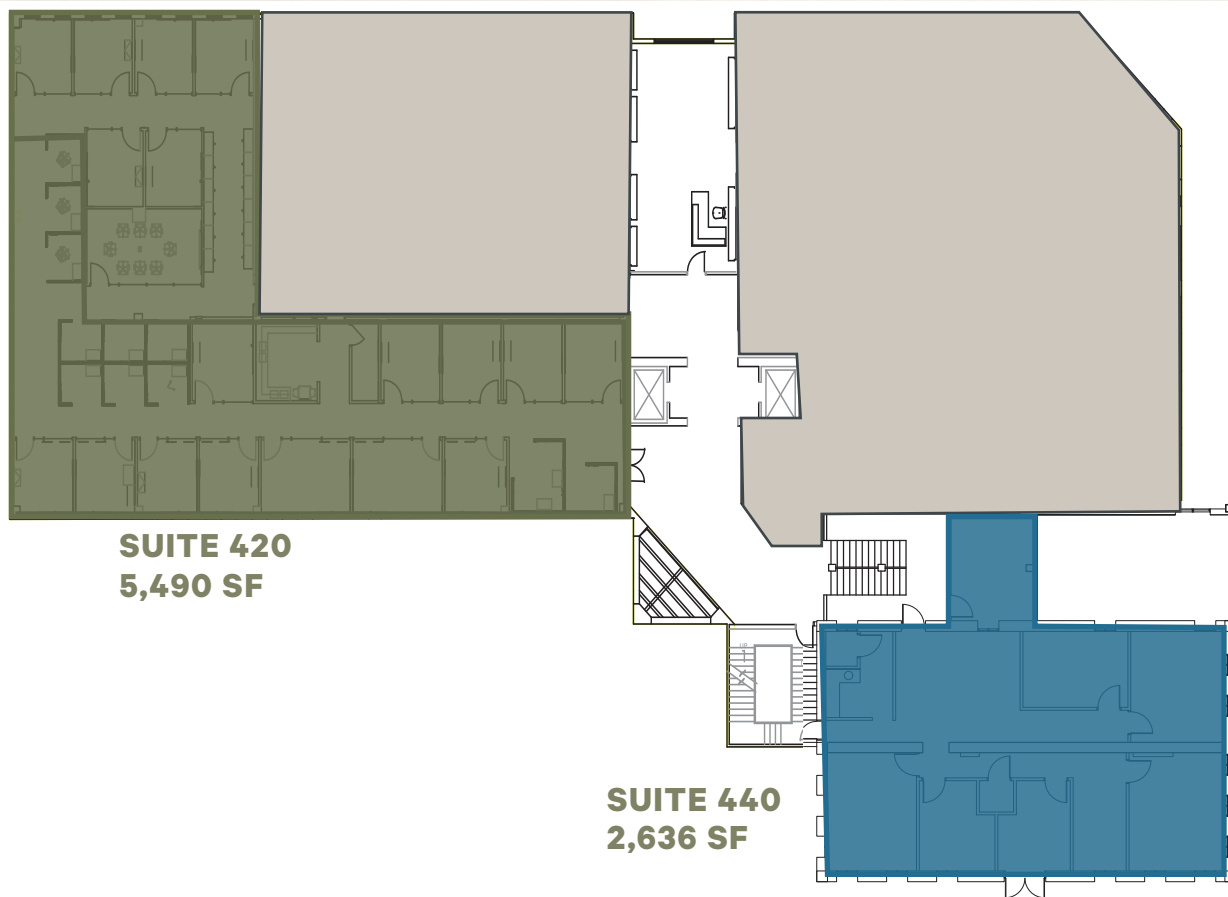
SUITE 440:

2,636 RSF



LEASED

LEASED





177  
MEETING

**CONTACT:**

**Charlie Carmody**  
Senior Vice President  
+1 843 577 1155  
[charles.carmody@cbre.com](mailto:charles.carmody@cbre.com)

**Ryan Carmody**  
Vice President  
+1 843 577 1162  
[ryan.carmody@cbre.com](mailto:ryan.carmody@cbre.com)

© 2026 CBRE, Inc. All rights reserved. This information has been obtained from sources believed reliable, but has not been verified for accuracy or completeness. You should conduct a careful, independent investigation of the property and verify all information. Any reliance on this information is solely at your own risk. CBRE and the CBRE logo are service marks of CBRE, Inc. All other marks displayed on this document are the property of their respective owners, and the use of such logos does not imply any affiliation with or endorsement of CBRE. Photos herein are the property of their respective owners. Use of these images without the express written consent of the owner is prohibited.