



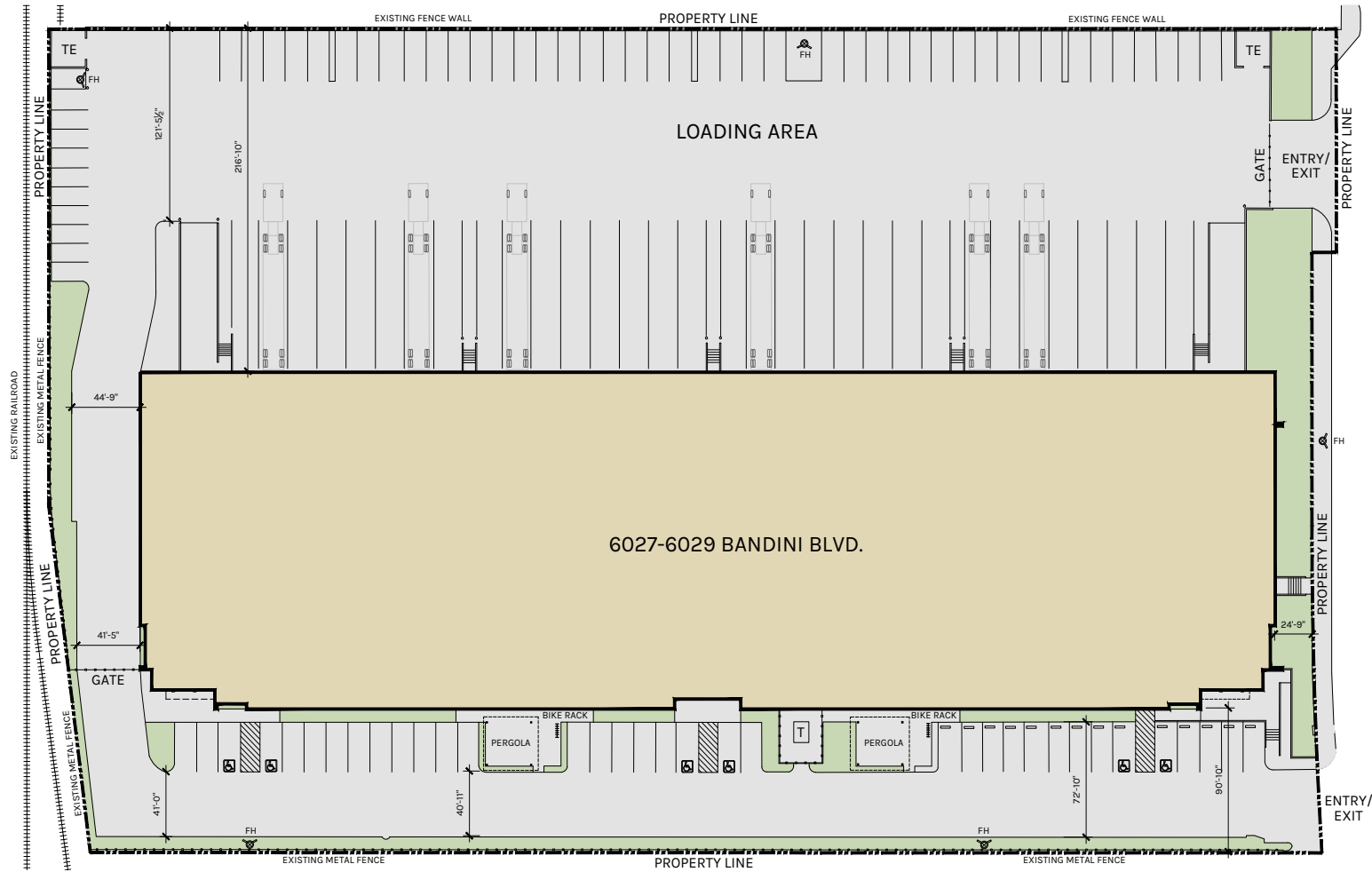
65,571 SQUARE FEET FOR LEASE

PREMIER WAREHOUSE DISTRIBUTION FACILITY AVAILABLE
6027 Bandini Blvd | Commerce, CA 90040



Property Highlights

- 65,571 square feet
- 9,298 square feet of office (4,462 square feet of Mezzanine office space)
- 32' minimum warehouse clearance
- (16) dock high positions, (2) grade level doors
- ESFR sprinkler system (K25 sprinkler heads)
- 100% concrete truck court
- 1,200 Amps



WAREHOUSE
56,273 SF

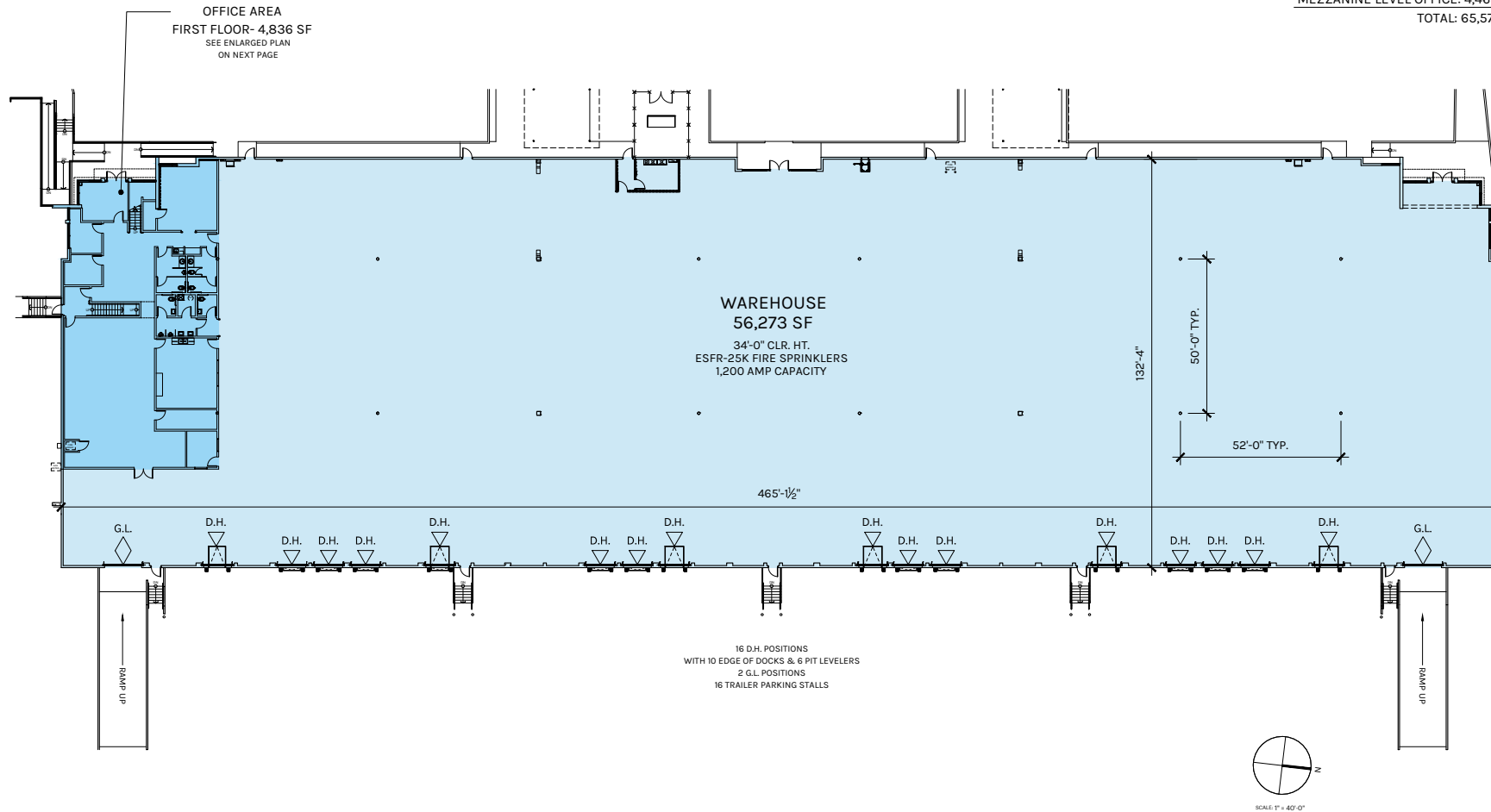
OFFICE
9,298 SF

TOTAL
65,571 SF

PLAN LAYOUT SUBJECT TO FIELD CONDITIONS AND MAY DIFFER FROM PLAN AS SHOWN. ALL INFORMATION PRESENTED ON THIS DRAWING IS PRESUMED TO BE ACCURATE, HOWEVER TENANT SHOULD VERIFY PERTINENT INFORMATION PRIOR TO COMMITTING TO A LEASE. ANY FURNITURE OR APPLIANCES SHOWN ON PLAN ARE FOR CONCEPT ONLY AND WILL BE TENANT PROVIDED.



WAREHOUSE: 56,273 SF
GROUND LEVEL OFFICE: 4,836 SF
MEZZANINE LEVEL OFFICE: 4,462 SF
TOTAL: 65,571 SF



WAREHOUSE
56,273 SF

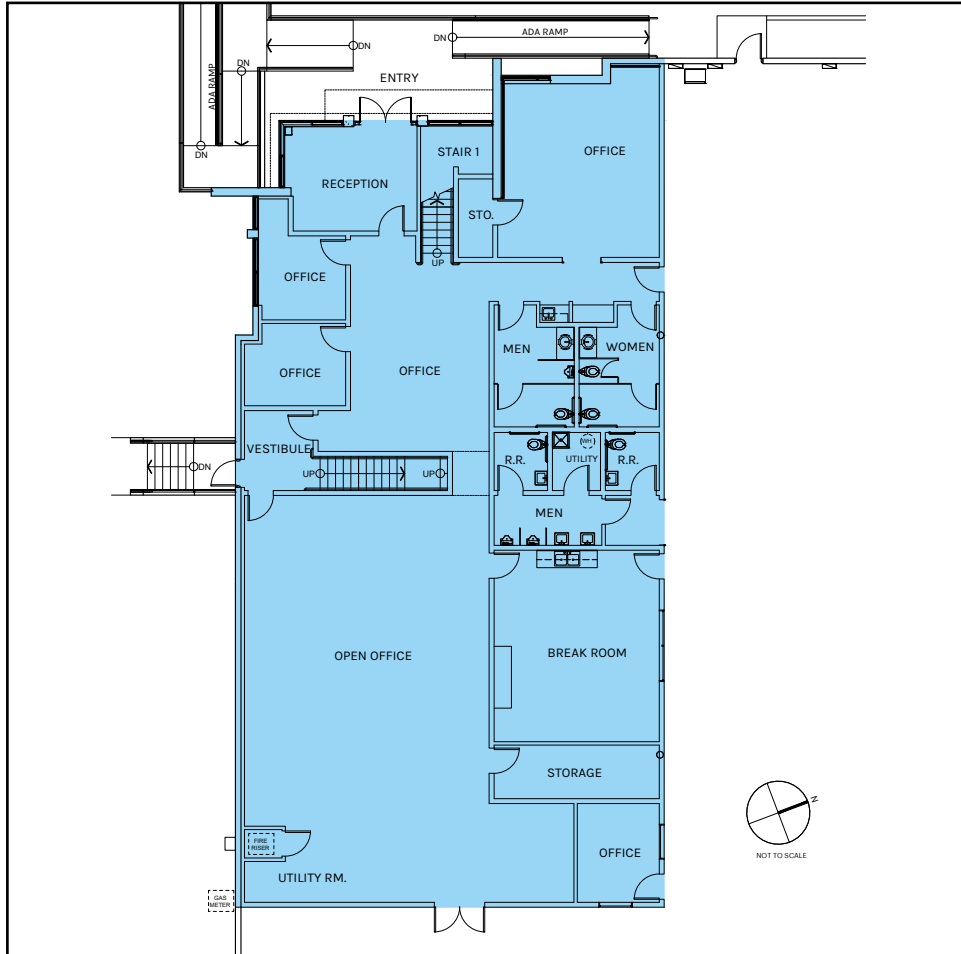
OFFICE
9,298 SF

TOTAL
65,571 SF

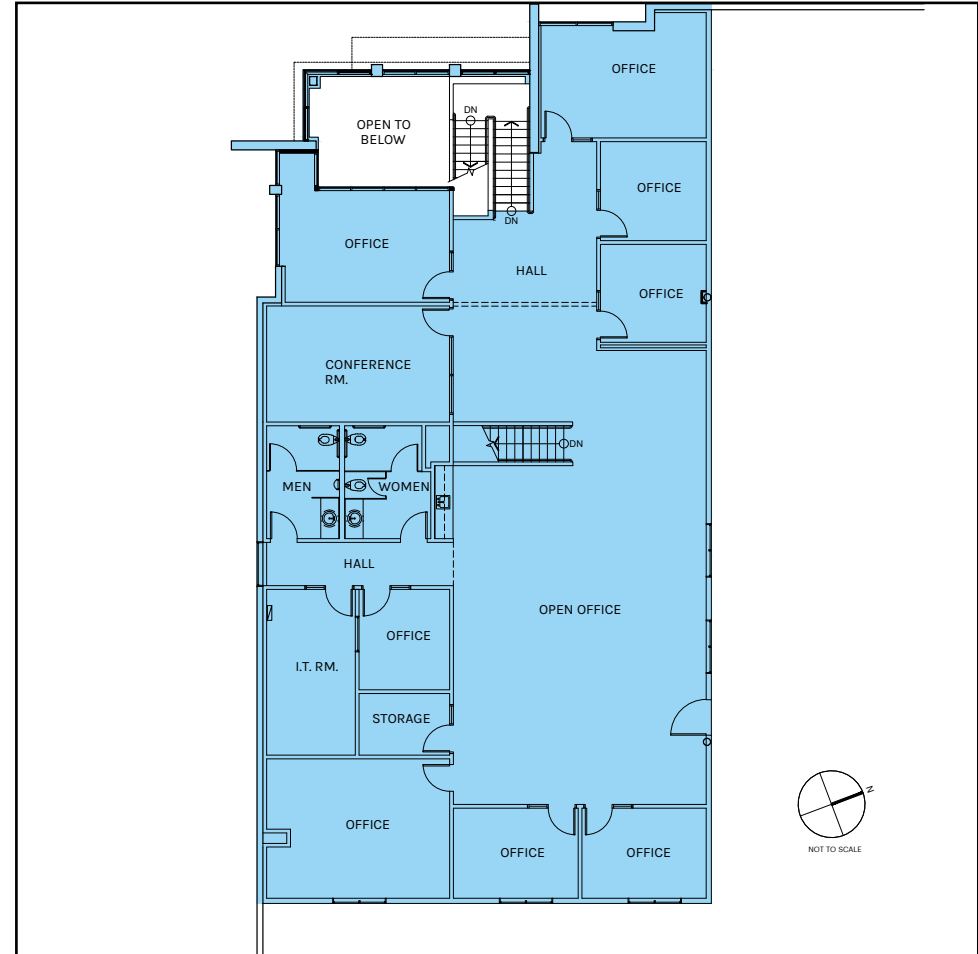
PLAN LAYOUT SUBJECT TO FIELD CONDITIONS AND MAY DIFFER FROM PLAN AS SHOWN. ALL INFORMATION PRESENTED ON THIS DRAWING IS PRESUMED TO BE ACCURATE, HOWEVER TENANT SHOULD VERIFY PERTINENT INFORMATION PRIOR TO COMMITTING TO A LEASE. ANY FURNITURE OR APPLIANCES SHOWN ON PLAN ARE FOR CONCEPT ONLY AND WILL BE TENANT PROVIDED.



1st Floor



2nd Floor

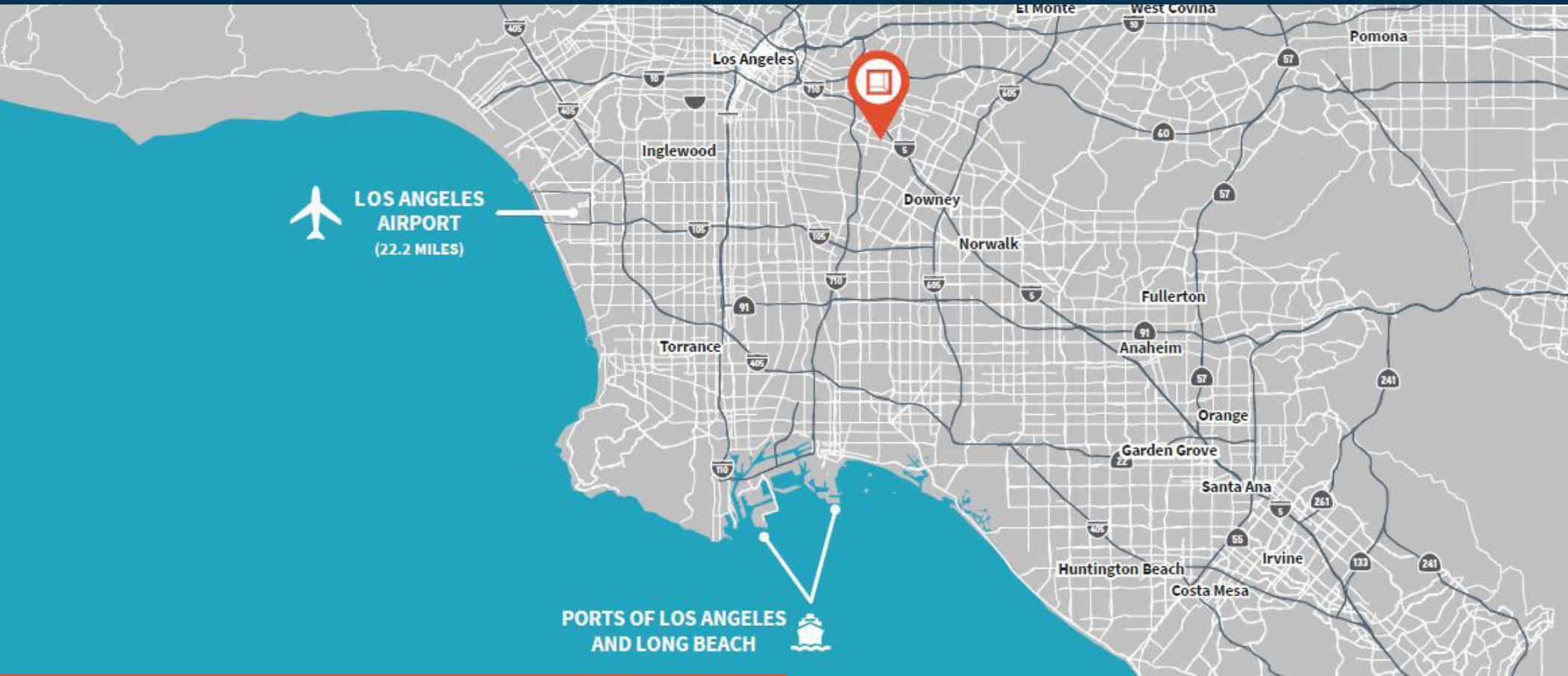


WAREHOUSE
56,273 SF

OFFICE
9,298 SF

TOTAL
65,571 SF

PLAN LAYOUT SUBJECT TO FIELD CONDITIONS AND MAY DIFFER FROM PLAN AS SHOWN. ALL INFORMATION PRESENTED ON THIS DRAWING IS PRESUMED TO BE ACCURATE, HOWEVER TENANT SHOULD VERIFY PERTINENT INFORMATION PRIOR TO COMMITTING TO A LEASE. ANY FURNITURE OR APPLIANCES SHOWN ON PLAN ARE FOR CONCEPT ONLY AND WILL BE TENANT PROVIDED.



Location Highlights

- Same day serviceability to all of Los Angeles County
- Immediate access to 5, 710 and 105 Freeways
- Proximity to multiple parcel delivery hubs
- Minutes to BNSF and Union Pacific intermodal rail yards
- Amenities and eateries at nearby Citadel Outlets

2.3 Miles
to I-5

23.1 Miles
to LAX

20.2 Miles
to Long Beach
Airport

1.9 Miles
to I-710

23.0 Miles
to Port of LA and
LB

18.5 Miles
to Alameda Corridor

13.7 Miles
to I-105

10.1 Miles
to DTLA

16.7 Miles
to ICTF



**Rexford
Industrial**

LEASING CONTACTS

ZAC SAKOWSKI
Vice Chairman
424-294-3429
zac.sakowski@jll.com
LIC # 01856260

BRIANNA DEMUS
Managing Director
424-294-3436
brianna.demus@jll.com
LIC #02049585

CAMERON DRISCOLL
Executive Managing Director
949-885-2976
cameron.driscoll@jll.com
LIC # 01224141

LUKE MCDANIEL
Executive Managing Director
949-885-2974
luke.mcdaniel@jll.com
LIC #01203625



Jones Lang LaSalle
2141 Rosecrans Ave., Suite 6100
El Segundo, CA 90245

424.294.3400
<https://www.us.jll.com/>

JONES LANG LASALLE BROKERAGE, INC. LICENSE #01856260. COPYRIGHT © JONES LANG LASALLE IP, INC.
2025 ALL RIGHTS RESERVED. ALL INFORMATION CONTAINED HEREIN IS FROM SOURCES DEEMED RELIABLE;
HOWEVER, NO REPRESENTATION OR WARRANTY IS MADE TO THE ACCURACY THEREOF.