

Prime Retail and Office
Space For Lease

Liberty Square

3601 HIGHWAY 7 EAST
MARKHAM, ON



CBRE

Property Overview

Prime opportunity to lease highly visible ground-floor and second-floor office space in Markham's premier commercial condo project - Liberty Square. Home to a dynamic mix of office and retail tenants, this 260,000 sf commercial development is part of a large mixed-use community at the corner of Warden Avenue and Highway 7 in the center of Markham. Part of the Downtown Markham master planned community. Close proximity to Markham City Hall, Hilton Suites Hotel, Highway 407. Units are available in combinations from 560 sf up to 7,000 sf. Retail/ground floor includes an opportunity for signage and a direct entrance. Underground and Surface Parking.



Well maintained units located in a prominent Class "A" Markham office building



Proximity to Highways 404 and 407



Direct access to transit



Convenient access to many amenities



Cafe and food retailers onsite



Ample surface and underground parking available

Retail Availabilities

SUITE	SIZE
106	732 sf
107	1,494 sf
108	1,898 sf
109	1,494 sf
110	939 sf
106 - 107	2,226 sf
106 - 108	4,124 sf
106 - 109	5,618 sf
106 - 110	6,557 sf
NET RENT	ADDITIONAL RENT
\$36.00 PSF	\$21.75 PSF



Office Availabilities

SUITE	SIZE
206	1,102 sf
207	1,262 sf
208	1,692 sf
209	1,260 sf
210 - 212	1,644 sf
206 - 207	2,364 sf
206 - 208	4,056 sf
206 - 209	5,316 sf
206 - 210	5,874 sf
206 - 211	6,417 sf
206 - 212	6,960 sf



NET RENT

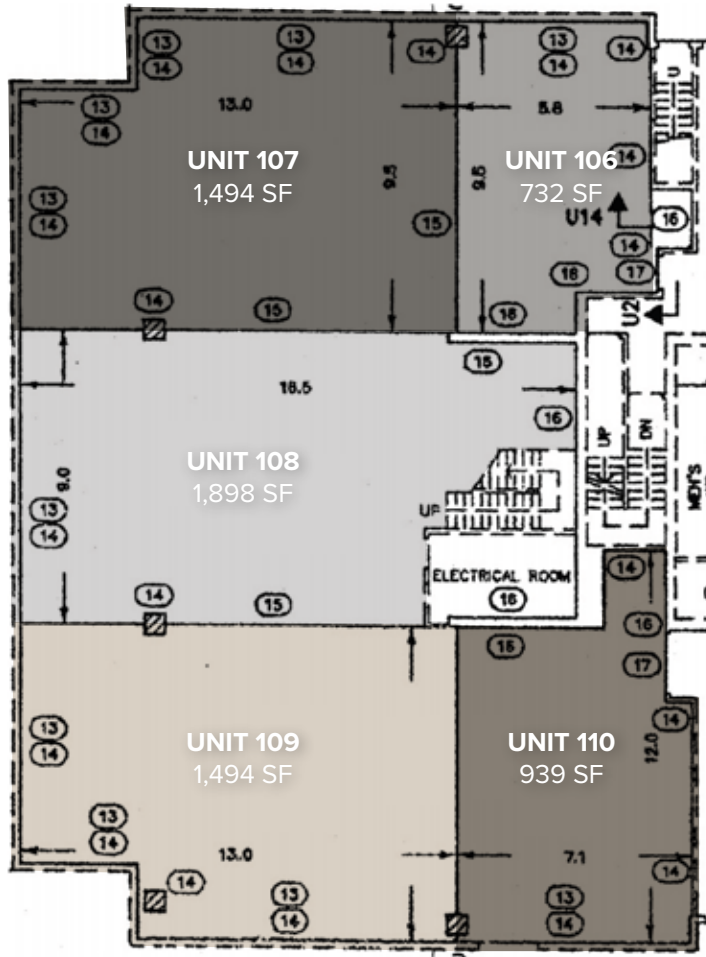
ADDITIONAL RENT

\$22.00 PSF

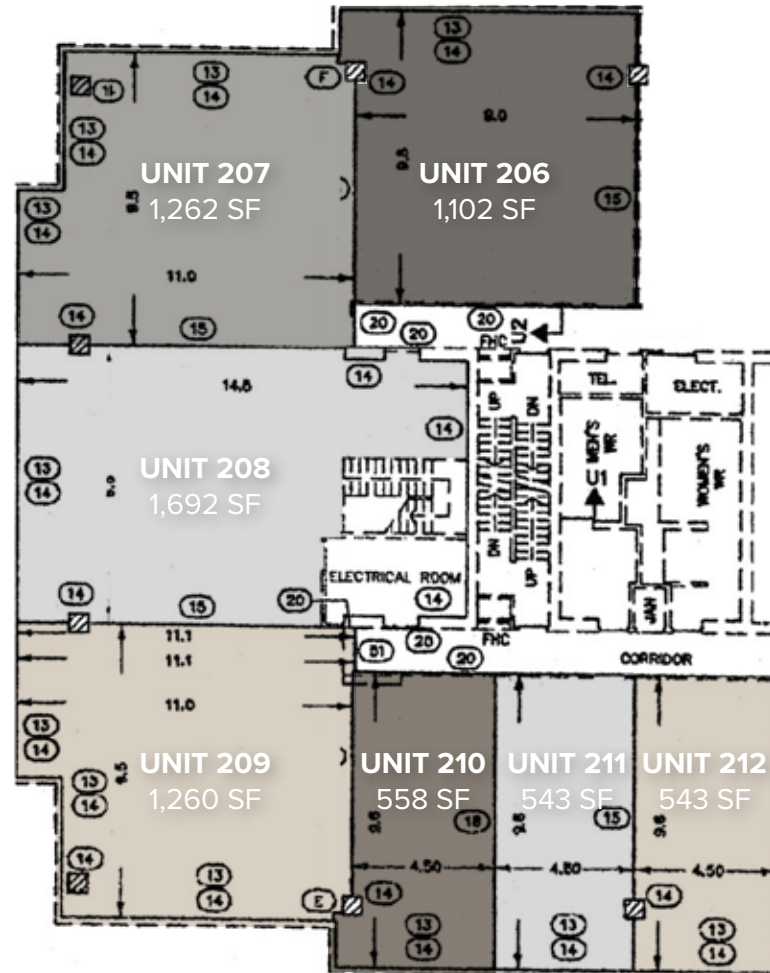
\$21.75 PSF

Floor Plan

Retail - Ground Floor



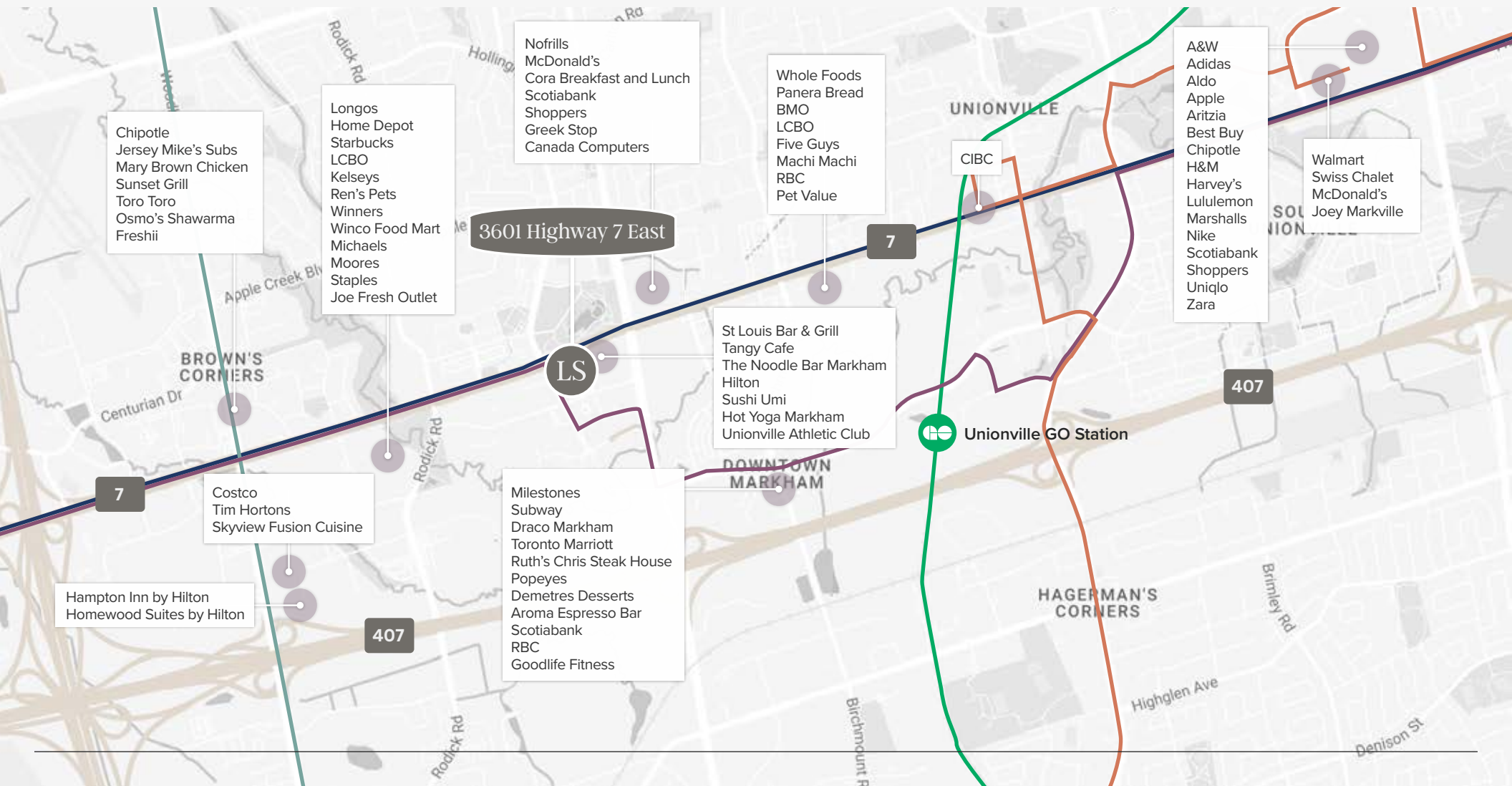
Office - Second Floor



*Floor plans are for illustrative purposes only and are not to scale. All outlines are approximate.

Amenities

- YRT Route - Highway 7
- VIVA Line - Purple
- GO Line - Stouffville
- YRT Route - Woodbine
- YRT Route - Markham



- Chipotle
- Jersey Mike's Subs
- Mary Brown Chicken
- Sunset Grill
- Toro Toro
- Osmo's Shawarma
- Freshii

- Longos
- Home Depot
- Starbucks
- LCBO
- Kelseys
- Ren's Pets
- Winners
- Winco Food Mart
- Michaels
- Moore's
- Staples
- Joe Fresh Outlet

- Nofrills
- McDonald's
- Cora Breakfast and Lunch
- Scotiabank
- Shoppers
- Greek Stop
- Canada Computers

- Whole Foods
- Panera Bread
- BMO
- LCBO
- Five Guys
- Machi Machi
- RBC
- Pet Value

- A&W
- Adidas
- Aldo
- Apple
- Aritzia
- Best Buy
- Chipotle
- H&M
- Harvey's
- Lululemon
- Marshalls
- Nike
- Scotiabank
- Shoppers
- Uniqlo
- Zara

- Walmart
- Swiss Chalet
- McDonald's
- Joey Markville

- St Louis Bar & Grill
- Tangy Cafe
- The Noodle Bar Markham
- Hilton
- Sushi Umi
- Hot Yoga Markham
- Unionville Athletic Club

- Milestones
- Subway
- Draco Markham
- Toronto Marriott
- Ruth's Chris Steak House
- Popeyes
- Demetres Desserts
- Aroma Espresso Bar
- Scotiabank
- RBC
- Goodlife Fitness

- Costco
- Tim Hortons
- Skyview Fusion Cuisine

- Hampton Inn by Hilton
- Homewood Suites by Hilton

3601 Highway 7 East

LS

Unionville GO Station

CIBC

UNIONVILLE

DOWNTOWN MARKHAM

HAGERMAN'S CORNERS

407

407

Brimley Rd

Highglan Ave

Denison St

Birchmount R

Rodick Rd

Rodick Rd

Apple Creek Bl

Centurian Dr

BROWN'S CORNERS

SOUTH

3601 HIGHWAY 7 EAST
MARKHAM, ON

Liberty Square

Matt Gunning**, SIOR
Senior Vice President
+1 416 495 6313
matt.gunning@cbre.com

Mark Sullivan*
Vice President
+1 416 495 6262
markp.sullivan@cbre.com

*Sales Representative **Broker

CBRE Limited, Real Estate Brokerage

2005 Sheppard Ave E., Suite 800, Toronto, ON M2J 5B4

www.cbre.ca

© 2026 CBRE, Inc. All rights reserved. This disclaimer shall apply to CBRE Limited, Real Estate Brokerage, and to all other divisions of the Corporation; to include all employees and independent contractors ("CBRE"). All references to CBRE Limited herein shall be deemed to include CBRE, Inc. The information set out herein, including, without limitation, any projections, images, opinions, assumptions and estimates obtained from third parties (the "Information") has not been verified by CBRE, and CBRE does not represent, warrant or guarantee the accuracy, correctness and completeness of the Information. CBRE does not accept or assume any responsibility or liability, direct or consequential, for the Information or the recipient's reliance upon the Information. The recipient of the Information should take such steps as the recipient may deem necessary to verify the Information prior to placing any reliance upon the Information. The Information may change and any property described in the Information may be withdrawn from the market at any time without notice or obligation to the recipient from CBRE. CBRE and the CBRE logo are the service marks of CBRE Limited and/or its affiliated or related companies in other countries. All other marks displayed on this document are the property of their respective owners.

Updated: 04/17/26

CBRE

