

FOR LEASE

# PALM PLAZA

1951 W COPANS RD, 2400, 2450 & 2466 N POWERLINE RD, POMPANO BEACH, FL 33069

2450 N POWERLINE RD #10



### SPACE HIGHLIGHTS

- 2,831 SF
- 527 SF Lobby and office along the window line
- 2,304 SF warehouse
- 13'9" clear ceiling
- 10' x 12' grade level overhead door
- Glass storefront entrance
- Private restroom

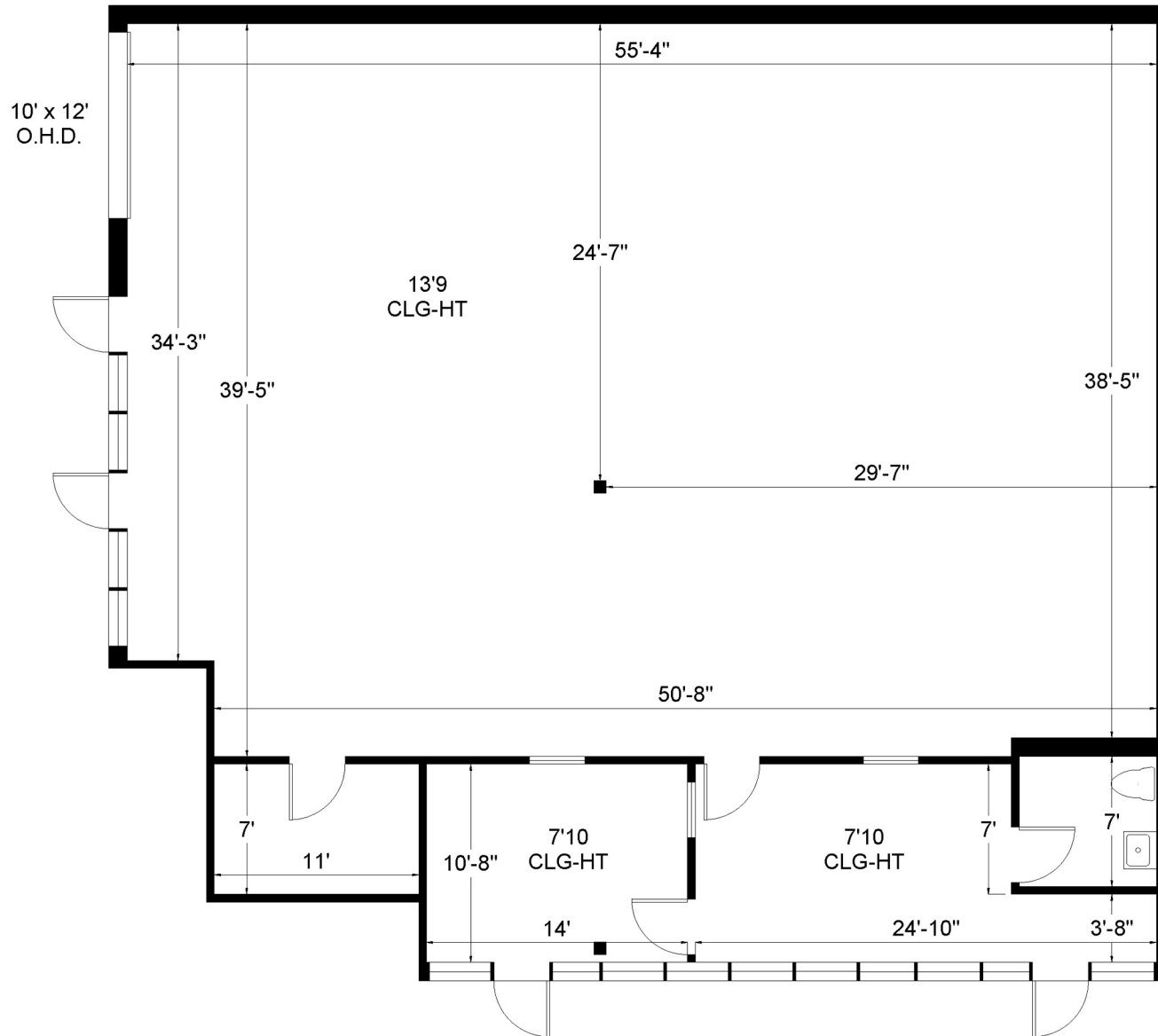


**NATALIE DELISLE**  
 Property Manager / Sales Associate  
 561.643.7063  
 natalie@levyrai.com



# PALM PLAZA

2450 N Powerline road, Unit 10 | Pompano Beach, FL 33069



Office - 527 Sq. Ft.  
Warehouse - 2,304 Sq. Ft.



Natalie Delisle | Property Manager | 954.478.1293 | Natalie@levyai.com  
4901 NW 17th Way, Suite 103 | Ft. Lauderdale, FL 33309

2,831 Rentable Sq. Ft.  
[www.LevyRealtyAdvisors.com](http://www.LevyRealtyAdvisors.com)