

4530

SHEA MEDICAL COMMONS

4530 E Shea Blvd • Phoenix, AZ 85028

OWNED BY

ALBANY ROAD

REAL ESTATE PARTNERS

LEASING BY

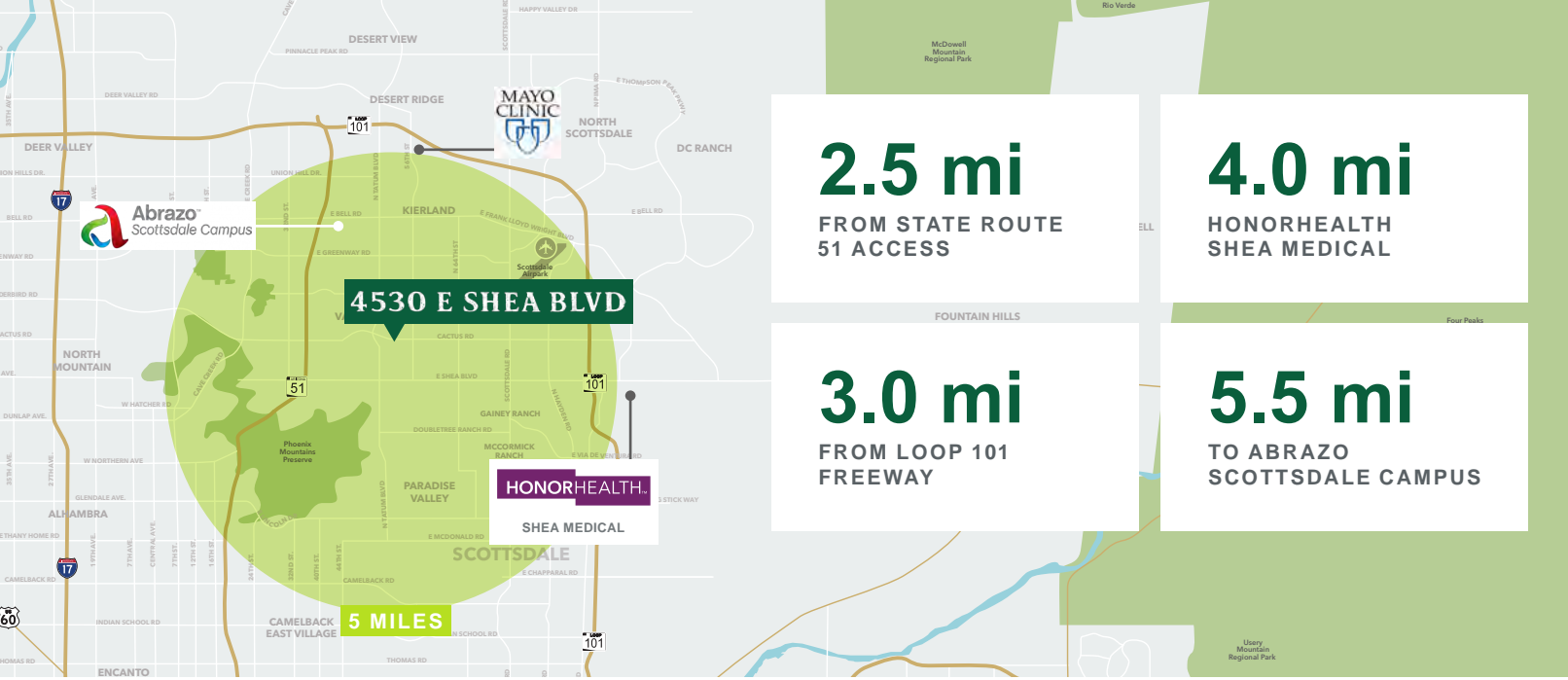
PERRY GABUZZI, CCIM

602.513.5116

perry.gabuzzi@kidder.com



**Kidder
Mathews**



Property Highlights



Class A
± 41,276 SF Building



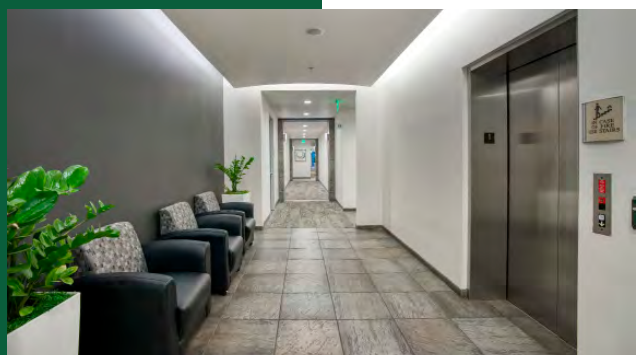
Close proximity to major hospital campuses



±3,340 SF medical spec suite coming soon



Shea Blvd frontage with
monument signage



Strong and responsive ownership



Abundance of open surface parking
available along with underground garage
parking



Professional medical building with clean
exterior



PARADISE VALLEY MALL REDEVELOPMENT

| | | | |
|--|--|--|--|
| | | | |
| | | | |
| | | | |

E CACTUS RD

N SCOTTSDALE RD

PARADISE VALLEY MARKETPLACE

| | | |
|--|--|--|
| | | |
| | | |
| | | |

E SHEA BLVD

VILLAGE AT SHEA

| | | |
|--|--|--|
| | | |
| | | |
| | | |

4530 E SHEA BLVD

N TATUM BLVD

4530

SHEA MEDICAL COMMONS

4530 E Shea Blvd
Phoenix, AZ 85208

OWNED BY



LEASING BY

PERRY GABUZZI, CCIM
602.513.5116
perry.gabuzzi@kidder.com



This information supplied herein is from sources we deem reliable. It is provided without any representation, warranty or guarantee, expressed or implied as to its accuracy. Prospective Buyer or Tenant should conduct an independent investigation and verification of all matters deemed to be material, including, but not limited to, statements of income and expenses. Consult your attorney, accountant, or other professional advisor.

ALBANYROAD.COM
KIDDER.COM