

**FOR SALE: Professional Office / Medical
Owner/ User with Income**

± 15, 385 SF

801 Douglas Ave, Altamonte Springs, FL 32714



**Second Floor Suite of 7,762 sf available for Owner/User.
100% of the First Floor is Leased.**

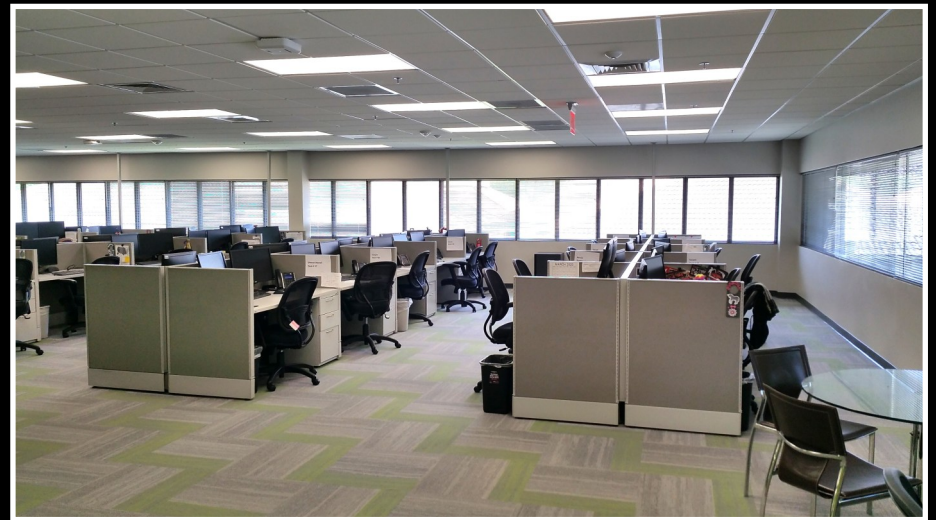
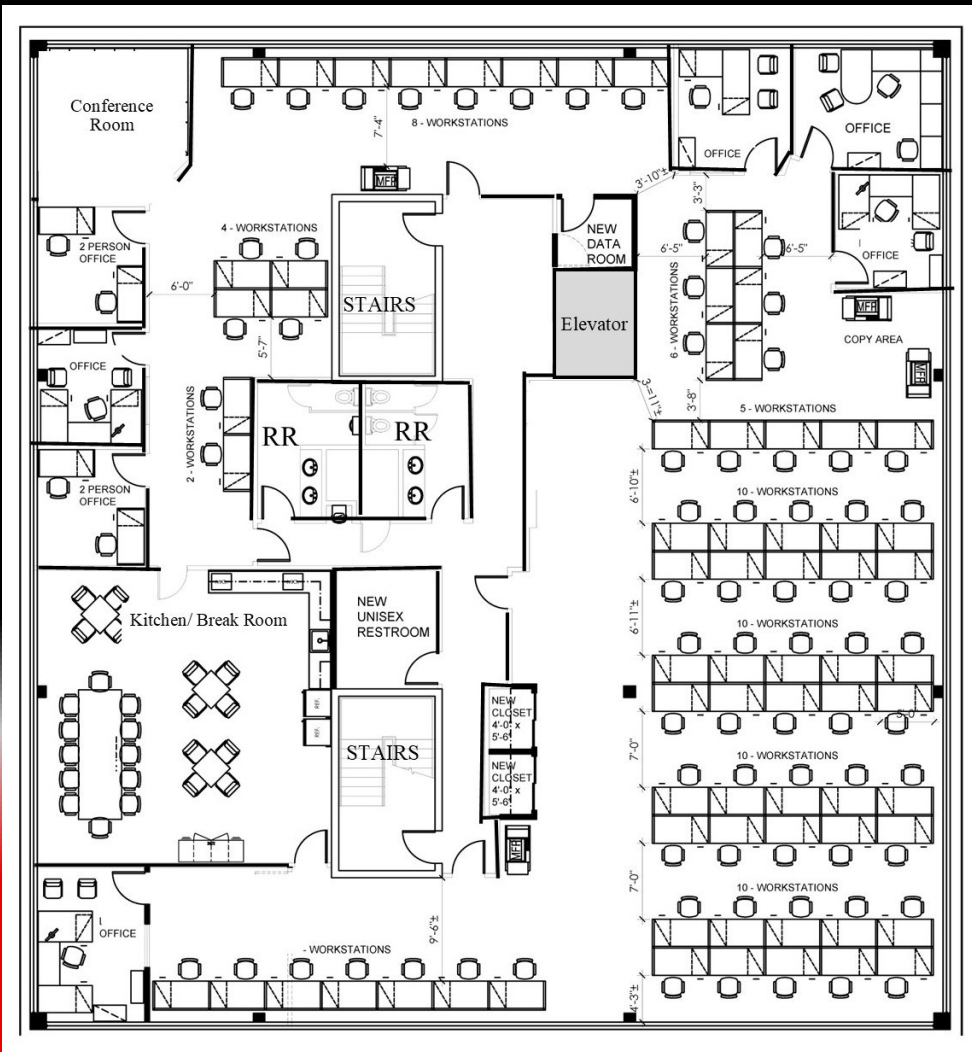
Entire Second Floor Suite of 7,762 is available for Owner/ User to Occupy.

Highlights

- Contemporary Design, Spacious Layout, and Natural Light Throughout.
- 7,762 sf of Modern, Adaptable Workspace.
- Private Offices, Conference Room, Open Work Areas, Kitchen/ Break Room.
- Furniture Included.
- Ample On-Site Parking.
- Building Located at the entrance of the Park.
- Frontage on I-4 and Douglas Ave.
- Building & Signage Opportunity.
- Express Lane Exit just one block away for quick access from I-4.



Second Floor Suite



Great Signage and Exposure.

Frontage on I-4 and Douglas Ave.

Express Lane Exit just one block away for quick access from I-4.

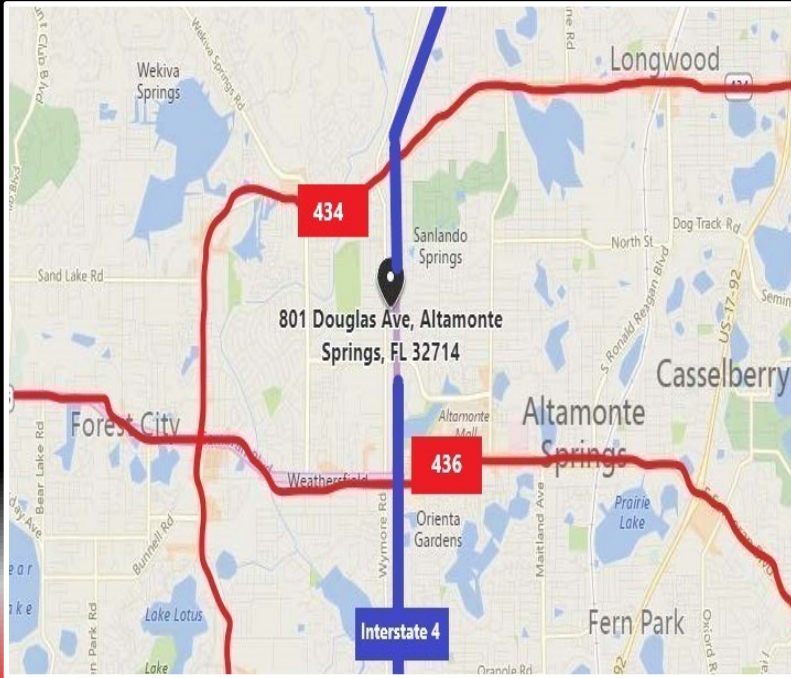
Located between 436 & 434.

Building located at the front entrance of the office park.

Parking: Ratio 5.05 per 1,000.

ADA Bathroom Compliant.

Price: \$3,510,000



David Lundberg
(407) 701-4400
dlundberg@cepadvisors.com



Greg Kainz
(407) 310-2718
gkainz@cepadvisors.com



LEGAL DISCLAIMER:

INFORMATION GIVEN HEREWITH IS OBTAINED FROM SOURCES CONSIDERED RELIABLE; HOWEVER, WE ARE NOT RESPONSIBLE FOR MISSTATEMENT OF FACTS, ERRORS, OMISSIONS, PRIOR SALE, AND WITHDRAWAL FROM MARKET, CHANGE IN PRICE OR AVAILABILITY WITHOUT NOTICE. THE INFORMATION SUPPLIED HEREIN IS FOR INFORMATION PURPOSES ONLY AND SHALL NOT CONSTITUTE A WARRANTY OR ASSURANCE THAT SAID INFORMATION IS CORRECT. ANY PERSON INTENDING TO RELY UPON THE INFORMATION SUPPLIED HEREIN SHOULD VERIFY SAID INFORMATION INDEPENDENTLY.