



Eagle Rock Executive Office Center IV

**120 EAGLE ROCK AVENUE
EAST HANOVER, NJ 07936**

| | |
|-------------------|---|
| Suite 200: | 15,795 SF (divisible to 8,920 SF and 7,055 SF) Fully furnished and wired suite with several upgrades, including windows and interior glass in each office. |
| Suite 205: | 2,292 SF (can be combined with Suite 210) |
| Suite 210: | 11,628 SF sublease (can be combined with Suite 205) |
| Suite 340: | 6,047 SF |
| Suite 350: | 6,618 SF |

Highlights & Amenities

- Full-service café with indoor/outdoor seating
- Event center with lounge
- Two shared conference rooms & 1 training room
- Modern fitness center with weights/cardio machines & M/W locker rooms
- 2-story atrium with water feature
- 24-hour secure key card access
- On-site FedEx & mail drop boxes
- Walking paths
- Overlooks pond with multiple fountains
- 24/7 access

For information, please contact:

Jeff Kolodkin

Senior Managing Director

t 201-460-5163

jeff.kolodkin@nmrk.com

Andrew Kirshenbaum

Associate Director

t 201-460-5119

andrew.kirshenbaum@nmrk.com

201 Route 17 North
Rutherford, NJ 07070



nmrk.com

NEWMARK

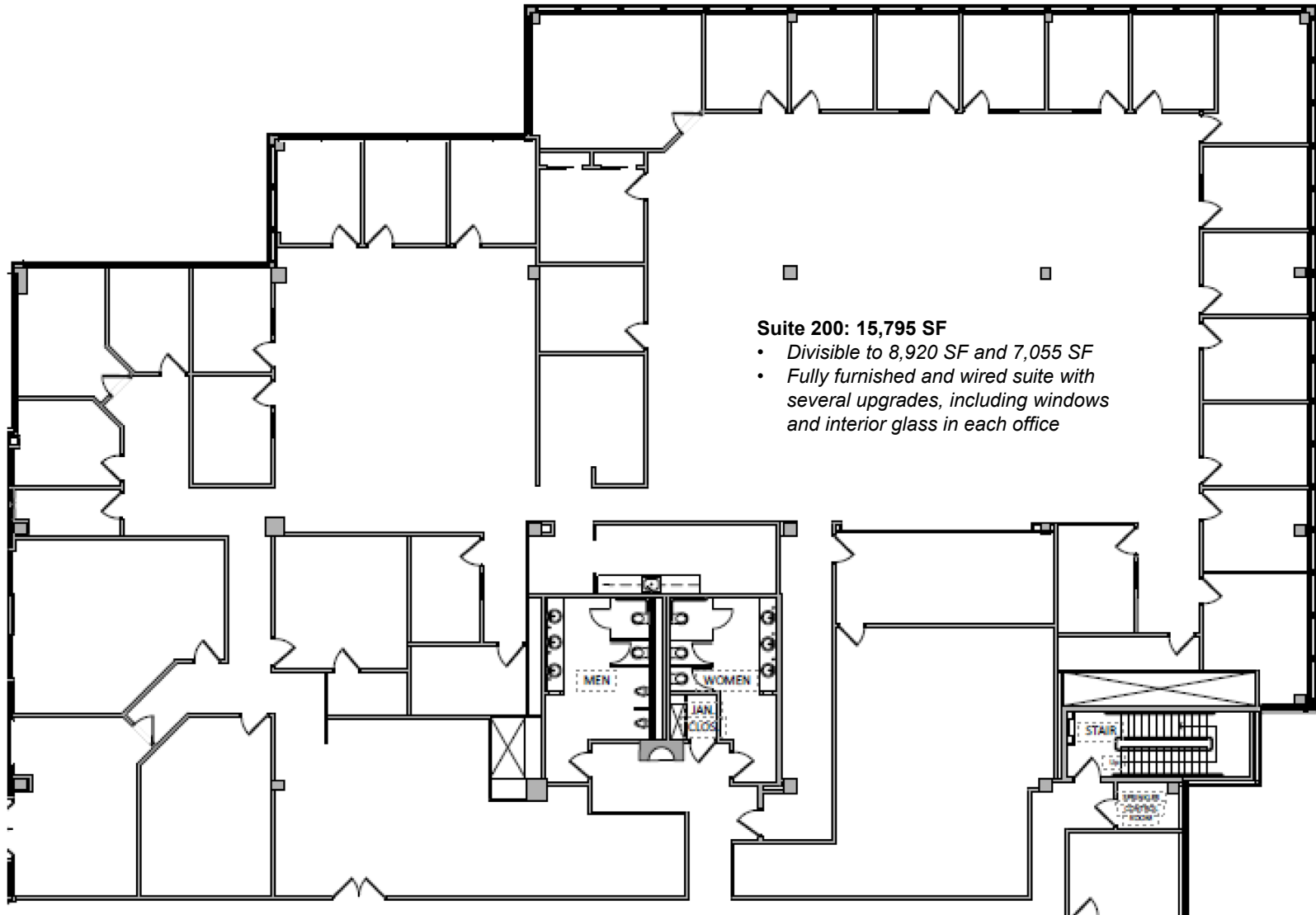
The information contained herein has been obtained from sources deemed reliable but has not been verified and no guarantee, warranty or representation, either express or implied, is made with respect to such information. Terms of sale or lease and availability are subject to change or withdrawal without notice.



Location



Floor Plan: Suite 200



Jeff Kolodkin

Senior Managing Director

t 201-460-5163

jeff.kolodkin@nmrk.com

Andrew Kirshenbaum

Associate Director

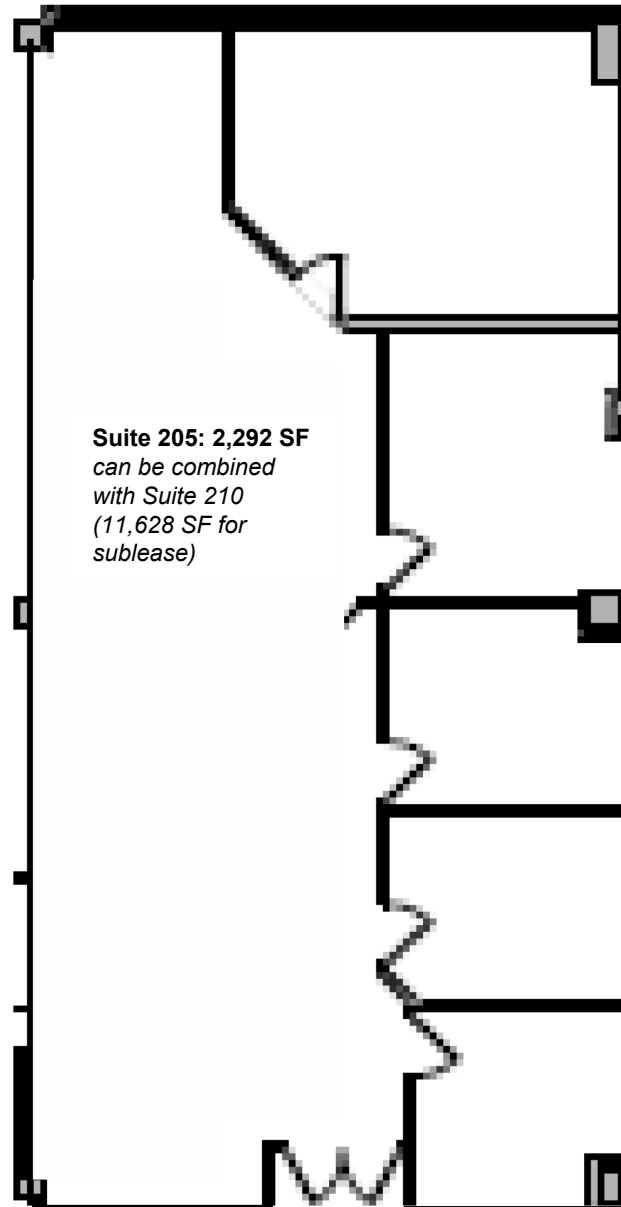
t 201-460-5119

andrew.kirshenbaum@nmrk.com

NEWMARK

Not to scale. The information contained herein has been obtained from sources deemed reliable but has not been verified and no guarantee, warranty or representation, either express or implied, is made with respect to such information. Terms of sale or lease and availability are subject to change or withdrawal without notice.

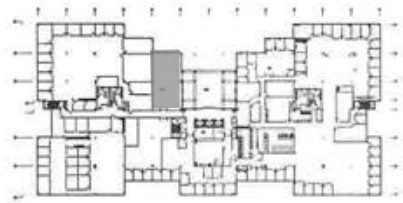
Floor Plan: Suite 205



Jeff Kolodkin
Senior Managing Director
t 201-460-5163
jeff.kolodkin@nmrk.com

Andrew Kirshenbaum
Associate Director
t 201-460-5119
andrew.kirshenbaum@nmrk.com

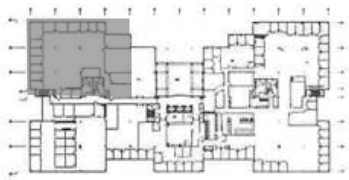
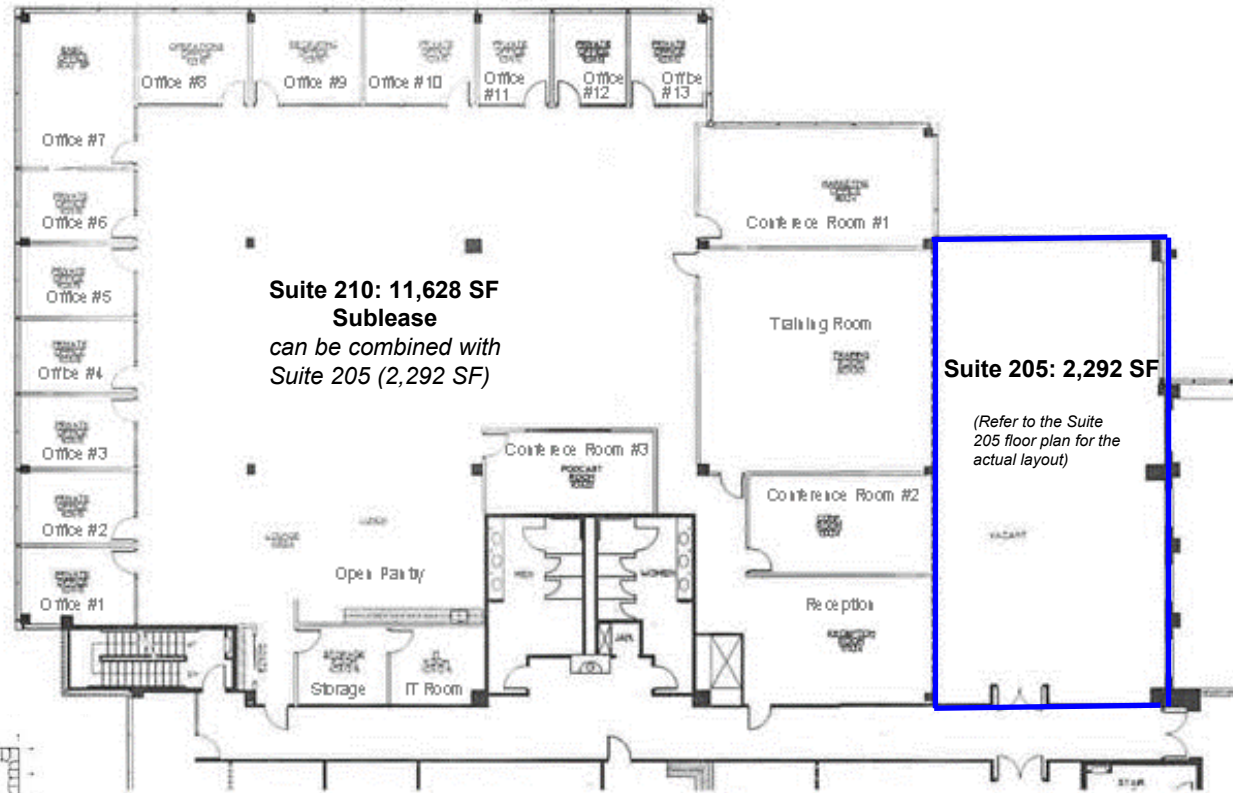
Not to scale. The information contained herein has been obtained from sources deemed reliable but has not been verified and no guarantee, warranty or representation, either express or implied, is made with respect to such information. Terms of sale or lease and availability are subject to change or withdrawal without notice.



KEY PLAN

Floor Plan: Suite 210 (sublease)

Several upgrades including windows and interior glass in each office, conference room, and training room

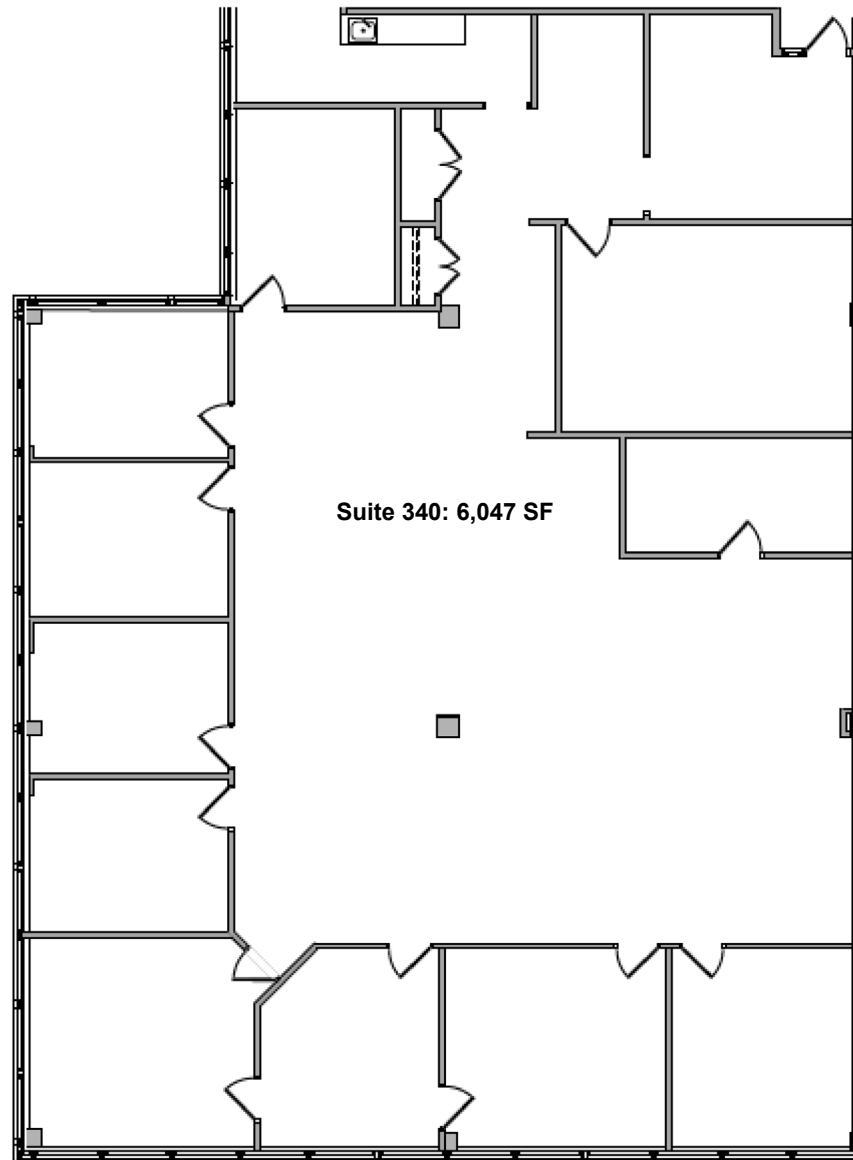


KEY PLAN

Jeff Kolodkin
 Senior Managing Director
 t 201-460-5163
jeff.kolodkin@nmrk.com

Andrew Kirshenbaum
 Associate Director
 t 201-460-5119
andrew.kirshenbaum@nmrk.com

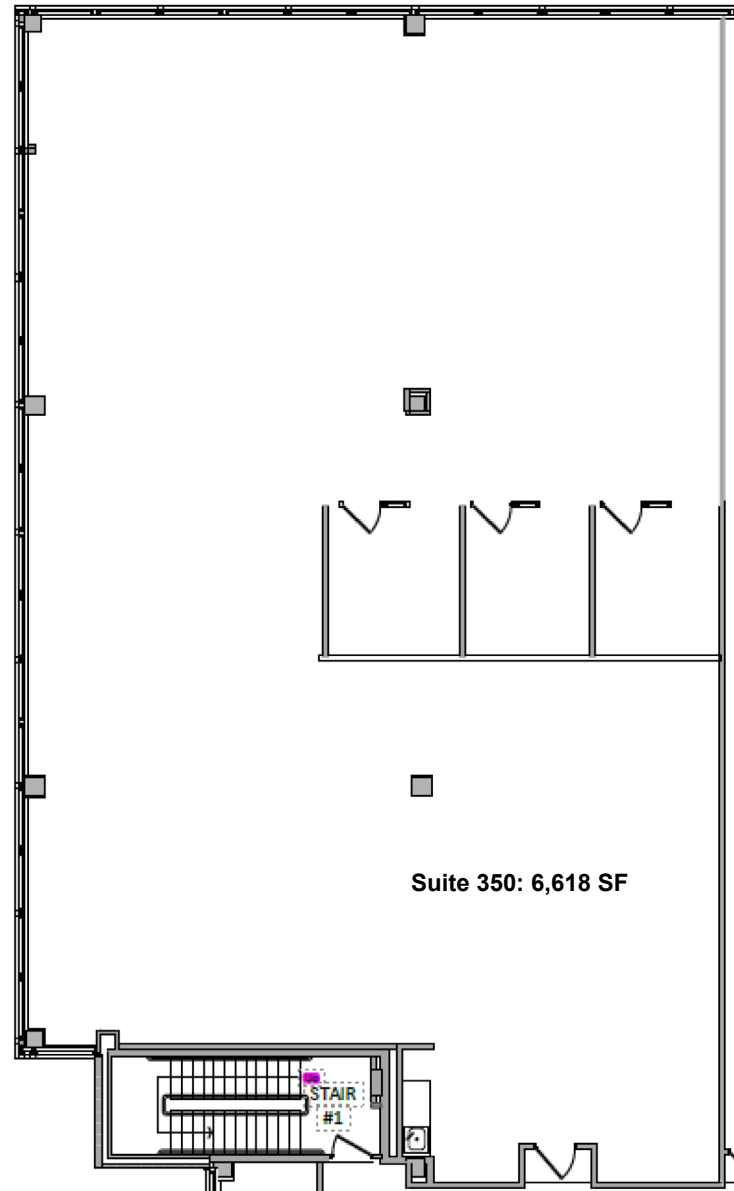
Floor Plan: Suite 340



Jeff Kolodkin
Senior Managing Director
t 201-460-5163
jeff.kolodkin@nmrk.com

Andrew Kirshenbaum
Associate Director
t 201-460-5119
andrew.kirshenbaum@nmrk.com

Floor Plan: Suite 350



Jeff Kolodkin

Senior Managing Director

t 201-460-5163

jeff.kolodkin@nmrk.com

Andrew Kirshenbaum

Associate Director

t 201-460-5119

andrew.kirshenbaum@nmrk.com