

For Lease

Vassar St. & Cordone Ave.



1301 Cordone Ave.
Reno, NV 89502

Michael Keating, SIOR
Partner
775.386.9727
mkeating@logicCRE.com
S.0174942

Michael Dorn
Senior Associate
775.453.4436
mdorn@logicCRE.com
S.0189635

Listing Snapshot



\$1.40 - \$1.50 PSF
Lease Rate



± 200 - 7,911 SF
Available Square Footage



Full Service (FS)
Lease Type

Property Highlights

- Easy access to Downtown Reno
- Conveniently located near I-580
- On-site parking available
- Common area restroom and conference room
- Elevator serviced
- Multiple sizes & configurations available
- Second floor executive suites available
- Exterior signage available for qualified tenants

Demographics

	1-mile	3-mile	5-mile
2024 Population	18,727	132,481	248,972
2024 Average Household Income	\$75,210	\$82,325	\$95,177
2024 Total Households	8,184	57,560	104,794





Floor Plan Suite 200



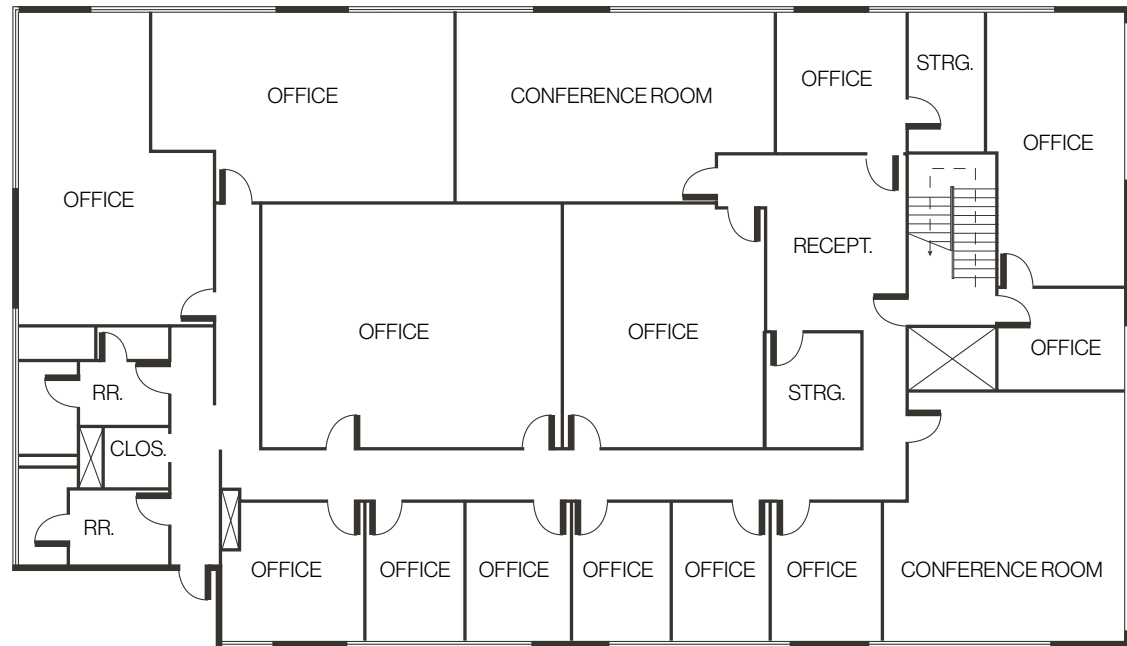
\$1.40 PSF
Lease Rate



± 7,911 SF*
Available Square Footage

- Whole floor suite
- Private restrooms
- Two (2) conference rooms
- Fourteen (14) offices
- Reception

*Contact broker for potential demising options



[Click for a Virtual Tour](#)

Floor Plan

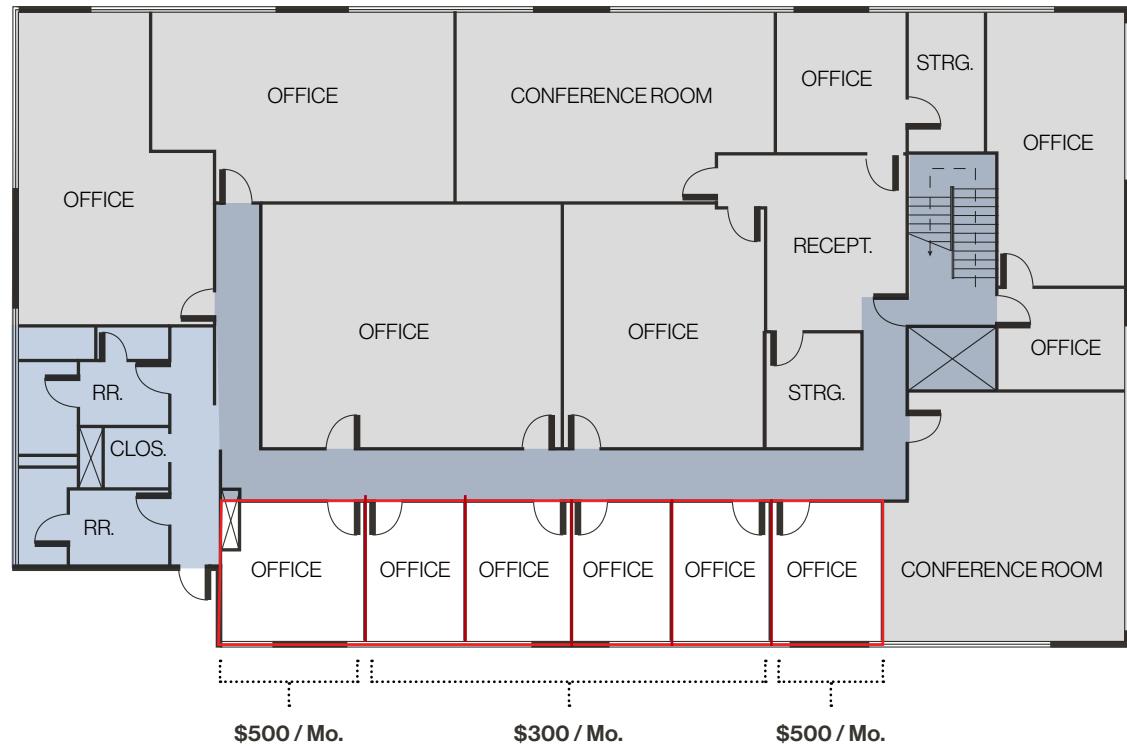
Suite 200 | Executive Suites

Available
 NAP
 Common Area

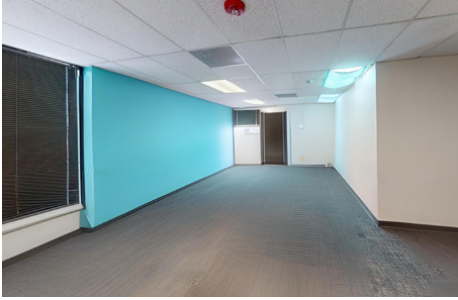


± **200 - 400 SF**
 Available Square Footage

[Click for a Virtual Tour](#)



Floor Plan Suite 300



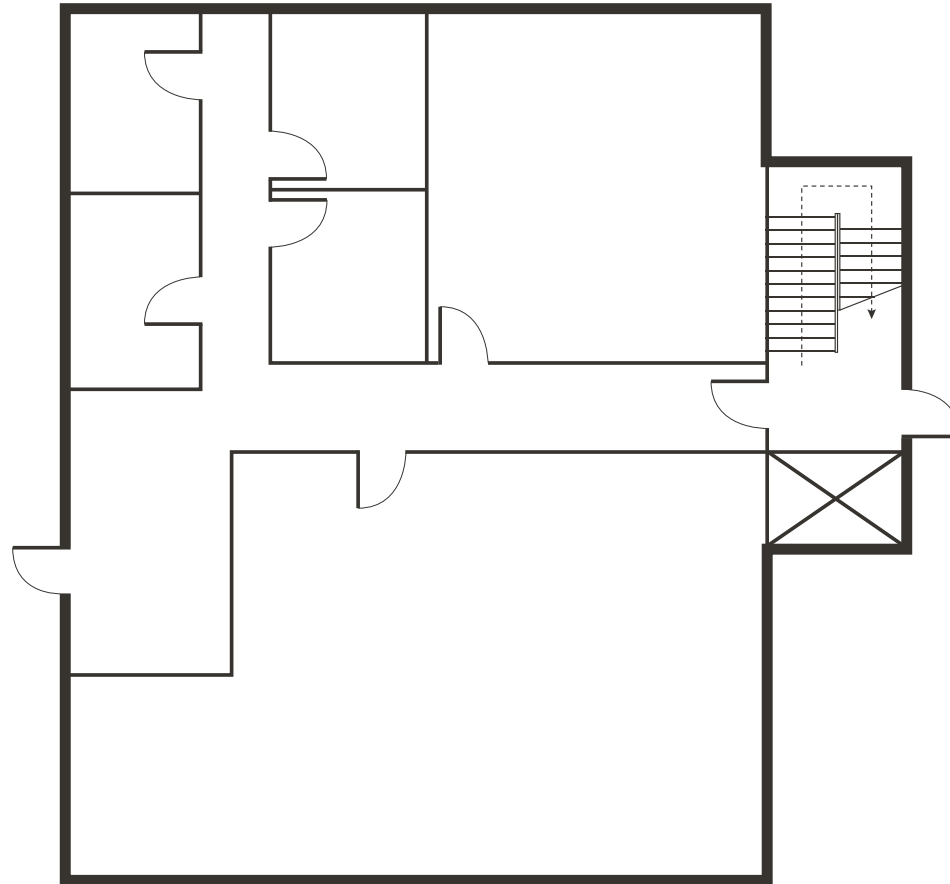
\$1.50 PSF
Lease Rate



± 2,724 SF
Available Square Footage

- Whole floor suite
- Two (2) private restrooms
- Four (4) private offices
- Break room

[Click for a Virtual Tour](#) 

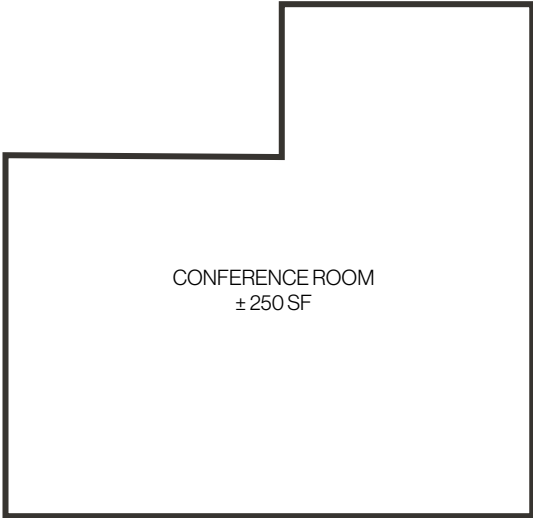


Floor Plan

Event & Conference Rooms



Lower Level



First Floor

Property Photos



LOGIC Commercial Real Estate

Specializing in Brokerage and Receivership Services



Join our email list and
connect with us on LinkedIn

The information herein was obtained from sources deemed reliable; however LOGIC Commercial Real Estate makes no guarantees, warranties or representation as to the completeness or accuracy thereof.

For inquiries please reach out to our team.

Michael Keating, SIOR

Partner
775.386.9727
mkeating@logicCRE.com
S.0174942

Michael Dorn

Senior Associate
775.453.4436
mdorn@logicCRE.com
S.0189635