



Water Tower Place Business Center
6901 E Fish Lake Road
Maple Grove, MN 55369

FOR LEASE
3,544 SF TO 7,422 SF AVAILABLE



FEATURES:

- Multiple suites available of flex office/warehouse space!
- Convenient location in Maple Grove along I-494.
- Locally owned and managed building.
- Close to other businesses & MG retail area.

Lease Rate:

Office: \$12.95 / PSF
 Flex: \$9.00 / PSF
 Warehouse : \$6.50 / PSF
 Tax & Cam - \$6.00 / psf

Overview 1
 Aerial Maps 2
 Site Plans / Available Suites . . . 3
 Floor Plan. 4-8

FACTS:

- ▲ Built in 2002
- ▲ Fully-sprinklered
- ▲ 18' Clear Height
- ▲ Suite 104 - 4,162 SF
- Suite 112 - 4,933 SF (Office)
- Suite 130 - 5,168 SF
- Suite 154 - 7,422 SF
- Suite 170 - 3,544 SF



Chad Weeks
 612.619.9911
 cweeks@arrowcos.com



Steve Fischer
 612.619.9991
 sfischer@arrowcos.com

Contact

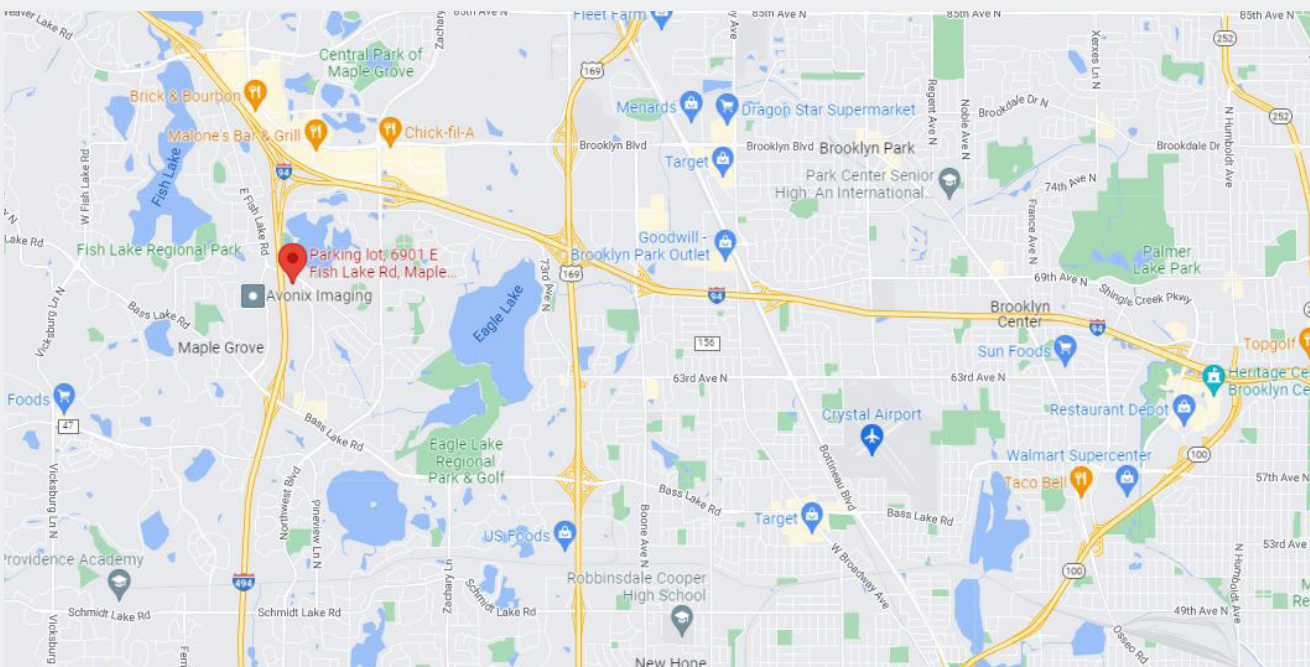
Phone: 763.424.6355
 Fax: 763.424.7980

Arrow Companies
 7365 Kirkwood Court N. Suite 335
 Maple Grove, MN 55369

www.arrowcos.com

AERIAL & MAP

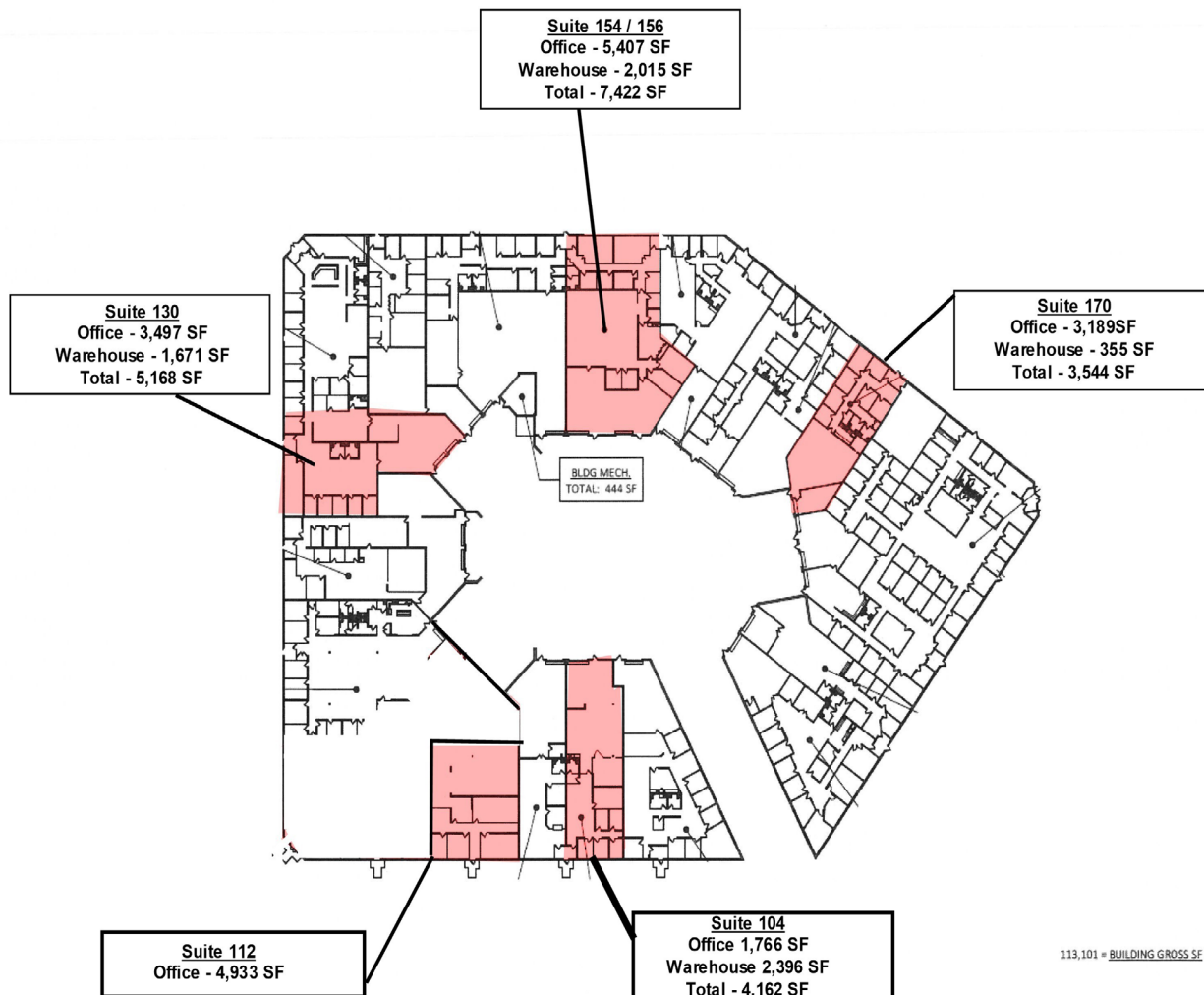
FOR LEASE
3,544 SF TO 7,422 SF AVAILABLE



AVAILABLE SUITES

FOR LEASE
3,544 SF TO 7,422 SF AVAILABLE

SUITE #104	TOTAL 4,162 SF (Office 1,766 SF / Warehouse 2,396 SF)
SUITE #112	TOTAL 4,933 SF (Office 4,933 SF)
SUITE #130	TOTAL 5,168 SF - (Office 3,497 SF / Warehouse 1,671 SF)
SUITE #154 / 156	TOTAL 7,422 SF (Office 5,407 SF / Warehouse 2,015 SF)

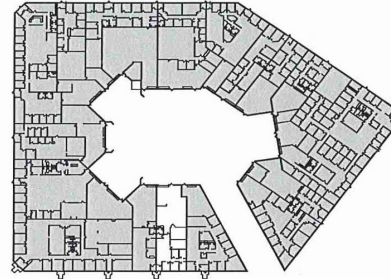
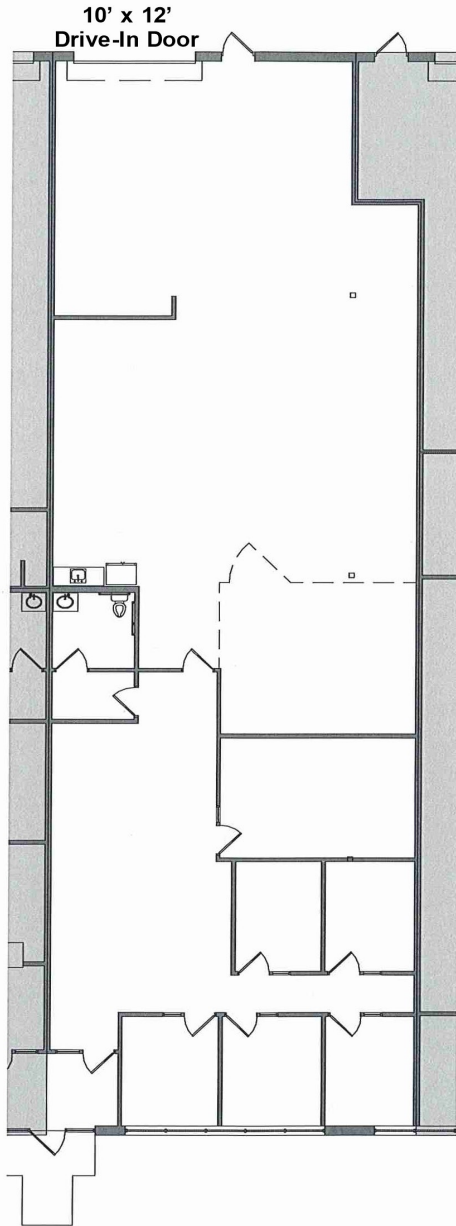




Water Tower Place Business Center
6901 E Fish Lake Road
Maple Grove, MN 55369

**FLOOR PLAN
SUITE 104**

**FOR LEASE
3,544 SF TO 7,422 SF AVAILABLE**



SUITE 104
OFFICE: 1,766 SF
WAREHOUSE: 2,396 SF
TOTAL: 4,162 SF

Contact

Phone: 763.424.6355
Fax: 763.424.7980

Arrow Companies

7365 Kirkwood Court N. Suite 335
Maple Grove, MN 55369

www.arrowcos.com

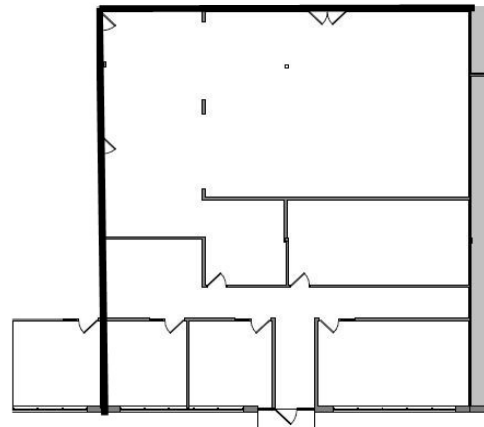
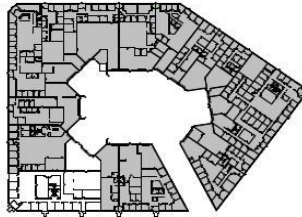


Water Tower Place Business Center
6901 E Fish Lake Road
Maple Grove, MN 55369

**FLOOR PLAN
SUITE 112**

**FOR LEASE
3,544 SF TO 7,422 SF AVAILABLE**

Suite 112
Office: 4,933 SF



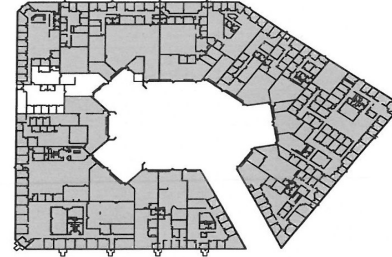
Contact
Phone: 763.424.6355
Fax: 763.424.7980

Arrow Companies
7365 Kirkwood Court N. Suite 335
Maple Grove, MN 55369

www.arrowcos.com

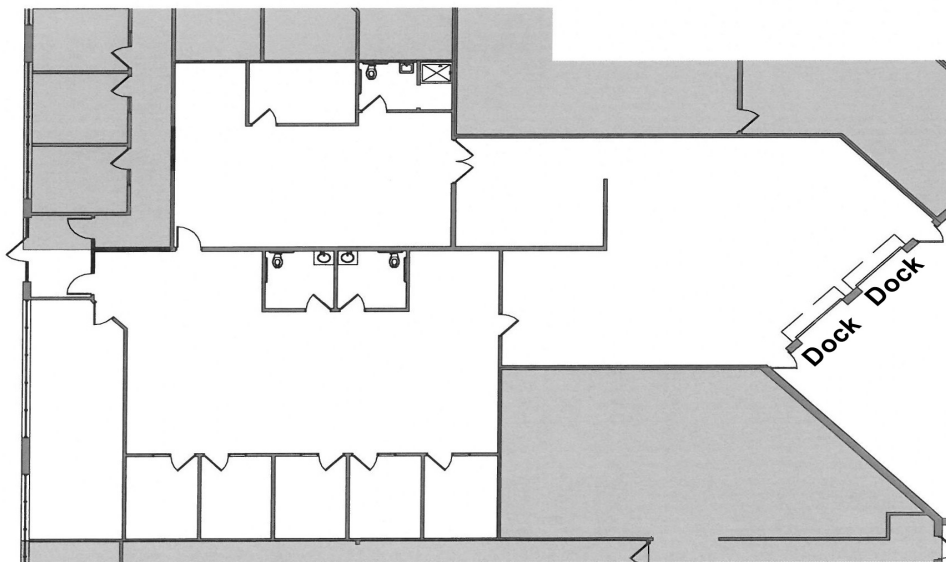
**FLOOR PLAN
SUITE 130**

**FOR LEASE
3,544 SF TO 7,422 SF AVAILABLE**



SUITE 130

OFFICE:	3,497 SF
WAREHOUSE:	<u>1,671 SF</u>
TOTAL:	5,168 SF



Contact

Phone: 763.424.6355
Fax: 763.424.7980

Arrow Companies

7365 Kirkwood Court N. Suite 335
Maple Grove, MN 55369

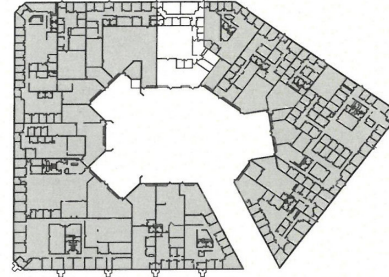
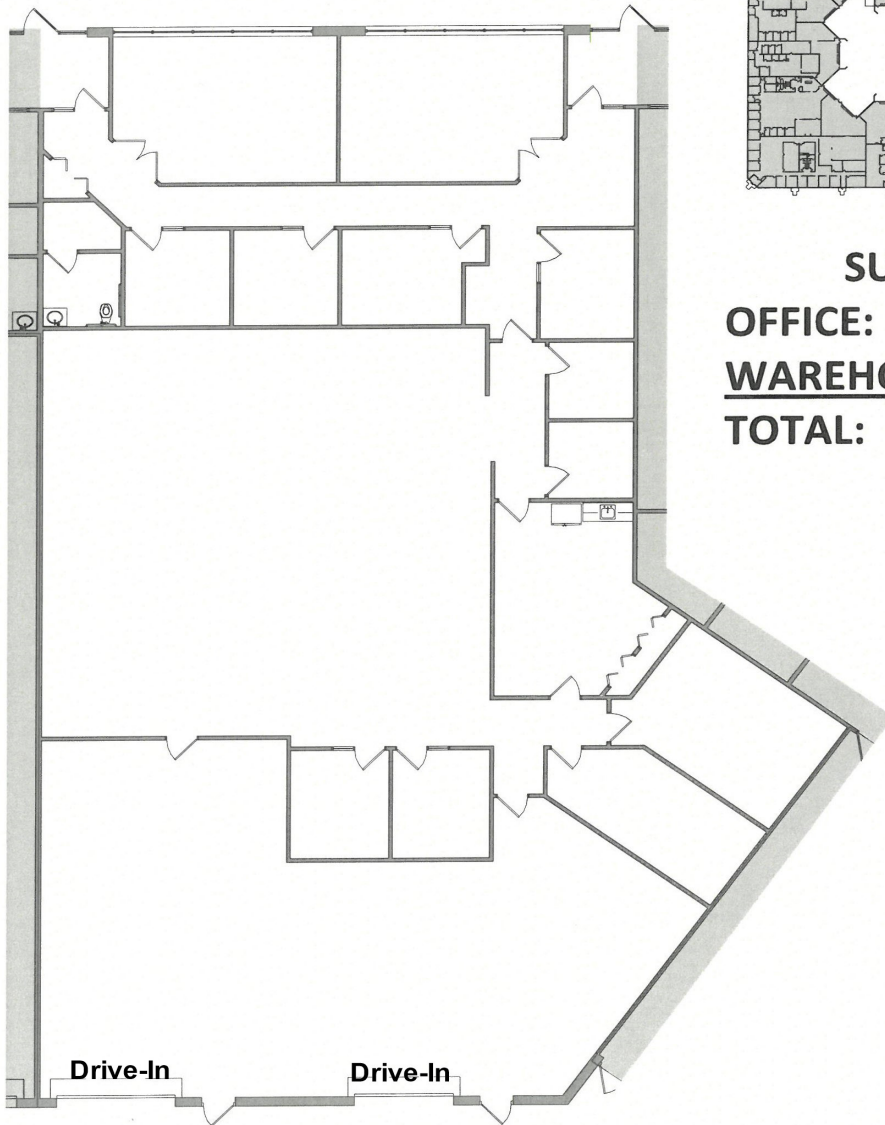
www.arrowcos.com



Water Tower Place Business Center
6901 E Fish Lake Road
Maple Grove, MN 55369

**FLOOR PLAN
SUITE 154**

**FOR LEASE
3,544 SF TO 7,422 SF AVAILABLE**



SUITE 154
OFFICE: 5,407 SF
WAREHOUSE: 2,015 SF
TOTAL: 7,422 SF

Contact
Phone: 763.424.6355
Fax: 763.424.7980

Arrow Companies
7365 Kirkwood Court N. Suite 335
Maple Grove, MN 55369

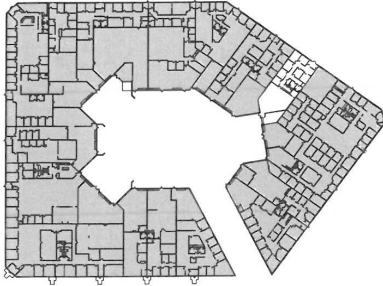
www.arrowcos.com



Water Tower Place Business Center
6901 E Fish Lake Road
Maple Grove, MN 55369

**FLOOR PLAN
SUITE 170**

**FOR LEASE
3,544 SF TO 7,422 SF AVAILABLE**



SUITE 170
OFFICE: 3,189 SF
WAREHOUSE: 355 SF
TOTAL: 3,544 SF



Contact

Phone: 763.424.6355
Fax: 763.424.7980

Arrow Companies

7365 Kirkwood Court N. Suite 335
Maple Grove, MN 55369

www.arrowcos.com



Maple Grove is a flourishing community in the Twin Cities metro area that over 61,000 residents proudly call home. Just twenty minutes from Minneapolis and forty-five minutes from the Minneapolis/St. Paul International Airport, citizens receive every amenity of a large city and the peace and charm of a small town.

Set within the heart of Hennepin County, Maple Grove's vibrant history dates back to the mid 1800s when the Winnebago Indians were settled in the area. Today, over 1,000 businesses operate in this progressive city which offers people quality healthcare, year-round recreational activities, and an excellent standard of living.

Rated high by citizens as a great place to raise children, Maple Grove offers plenty of opportunities for residents to live life to the fullest. Looking for something to do with the family? Look no further than the Maple Grove Community Center which has indoor/outdoor playgrounds, ice skating, indoor/outdoor pools, and picnic area. It is also the site of the Maple Grove Farmers Market where fresh food and fun are in abundance. Check out the many community concerts and family activities at the Town Green. Don't miss the annual Maple Grove Days festivities in July and numerous community events sponsored by local businesses and community organizations.

Maple Grove is also a great place for commerce and has a solid business community in which a number of highly regarded businesses continue to thrive.

Maple Grove has a wide range of housing options available; from rental to charming single family homes to townhouses with scenic views to exciting senior living communities and everything in between. Most of the developments come complete with play areas which are perfect for those with families or looking to start a family. Subdivisions are also within close proximity to multiple shopping and dining options so convenience is something that's around every corner.

Retail developments combine large national retailers along with unique stores that offer a one-of-kind shopping experience. There are also a number of centrally-located areas that offer a wide array of everyday conveniences and shopping options.

In addition, enjoy a variety of eating establishments to choose from: family diners, outdoor casual eateries, upscale dining options — many nationally-known favorites as well as local flavors.

The beauty of seven different lakes can be found within Maple Grove as well as over 1,000 acres and 36 miles of meticulously maintained parks and trails and 48 playgrounds. With the attraction of the Maple Grove Arboretum and two regional park reserves, the outdoor amenities fit every age and interest.

The City of Maple Grove is dedicated to providing high-quality service to its residents, businesses and visitors to make our community one in which we can all enjoy living, working and playing!

Maple Grove...Serving Today, Shaping Tomorrow



Contact

Phone: 763.424.6355
Fax: 763.424.7980

Arrow Companies

7365 Kirkwood Court N. Suite 335
Maple Grove, MN 55369

www.arrowcos.com