

AVAILABLE FOR LEASE

3509 Haworth Dr.

NORTH HILLS PROFESSIONAL PARK



Welcome to North Hills Professional Park. Offering a wide range of office and retail space. Conveniently located off Six Forks Rd in North Hills, walking distance from shopping and restaurants.

PROPERTY HIGHLIGHTS

- Easy access to the beltline
- Ample parking
- Walking distance to North Hills
- **Lease Rate: \$26.50 - \$30**

CONTACT

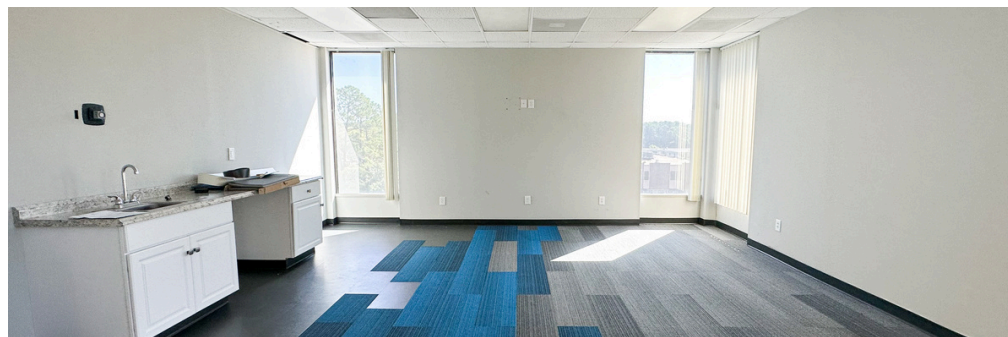
Tyler Christensen, Broker
(C) 828.999.9459
tchristensen@atlasstark.
com

Availability

457-3,834 SQ. FT.

ATLAS  STARK

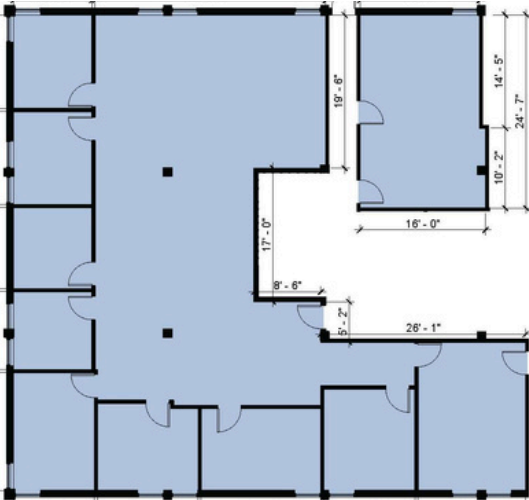
ADDRESS	Suite	SIZE
3509 Haworth Dr	Suite 105	3,834 SF
3509 Haworth Dr	Suite 207	2,024 SF
3509 Haworth Dr	Suite 305	2,234 SF
3509 Haworth Dr	Suite 306	457 SF
3509 Haworth Dr	Suite 400	3,306 SF
3509 Haworth Dr	Suite 403	1,164 SF



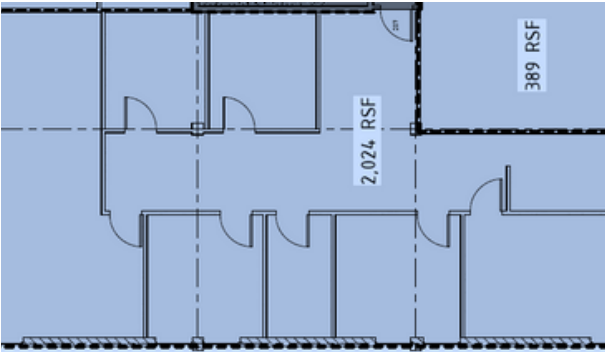
Floorplans



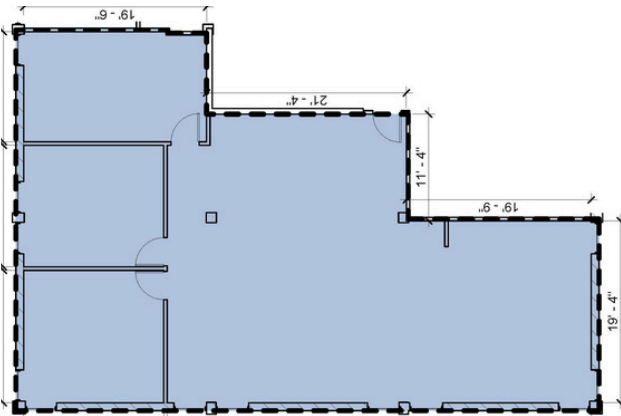
Suite 105: 3,834 SQ. FT.



Suite 207: 2,024 SQ. FT.

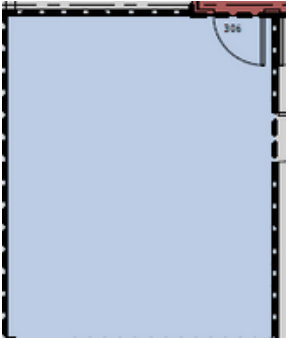


Suite 305: 2,234 SQ. FT.

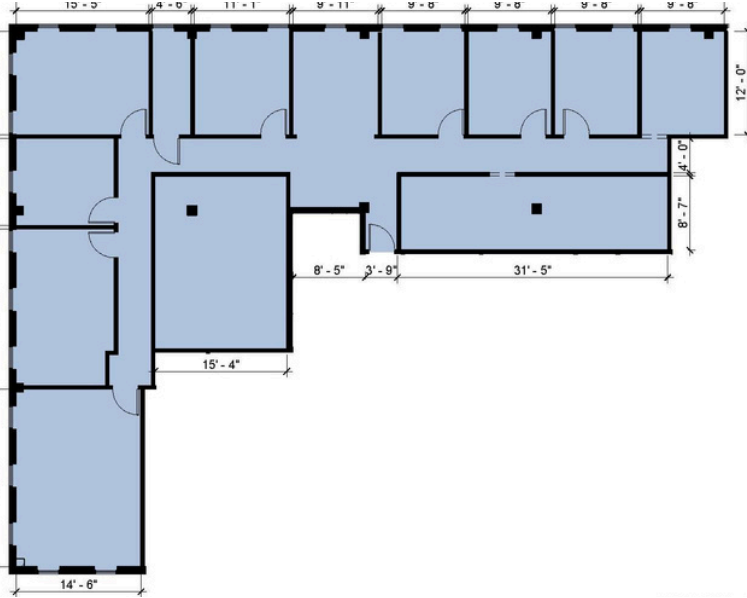


Floorplans

Suite 306: 457 SQ. FT.



Suite 400: 3,306 SQ. FT.



Suite 403: 1,164 SQ. FT.

