

FOR SALE | \$11,158,560 (\$270 / SF)



Freeway Visibility

DAUM
COMMERCIAL REAL ESTATE SERVICES



1609-1611 E. 15th Street | Los Angeles, CA

First Time on Market in 50+ Years Rare, Fully Refurbished Industrial Building 2025
Building Size: ±41,328 SF | 10 Freeway Visibility | Lot Size: ±50,268 SF

**FOR MORE INFORMATION,
PLEASE CONTACT:**

BRYAN ABAYAN | ASSOCIATE VICE PRESIDENT

D: 310.883.8476
BABAYAN@DAUMCRE.COM
CADRE #02005294

JEFF THOMPSON, REALTOR | VICE PRESIDENT

P: 213.270.2238
JTHOMPSON@DAUMCRE.COM
CADRE #00833131

Property Overview

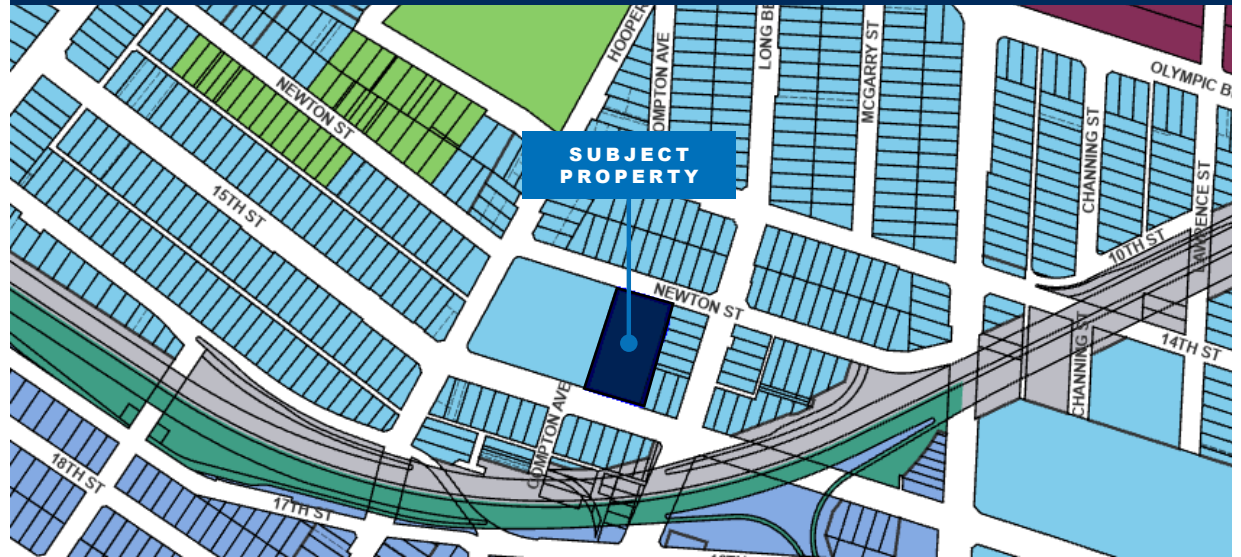
1609-1611 E. 15th Street | Los Angeles | CA

Property Details

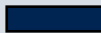
Year Built:	1974
Building Area:	±41,328 SF
Lot Size:	±50,268 SF
Office Size:	±2,300 SF
Loading:	2 DH, 3 GL
Ceiling Clearance:	20'
Sprinklers:	Yes
Parking Spaces:	31
APN:	5130-019-032
Zone:	M2
Construction:	Masonry



Zoning Map

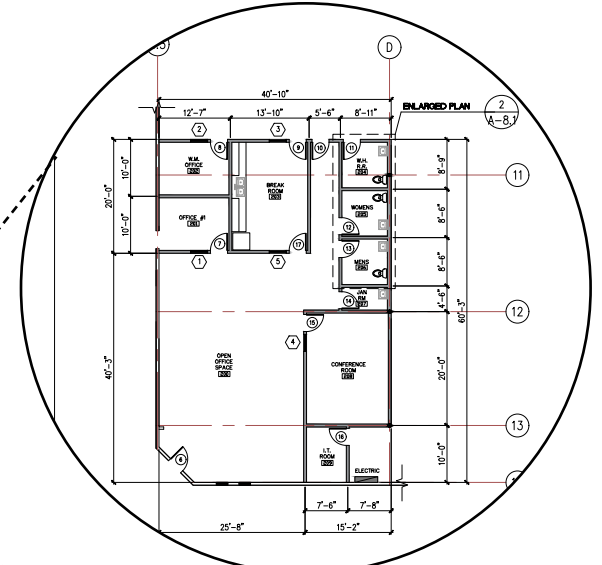
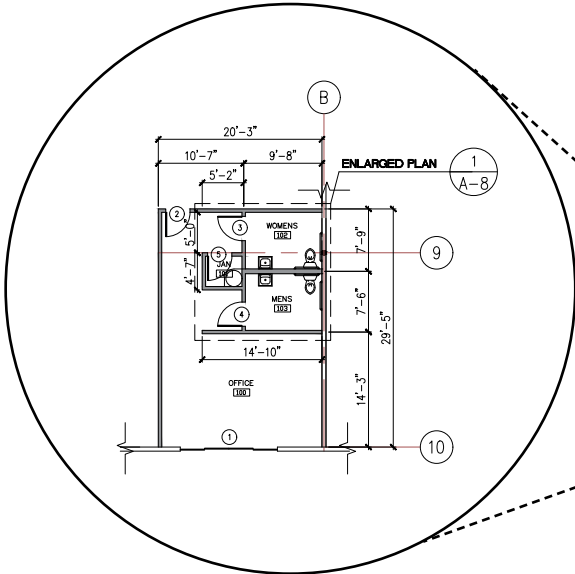
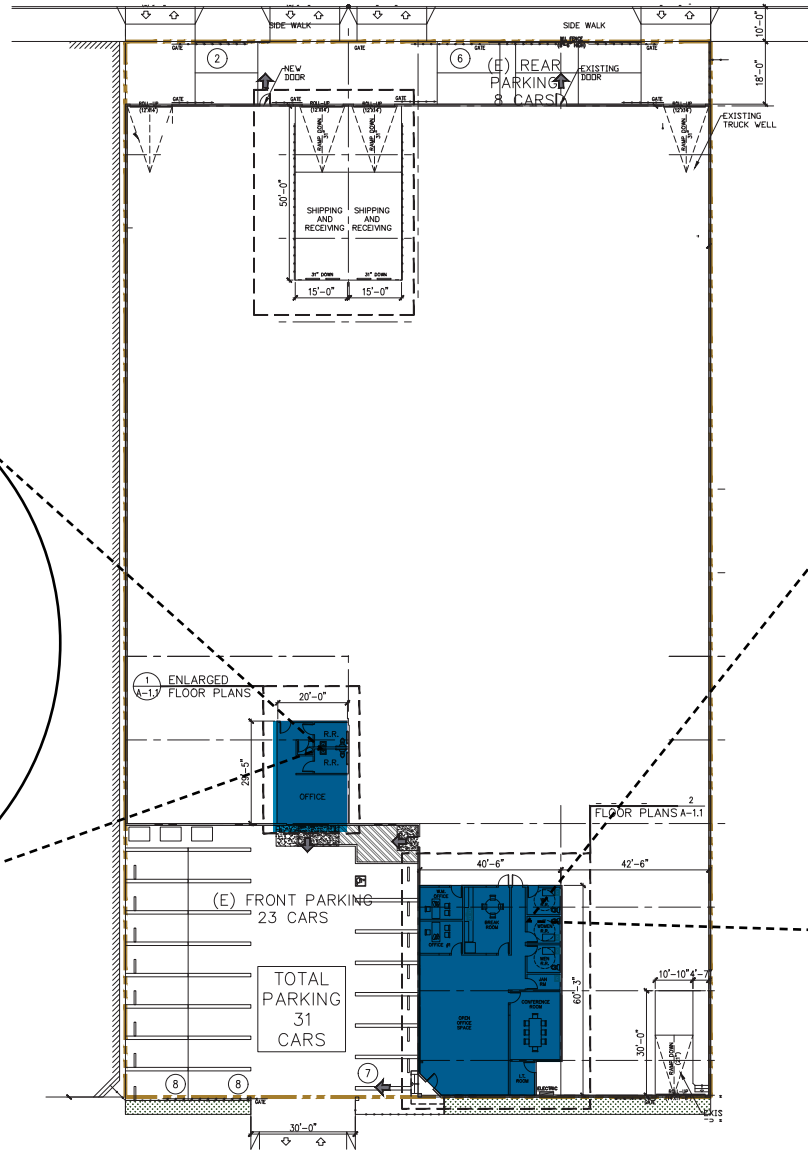


ZONING MAP LEGEND:

 Subject Property

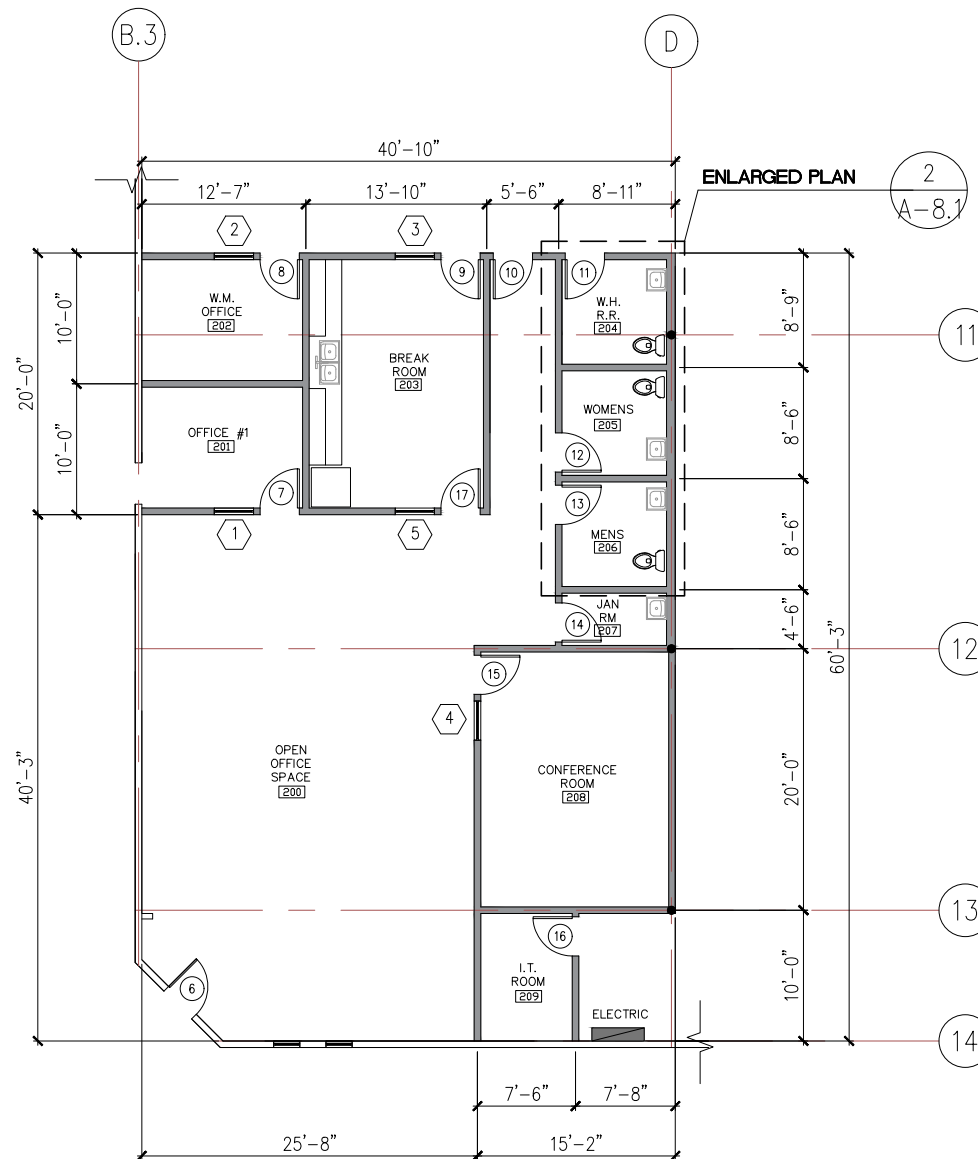
 Limited Industrial

Existing Site Plan



*NOT TO SCALE

Floor Plan



*NOT TO SCALE

Photos



Entrance



Offices and Restrooms



Kitchenette



Ramp, DH Loading

Photos



Warehouse



Warehouse



Parking Lot



Parking Lot

Photos



Exterior



Ground Level Loading



Side View



Skyline View





FOR SALE | \$11,158,560 (\$270 / SF)

1609-1611 E. 15th Street | Los Angeles, CA

**FOR MORE INFORMATION,
PLEASE CONTACT:**

BRYAN ABAYAN | ASSOCIATE VICE PRESIDENT
D: 310.883.8476
BABAYAN@DAUMCRE.COM
CADRE #02005294

JEFF THOMPSON, REALTOR | VICE PRESIDENT
P: 213.270.2238
JTHOMPSON@DAUMCRE.COM
CADRE #00833131