

# RESTAURANT SPACE AVAILABLE FOR SUBLEASE

# TANGLED ROOTS BREWERY

100 W HIGGINS RD Q1 | SOUTH BARRINGTON, IL



9450 WEST BRYN MAWR AVENUE | SUITE 550 | ROSEMONT, IL 60018  
773.355.3000 (main) | [www.lee-associates.com](http://www.lee-associates.com)

**MICHAEL PETRIK | Senior Associate**  
[mpetrik@lee-associates.com](mailto:mpetrik@lee-associates.com) | 773.355.3048

All information furnished regarding property for sale, rental or financing is from sources deemed reliable, but no warranty or representation is made to the accuracy thereof and same is submitted to errors, omissions, change of price, rental or other conditions prior to sale, lease or financing or withdrawal without notice. No liability of any kind is to be imposed on the broker herein.

# PROPERTY HIGHLIGHTS



6,012 SF restaurant available for sublease.



In the heart of The Arboretum of South Barrington, at the intersection of Higgins Rd and Route 59, surrounded by premier retail, dining, entertainment, and an affluent customer base.



Neighboring businesses include:  
Sephora  
Soma  
EVEREVE  
Chico's  
DSW  
White House Black Market



Higgins Rd: 28,288 VVP  
IL 59: 17,332 VPD

12 minutes away from Barrington Public Transportation Station



Barrington Square Mall: 3.4 miles away  
Huntington Plaza Shopping Center: 5.4 miles away

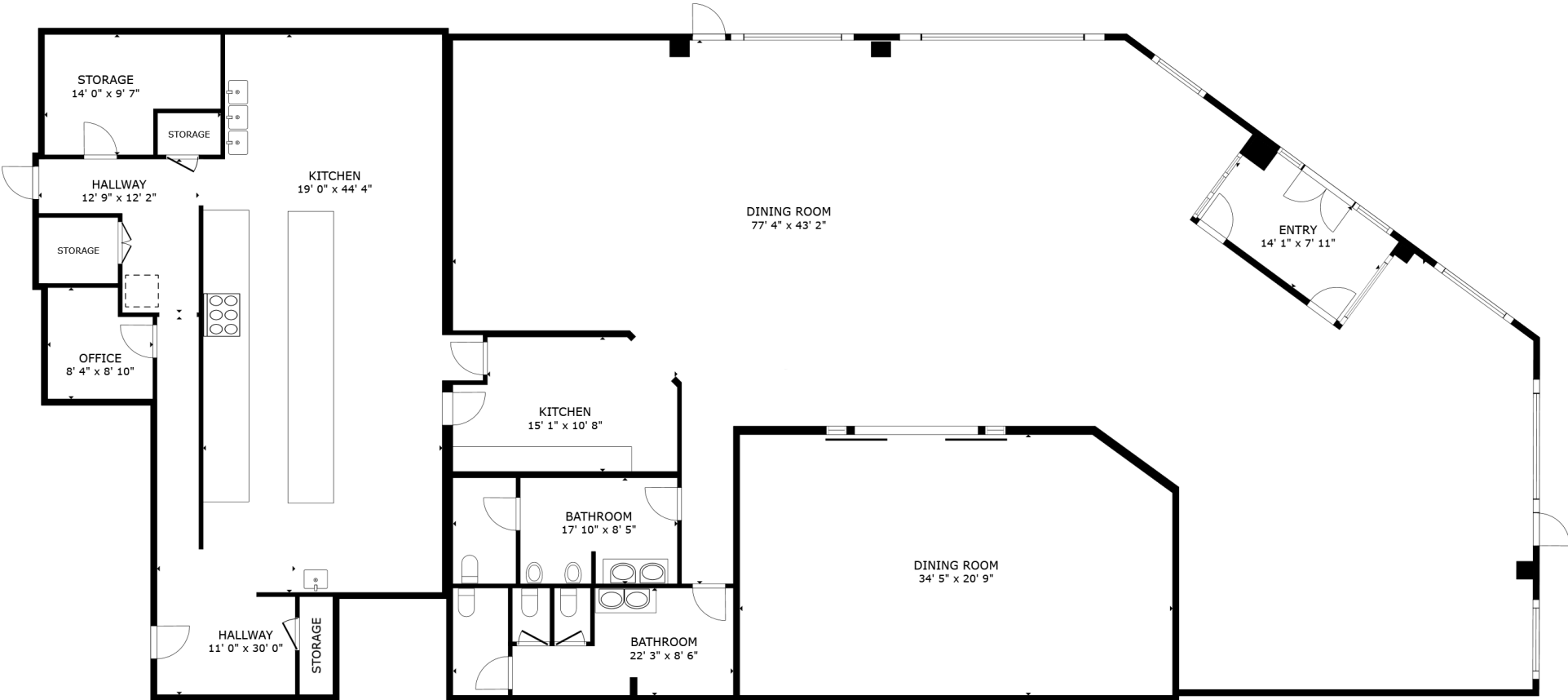
	1 MILE	3 MILES	5 MILES
<b>ESTIMATED POPULATION</b>	871	17,436	156,227
<b># OF HOUSEHOLDS</b>	291	6,185	54,755
<b>HOUSEHOLD INCOME</b>	\$312,959	\$194,406	\$139,975
<b>DAYTIME POPULATION</b>	5,360	20,076	87,275

[CLICK HERE TO VIEW FULL DEMOGRAPHICS REPORT](#)

# PHOTOS



# FLOOR PLAN



FLOOR PLAN

# RETAILER AERIAL



# SITE PLAN



# DEMOGRAPHICS



1 MILE

3 MILES

5 MILES

**871**

Estimated  
Population

**17,436**

Estimated  
Population

**156,227**

Estimated  
Population

**291**

Number of  
Households

**6,185**

Number of  
Households

**54,755**

Number of  
Households

**\$312,959**

Household  
Income

**\$194,406**

Household  
Income

**\$139,975**

Household  
Income

**5,360**

Daytime  
Population

**20,076**

Daytime  
Population

**87,275**

Daytime  
Population



[CLICK HERE TO VIEW FULL DEMOGRAPHICS REPORT](#)

# CONTACT

---

**MIKE PETRIK**

**Senior Associate**

mpetrik@lee-associates.com

D 773.355.3048



---

COMMERCIAL REAL ESTATE SERVICES