

63

WALL STREET

SOUTH BLOCK BETWEEN
PEARL & HANOVER STREETS



SIZE: GROUND: 1,049 SF
BASEMENT: 687 SF

FRONTAGE: 36'

CEILING HEIGHT: 12'

POSSESSION: IMMEDIATE

HIGHLIGHTS:

- › LAST AVAILABLE SPACE ON WALL STREET AMONGST FIDI'S BEST RETAIL AND FAST CASUAL LINEUP
- › AT THE BASE OF LUXURY RESIDENTIAL BUILDING WITH 807 UNITS
- › TYPE 2 VENTING CONSIDERED
- › FLAG SIGNAGE AVAILABLE
- › DIVISIONS CONSIDERED

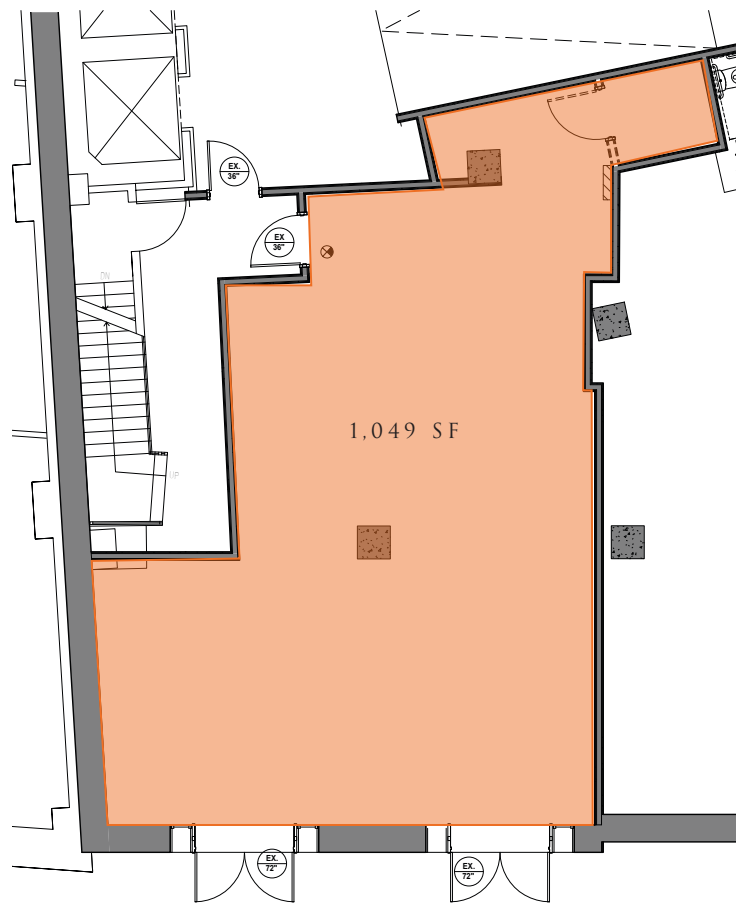
TRANSPORTATION: 2 3 4 5 J Z

NEIGHBORHOOD TENANTS:

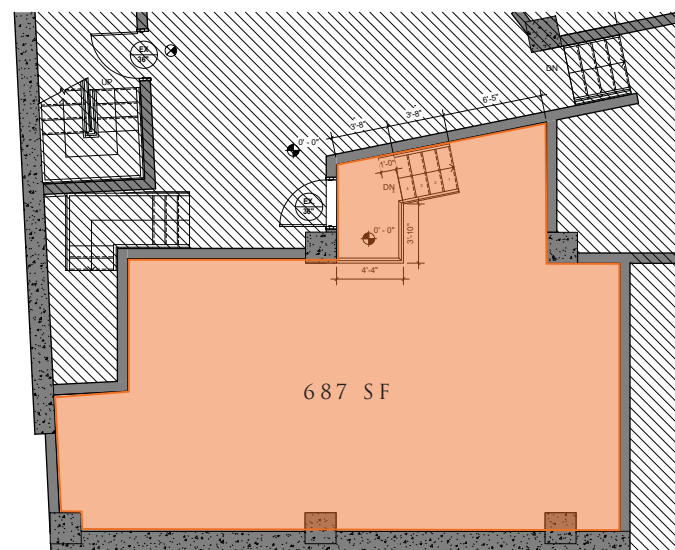


FLOOR PLANS:

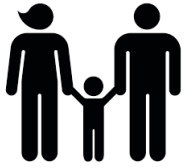
GROUND FLOOR



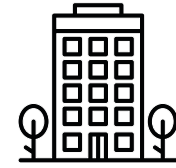
BASEMENT



NEIGHBORHOOD DEMOGRAPHICS



POPULATION:
42,783



TOTAL
OFFICE SF:
63,393,841



DAYTIME
POPULATION:
246,152



NUMBER OF
HOTEL ROOMS:
7,303

63

WALL STREET

THE HEART OF
THE FINANCIAL DISTRICT

FOR MORE INFORMATION,
PLEASE CONTACT:

BRANDON BERGER

646.236.8525 | BBerger@ksrny.com

ZACH NATHAN

240.731.8333 | ZNathan@ksrny.com

HILA BENSOSHAN

215.500.5682 | HBenshoshan@ksrny.com

