



# CLASS A OFFICE SPACE 444 EXECUTIVE CENTER BLVD. EL PASO-WEST/CENTRAL



## PROPERTY HIGHLIGHTS

- Two Story Office Building with 43,389 SF of Office Space
- Minutes from Downtown El Paso with Frontage on Executive Center Blvd.
- All Inclusive Utilities
- HUB Zone Certified for Tenants with Government Clients
- Free, Ample Building Adjacent Parking
- Janitorial: General Cleaning & Trash Service Available
- Signage: Suite & Directory, with Additional Building & Road Signage Available
- State of the Art, Computerized Heating (Gas) & Cooling (Refrigerated) Systems Controlled by Management Office at a Comfortable Setting

## ON-SITE PROPERTY MANAGEMENT & MAINTENANCE

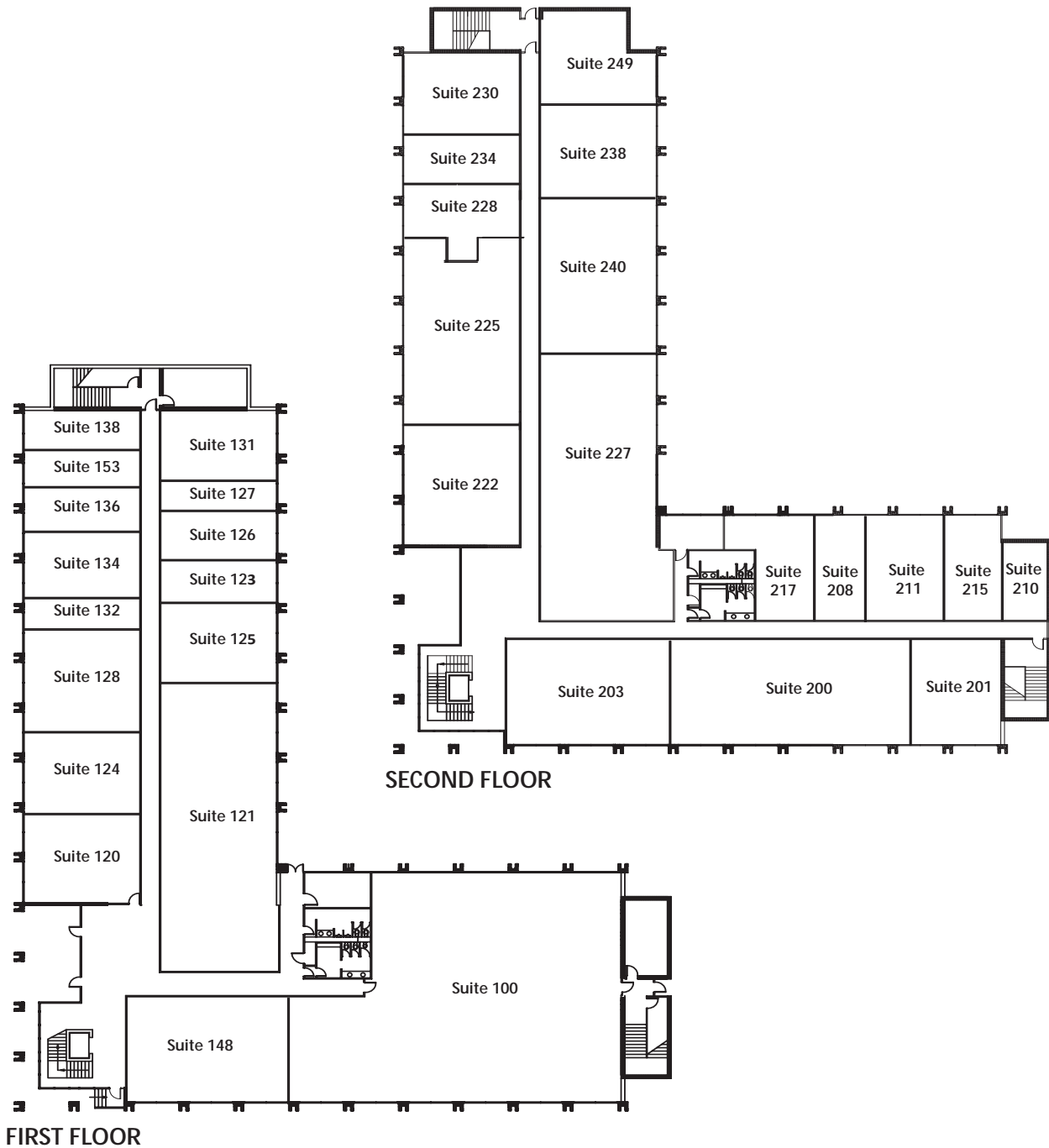
- Full staff of qualified professional personnel to maintain the interior and exterior areas of the building
- 24 hour answering service available for emergencies

## NEWLY UPDATED COMMON AREA





CLASS A OFFICE SPACE  
**444 EXECUTIVE CENTER BLVD.**  
EL PASO-WEST/CENTRAL





## SUITE 121

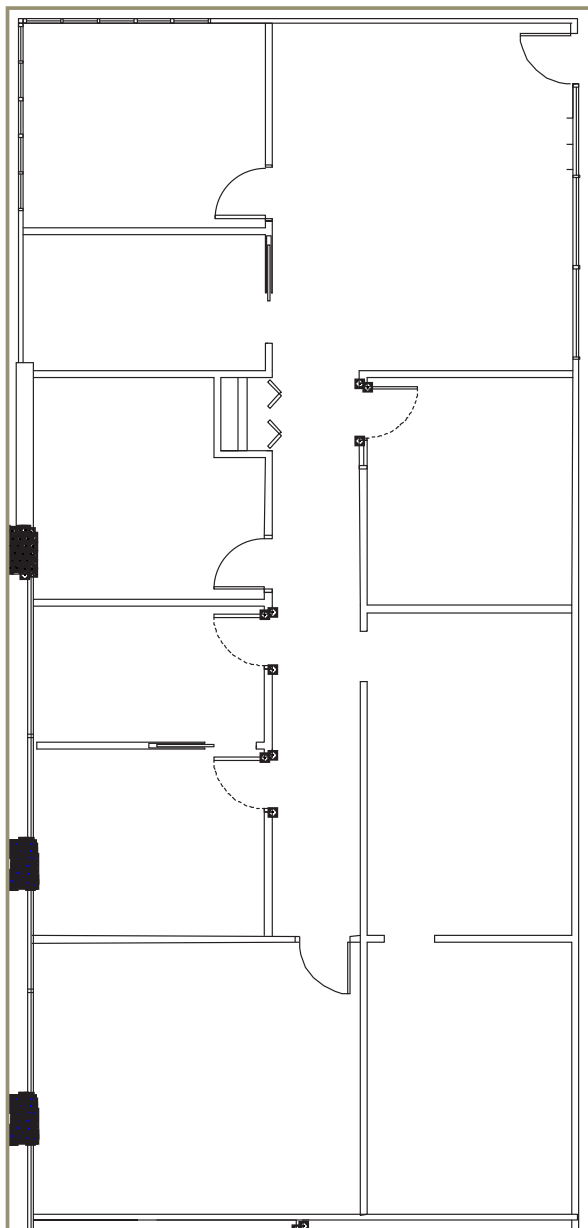
444 Executive Center Blvd., EL PASO-WEST/CENTRAL

**IMMEDIATELY  
AVAILABLE FOR LEASE  
APPROX. 2,860 RSF  
PROFESSIONAL OFFICE**



### CLASS A OFFICE SPACE

- High Visibility with Entrance in Main Lobby from Executive Center Blvd.
- Updated Reception with Custom, Built-in Reception
- Multiple Large Private Offices/ Meeting Spaces
- Employee Break Area
- Lots of Storage
- Large Windows with Great View



EP SHALOM MANAGEMENT, LLC  
444 EXECUTIVE CENTER BLVD., SUITE 120, EL PASO, TX 79902  
T 915-532-3456 F 915-532-3458

[www.epleasing.com](http://www.epleasing.com)  
[info@epleasing.com](mailto:info@epleasing.com)