 **JLL** SEE A BRIGHTER WAY

# For lease

One Batterymarch Park  
Quincy, Massachusetts  
±46,318 RSF of Office Space Available

# Property features

Batterymarch Park is a four-building, 50-acre first-class office park located at the strategic intersection of the Southeast Expressway, Routes 3 and 128 in Quincy, Massachusetts. The park is owned and managed by the National Fire Protection Association, which is headquartered at 1 Batterymarch Park. The park is only 15 minutes from Boston, with free parking and shuttle service to and from the Quincy Center MBTA Station and features panoramic views of downtown Boston, Quincy Bay and the Blue Hills.

## Park amenities



Fitness center



Conference center



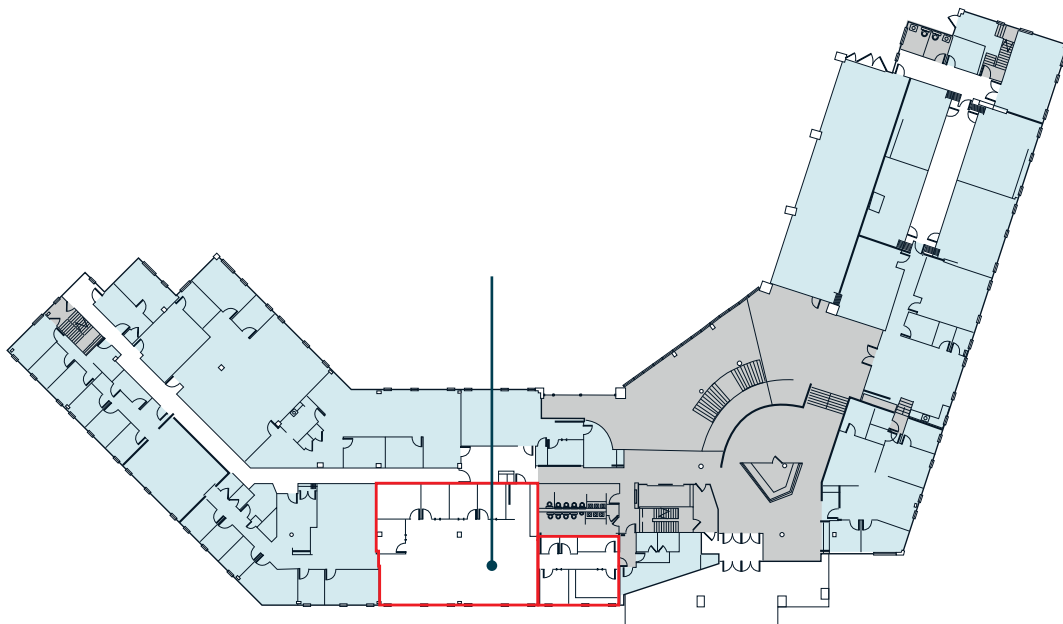
Cafe



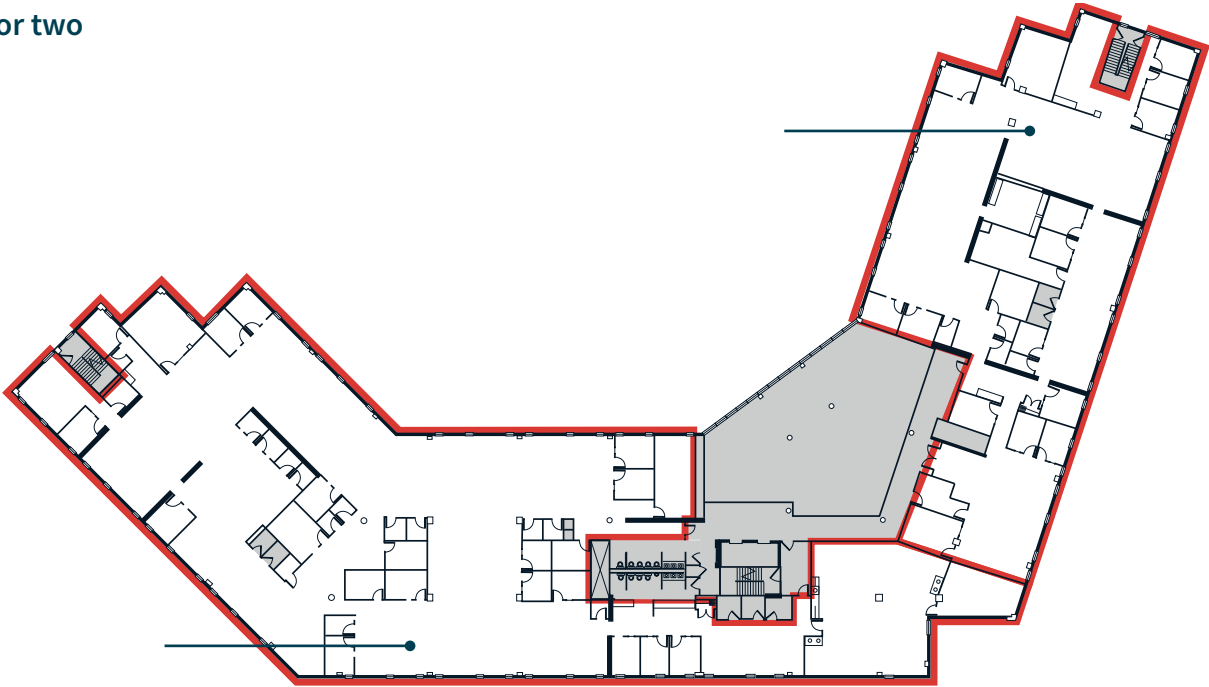
Shuttle

<b>Total SF</b>	152,096 SF
<b>Year built</b>	1981
<b>Available space</b>	1st floor: 807 - 3,764 SF 2nd floor: 12,921 - 35,047 SF 3rd floor: 1,197 - 5,464 SF 3rd floor: 2,043 SF
<b>Parking</b>	3.0 per 1,000 SF

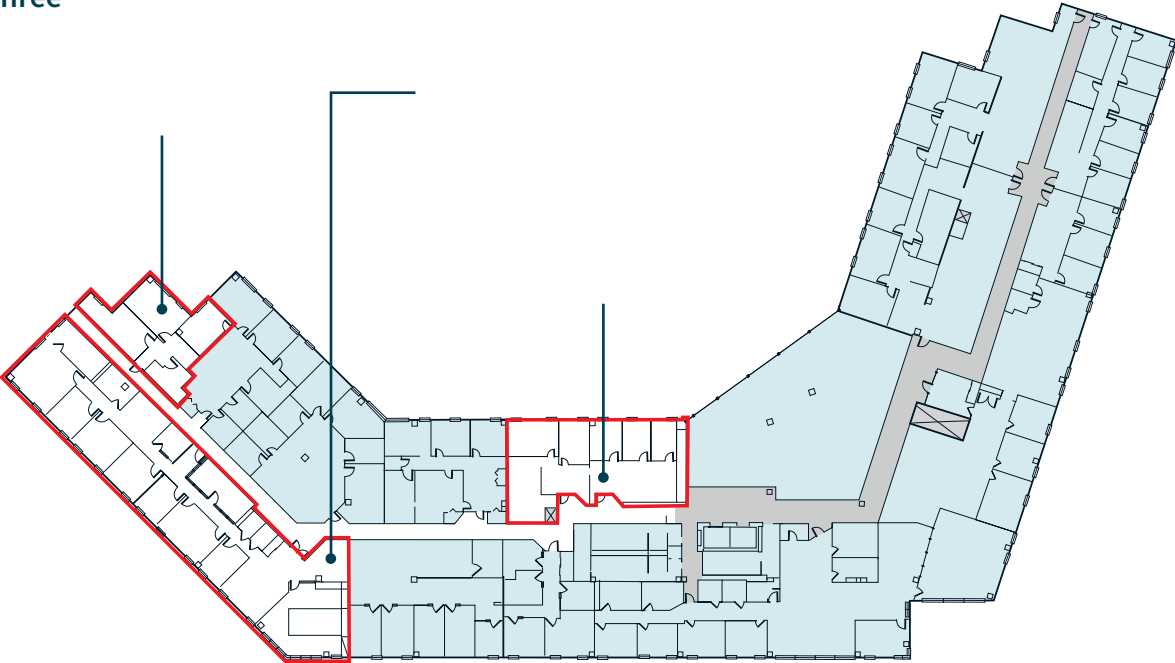
## Floor one



Floor two



Floor three





**JLL**

**Nat Kessler**  
 Managing Director  
 nat.kessler@jll.com  
 +1 617 686 8381

**Tom Kent**  
 Senior Managing Director  
 tom.kent@jll.com  
 +1 617 531 4224

**Sean Lynch**  
 Managing Director  
 sean.lynch@jll.com  
 +1 617 316 6488

**Michael Keenan**  
 Vice President  
 michael.keenan@jll.com  
 +1 617 316 6424

**About JLL**

Although information has been obtained from sources deemed reliable, JLL does not make any guarantees, warranties or representations, express or implied, as to the completeness or accuracy as to the information contained herein. Any projections, opinions, assumptions or estimates used are for example only. There may be differences between projected and actual results, and those differences may be material. JLL does not accept any liability for any loss or damage suffered by any party resulting from reliance on this information. If the recipient of this information has signed a confidentiality agreement with JLL regarding this matter, this information is subject to the terms of that agreement. ©2025 Jones Lang LaSalle Brokerage, Inc. All rights reserved.