

SKYWAY CIRCLE TECH CENTER

FOR LEASE • 6,687 – 10,854 SF



3130 – 3136 SKYWAY CIRCLE S.
IRVING, TEXAS 75038



JASON FINCH

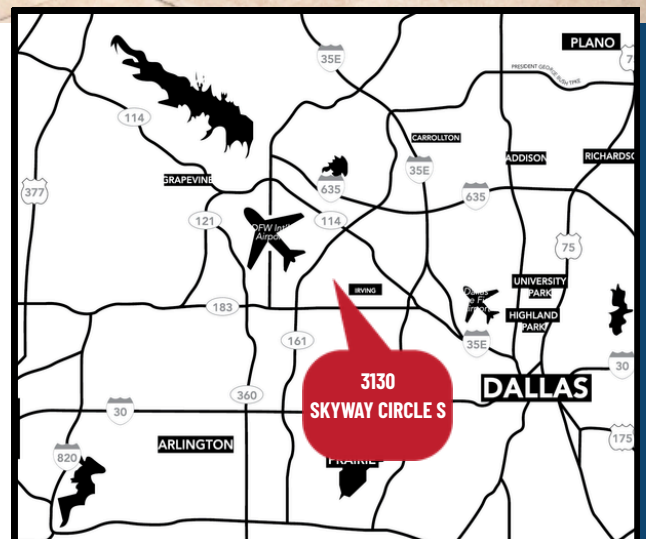
972.948.8262

jason@richyoungcompany.com

RICH YOUNG, JR. | SIOR

214.563.1707

richjr@richyoungcompany.com



SKYWAY CIRCLE TECH CENTER

FOR LEASE • 6,687 – 10,854 SF



Property Highlights

- +/- 19' Clear Height
- Class A Finishes
- Heavy Parking Available
- Front-Park Rear-Load
- Minutes from DFW Airport

Available Spaces:

3130 Skyway Circle S.

- 10,854 Square Feet
- (1) Dock-High Door (ability to add more)
- 100% Air-Conditioned
- End-Cap Space

3136 Skyway Circle S.

- 6,687 Square Feet
- (3) Dock-High Door (ability to add ramp)
- Ownership open to layout changes
- End-Cap Space

JASON FINCH

972.948.8262

jason@richyoungcompany.com

RICH YOUNG, JR. | SIOR

214.563.1707

richjr@richyoungcompany.com

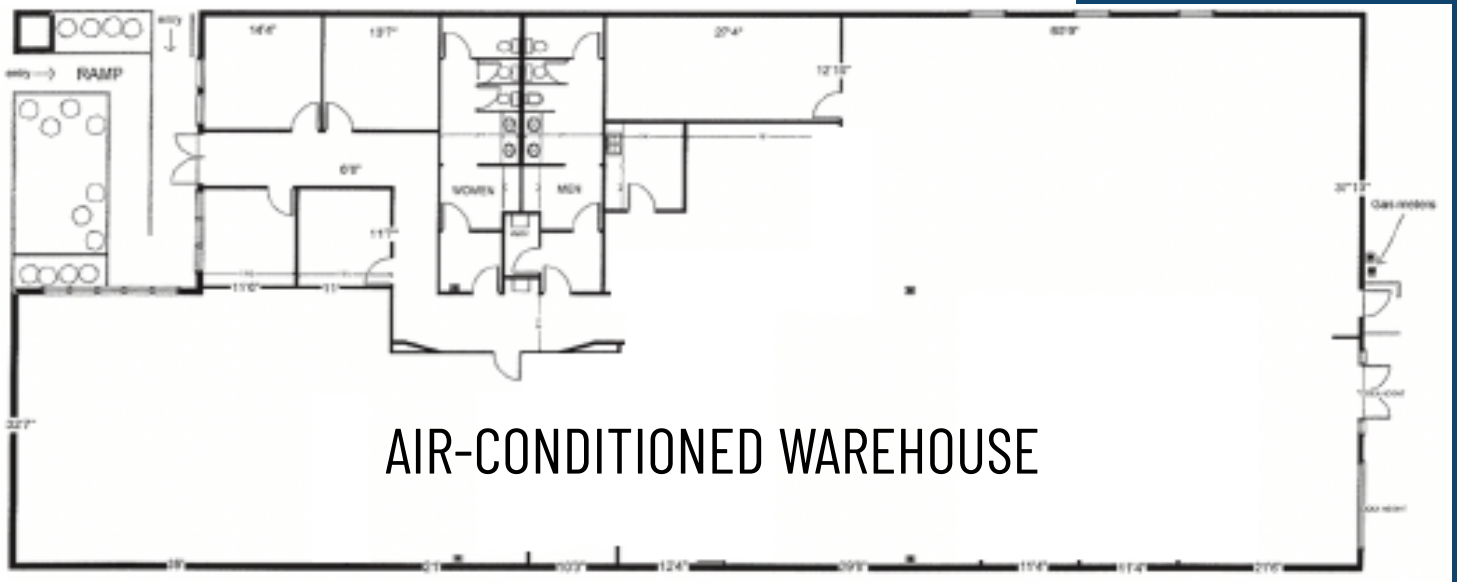


SKYWAY CIRCLE TECH CENTER

FOR LEASE • 6,687 – 10,854 SF



3130 Skyway Circle S. - 10,854 SF



JASON FINCH

972.948.8262

jason@richyoungcompany.com

RICH YOUNG, JR. | SIOR

214.563.1707

richjr@richyoungcompany.com

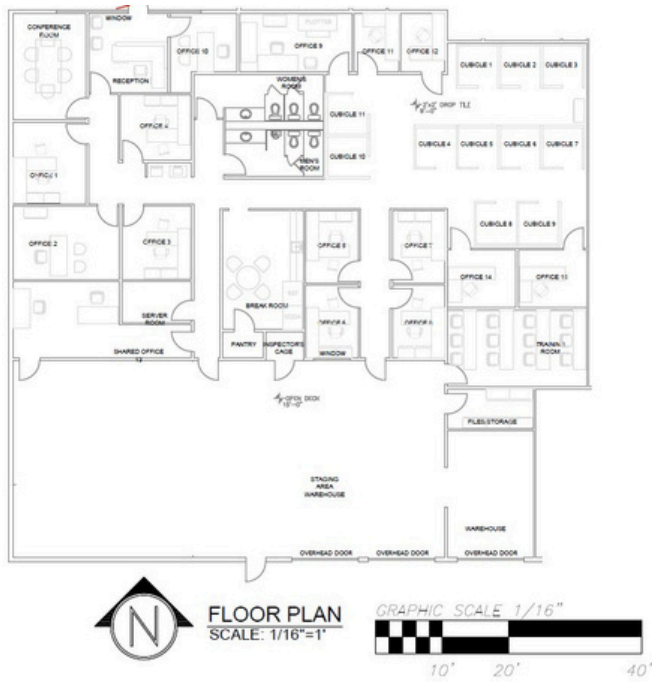


SKYWAY CIRCLE TECH CENTER

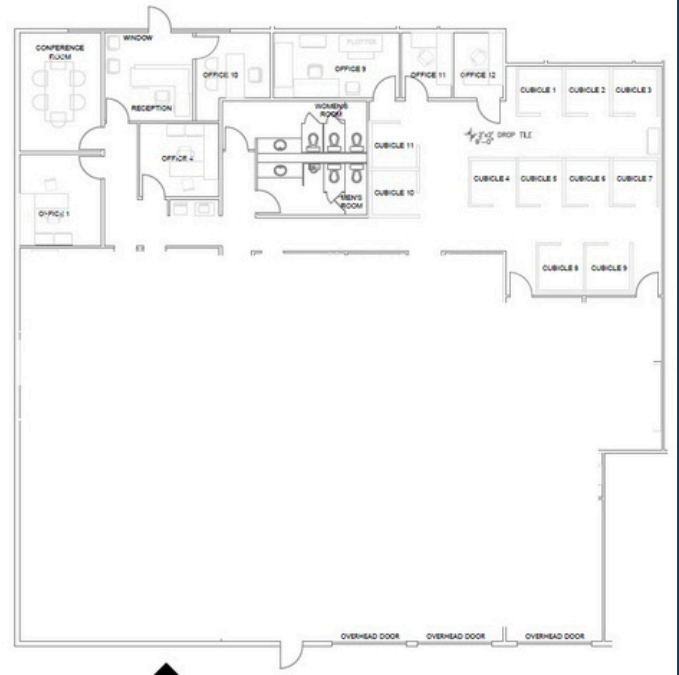
FOR LEASE • 6,687 – 10,854 SF



EXISTING FLOOR PLAN



PROPOSED FLOOR PLAN



JASON FINCH

972.948.8262

jason@richyoungcompany.com

RICH YOUNG, JR. | SIOR

214.563.1707

richjr@richyoungcompany.com



SKYWAY CIRCLE TECH CENTER

FOR LEASE • 6,687 – 10,854 SF



JASON FINCH

972.948.8262

jason@richyoungcompany.com

RICH YOUNG, JR. | SIOR

214.563.1707

richjr@richyoungcompany.com

