

LAYOUT PAGE TABLE			
LABEL	TITLE	DESCRIPTION	COMMENTS
P-1	PROJECT OVERVIEW		



REVISION TABLE	
NUMBER	DATE

DOC #: 303801\_19

**BANKS STATION  
UNIT 19**

GaelCom, Inc.  
4220 Itchenockeassa Blvd.,  
Lakeland, FL 33810  
Tel: (224) GAELCOM

DATE:

01/12/17

SQ. FT.

3,420

SHEET:

**P-1**



VIEW ALL IMAGES

**GALLERY**

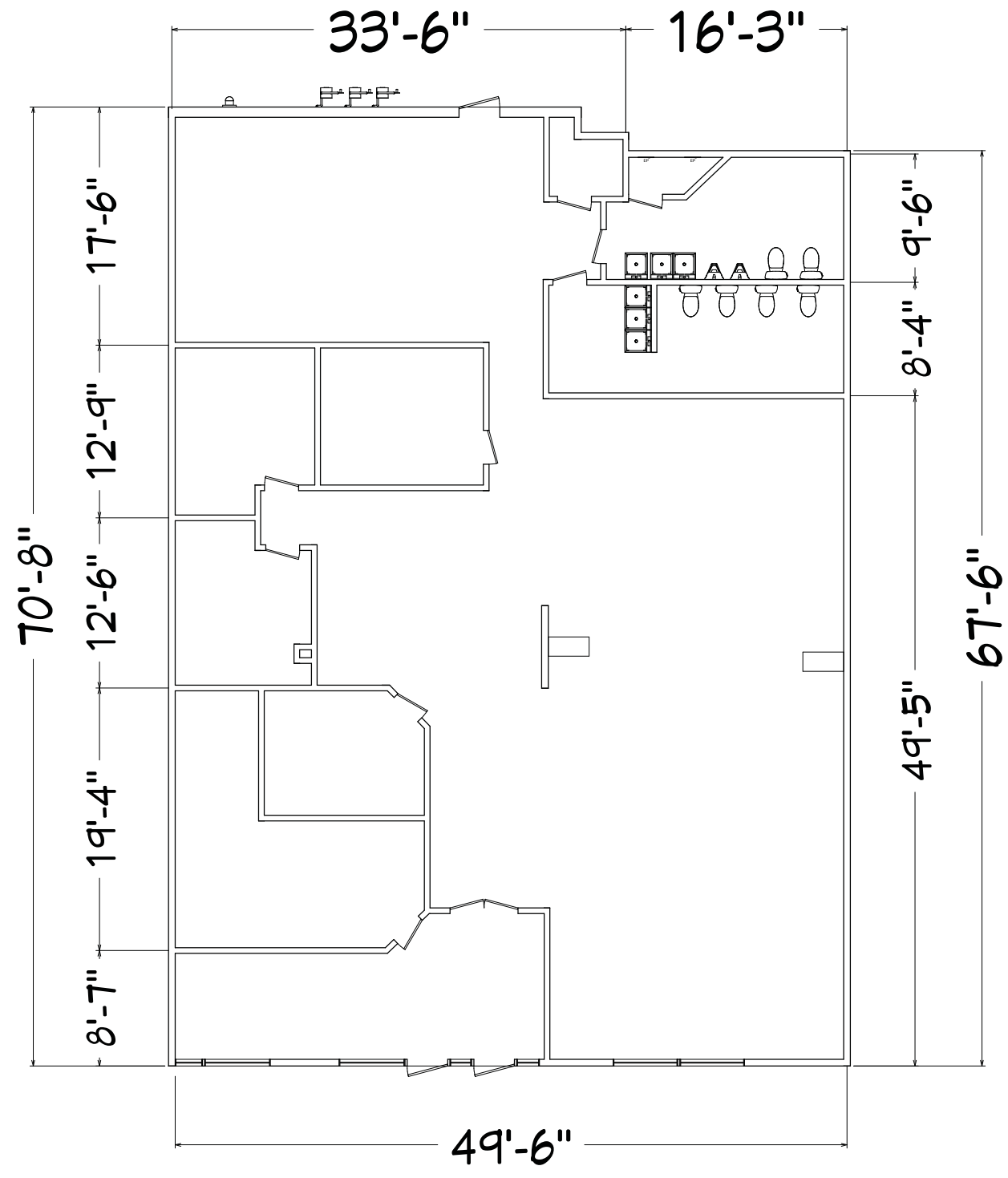
CLICK HERE FOR

**DWG FILE**

CLICK HERE FOR

**DWG FILE**

with datapoints



1st Floor



REVISION TABLE	
NUMBER	DATE

DOC #: 303801\_19

**BANKS STATION  
UNIT 19**

GaelCom, Inc.  
4220 Itchenockeassa Blvd.,  
Lakeland, FL 33810  
Tel: (224) GAELCOM

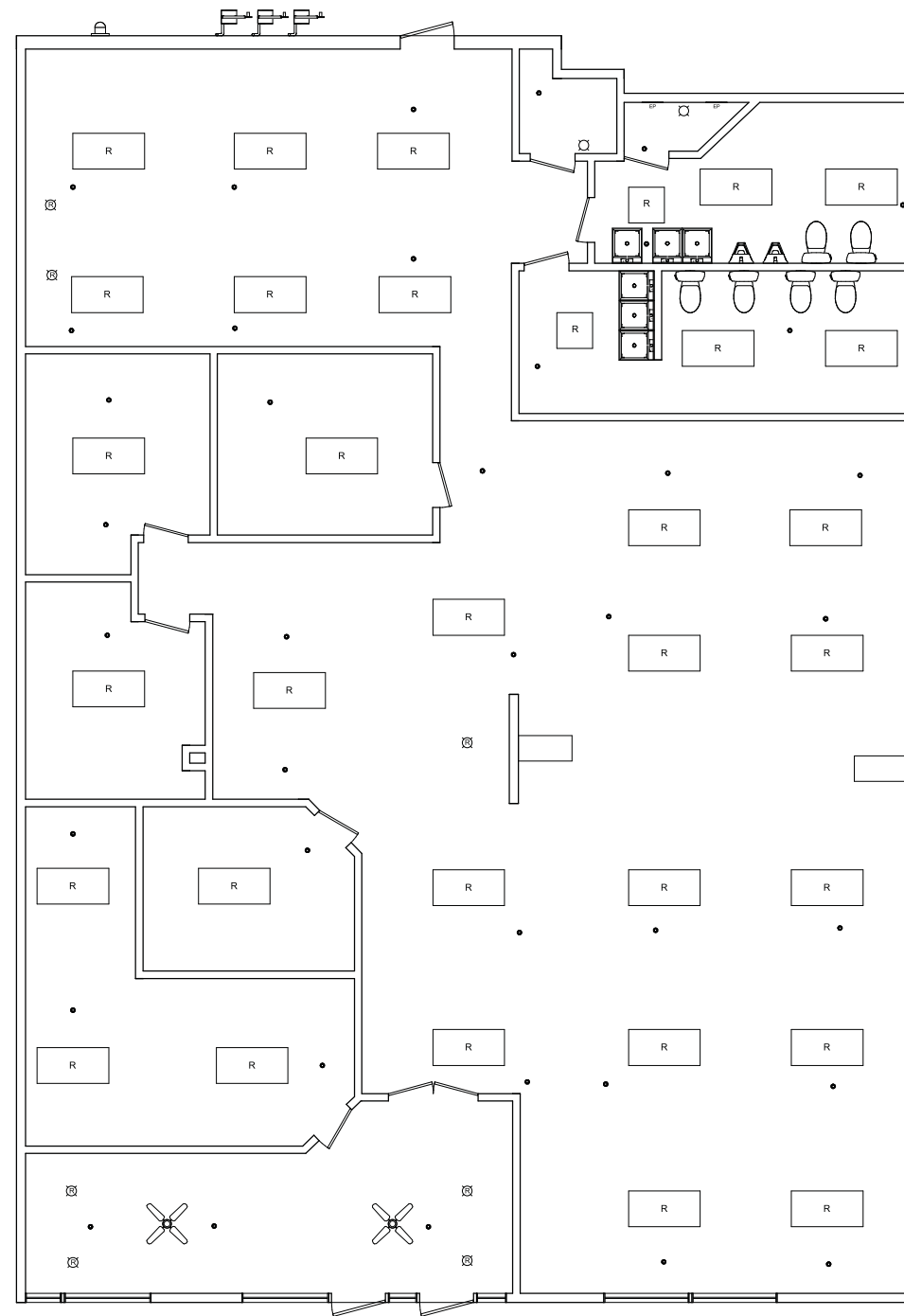
DATE:

01/12/17

SQ. FT.

3,420

SHEET:



1st Floor



REVISION TABLE	
NUMBER	DATE

DOC #: 303801\_19

**BANKS STATION  
UNIT 19**

GaelCom, Inc.  
4220 Itchenockeassa Blvd.,  
Lakeland, FL 33810  
Tel: (224) GAELCOM

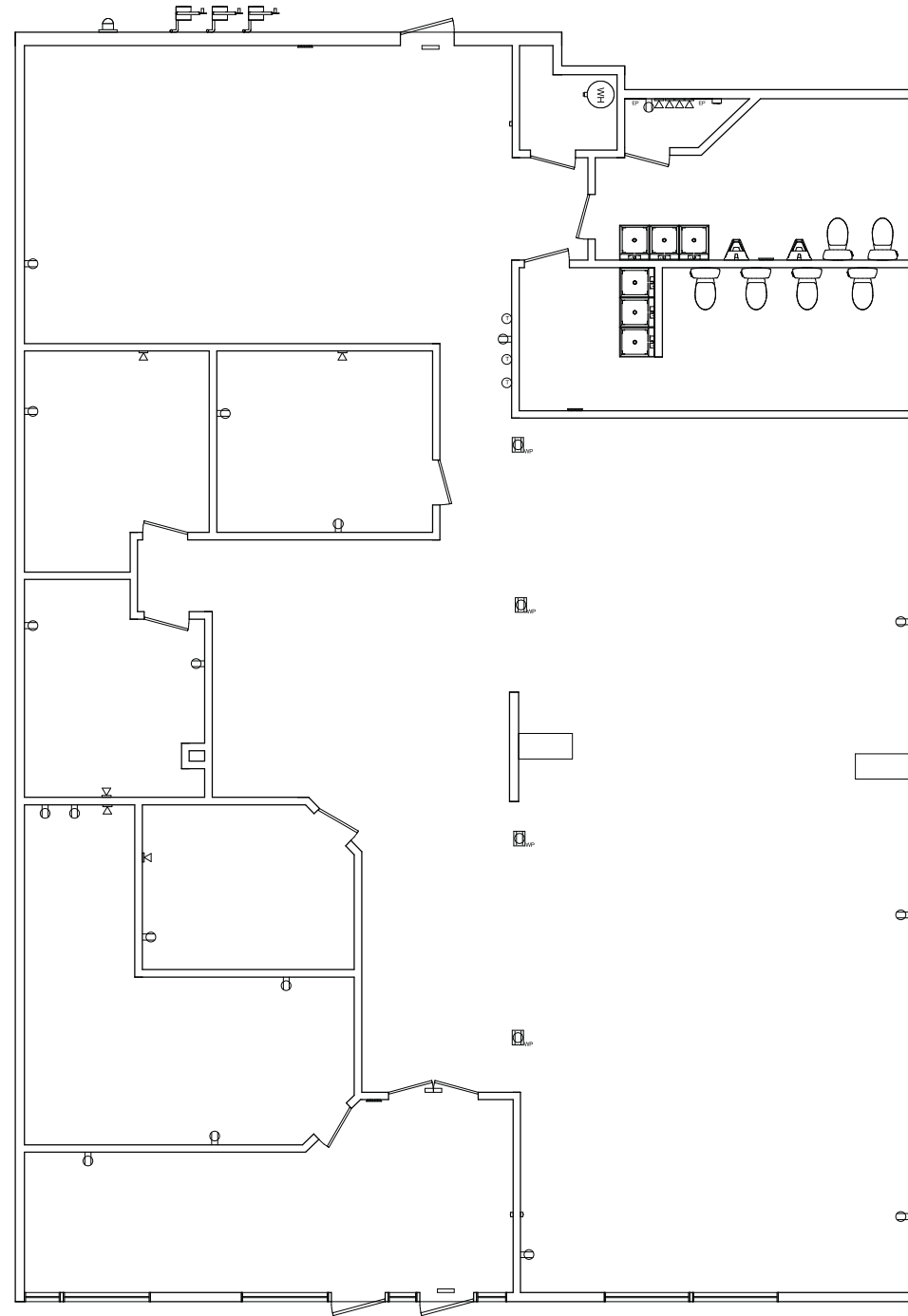
DATE:

01/12/17

SQ. FT.

3,420

SHEET:



1st Floor



REVISION TABLE	
NUMBER	DATE

DOC #: 303801\_19

**BANKS STATION  
UNIT 19**

GaelCom, Inc.  
4220 Itchenockeassa Blvd.,  
Lakeland, FL 33810  
Tel: (224) GAELCOM

DATE:

01/12/17

SQ. FT.

3,420

SHEET:



REVISION TABLE	
NUMBER	DATE

DOC #: 303301\_19

**BANKS STATION  
UNIT 19**

GaelCom, Inc.  
4220 Itchenockeassa Blvd.,  
Lakeland, FL 33810  
Tel: (224) GAELCOM

DATE:

01/12/17

SQ. FT.

3,420

SHEET:

- ⊗ CEILING FAN
- CEILING LIGHT
- DECORATIVE LIGHT
- DRAIN
- † DRINKING FOUNTAIN
- ⊞ ELECTRIC METER
- ELECTRIC OUTLET 110V
- ELECTRIC OUTLET 220V
- † ELECTRICAL PANEL
- † EMERGENCY LIGHT
- || EXIT SIGN
- FIRE EXTINGUISHER
- FIRE LIGHT
- ⊞ RECESSED FLUORESCENT 24x24
- ⊞ RECESSED FLUORESCENT 24x48
- † GAS METER
- SINK
- INCANDESCENT LIGHT OR BULB
- MOTION SENSOR
- PENDANT LIGHT
- ⊞ RECESSED SPOT OR FLOOD
- || SECURITY SYSTEM KEYPAD
- ≡ SHOP LIGHT
- SMOKE DETECTOR
- SPOTLIGHT (SINGLE)
- FIRE SPRINKLER
- TELEPHONE OR DATA POINT(S)
- TIMER
- THERMOSTAT
- ⊞ TOILET
- † TRACK LIGHTING
- ▷ URINAL
- WALL LIGHT
- WATER HEATER
- WATER METER

GENERAL UNIT INFORMATION		
Height to ceiling	8'11"	ft
Height to joist	12'2"	ft
Height to roof	15'11"	ft
Panel 1 Load	n/a	Amps
Panel 2 Load	n/a	Amps
Panel 3 Load	no	Amps
Column 1 dim.	no	in
Column 2 dim.	no	in
Column 3 dim.	no	in
Sales Floor	carpet	type
Other Floor	linoleum	type
Sprinklers	yes	yes
Loading Dock	no	yes

- UNIT NOTES:**
1. House Panel capacity (Amperage) was not marked and no main was evident.
  2. Electric Meter # - 88699504
  3. Gas Meter # - 1997743
  4. Gas Meter # - 1225558
  5. Gas Meter # - 1745706
  6. Gas Meter pipe Diam. 55mm.
  7. Gas Meter pipe Diam. 35mm.
  8. No Water Meters found near by.

- GENERAL COMMENTS:**
1. These schematic layouts are for representative purposes and do not preclude the requirement for architectural drawings and verification prior to internal layout and design.
  2. All internal measurements were taken with Bosch GLM 40X Laser Measurer or Equivalent.
  3. All internal measurements in drawing are Face to Face consistent with actual field recordings.
  4. Measurements, Ceiling Heights, and pillar placements are accurate to nearest half inch.