

# 1130 Commerce Boulevard

1130 Commerce Boulevard  
Swedesboro, NJ 08085

## SUBLEASE HIGHLIGHTS

SIZE (SF) 215,886 SF

OFFICE SF 6,586 SF

SUBLEASE TERM Exp. 12/31/2032

YEAR BUILT 2002

CLIMATE CONTROL Air Conditioned Space

TAILGATES 52 (Cross Docks)

DRIVE-INS 2 Ramp Access Doors

TRUCK COURT 170' with 60' Concrete Apron

PARKING 140 parking & 45 dock trailer spaces

OUTDOOR AREA Fenced Lot

CEILING HEIGHT 32'

COLUMN SPACING 42'6" x 54'

SPRINKLERS ESFR Sprinkler System

LIGHTING LED Lighting



## Contact Us

**Dan McGovern**  
Executive Vice President  
+1 856 524 1447  
dan.mcgovern@cbre.com  
Licensed: NJ, PA

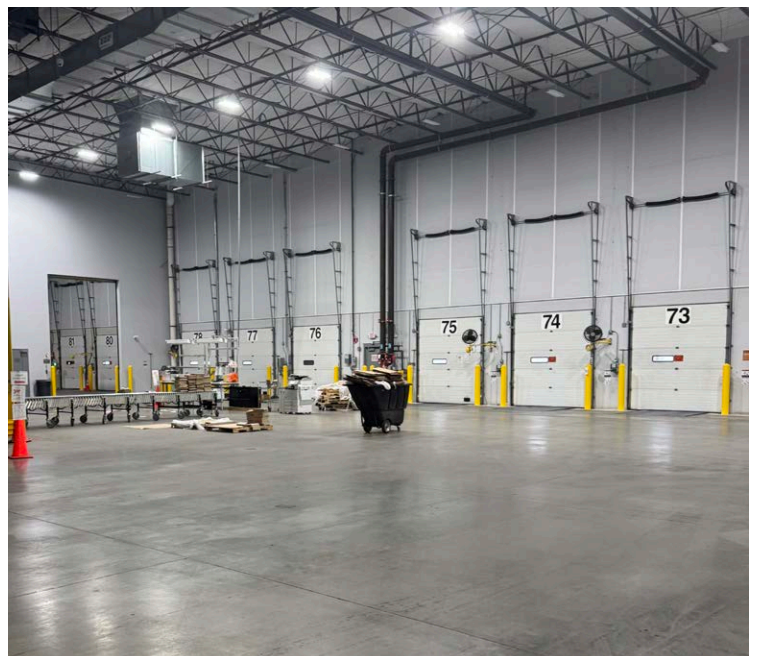
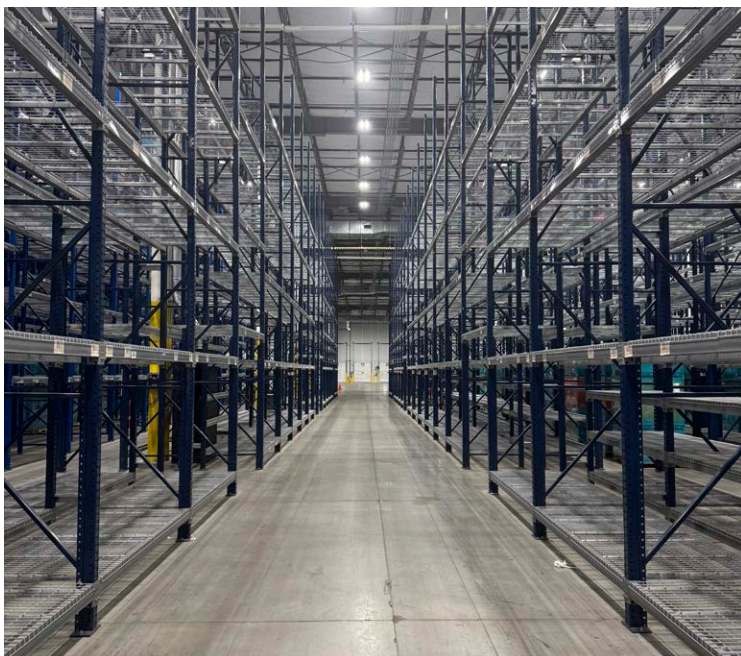
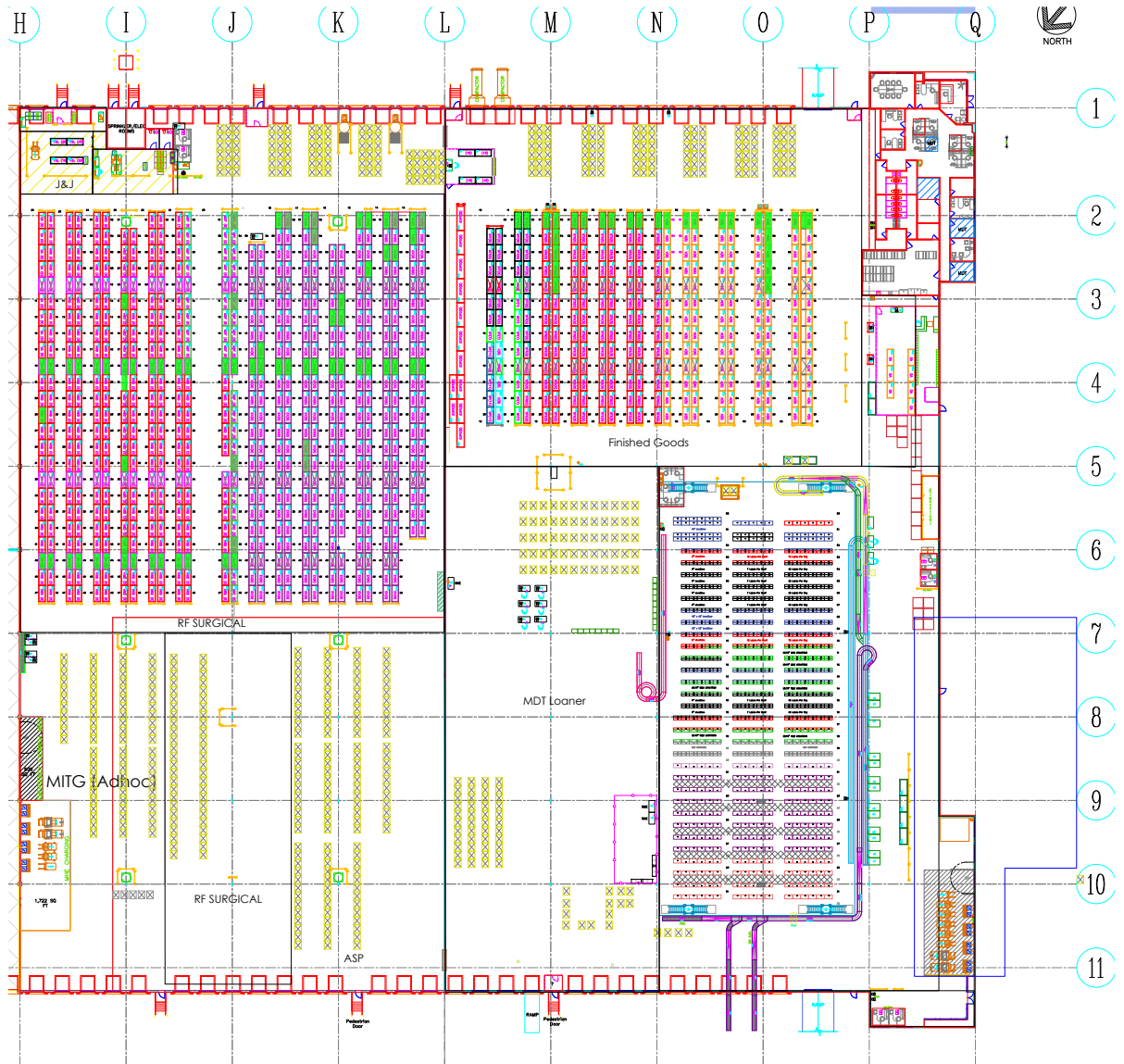
**Andrew Green**  
Executive Vice President  
+1 610 405 9030  
andrew.green@cbre.com  
Licensed: NJ, PA

**Colby Reeder**  
Associate  
+1 302 299 3597  
colby.reeder@cbre.com  
Licensed: NJ, PA, DE

**CBRE, Inc.**  
555 E. Lancaster Avenue  
Suite 120  
Radnor, PA 19087  
Licensed Real Estate Broker

**CBRE**

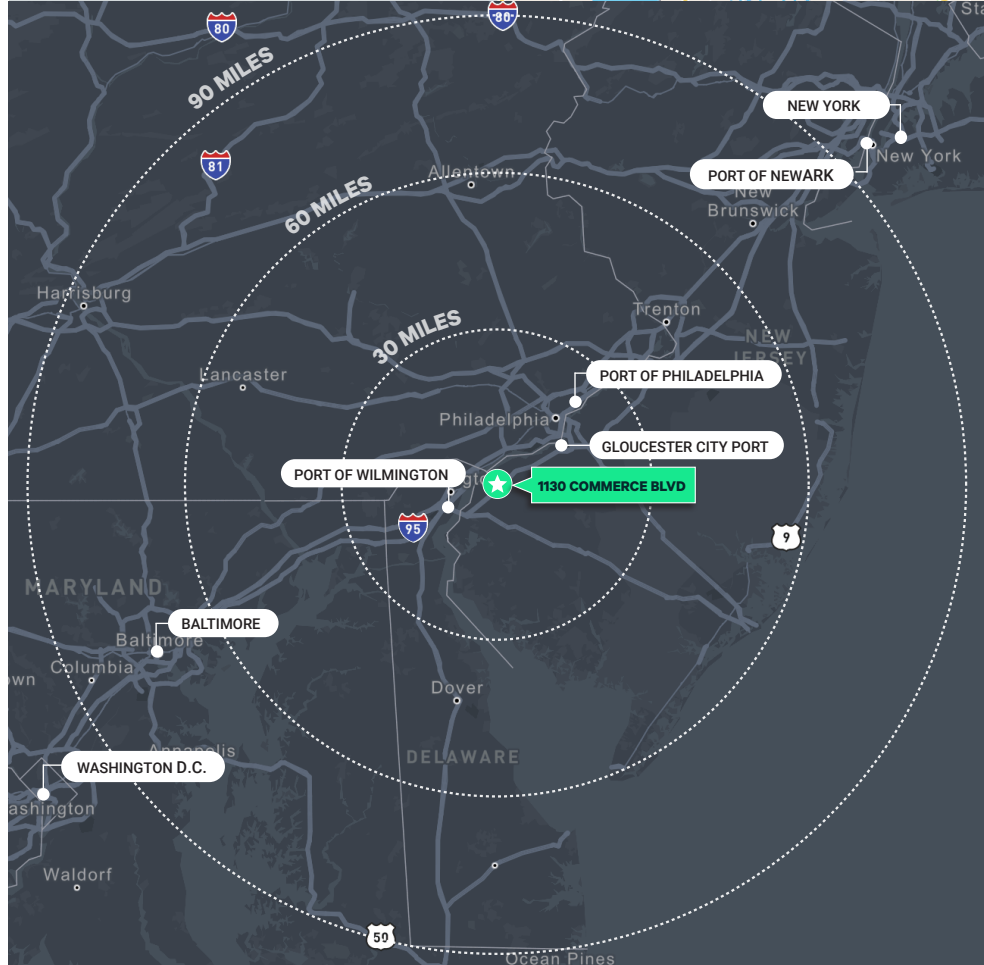
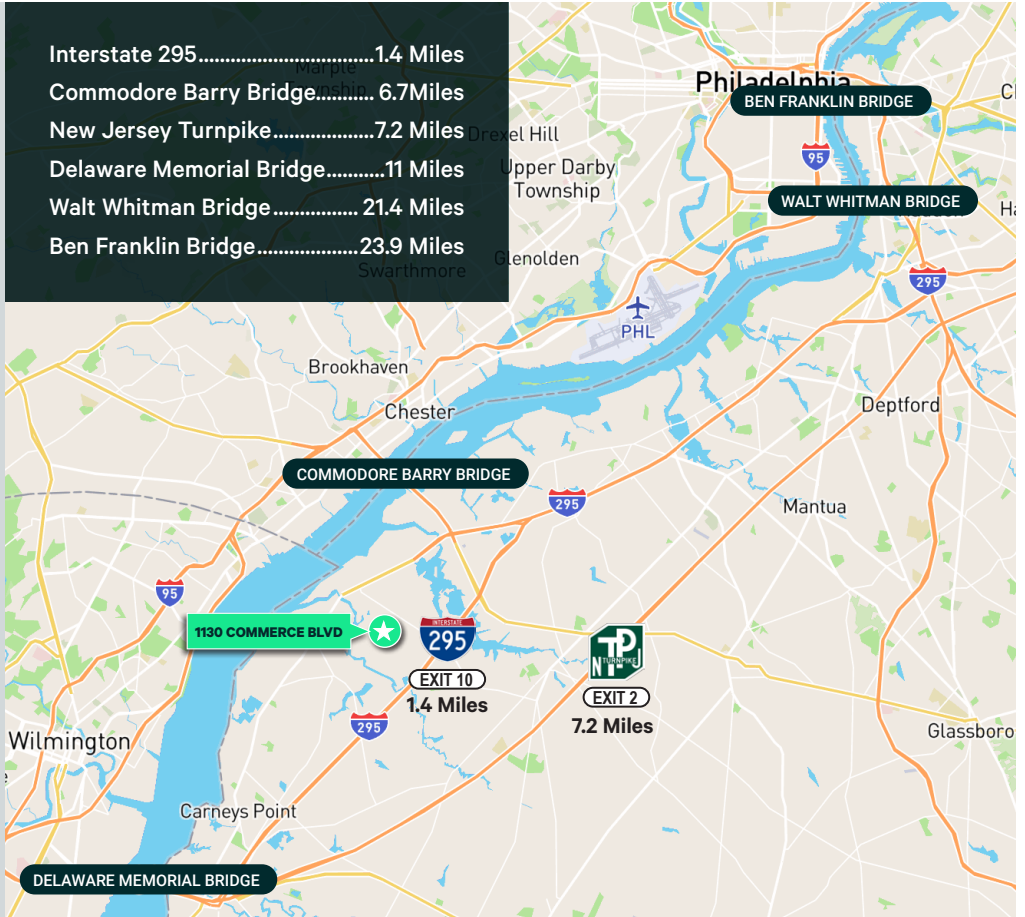
## FLOOR PLAN



## The Location

Located in LogistiCenter at Logan, **1130 Commerce Boulevard** is just one and a half to miles Exit 10 of toll free I-295, under five miles to Commodore Barry Bridge into PA and just 7.2 Miles to Exit 2 of the New Jersey Turnpike. This facility is also just 13 miles to Delaware and 25 Miles to Philadelphia, PA. Almost Equidistant to both New York City and Washington, DC, this location is unparalleled and can serve all of your local, regional and national distribution needs.

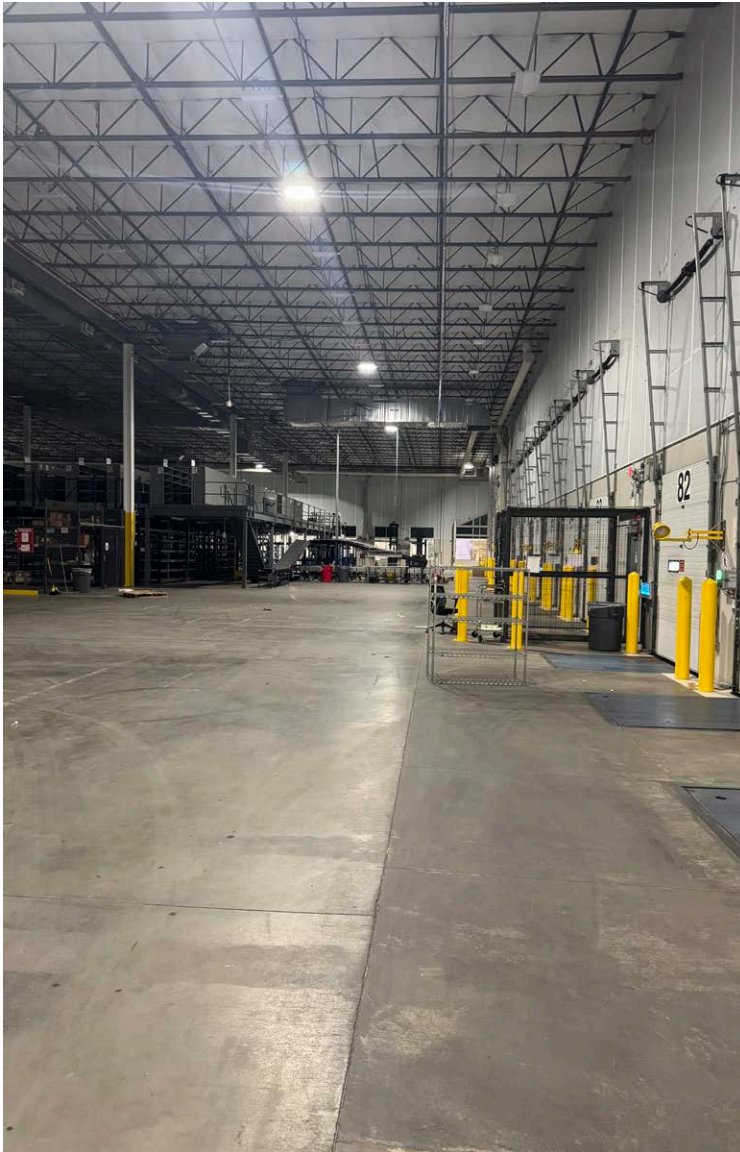
Interstate 295.....1.4 Miles  
 Commodore Barry Bridge..... 6.7Miles  
 New Jersey Turnpike.....7.2 Miles  
 Delaware Memorial Bridge.....11 Miles  
 Walt Whitman Bridge..... 21.4 Miles  
 Ben Franklin Bridge.....23.9 Miles



## DISTANCES TO MAJOR DESTINATIONS

Port of Wilmington	16.4 Miles
Gloucester City Port	19.1 Miles
Port of Philadelphia	30.6 Miles
Baltimore	82 Miles
Port of Newark	102 Miles
New York	110 Miles
Washington D.C.	131 Miles
Boston	322 Miles
Miami	1,183 Miles

## Property Photos



## Contact Us

**Dan McGovern**  
Executive Vice President  
+1 856 524 1447  
dan.mcgovern@cbre.com  
Licensed: NJ, PA

**Andrew Green**  
Executive Vice President  
+1 610 405 9030  
andrew.green@cbre.com  
Licensed: NJ, PA

**Colby Reeder**  
Associate  
+1 302 299 3597  
colby.reeder@cbre.com  
Licensed: NJ, PA, DE

**CBRE, Inc.**  
555 E. Lancaster Avenue  
Suite 120  
Radnor, PA 19087  
Licensed Real Estate Broker

© 2025 CBRE, Inc. All rights reserved. This information has been obtained from sources believed reliable, but has not been verified for accuracy or completeness. You should conduct a careful, independent investigation of the property and verify all information. Any reliance on this information is solely at your own risk. CBRE and the CBRE logo are service marks of CBRE, Inc. All other marks displayed on this document are the property of their respective owners, and the use of such logos does not imply any affiliation with or endorsement of CBRE. Photos herein are the property of their respective owners. Use of these images without the express written consent of the owner is prohibited.