



# The Villages at Superstition Springs

## Office Condo

6640 E. Baseline Rd, Suite 103, Mesa, AZ 85206

**For Sale: \$700,000 (\$411.52/SF)**

**General Office Owner/User Opportunity**



Amy Gibson, Designated Broker/Owner: 602-625-5647; Amy@DreamMakerca.com



# Property Information

6640 E. Baseline Rd, Suite 103, Mesa, AZ 85206

THIS GENERAL OFFICE CONDO WITH HIGH-END FINISHES IS ADJACENT TO SUPERSTITION SPRINGS GOLF COURSE PROVIDING A CALM SERENE ATMOSPHERE.

**Asking:** \$700,000 (\$411.52/SF)

**Size:** ±1,701/SF

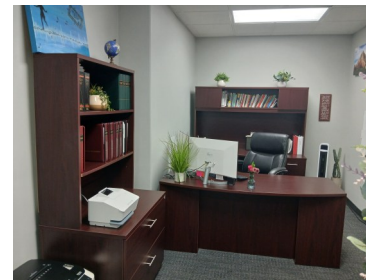
**Zoning:** OC

**Year Built:** 2006

**HOA Monthly Fee:** \$485.00

**2025 Property Tax:** \$3,396.84

**APN:** 141-54-726



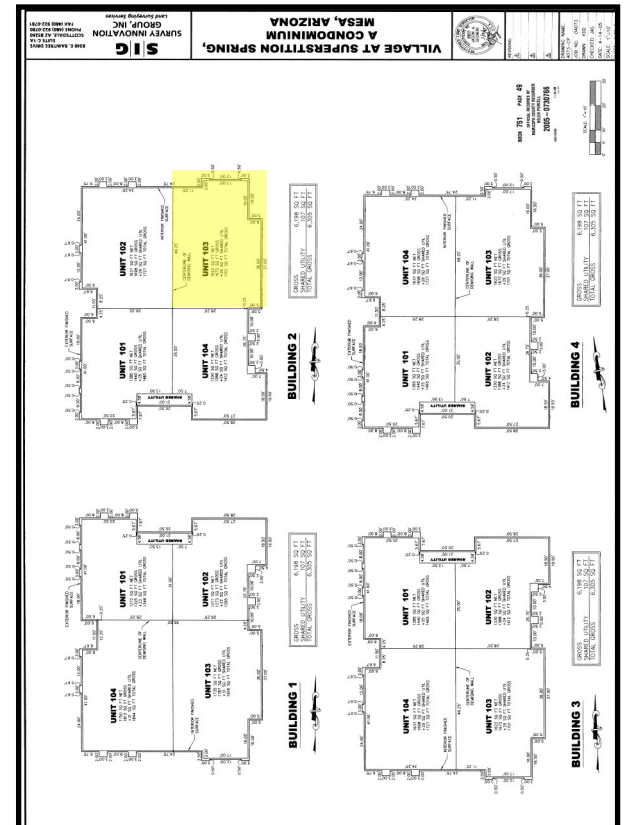
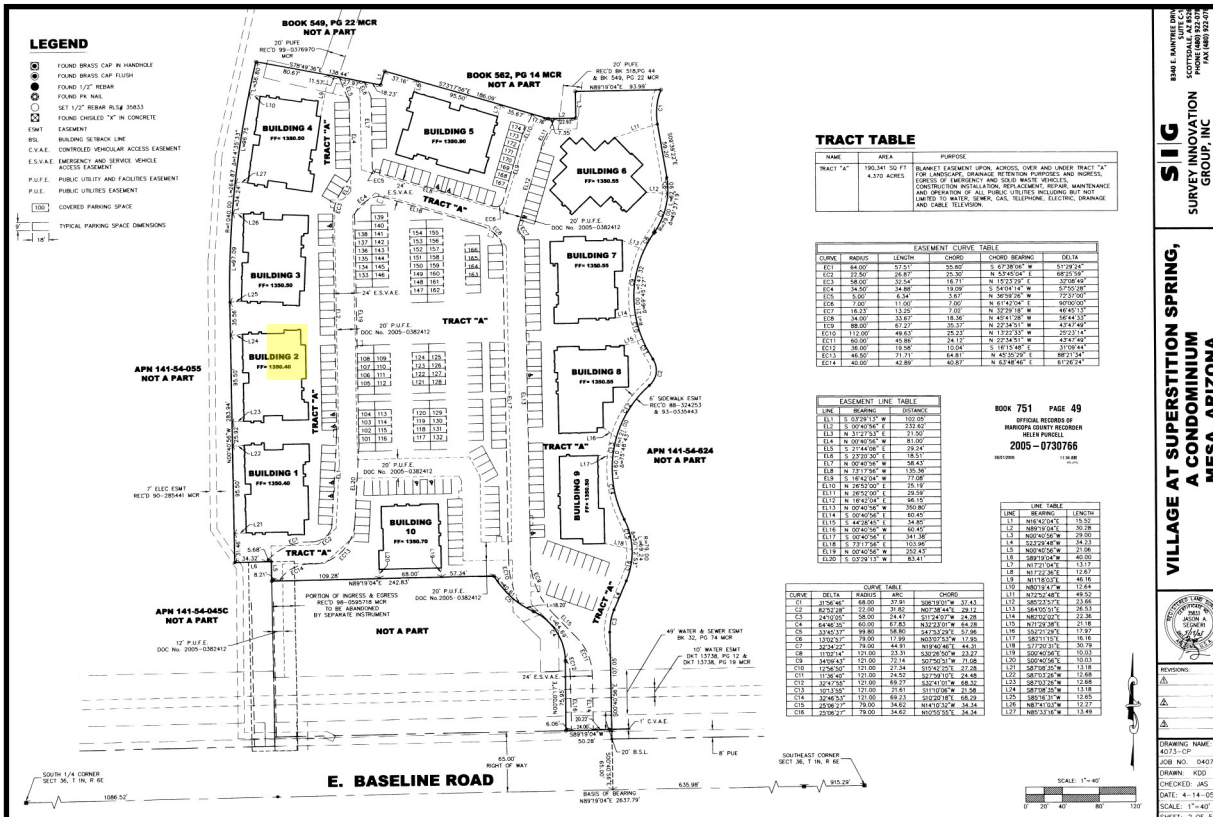
Amy Gibson, Designated Broker/Owner: 602-625-5647; Amy@DreamMakerca.com





# Plat Map

## 6640 E. Baseline Rd, Suite 103, Mesa, AZ 85206



**2 COVERED PARKING SPACES ARE ASSIGNED TO THIS CONDOMINIUM THROUGH THE ASSOCIATION.**

Amy Gibson, Designated Broker/Owner: 602-625-5647; Amy@DreamMakerca.com



# Ariel of Property

6640 E. Baseline Rd, Suite 103, Mesa, AZ 85206



Amy Gibson, Designated Broker/Owner: 602-625-5647; Amy@DreamMakerca.com

# NON ENDORSEMENT AND DISCLAIMER NOTICE

## Confidentiality and Disclaimer

The information contained in the following Marketing Brochure is proprietary and strictly confidential. It is intended to be reviewed only by the party receiving it from Dream Maker Commercial Advisors, LLC and should not be made available to any other person or entity without the written consent of Dream Maker Commercial Advisors, LLC. The Marketing Brochure has been prepared to provide summary, unverified information to prospective purchasers, and to establish only a preliminary level of interest in the subject property. The information contained herein is not a substitute for a thorough due diligence investigation, Dream Maker Commercial Advisors, LLC has not made any investigation, and makes no warranty or representation, with respect to the income or expense for the subject property, the future projected financial performance of the property, the size and square footage of the property, and improvements, the presence or absence of contaminating substances, PCB's or asbestos, the compliance with State and Federal regulations, the physical condition of the improvements therein, or the financial condition or business prospects of any tenant, or any tenant's plans or intentions to continue its occupancy of the subject property. The information contained in this Marketing Brochure has been obtained from sources we believe to be reliable however, Dream Maker Commercial Advisors, LLC has not verified and will not verify, any of the information contained herein, nor has Dream Maker Commercial Advisors, LLC conducted any investigation regarding these matters and makes no warranty or representation whatsoever regarding the accuracy or completeness of the information provided. All potential buyers must take appropriate measures to verify all of the information set forth herein.

## Non-Endorsement Notice

Dream Maker Commercial Advisors is not affiliated with, sponsored by, or endorsed by any commercial tenant or lessee identified in this marketing package. The presence of any corporation's logo or name is not intended to indicate or imply affiliation with, or sponsorship or endorsement by, said corporation of Dream Maker Commercial Advisors, its affiliates or subsidiaries, or any agent, product, service, or commercial listing of Dream Maker Commercial Advisors, and is solely included for the purpose of providing tenant lessee information about this listing to prospective customers.



For more information consult Designated Broker,

Amy Gibson

Designated Broker/Owner

Dream Maker Commercial Advisors, LLC

602-625-5647

[Amy@DreamMakerca.com](mailto:Amy@DreamMakerca.com)