



FOR **LEASE** OFFICE
PROPERTY



4423 Ardmore Avenue
Fort Wayne, IN 46809

5,950 SF Office Space Available

About The Property

- Tenant friendly rental rate
- Stand-alone building with dedicated parking
- Located near Engle Rd./Ardmore Ave. intersection
- Fenced-in outdoor storage capability
- High visibility along Engle Rd.
- Lease rate: \$6.50 SF/yr. NNN



the
Zacher
company

DAN GABBARD
Broker Associate
dgabbard@zacherco.com
260.422.8474

FLETCHER MOPPETT
Broker Associate
fmoppert@zacherco.com
260.422.8474

444 E. MAIN STREET, SUITE 203, FORT WAYNE, IN 46802 • WWW.ZACHERCO.COM

The information contained herein was obtained from sources we consider to be reliable. We cannot be responsible, however, for errors, omissions, prior sale, withdrawal from the market or change in price. We make no representation as to the environmental or structural condition of the property and recommend independent investigation by all parties.

PROPERTY INFORMATION

5,950 SF OFFICE SPACE AVAILABLE

BUILDING LOCATION/SIZE/ZONING

Street Address	4423 Ardmore Avenue
City, State, Zip	Fort Wayne, IN 46809
Building Size	7,992 SF
Site Acreage	8.80 Acres
Zoning	I1/Limited Industrial

PRICE/AVAILABILITY

Available Space	5,950 SF
Lease Rate	\$6.50 SF/yr
Lease Type	NNN

BUILDING DATA

Date of Construction	1967
Building Type	Office

POPULATION DEMOGRAPHICS

1 Mile	3,063
3 Miles	48,628
5 Miles	137,982

FINANCIAL RESPONSIBILITIES

Utilities	Tenant
Property Taxes*	Tenant
Property Insurance*	Tenant
Common Area Maintenance*	Tenant
Non Structural Maintenance	Tenant
Roof & Structure	Landlord

*Pro-rata share based on SF/area

NEARBY BUSINESSES

Sabert	Nelson Global
Touchet Performance Golf	Strahm Group
Fastenal	Hot Crews Inc.
Precision Mechanical Contractor	Perfect Steel Solutions
Alliance Tools	Fort Wayne Roofing
Scheerer McCulloch	Sycamore Transport
Sealed Air	Industrial Engineering



DAN GABBARD
Broker Associate
dgabbard@zacherco.com
260.422.8474

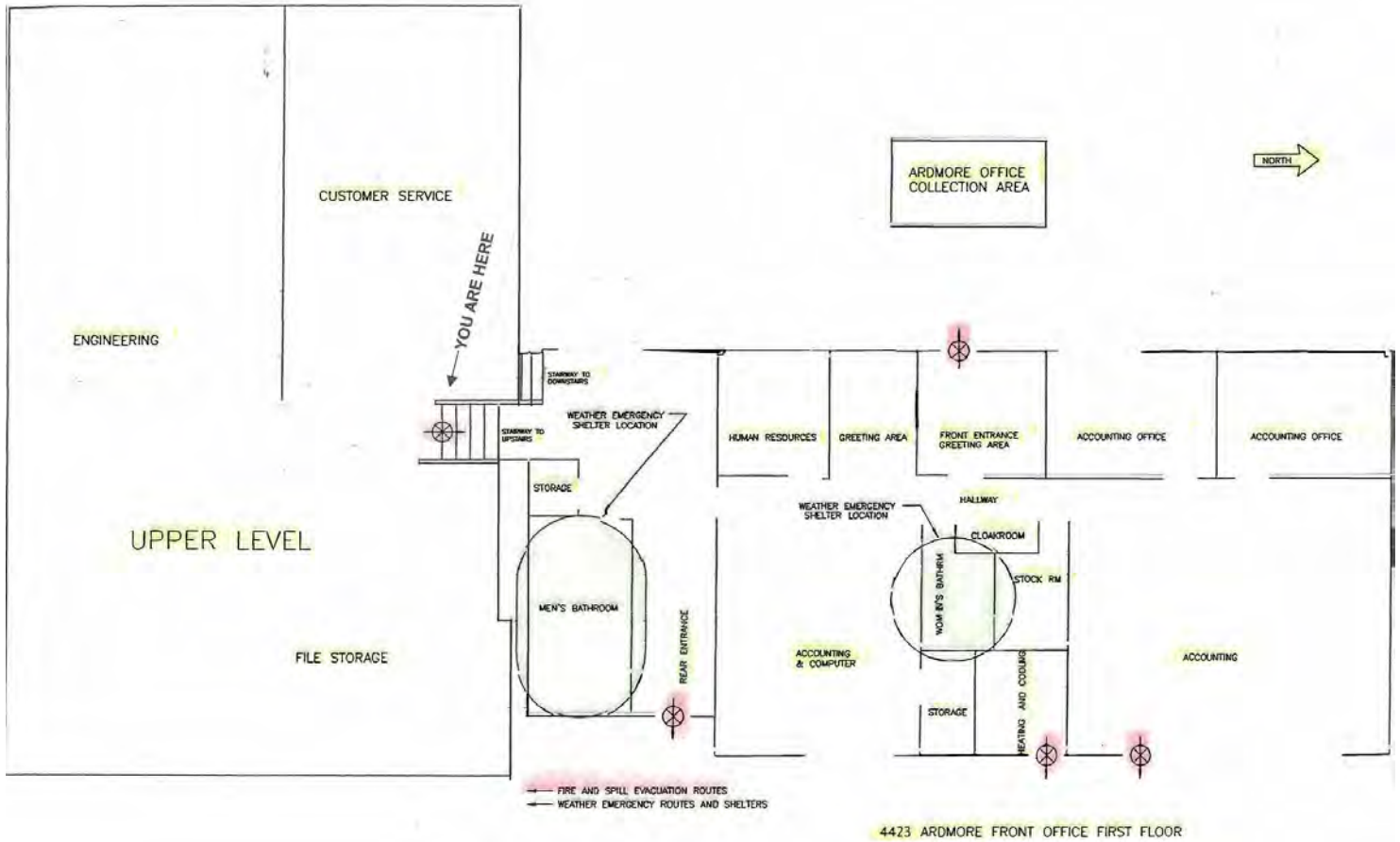
FLETCHER MOPPERT
Broker Associate
fmoppert@zacherco.com
260.422.8474



The information contained herein was obtained from sources we consider to be reliable. We cannot be responsible, however, for errors, omissions, prior sale, withdrawal from the market or change in price. We make no representation as to the environmental or structural condition of the property and recommend independent investigation by all parties.

FLOOR PLAN

5,950 SF OFFICE SPACE AVAILABLE



DAN GABBARD
Broker Associate
dgabbard@zacherco.com
260.422.8474

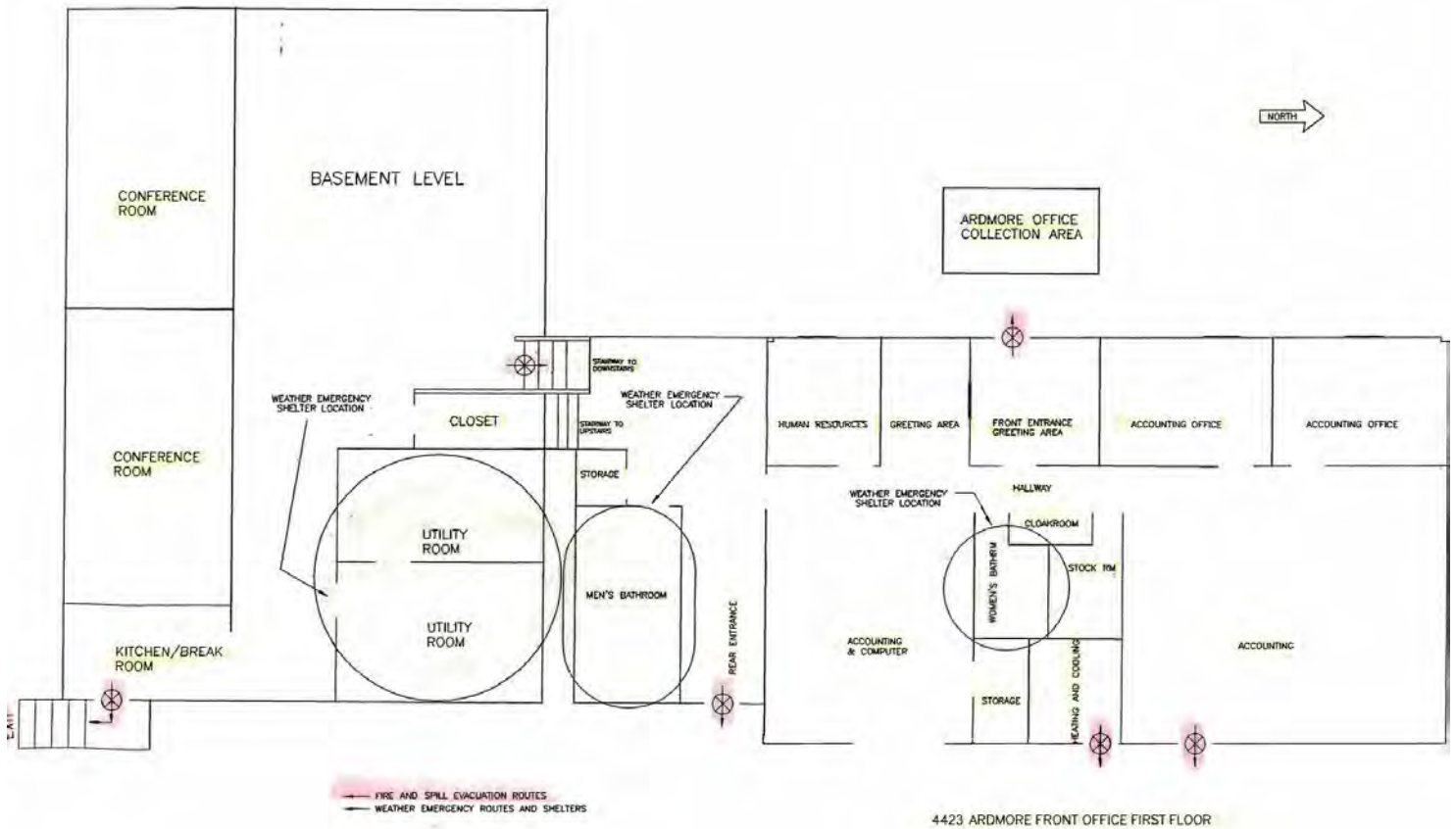
FLETCHER MOPPERT
Broker Associate
fmoppert@zacherco.com
260.422.8474



The information contained herein was obtained from sources we consider to be reliable. We cannot be responsible, however, for errors, omissions, prior sale, withdrawal from the market or change in price. We make no representation as to the environmental or structural condition of the property and recommend independent investigation by all parties.

FLOOR PLAN

5,950 SF OFFICE SPACE AVAILABLE



DAN GABBARD
Broker Associate
dgabbard@zacherco.com
260.422.8474

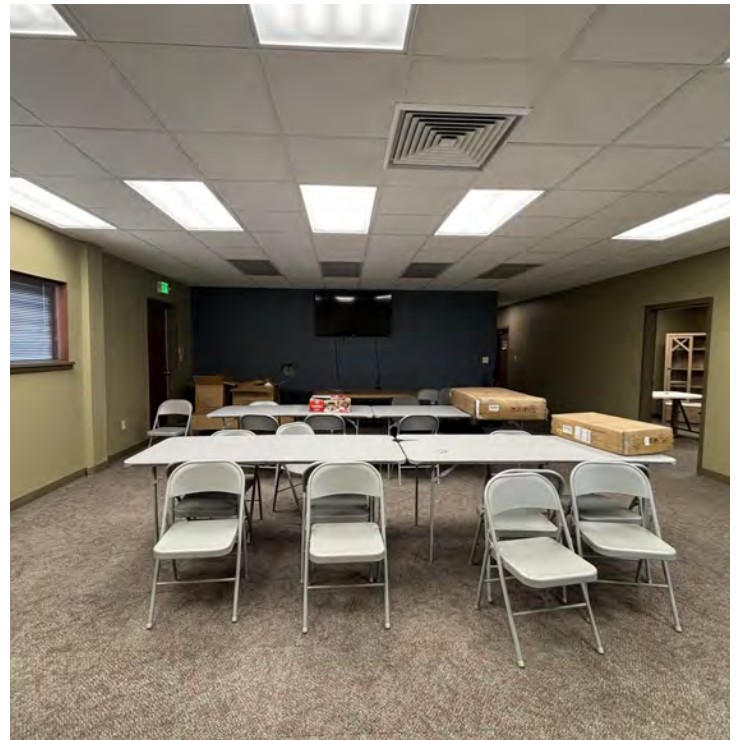
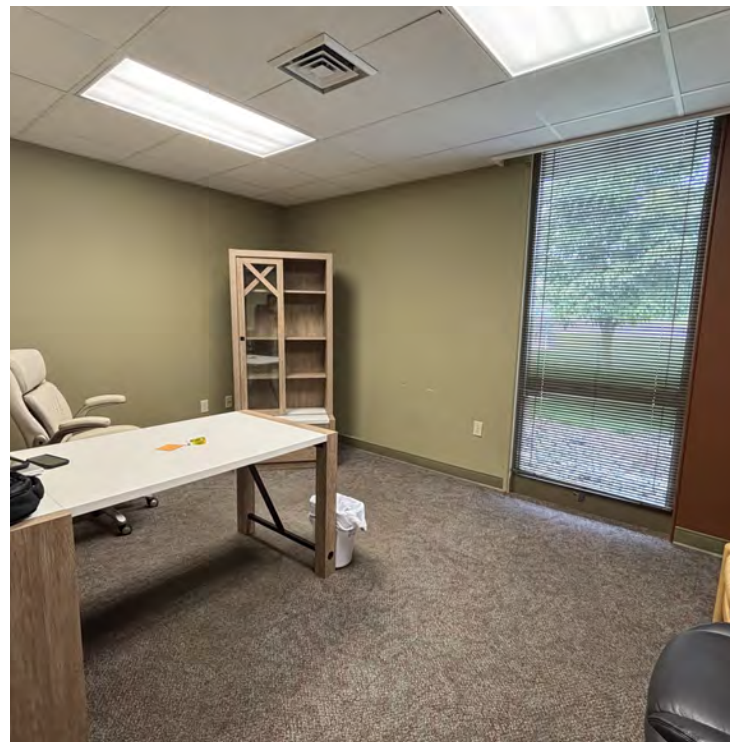
FLETCHER MOPPERT
Broker Associate
fmoppert@zacherco.com
260.422.8474



The information contained herein was obtained from sources we consider to be reliable. We cannot be responsible, however, for errors, omissions, prior sale, withdrawal from the market or change in price. We make no representation as to the environmental or structural condition of the property and recommend independent investigation by all parties.

ADDITIONAL PHOTOS

5,950 SF OFFICE SPACE AVAILABLE



DAN GABBARD
Broker Associate
dgabbard@zacherco.com
260.422.8474

FLETCHER MOPPERT
Broker Associate
fmoppert@zacherco.com
260.422.8474



The information contained herein was obtained from sources we consider to be reliable. We cannot be responsible, however, for errors, omissions, prior sale, withdrawal from the market or change in price. We make no representation as to the environmental or structural condition of the property and recommend independent investigation by all parties.

AERIAL MAP

5,950 SF OFFICE SPACE AVAILABLE



DAN GABBARD
Broker Associate
dgabbard@zacherco.com
260.422.8474

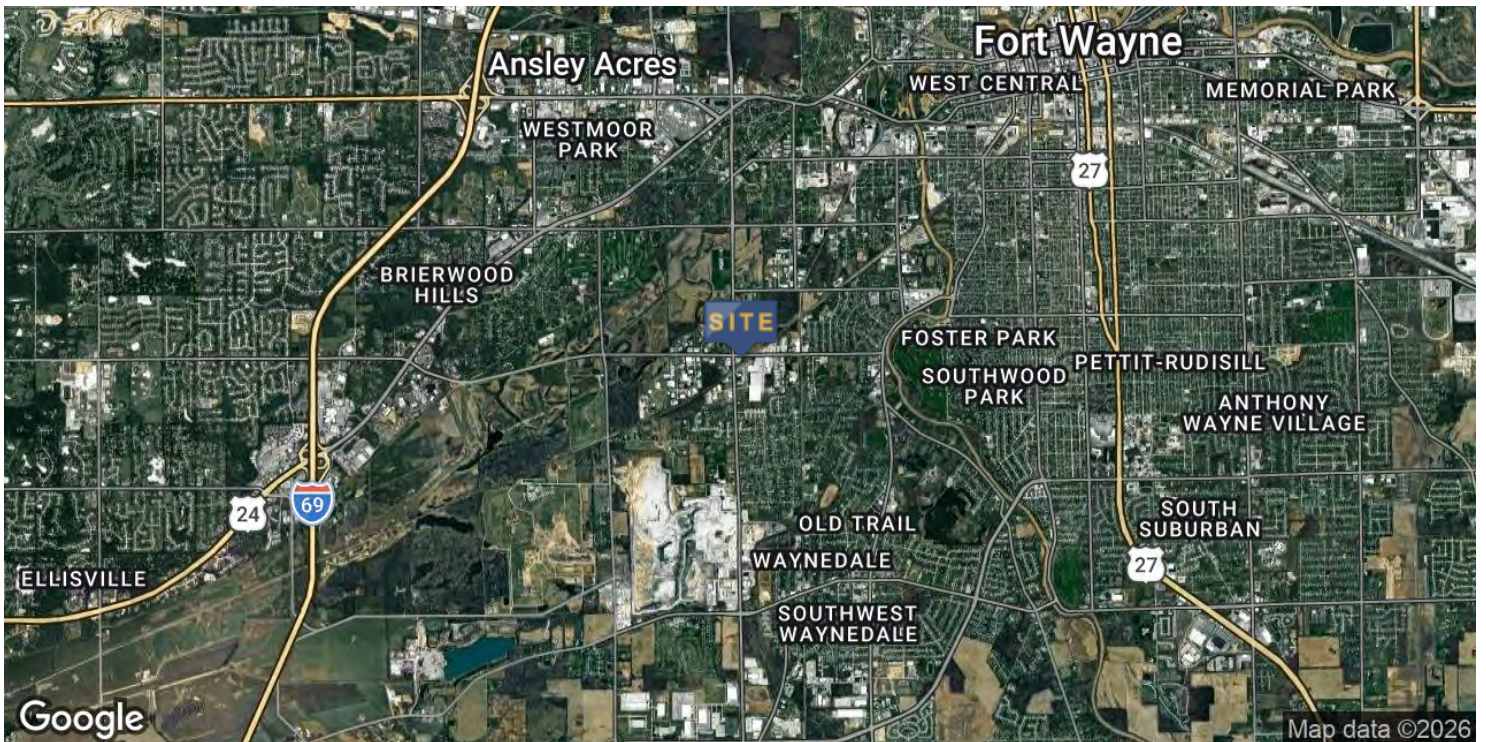
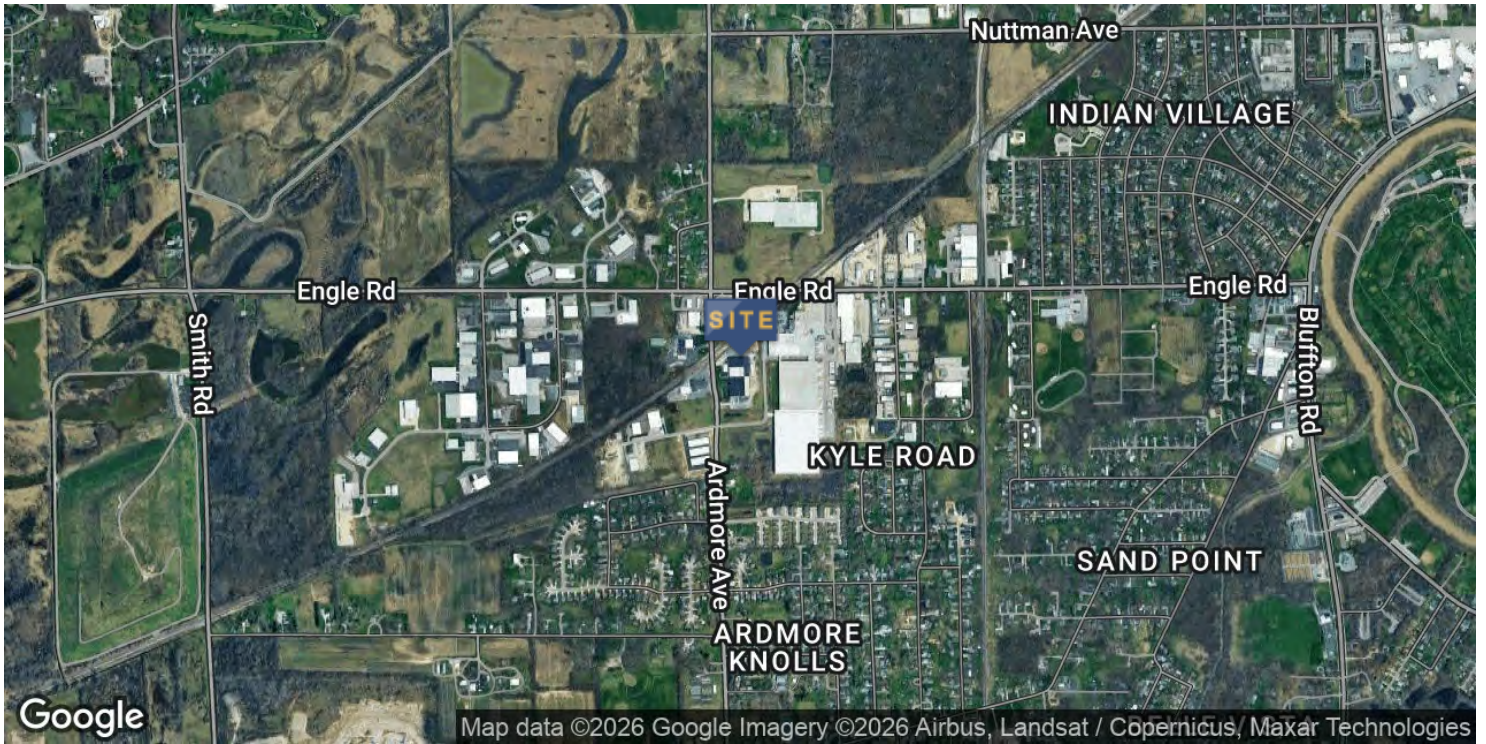
FLETCHER MOPPERT
Broker Associate
fmoppert@zacherco.com
260.422.8474



The information contained herein was obtained from sources we consider to be reliable. We cannot be responsible, however, for errors, omissions, prior sale, withdrawal from the market or change in price. We make no representation as to the environmental or structural condition of the property and recommend independent investigation by all parties.

LOCATION MAP

5,950 SF OFFICE SPACE AVAILABLE



DAN GABBARD
Broker Associate
dgabbard@zacherco.com
260.422.8474

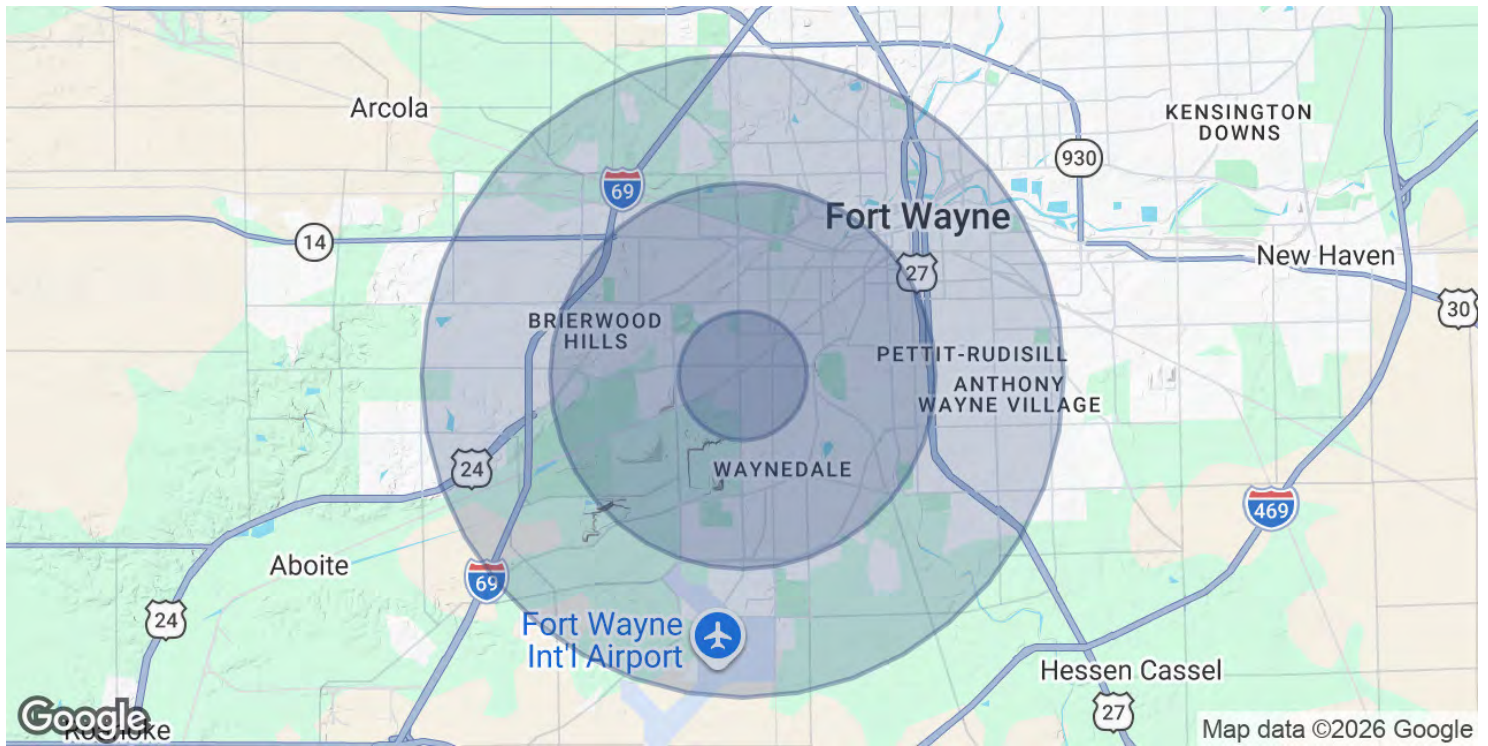
FLETCHER MOPPERT
Broker Associate
fmoppert@zacherco.com
260.422.8474



The information contained herein was obtained from sources we consider to be reliable. We cannot be responsible, however, for errors, omissions, prior sale, withdrawal from the market or change in price. We make no representation as to the environmental or structural condition of the property and recommend independent investigation by all parties.

DEMOGRAPHICS MAP & REPORT

5,950 SF OFFICE SPACE AVAILABLE



POPULATION	1 MILE	3 MILES	5 MILES
Total Population	3,063	48,628	137,982
Average Age	43.7	36.2	35.6
Average Age (Male)	42.1	34.9	34.5
Average Age (Female)	43.1	37.6	37.0
HOUSEHOLDS & INCOME	1 MILE	3 MILES	5 MILES
Total Households	1,336	22,855	63,389
# of Persons per HH	2.3	2.1	2.2
Average HH Income	\$62,715	\$52,578	\$53,952
Average House Value	\$92,588	\$103,579	\$107,825

2020 American Community Survey (ACS)



DAN GABBARD
 Broker Associate
 dgabbard@zacherco.com
 260.422.8474

FLETCHER MOPPERT
 Broker Associate
 fmoppert@zacherco.com
 260.422.8474



The information contained herein was obtained from sources we consider to be reliable. We cannot be responsible, however, for errors, omissions, prior sale, withdrawal from the market or change in price. We make no representation as to the environmental or structural condition of the property and recommend independent investigation by all parties.