

Fully Built Out & Stand Alone Building For Sale With Parking - Plug and Play!

## 660 TONNELE AVENUE, JERSEY CITY 07307

On High-Traffic Tonnele Ave with Unbelievable Visibility and 63,302 VPD

Virtual Walk-Thru Available



RETAIL

10,000 SF

STAND ALONE  
BUILDING FOR SALE  
WITH PARKING

BRAND NEW!

**BOBBY ANTONICELLO JR., CCIM**

Licensed Real Estate Broker

C: (551) 795 - 2836

bobby@gridcre.com



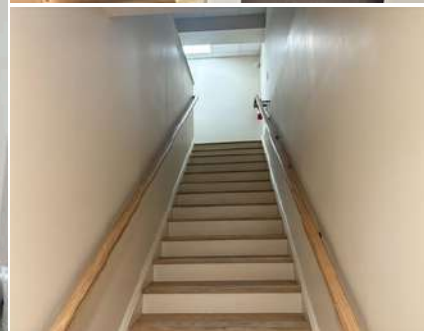
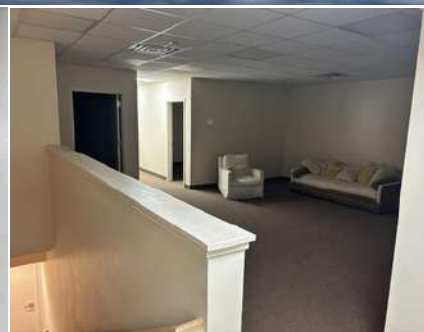
# FRONT OF THE HOUSE



**BACK OF THE HOUSE**



# SECOND FLOOR



# 660 TONNELE AVENUE, JERSEY CITY 07307

## SIZE:

GROUND FLOOR: ± 8,600 SF

- Check-in/Waiting Area
- Retail Area
- Distribution Area
- Interior Garbage Area
- Storage Room
- 3 Office Spaces
- Manufacturing Area
- 3 ADA Restrooms
- Break Room

SECOND FLOOR: ± 1,260 SF

- Conference Room
- 2 Private Offices
- Lounge Area
- 1 ADA Restroom

## FRONTAGE:

TONNELE AVE: 113 FT

## CEILING HEIGHT:

13 FT

## LOCATION:

LOCATED ON TONNELE AVE BETWEEN SECAUCUS RD AND MANHATTAN AVE.

## PARKING:

+/- 26 PARKING SPACES

## LOADING:

1 BAY

## TRAFFIC COUNT:

63,302 VPD.

## SALE:

UPON REQUEST

## COMMENTS:

UNBELIEVABLE OPPORTUNITY TO STEP INTO A BRAND NEW BUILDING WITH A FULL BUILD OUT ALONG TONNELE AVE IN JERSEY CITY.

TONNELE AVENUE IS A MAJOR THOROUGHFARE IN JERSEY CITY'S HIGHWAY COMMERCIAL ZONE, WITH STRONG VEHICLE COUNTS AND GREAT FRONTAGE FOR DRIVE-BY VISIBILITY. NEARBY PROPERTIES HIGHLIGHT "EXCELLENT VISIBILITY, STRONG TRAFFIC COUNTS, AND CONVENIENT ACCESS," MAKING IT IDEAL FOR BUSINESSES THAT BENEFIT FROM PASSING TRAFFIC, SUCH AS RETAIL, AUTOMOTIVE SERVICES, OR CONSUMER-FACING OPERATIONS.

THE AREA IS UNDERGOING MASSIVE TRANSFORMATION WITH HIGH-RISE RESIDENTIAL TOWERS, NEW RETAIL (INCLUDING A TARGET ANCHOR), AND MIXED-USE PROJECTS DRAWING THOUSANDS OF NEW RESIDENTS AND INCREASING FOOT TRAFFIC/DEMAND. DEVELOPMENTS LIKE ONE JOURNAL SQUARE, THE JOURNAL, AND OTHERS ARE ADDING RESIDENTIAL UNITS, AMENITIES, AND COMMERCIAL SPACE, REVITALIZING THE BROADER REGION AND CREATING A VIBRANT, GROWING CUSTOMER BASE.

THE CORRIDOR SUPPORTS A WIDE RANGE OF USES (E.G., RETAIL, OFFICE, HOSPITALITY, SERVICE-ORIENTED BUSINESSES), WITH RECENT ACTIVITY IN CANNABIS/RETAIL SHOWING VIABILITY FOR ADAPTABLE SPACES. THE PROPERTY ITSELF HAS HOSTED LARGE-SCALE COMMERCIAL OPERATIONS (PREVIOUSLY 10,000 SQ FT FOR A DISPENSARY), INDICATING SUITABILITY FOR SIMILAR HIGH-VISIBILITY TENANTS.

AS A FAST-GROWING HUB, JERSEY CITY OFFERS LOWER COSTS THAN NYC WITH EXCELLENT CONNECTIVITY, POPULATION DENSITY, AND ECONOMIC MOMENTUM—PERFECT FOR BUSINESSES SEEKING EXPOSURE IN A DYNAMIC MARKET NEAR MAJOR PORTS, AIRPORTS, AND THE NORTHEAST CORRIDOR.

## STATUS:

AVAILABLE NOW

## MAIN ENTRANCE



## ENTRANCE AND LOADING





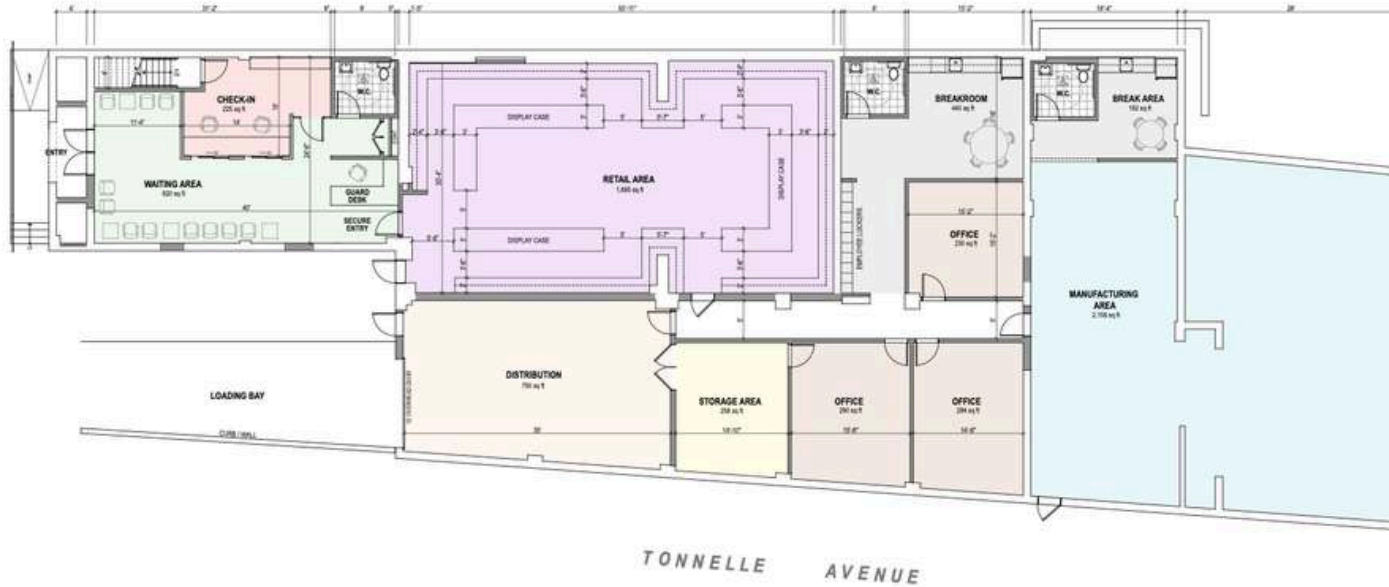
# FLOOR PLAN:



DRAWING LEGEND	
	EXISTING CONSTRUCTION TO REMAIN
	EXISTING TO BE REMOVED
	NEW CONSTRUCTION

AREA LEGEND	
	CHECK-IN / RECEPTION
	SHIPPING / RECEIVING
	STORAGE AREA
	WAITING AREA
	PACKAGING
	RETAIL AREA
	EMPLOYEE / BREAK AREA
	OFFICE AREA

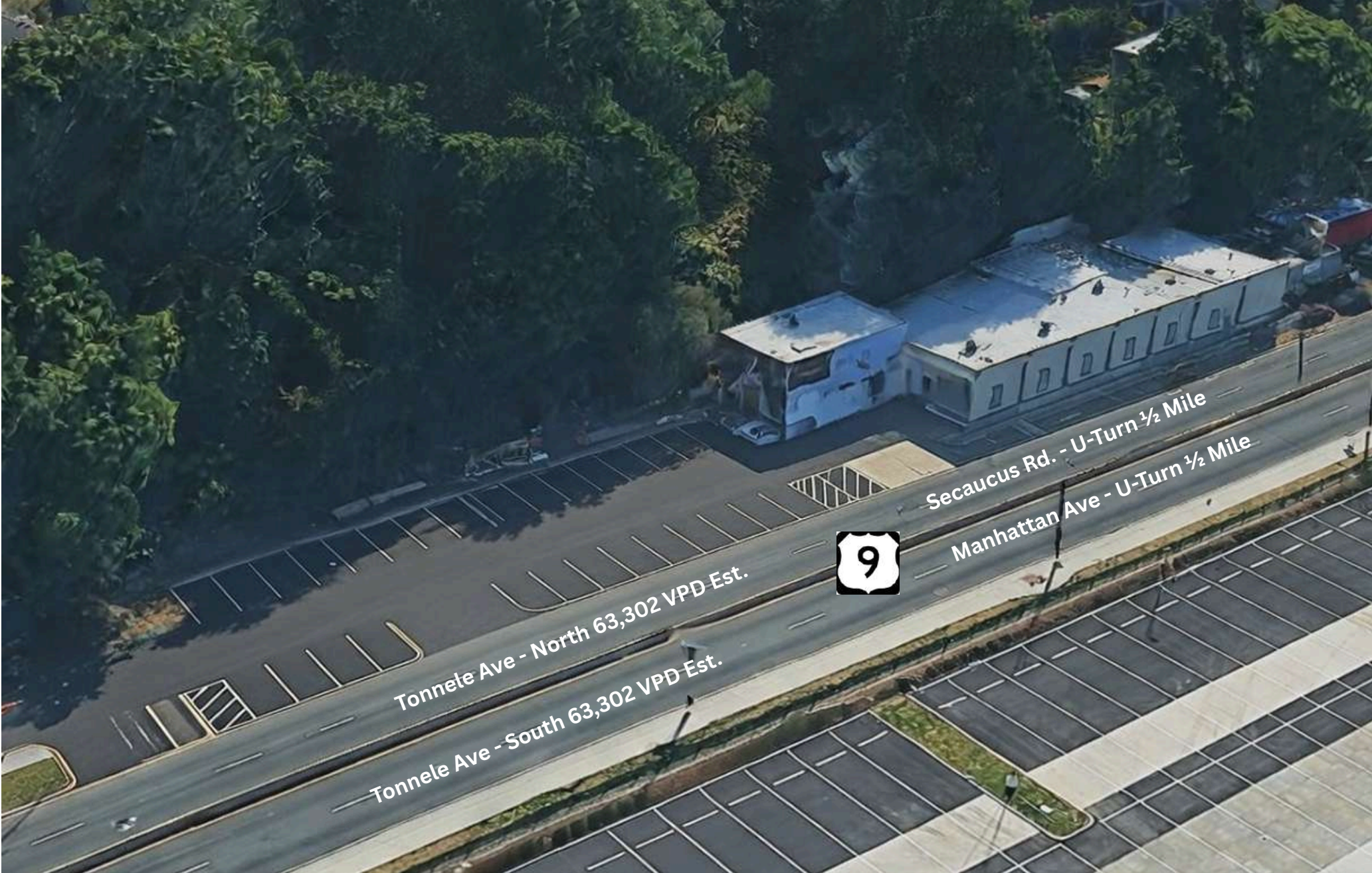
SECOND FLOOR PLAN - PROPOSED (± 1,260 S.F.)



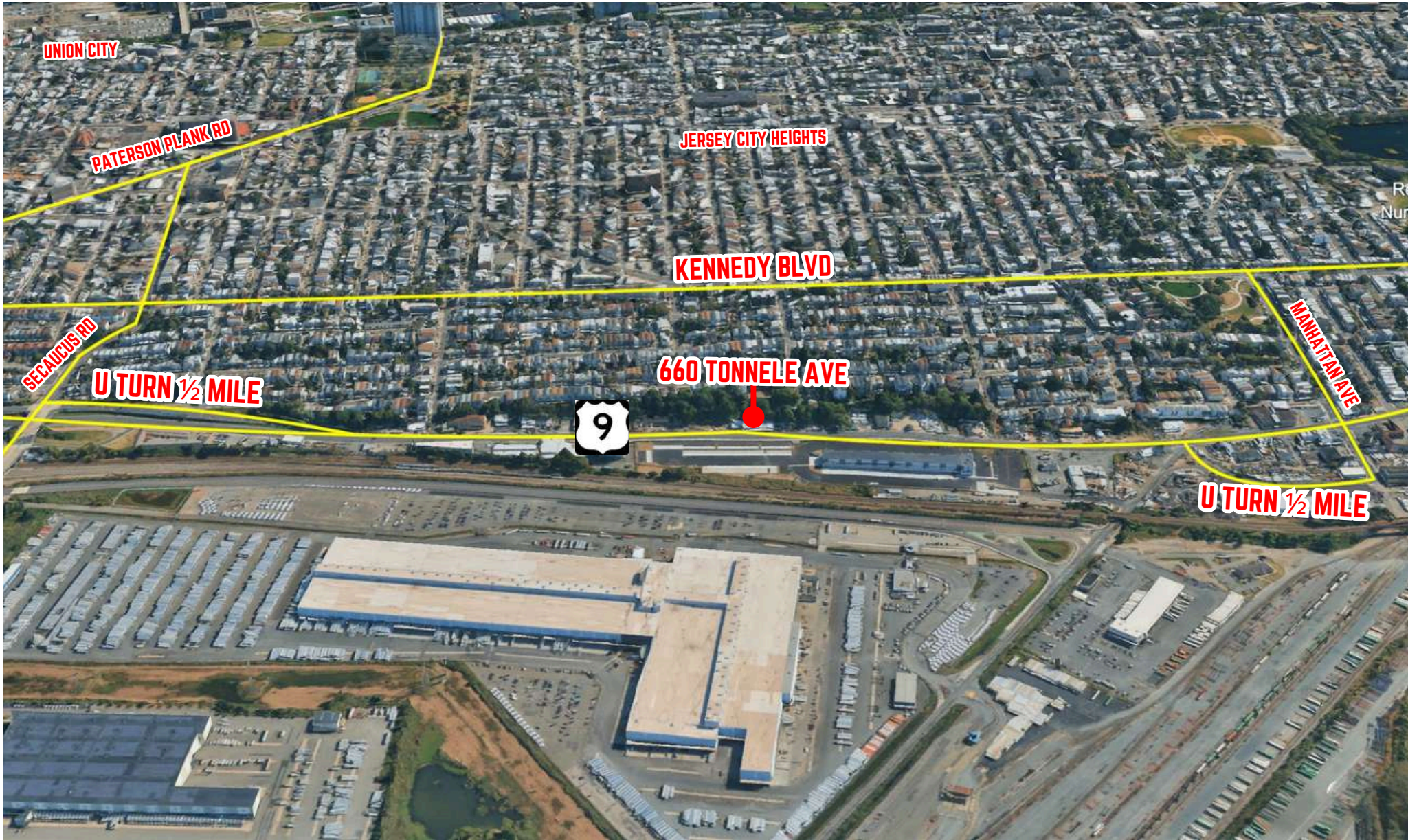
GROUND FLOOR PLAN - PROPOSED SCHEME C (± 8,600 S.F.)



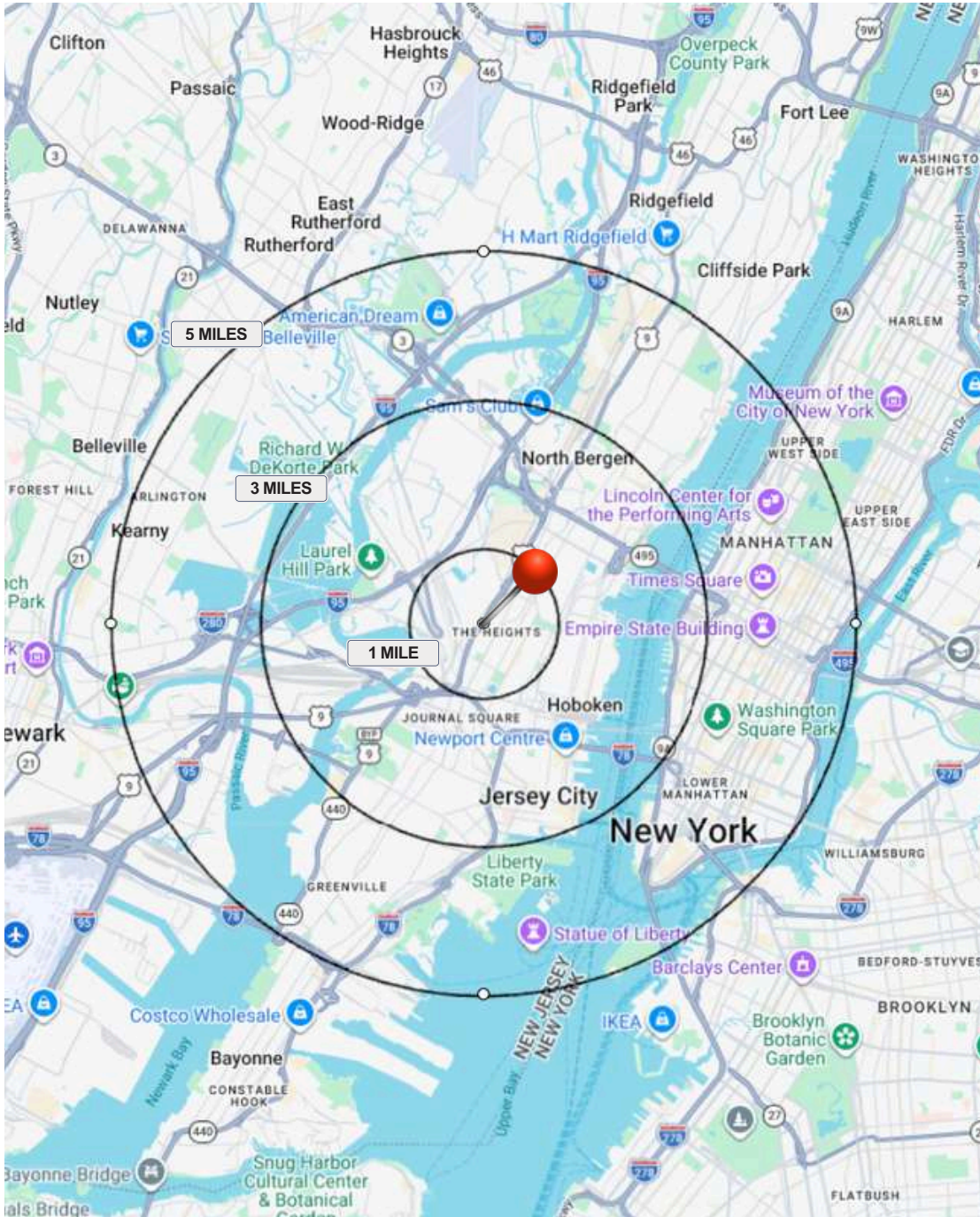
# AERIAL:



# AERIAL:



# DEMOGRAPHICS:



## 1 MILE RADIUS

### POPULATION

12,333

### HOUSEHOLDS

3,654

### MEDIAN AGE

33.4

### COLLEGE GRADUATES

(Bachelor's +)

1,474 - 18.7%

### TOTAL BUSINESSES

482

### TOTAL EMPLOYEES

3,260

### MEDIAN AGE

33.4

### DAYTIME POPULATION

(w/ 16 yr +)

6,880

## 3 MILE RADIUS

### POPULATION

54,842

### HOUSEHOLDS

17,422

### MEDIAN AGE

35.3

### COLLEGE GRADUATES

(Bachelor's +)

7,283 - 20.2%

### TOTAL BUSINESSES

1,408

### TOTAL EMPLOYEES

13,513

### MEDIAN AGE

33.4

### DAYTIME POPULATION

(w/ 16 yr +)

30,647

## 5 MILE RADIUS

### POPULATION

90,649

### HOUSEHOLDS

30,173

### MEDIAN AGE

37.0

### COLLEGE GRADUATES

(Bachelor's +)

14,562 - 24.0%

### TOTAL BUSINESSES

2,661

### TOTAL EMPLOYEES

31,697

### MEDIAN AGE

33.4

### DAYTIME POPULATION

(w/ 16 yr +)

60,637

# CONTACT AGENT

**BOBBY ANTONICELLO JR., CCIM**

LICENSED REAL ESTATE BROKER

bobby@gridcre.com

(551) 795-2836

THE MEDICINE WOMAN



**GRID REAL ESTATE LLC DISCLAIMER.** THE INFORMATION CONTAINED HEREIN HAS BEEN OBTAINED FROM SOURCES WE BELIEVE TO BE RELIABLE. HOWEVER, WE HAVE NOT INDEPENDENTLY VERIFIED IT AND MAKE NO GUARANTEES, WARRANTIES, OR REPRESENTATIONS AS TO ITS ACCURACY OR COMPLETENESS. ANY PROJECTIONS, RENDERINGS, OPINIONS, ASSUMPTIONS, OR ESTIMATES ARE PROVIDED FOR ILLUSTRATIVE PURPOSES ONLY AND DO NOT REFLECT OR GUARANTEE THE CURRENT OR FUTURE PERFORMANCE OF THE PROPERTY. PROSPECTIVE PURCHASERS, LESSEES, AND THEIR ADVISORS ARE URGED TO CONDUCT THEIR OWN THOROUGH, INDEPENDENT INVESTIGATION OF THE PROPERTY TO DETERMINE ITS SUITABILITY FOR THEIR NEEDS.