
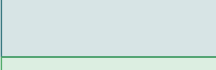
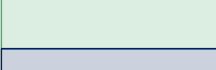
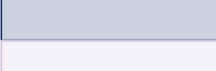
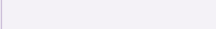


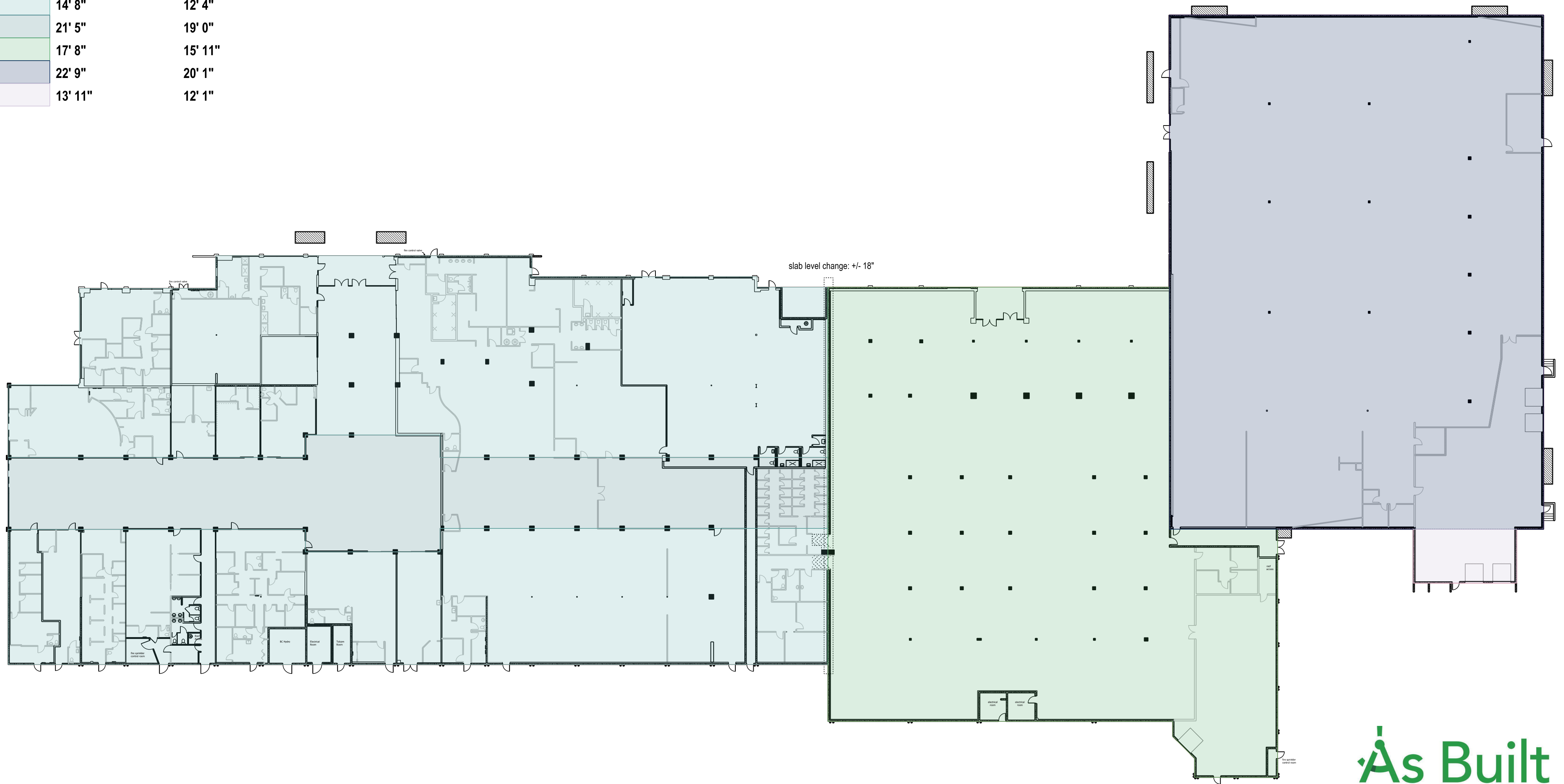
Westwood Mall
3000 Lougheed Hwy
Coquitlam, BC

01: Floor Plan

GROSS AREA: 135,826 SQ FT

MEASUREMENT STANDARD:
ANSI/BOMA Z65.5-2010

AREA	SLAB TO DECK	SLAB TO TRUSS
	14' 8"	12' 4"
	21' 5"	19' 0"
	17' 8"	15' 11"
	22' 9"	20' 1"
	13' 11"	12' 1"



As Built
MEASURING SERVICES

asbuilt.ca
+1-403-830-5591

PREPARED FOR:

Choice
Properties REIT

SCALE (ARCH C):
1/32" = 1' 0"



SURVEYED BY: J. Sasges
SURVEY DATE: Nov 30-Dec 2, 2020