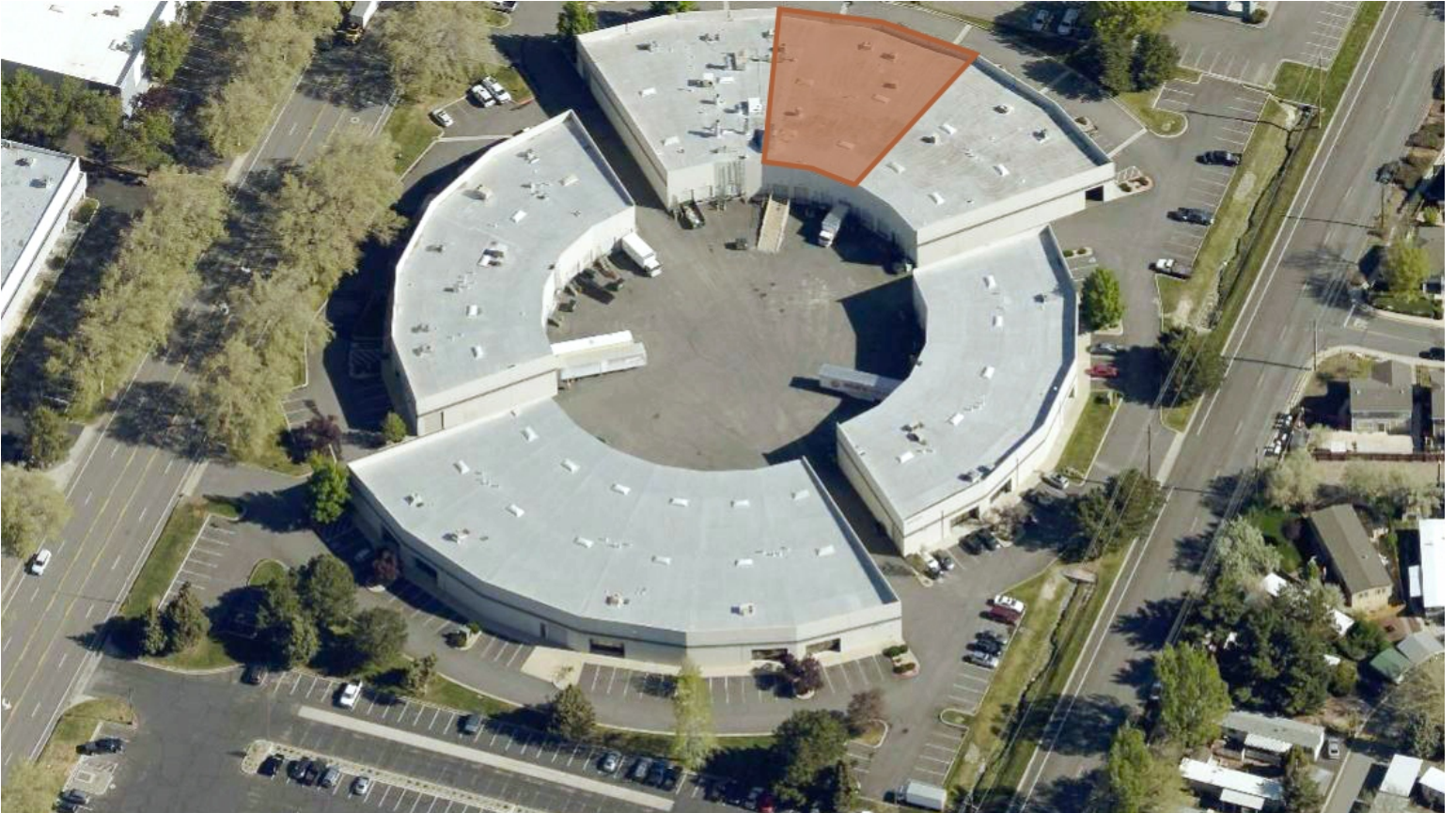


RENO AIRCENTER BUILDING 7

AIRPORT SUBMARKET

4818 Longley Lane,
Reno, NV 89502



FOR LEASE

±11,332 SF



LEASED BY

Colliers

RENO AIRCENTER BUILDING 7

AIRPORT SUBMARKET

4818 Longley Lane
Reno, NV 89502

BUILDING SPECIFICATIONS

Lease Rate	Negotiable
Est. OPEX	\$0.20/SF
Available Space	11,332 SF
Office Space	TBD SF
Dock-High Doors/Drive-In Doors	2 Dock/1 Drive-in
Clear Height	18'
Sprinklers	.33/3,000
Power	400 AMP, 480 Volt, 3-Phase
Built	1986

Located in Reno's Airport submarket, 4818 Longley Lane is a professionally managed facility built in 1986. Includes 18' clear height, two dock-high doors, one drive-in door, and a .33/3,000 sprinkler rating.

FOR LEASE

±11,332 SF

Steve Kucera, SIOR, CCIM
steve.kucera@colliers.com
(775) 823-4665
NV Lic. # S.0172550

Makenna Backstrom
makenna.backstrom@colliers.com
(775) 823-6622
NV Lic. # S.0194236

