

Available For Lease

Office/Warehouse/ Flex Space



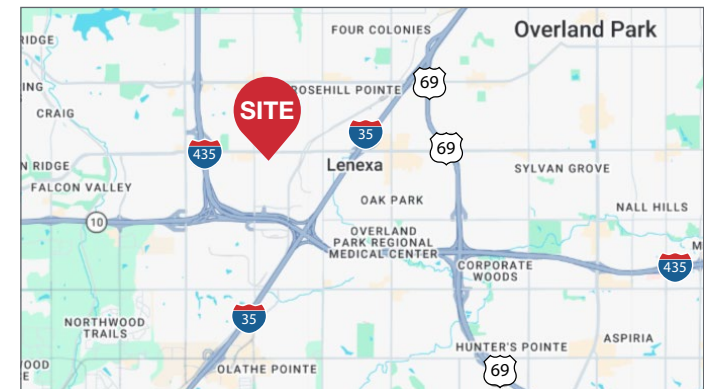
Park Place 95 Business Park

14631-14651 W 95th St, Lenexa, KS

Property Features

Park Place 95 features high quality office, flex and industrial space with an unbeatable Johnson County location. It offers competitive lease rates and a high-image business park environment. The property has quick highway access to I-435, I-35, K-10 and 69-Highway into south Overland Park. BP-1 Zoning allows for a wide variety of uses. High-visibility signage available on 95th Street and Alden.

- 14649 W 95th Street:
 - 3,083 SF
 - 1 dock-high loading door
 - Lease Rate: \$9.75 PSF Net
 - Est. 2026 CAM: \$2.13 PSF, Est. 2026 Taxes: \$2.63 PSF & Est. 2026 Insurance: \$0.35 PSF



For more information:

Nathan Anderson, SIOR, CCIM
+1 913 890 2001 • nathan@nai-heartland.com

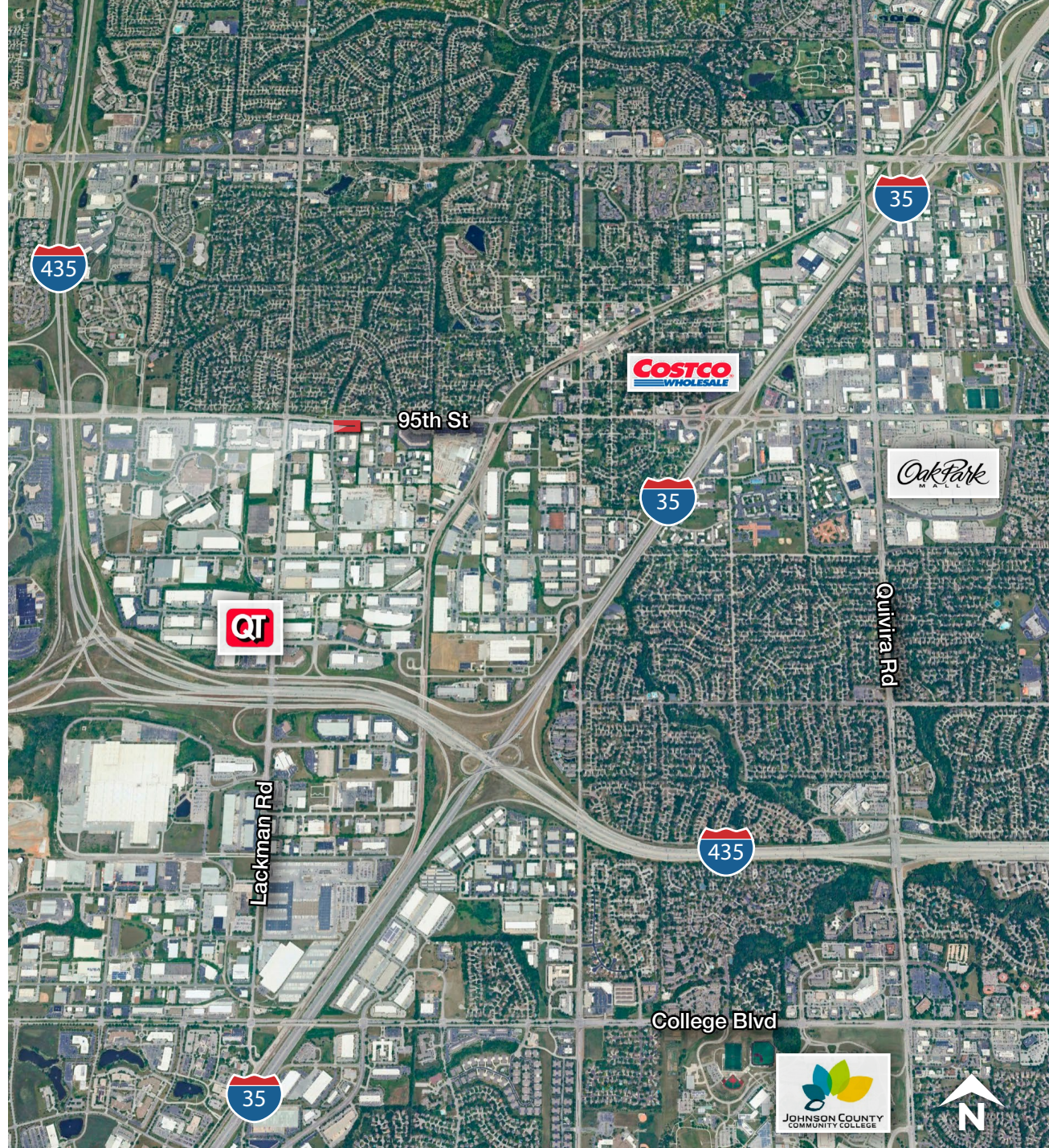
NO WARRANTY OR REPRESENTATION, EXPRESS OR IMPLIED, IS MADE AS TO THE ACCURACY OF THE INFORMATION CONTAINED HEREIN, AND THE SAME IS SUBMITTED SUBJECT TO ERRORS, OMISSIONS, CHANGE OF PRICE, RENTAL OR OTHER CONDITIONS, PRIOR SALE, LEASE OR FINANCING, OR WITHDRAWAL WITHOUT NOTICE, AND OF ANY SPECIAL LISTING CONDITIONS IMPOSED BY OUR PRINCIPALS NO WARRANTIES OR REPRESENTATIONS ARE MADE AS TO THE CONDITION OF THE PROPERTY OR ANY HAZARDS CONTAINED THEREIN ARE ANY TO BE IMPLIED.

4400 College Boulevard Suite 170
Overland Park, Kansas 66211
913 362 1000

nai-heartland.com

Available For Lease

Office/Warehouse/ Flex Space



Location Advantages

- Less than 1.5 miles to I-435 & I-35 access
- 3 miles to K-10, direct access to Lawrence, KS
- 6 miles to 69 Hwy into south Overland Park

NAIHeartland

4400 College Boulevard Suite 170
Overland Park, Kansas 66211
913 362 1000
nai-heartland.com

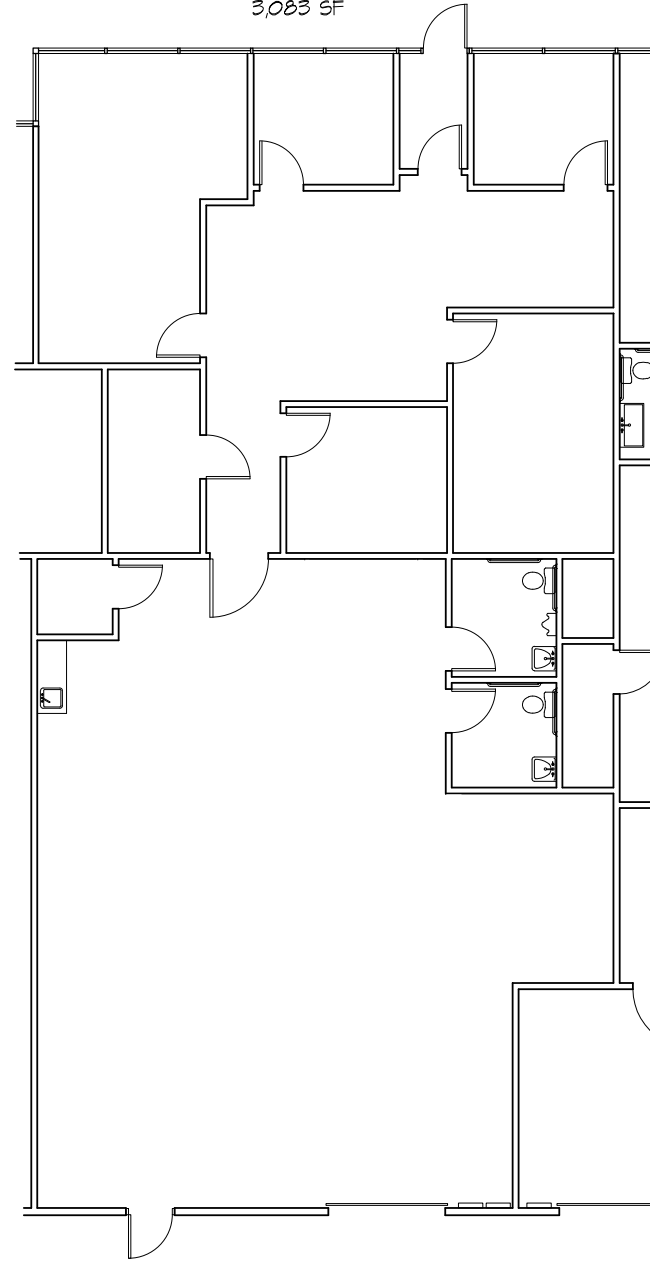
Nathan Anderson, SIOR, CCIM
+1 913 890 2001
nathan@nai-heartland.com

Available For Lease

Office/Warehouse/ Flex Space



SUITE 14649
3,083 SF



4400 College Boulevard Suite 170
Overland Park, Kansas 66211
913 362 1000
nai-heartland.com

Nathan Anderson, SIOR, CCIM
+1 913 890 2001
nathan@nai-heartland.com