

±155.54 INDUSTRIAL ACRES

NEC I-10 & SUNSHINE BOULEVARD | ELOY, ARIZONA



CONTACT FOR MORE INFORMATION

Kirk P. McCarville, CCIM
kmccarville@landadvisors.com
520.251.0348

Trey Davis
tdavis@landadvisors.com
602.363.3901

 Land Advisors[®]
ORGANIZATION

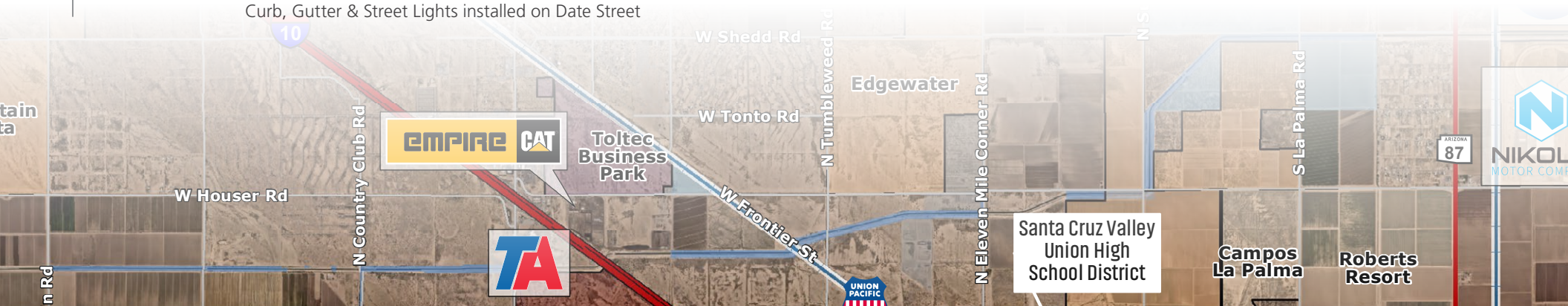
520.251.0348 | LandAdvisors.com

EXECUTIVE SUMMARY



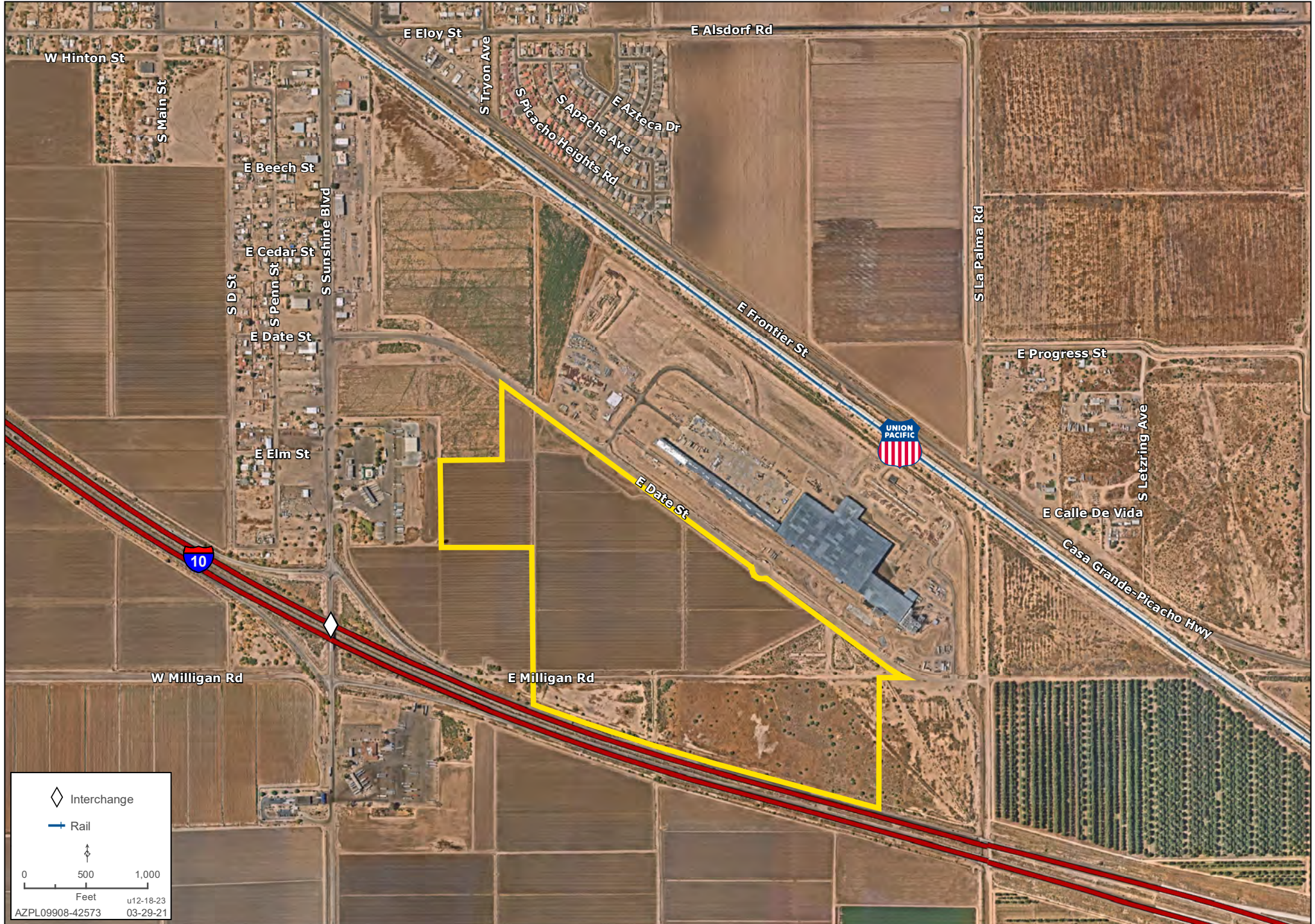
LOCATION	The Property is located at the northeast corner of I-10 & Sunshine Boulevard in Eloy, Arizona.
SIZE	±155.54 Acres
PRICE	Submit
PARCELS	411-10-0160, 411-10-017B (por), 411-10-017F (por), 411-10-0180, 411-10-0190, 411-10-020D, 411-10-021D, 411-17-006B (por), 411-17-0070
ZONING	I-1 (Light Industrial), City of Eloy
UTILITIES	Power - Electrical District #4 Water - City of Eloy Sewer - City of Eloy Gas - Southwest Gas Irrigation - Central Arizona Irrigation District Curb, Gutter & Street Lights installed on Date Street

LOCALITY	Interstate 8 : ±10 Miles 15 Minutes Casa Grande: ±21.7 Miles 30 Minutes Tucson: ±50 Miles 54 Minutes Phoenix: ±64 Miles 1 Hour
WATER & SOILS	Click here to view Groundwater Rights Click here to view Soil Report
COMMENTS	Located in the Arizona Commerce Authority Opportunity Zone. Click here for more information.
DUE DILIGENCE	Click here to view the Due Diligence Portal.



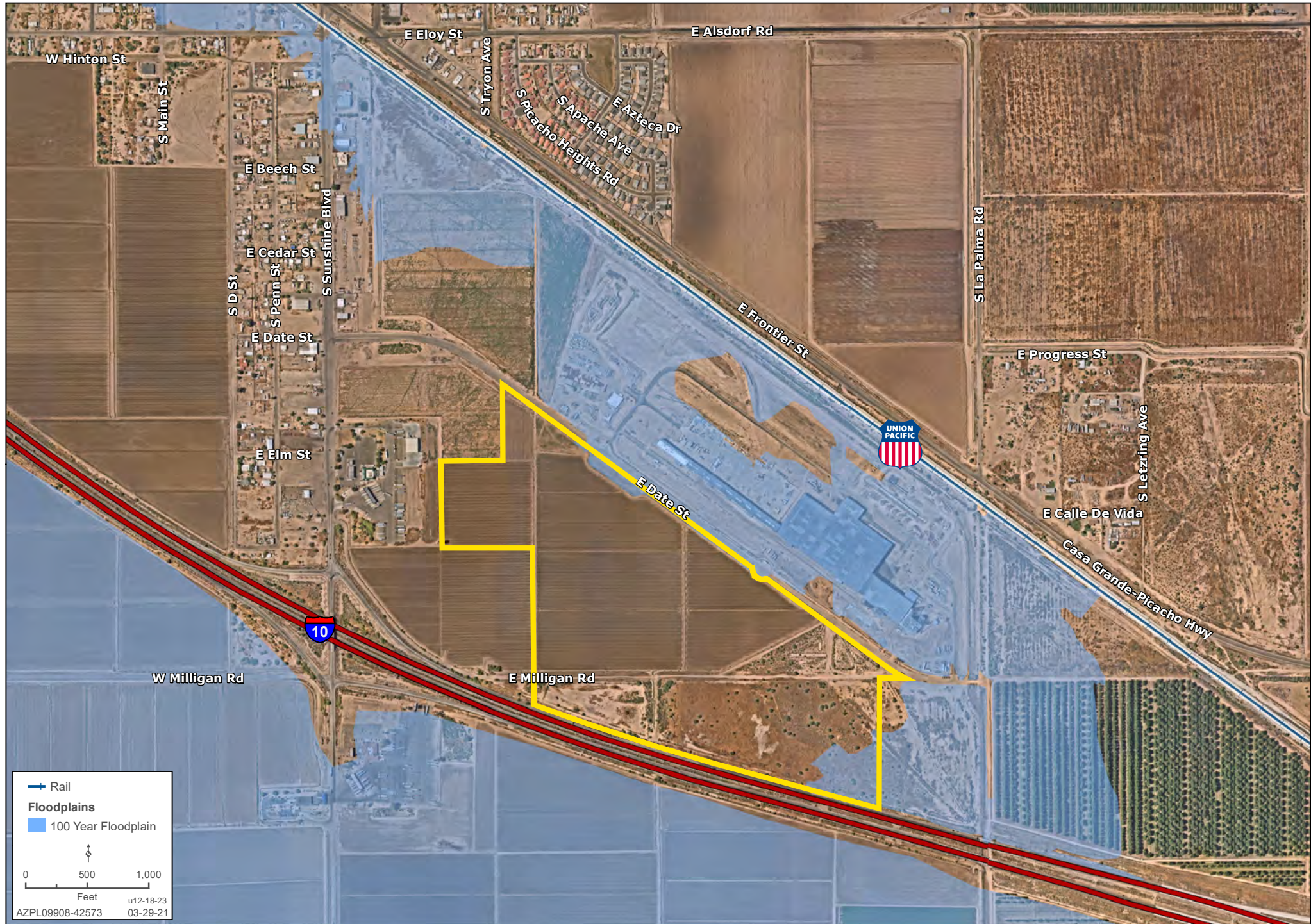
DETAIL MAP

Kirk P. McCarville, CCIM | Trey Davis | 520.251.0348 | www.landadvisors.com



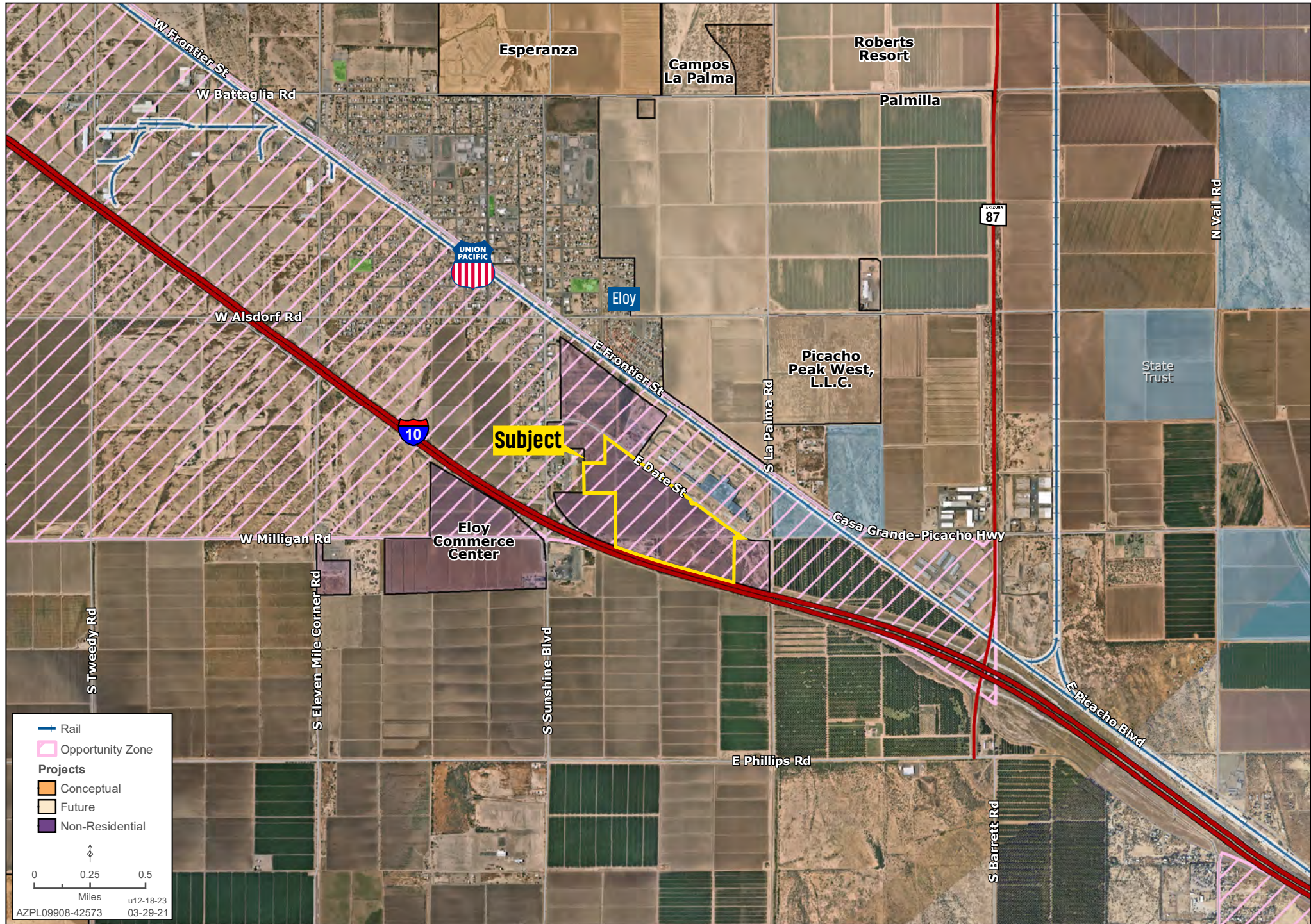
FLOODPLAIN MAP

Kirk P. McCarville, CCIM | Trey Davis | 520.251.0348 | www.landadvisors.com



OPPORTUNITY ZONE MAP

Kirk P. McCarville, CCIM | Trey Davis | 520.251.0348 | www.landadvisors.com



PINAL COUNTY HIGHLIGHTS | [CLICK THE LINKS BELOW FOR MORE INFORMATION](#)



[New Jobs](#)

[Coming to
Pinal County](#)



[Labor](#)

[Report](#)



[Casa Grande](#)

[Incentive
Package](#)



[Pinal County](#)

[Incentive
Package](#)



[1Q26](#)

[Market
Insights](#)



[About](#)

[Land Advisors
Organization](#)

The information in this email and any attachments regarding any property has been obtained from sources believed reliable, but we have not verified it and we make no guarantee, warranty, or representation as to its accuracy or completeness, and we do not undertake to update or correct any of the information presented. Any projections, opinions, assumptions, or estimates ("forward-looking statements") used are, for example, only and do not represent the current or future performance of the property and actual results may differ materially from such forward-looking statement due to, without limitation, changes in: (i) the market, (ii) governmental legal, regulatory or permitted use changes, and (iii) other factors. You and your advisors should conduct a careful, independent investigation of the property to determine to your satisfaction the property's suitability for your needs. Any reliance on this information is at your own risk and is subject to change, prior sale or complete withdrawal. AZPL09908 - 05.28.2026.



[LandAdvisors.com](https://www.LandAdvisors.com)