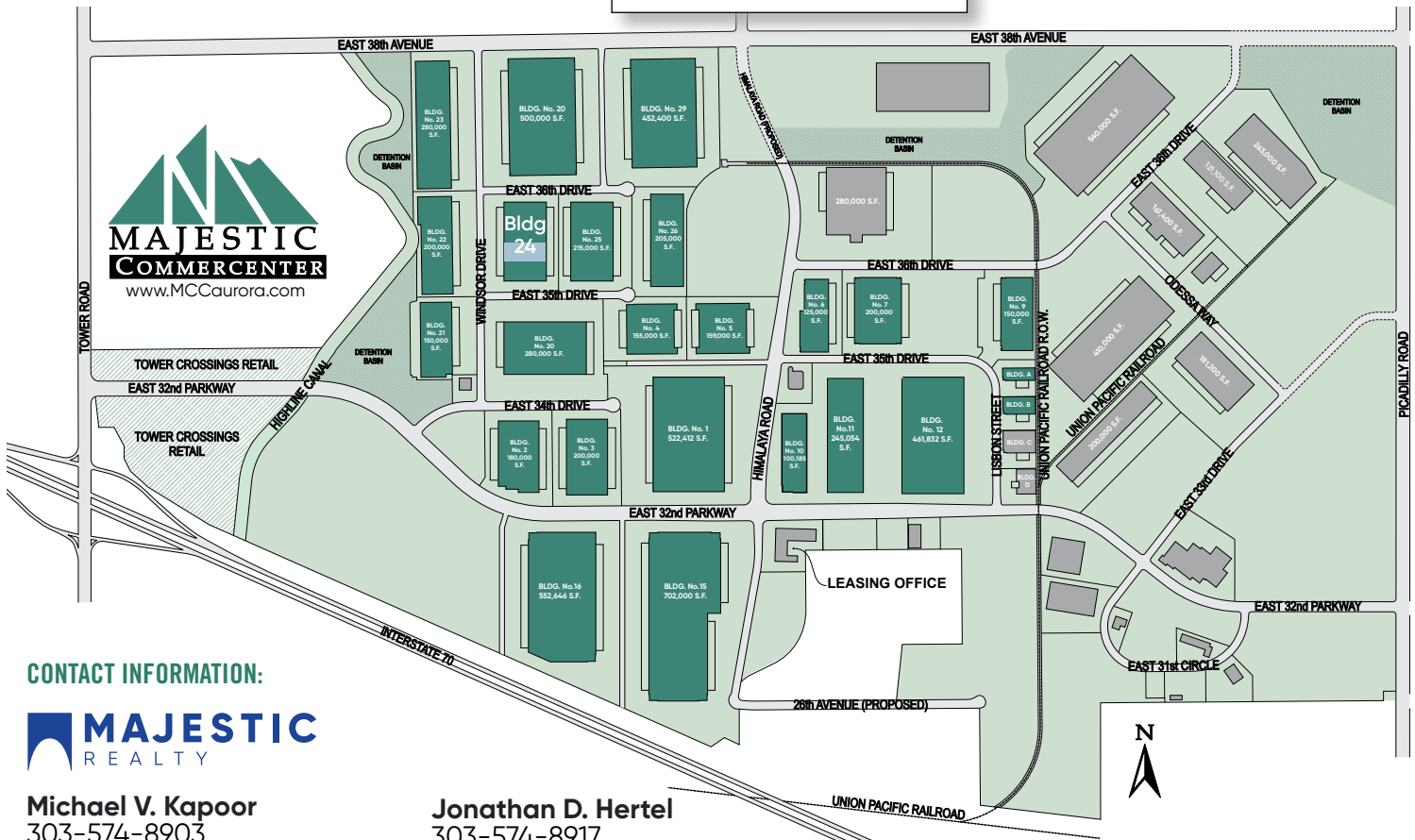
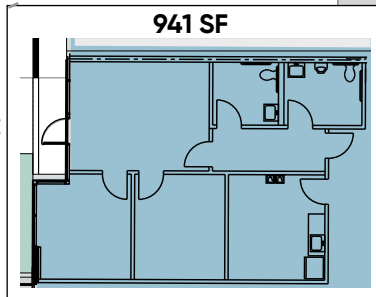
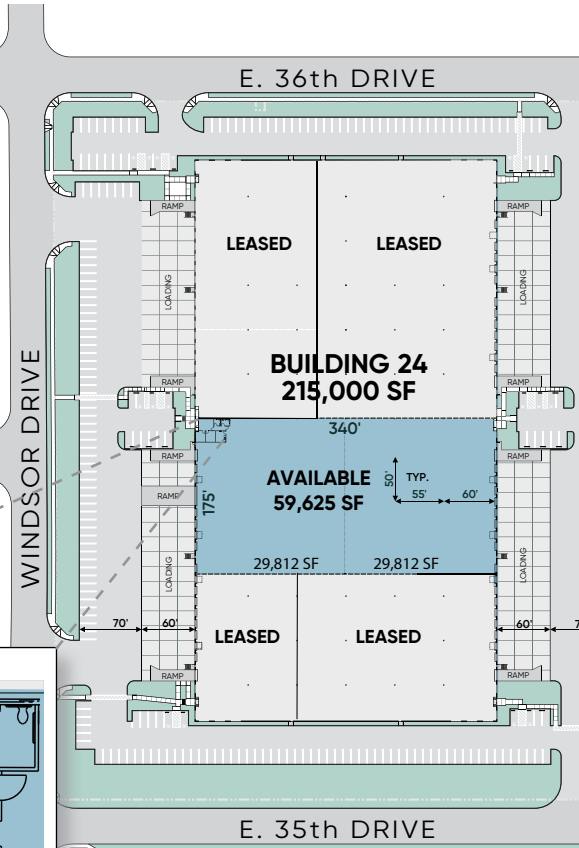




Majestic Commercenter Features

- 1,600 Acre Master Planned Business Park
- 10 Million Square Feet Developed
- 25,000 to 1,500,000 Square Feet Available
- Spec Product and Build-to-Suit
- Immediate Access to I-70 at Tower Road
- I-70 and E-470 Frontage
- 5 miles South of Denver International Airport
- Federal Opportunity Zone
- Adams County Enterprise Zone
- Foreign Trade Zone 123
- Xcel Energy Certified Site



CONTACT INFORMATION:



Michael V. Kapoor
 303-574-8903
 mkapoor@majesticrealty.com

Jonathan D. Hertel
 303-574-8917
 jhertel@majesticrealty.com

This statement is based upon information which we believe to be correct and is obtained from sources we regard as reliable but we assume no liability for errors or omissions therein.