

For Lease | Industrial Warehouse

CBRE

# 3220 S Thomas Road

Oklahoma City, Oklahoma 73179

10,500± SF



**Jason Hammock, SIOR, CCIM**

First Vice President

+1 405 315 0725

[jason.hammock@cbre.com](mailto:jason.hammock@cbre.com)

**Caitlin Mazaheri, SIOR, CCIM**

Vice President

+1 405 413 2315

[caitlin.mazaheri@cbre.com](mailto:caitlin.mazaheri@cbre.com)



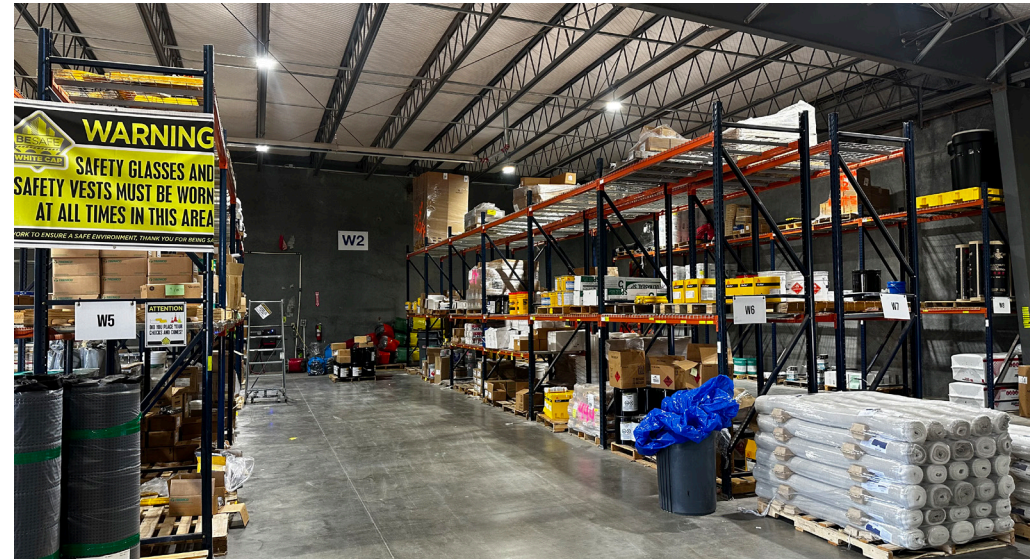
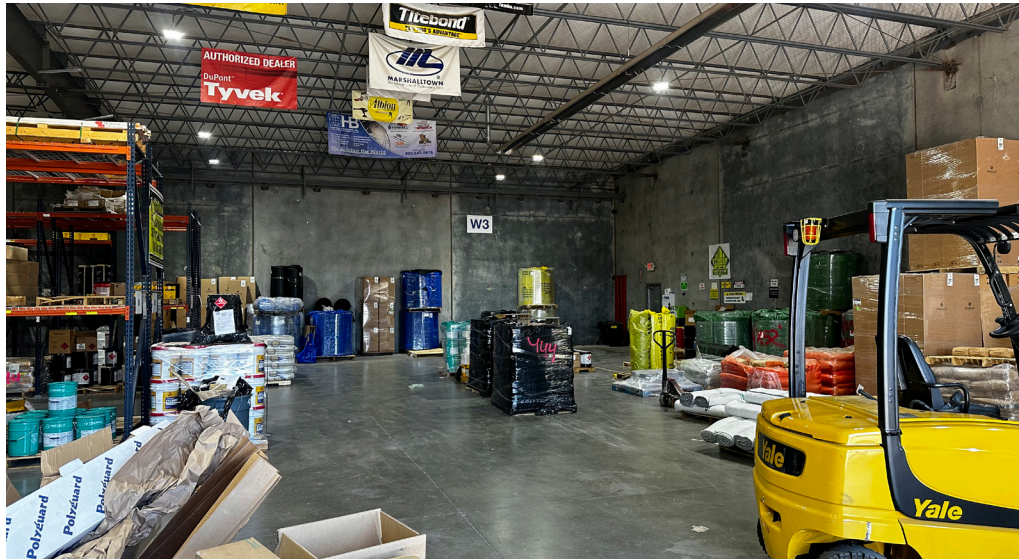
## Property Details

- + Building Size: 10,500± SF
- + Office Space: 1,750± SF
- + Total Land Size: 0.46± AC
- + Built in 2009
- + I-3 Zoning
- + Located in industrial park
- + (15) Surface Parking Spaces
- + Clear Height: 20'
- + (1) Dock
- + (1) Drive-in
- + Easy access to I-240 & I-44
- + **Lease Rate: \$8.50 PSF**



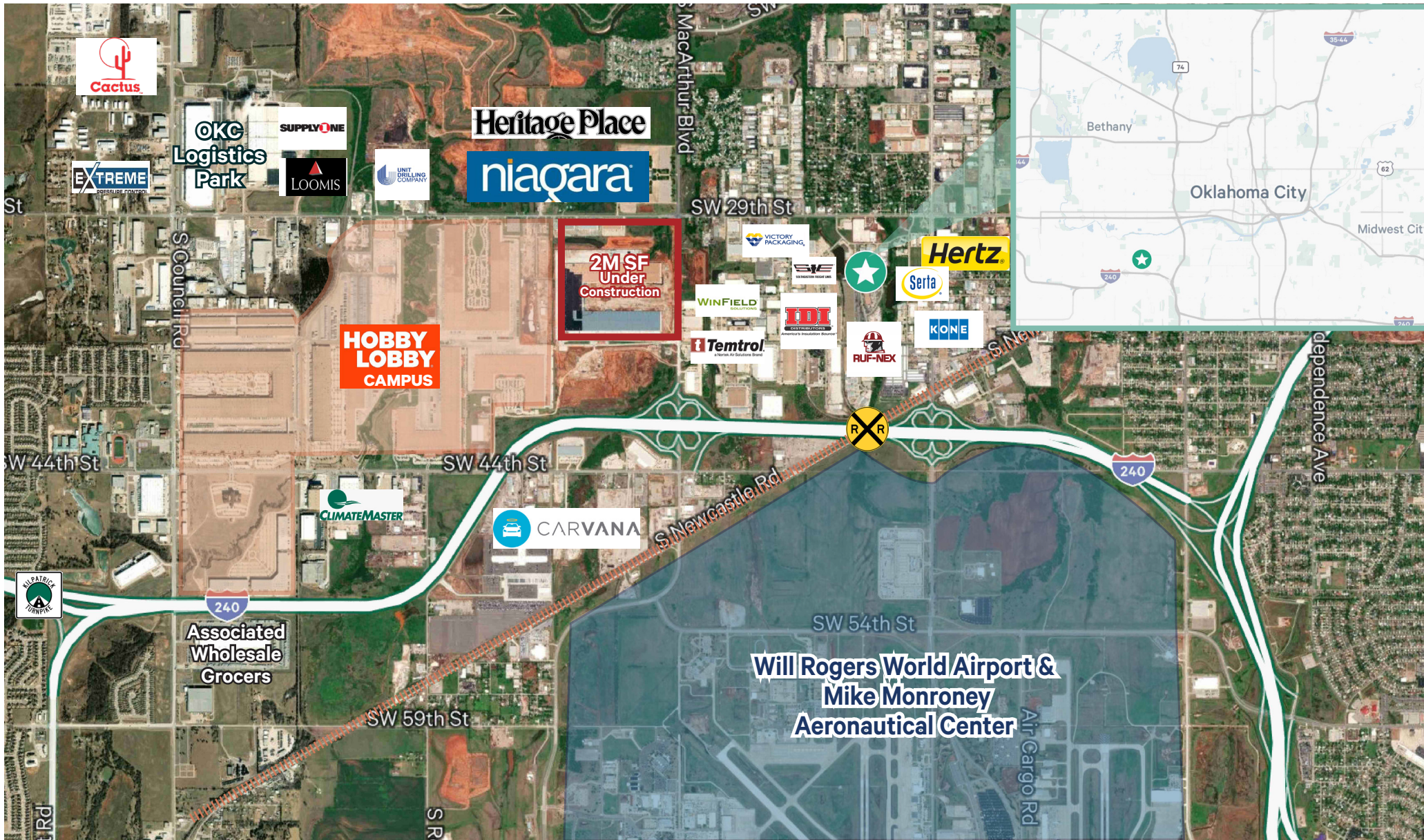
© 2024 CBRE, Inc. All rights reserved. This information has been obtained from sources believed reliable, but has not been verified for accuracy or completeness. You should conduct a careful, independent investigation of the property and verify all information. Any reliance on this information is solely at your own risk. CBRE and the CBRE logo are service marks of CBRE, Inc. All other marks displayed on this document are the property of their respective owners, and the use of such logos does not imply any affiliation with or endorsement of CBRE. Photos herein are the property of their respective owners. Use of these images without the express written consent of the owner is prohibited.

# For Lease | Industrial Warehouse



© 2024 CBRE, Inc. All rights reserved. This information has been obtained from sources believed reliable, but has not been verified for accuracy or completeness. You should conduct a careful, independent investigation of the property and verify all information. Any reliance on this information is solely at your own risk. CBRE and the CBRE logo are service marks of CBRE, Inc. All other marks displayed on this document are the property of their respective owners, and the use of such logos does not imply any affiliation with or endorsement of CBRE. Photos herein are the property of their respective owners. Use of these images without the express written consent of the owner is prohibited.

# For Lease | Industrial Warehouse



**Jason Hammock, SIOR, CCIM**  
First Vice President  
+1 405 315 0725  
jason.hammock@cbre.com

**Caitlin Mazaheri, SIOR, CCIM**  
Vice President  
+1 405 413 2315  
caitlin.mazaheri@cbre.com