



**CHRISMAN  
COMMERCIAL**

**OFFICE/R&D SPACE FOR LEASE**  
First & Second Floor Units Available  
4909 Nautilus Court North, Boulder, CO 80301



## HIGHLIGHTS

Available Spaces:

Unit 1: **4,996 SF**

Units 8-10: **4,642 – 14,816 SF**

Units 11 & 12: **13,939 SF**

**(Sublease through 6/30/26)**

Unit 14: **4,965 SF**

Lease Rate: **\$15-\$20/SF**

Expenses: **\$7.80/SF** plus utilities

Zoning: **IG**

Parking: **1 per 297 SF**

Dock Door: **1 Dock High**

Energy Star Certified


Easy Access to Hwy 119 & Hwy 52

Near bus stop and restaurants

100% HVAC and Sprinklered

High-quality Gunbarrel building adjacent to Avery Brewery and Twin Lakes open space. The common areas include showers and lockers in the women's and men's restrooms. Outside there are picnic tables, bike lockers and abundant parking. The building is fully air-conditioned and has a fire sprinkler system throughout.


## CONTACT US

 **(303) 449 7475**

 **valerie@elevatedboulder.com**

**susan@elevatedboulder.com**

## CHRISMAN COMMERCIAL

 **(303) 938 8200**

 **steve@chrismanc.com**

**michele@chrismanc.com**

**OFFICE/R&D SPACE FOR LEASE**  
**First & Second Floor Units Available**  
4909 Nautilus Court North, Boulder, CO 80301

## FLOOR PLANS

**Unit 1** (4,996 SF)

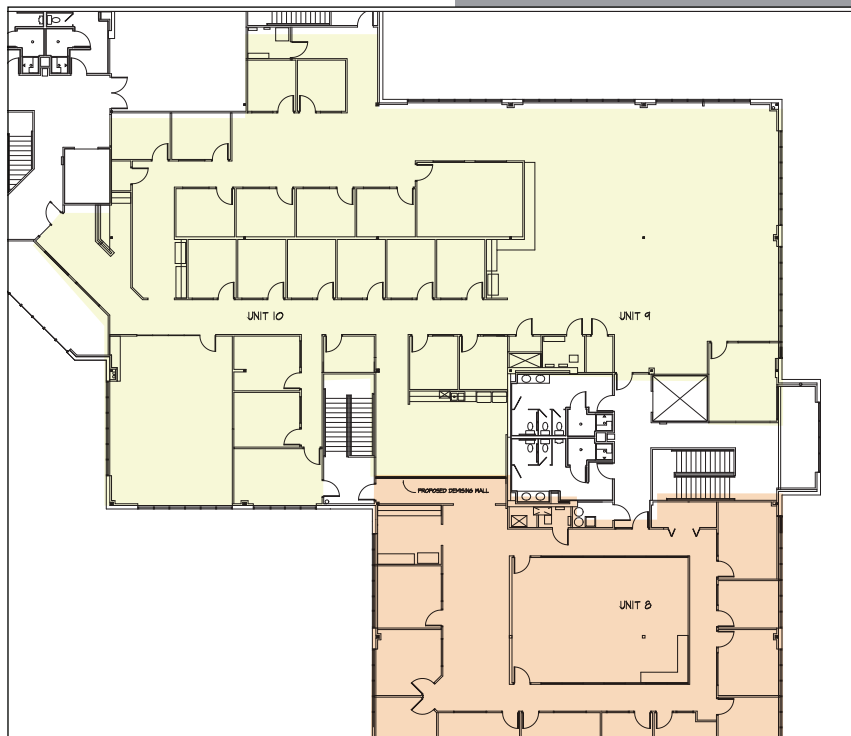


## MULTIPLE UNITS AVAILABLE

**Unit 1:** Open and light office space with perimeter offices, open area that can be used for bullpen, engineering or assembly, conference room, copy area, server room and storage areas.

**Units 8 – 10:** Unit 8 has 11 perimeter offices with mountain and lake views, a large conference room, small bullpen area, copy room, and storage closet with the ability to add a kitchen area. Units 9/10 consist of 18 interior offices & 1 perimeter office, large, medium and small conference rooms, a sizeable bullpen, large breakroom with kitchen, welcoming reception area, copy room, separately cooled computer room, and storage closets. Units are currently combined for a total of 14,816 SF.

**Units 8 – 10** (14,816)



(303) 449 7475



PO Box 510, Niwot, CO 80544

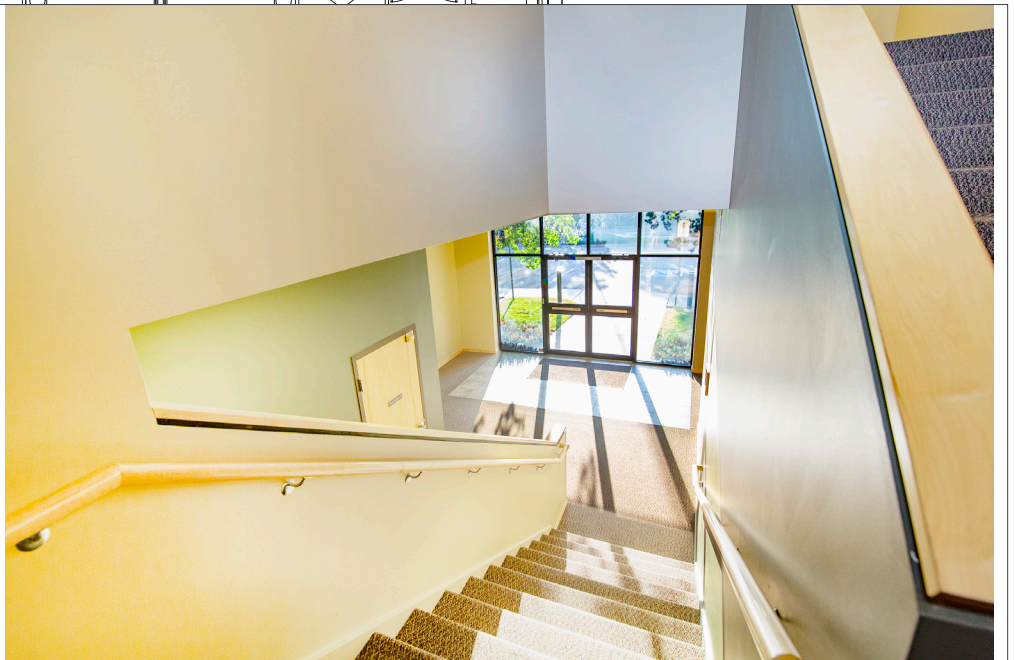


**CHRISMAN  
COMMERCIAL**

**OFFICE/R&D SPACE FOR LEASE**  
First & Second Floor Units Available  
4909 Nautilus Court North, Boulder, CO 80301

**Unit 14:** This 4,965 SF space sits on the second floor of the northwest side of the building, boasting plenty of natural light and beautiful mountain views. The space consists of many perimeter offices, reception area, storage/IT rooms, and a private kitchen.

**Unit 14** (4,965 SF)

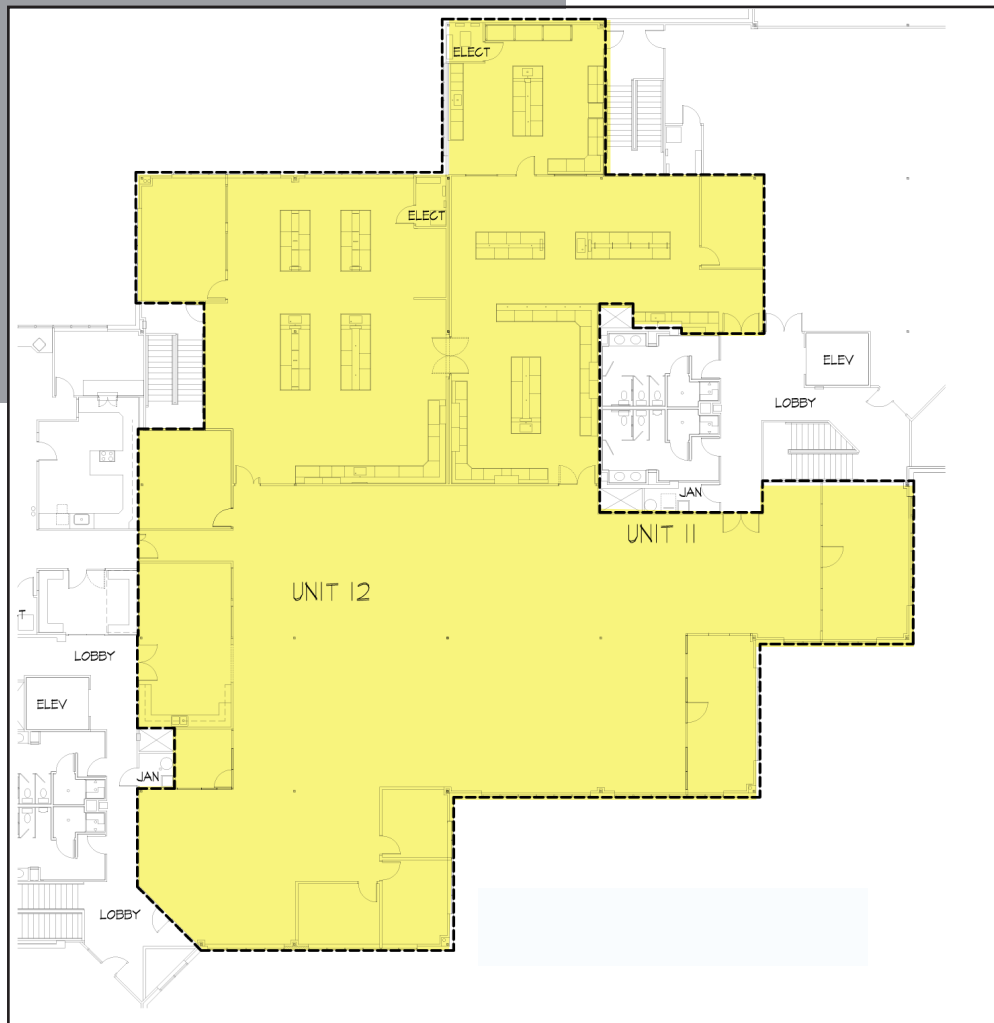


This information has been obtained from sources believed reliable and Chrisman Commercial Real Estate makes no warranty and accepts no responsibility or liability as to the accuracy or completeness of the information. Prospective tenants should conduct a careful, independent investigation of the property and verify all information.

**OFFICE/R&D SPACE FOR LEASE**  
**First & Second Floor Units Available**  
4909 Nautilus Court North, Boulder, CO 80301

**Units 11 & 12:** 13,939 SF space is a large 2nd floor office/lab space with great mountain views. The space has a ratio of approximately 55% open office and 45% lab space. The office area consists of a large kitchen with eating area, copy/mail room, two large conference rooms and the remainder is open with cubicles throughout. The cubicles, lab benches, and fume hoods can be included. Can be combined with units 8, 9 & 10 for a total of 28,755 SF. Sublease through 6/30/2026 at \$16/SF NNN. Longer term lease available.

**Units 11 & 12 (13,939 SF)**



(303) 449 7475



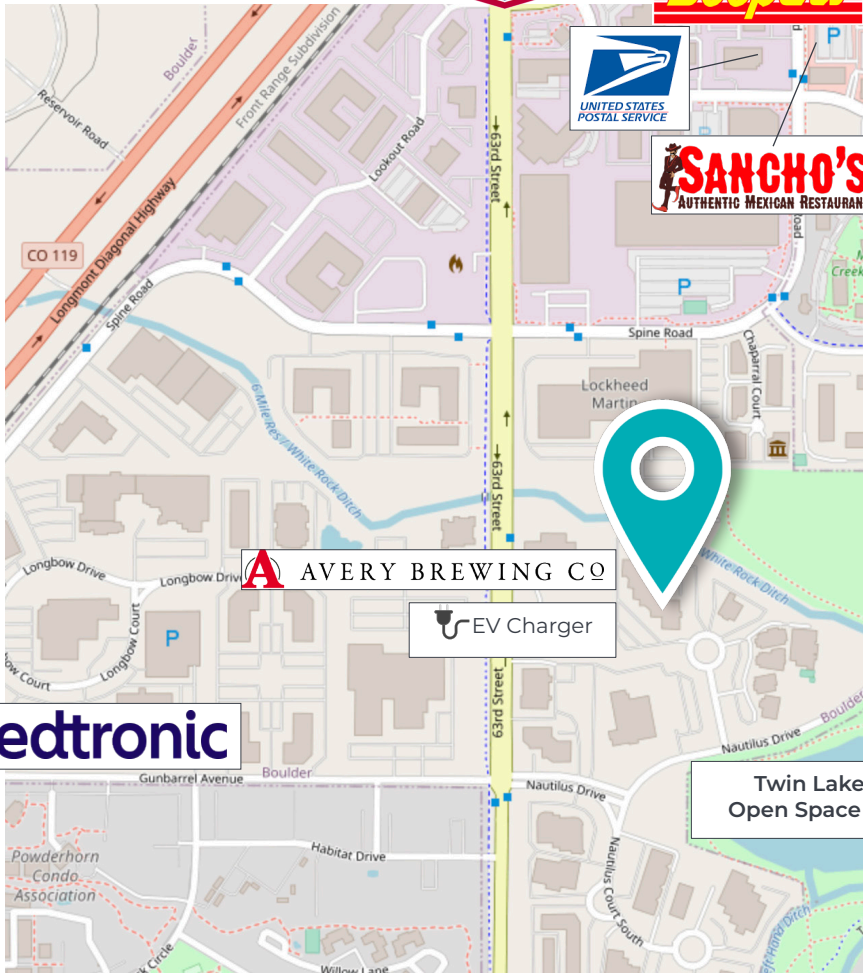
PO Box 510, Niwot, CO 80544



**CHRISMAN  
COMMERCIAL**

**OFFICE/R&D SPACE FOR LEASE**  
First & Second Floor Units Available  
4909 Nautilus Court North, Boulder, CO 80301

**LOCATION**



**Medtronic**

**AVERY BREWING CO**

EV Charger

Twin Lakes  
Open Space



**CONTACT US**

(303) 449 7475

valerie@elevatedboulder.com

susan@elevatedboulder.com

**CHRISMAN COMMERCIAL**

(303) 938 8200

steve@chrismanc.com

michele@chrismanc.com

This information has been obtained from sources believed reliable but has not been verified for accuracy or completeness. Elevated Real Estate, Inc. makes no guarantee, representation or warranty and accepts no responsibility or liability as to the accuracy, completeness, or reliability of the information contained herein. Any reliance on this information is solely at your own risk. You should conduct a careful, independent investigation of the property and verify all information.