

RARE MT. PLEASANT FLEX WAREHOUSE FOR LEASE!

547 LONG POINT ROAD
SUITE 104
MT. PLEASANT, SC 29464

For Lease

±4,380 RSF
Class A Flex Space/
Showroom

Lease Rate:
\$20/SF, NNN
(\$4.00)



About the Property

NAI Charleston is pleased to present for lease Suite 104 at 547 Long Point Rd., Mt. Pleasant, SC. This Class A Flex building is ideally located just off of I-526, providing easy access for both tenants and customers. Suite 104 offers an ideal flex layout with front showroom/office space and a warehouse in the rear. Features include an open showroom/office, restrooms, and a roll-up door. The property is tastefully constructed with brick facade and professionally maintained landscaping.

➤ Location, Location, Location

Outstanding accessibility, close to major population centers and thoroughfares. It is right down from the Port of Charleston's Wando Welch terminal and minutes from both Daniel Island and Mt. Pleasant communities.

➤ First Class Tenant Mix

Impressive mix of flex, recreation, and light office tenants including Two Blokes Brewery, Once Upon a Ballet, Elite Futsal, Steven Shell Living, and more.

➤ Versatile Flex Warehouse Space

The suite's open layout is ideal for a multitude of uses.

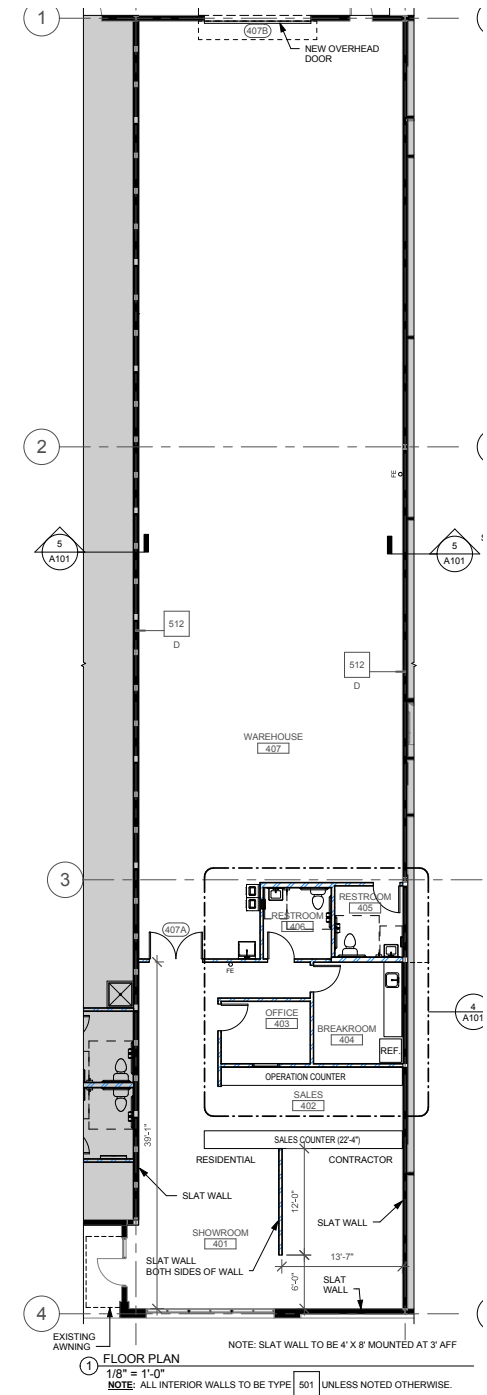
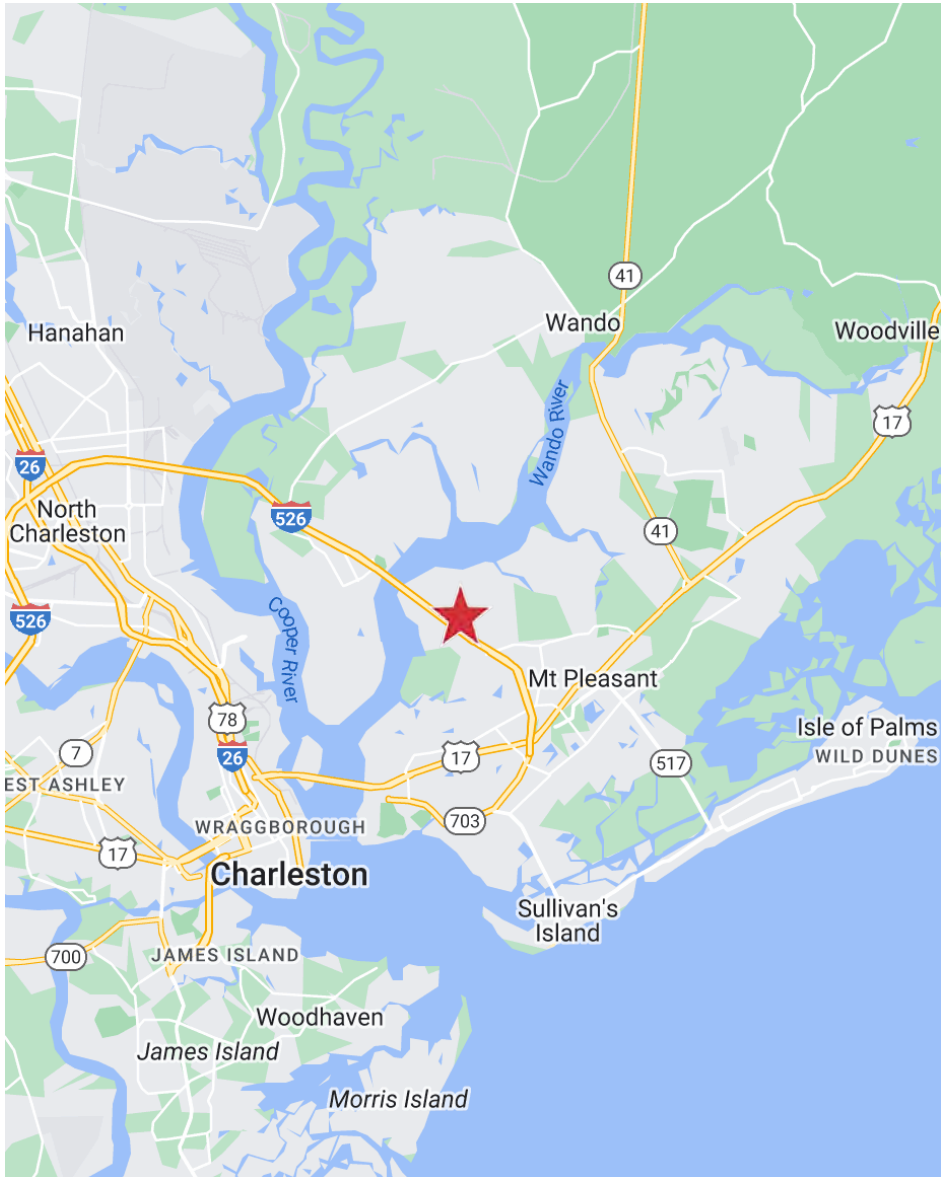


Offering Summary

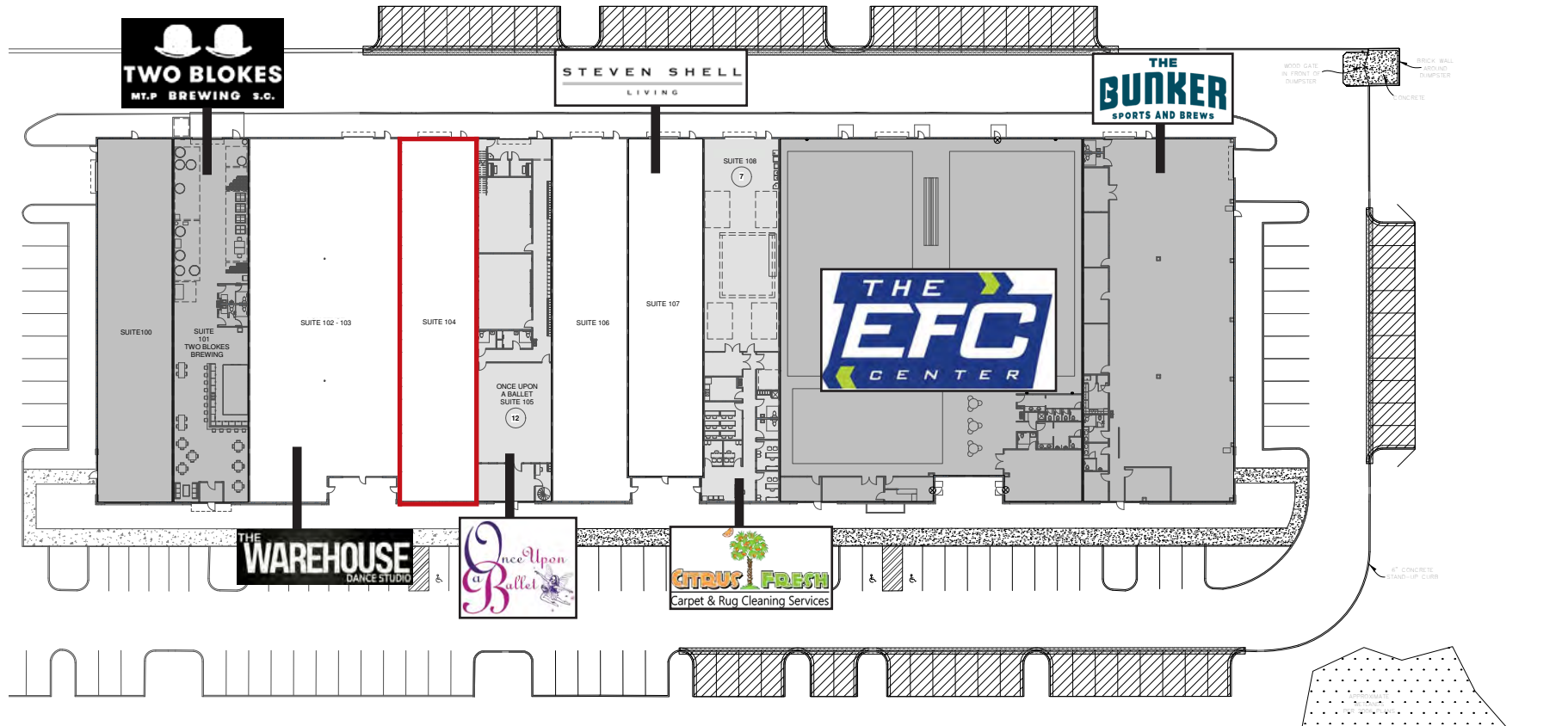
Building Size:	±66,000 SF
Available Space:	Suite 104 - ±4,380 SF
Parking:	Ample surface parking available
Availability:	May 11, 2026
Configuration:	Large Flex Warehouse - Approx. 3,000 SF - Roll-up Door Showroom/Office - Approx. 1,380 SF - Showroom floor and sales counter, managers office, breakroom, restrooms
Lease Rate:	\$20/SF/Yr, NNN (\$4.00)



Area Map + Floor Plan



LONG POINT TOWN CENTER



1 ARCHITECTURAL SITE PLAN
3/64" = 1'-0"

SITE PLAN LEGEND	
	EXISTING TENANTS
	NEWLY LEASED TENANTS
	FUTURE LEASED TENANTS

Additional Photos



Area Map

